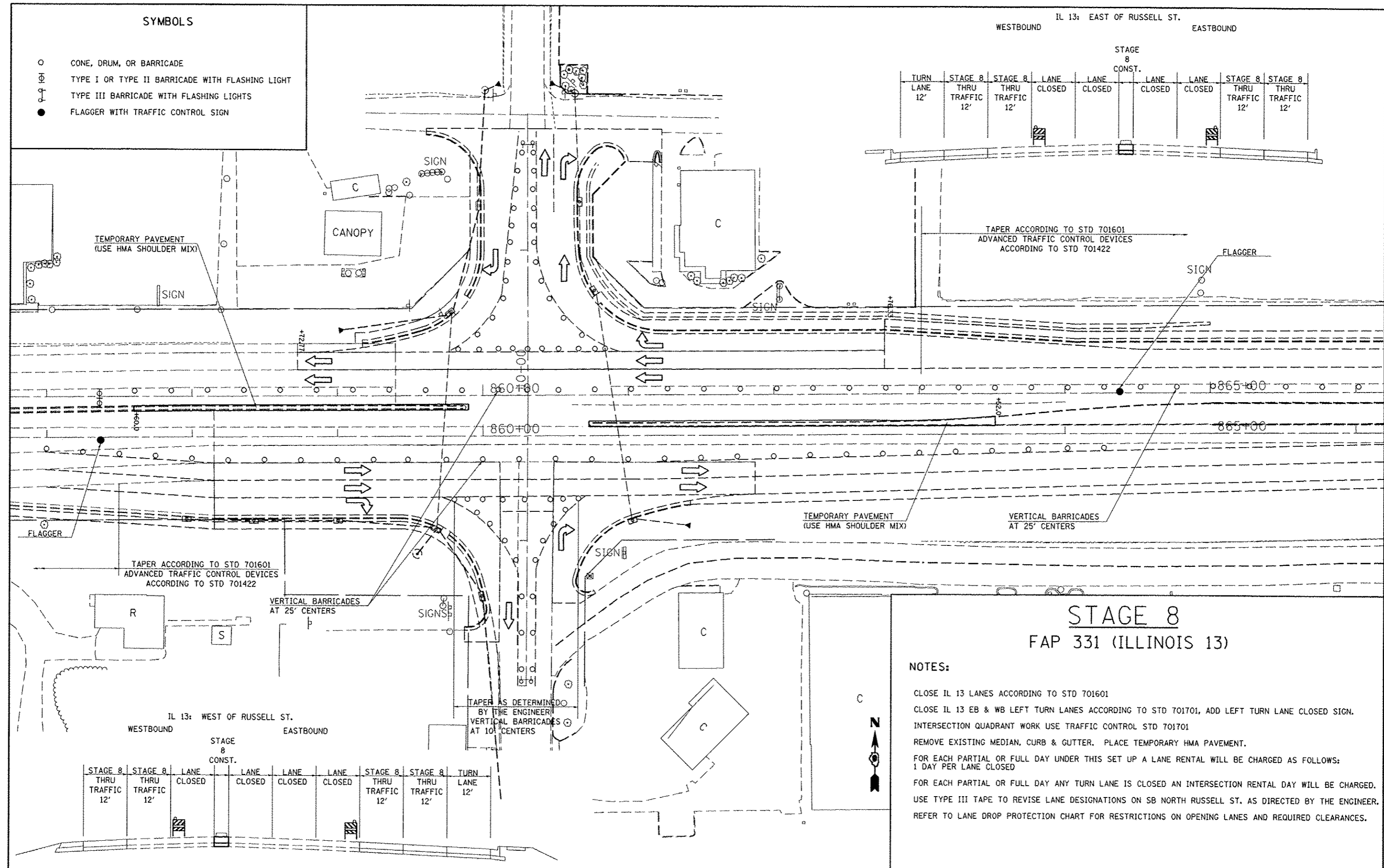


SYMBOLS

- CONE, DRUM, OR BARRICADE
- ⊕ TYPE I OR TYPE II BARRICADE WITH FLASHING LIGHT
- ⊕ TYPE III BARRICADE WITH FLASHING LIGHTS
- FLAGGER WITH TRAFFIC CONTROL SIGN

IL 13: EAST OF RUSSELL ST.
WESTBOUND EASTBOUND



TURN LANE 12'	STAGE 8 THRU TRAFFIC 12'	STAGE 8 THRU TRAFFIC 12'	LANE CLOSED	LANE CLOSED	LANE CLOSED	LANE CLOSED	STAGE 8 THRU TRAFFIC 12'	STAGE 8 THRU TRAFFIC 12'
---------------	--------------------------	--------------------------	-------------	-------------	-------------	-------------	--------------------------	--------------------------

TAPER ACCORDING TO STD 701601
ADVANCED TRAFFIC CONTROL DEVICES
ACCORDING TO STD 701422

TEMPORARY PAVEMENT
(USE HMA SHOULDER MIX)

CANOPY

TEMPORARY PAVEMENT
(USE HMA SHOULDER MIX)

VERTICAL BARRICADES
AT 25' CENTERS

TAPER ACCORDING TO STD 701601
ADVANCED TRAFFIC CONTROL DEVICES
ACCORDING TO STD 701422

VERTICAL BARRICADES
AT 25' CENTERS

TAPER AS DETERMINED
BY THE ENGINEER
VERTICAL BARRICADES
AT 10' CENTERS

STAGE 8
FAP 331 (ILLINOIS 13)

NOTES:

- CLOSE IL 13 LANES ACCORDING TO STD 701601
- CLOSE IL 13 EB & WB LEFT TURN LANES ACCORDING TO STD 701701, ADD LEFT TURN LANE CLOSED SIGN.
- INTERSECTION QUADRANT WORK USE TRAFFIC CONTROL STD 701701
- REMOVE EXISTING MEDIAN, CURB & GUTTER. PLACE TEMPORARY HMA PAVEMENT.
- FOR EACH PARTIAL OR FULL DAY UNDER THIS SET UP A LANE RENTAL WILL BE CHARGED AS FOLLOWS:
1 DAY PER LANE CLOSED
- FOR EACH PARTIAL OR FULL DAY ANY TURN LANE IS CLOSED AN INTERSECTION RENTAL DAY WILL BE CHARGED.
- USE TYPE III TAPE TO REVISE LANE DESIGNATIONS ON SB NORTH RUSSELL ST. AS DIRECTED BY THE ENGINEER.
- REFER TO LANE DROP PROTECTION CHART FOR RESTRICTIONS ON OPENING LANES AND REQUIRED CLEARANCES.

IL 13: WEST OF RUSSELL ST.
WESTBOUND EASTBOUND

STAGE 8 THRU TRAFFIC 12'	STAGE 8 THRU TRAFFIC 12'	LANE CLOSED	LANE CLOSED	LANE CLOSED	LANE CLOSED	STAGE 8 THRU TRAFFIC 12'	STAGE 8 THRU TRAFFIC 12'	TURN LANE 12'
--------------------------	--------------------------	-------------	-------------	-------------	-------------	--------------------------	--------------------------	---------------

FILE NAME =	USER NAME = #USER#	DESIGNED -	REVISED -
01\pwork\psdot\kellag\ad184451\78203\stg-dgn		DRAWN -	REVISED -
		CHECKED -	REVISED -
		DATE -	REVISED -

STATE OF ILLINOIS
DEPARTMENT OF TRANSPORTATION

IL 13 STAGE 8
SCALE: 30 SHEET NO. 1 OF 1 SHEETS STA. TO STA.

F.A.P. R.T.E. 331	SECTION (IX-10R-5,RS-3,N-5,TS-4)	COUNTY WILLIAMSON	TOTAL SHEETS 288	SHEET NO. 76
CONTRACT NO. 78203				