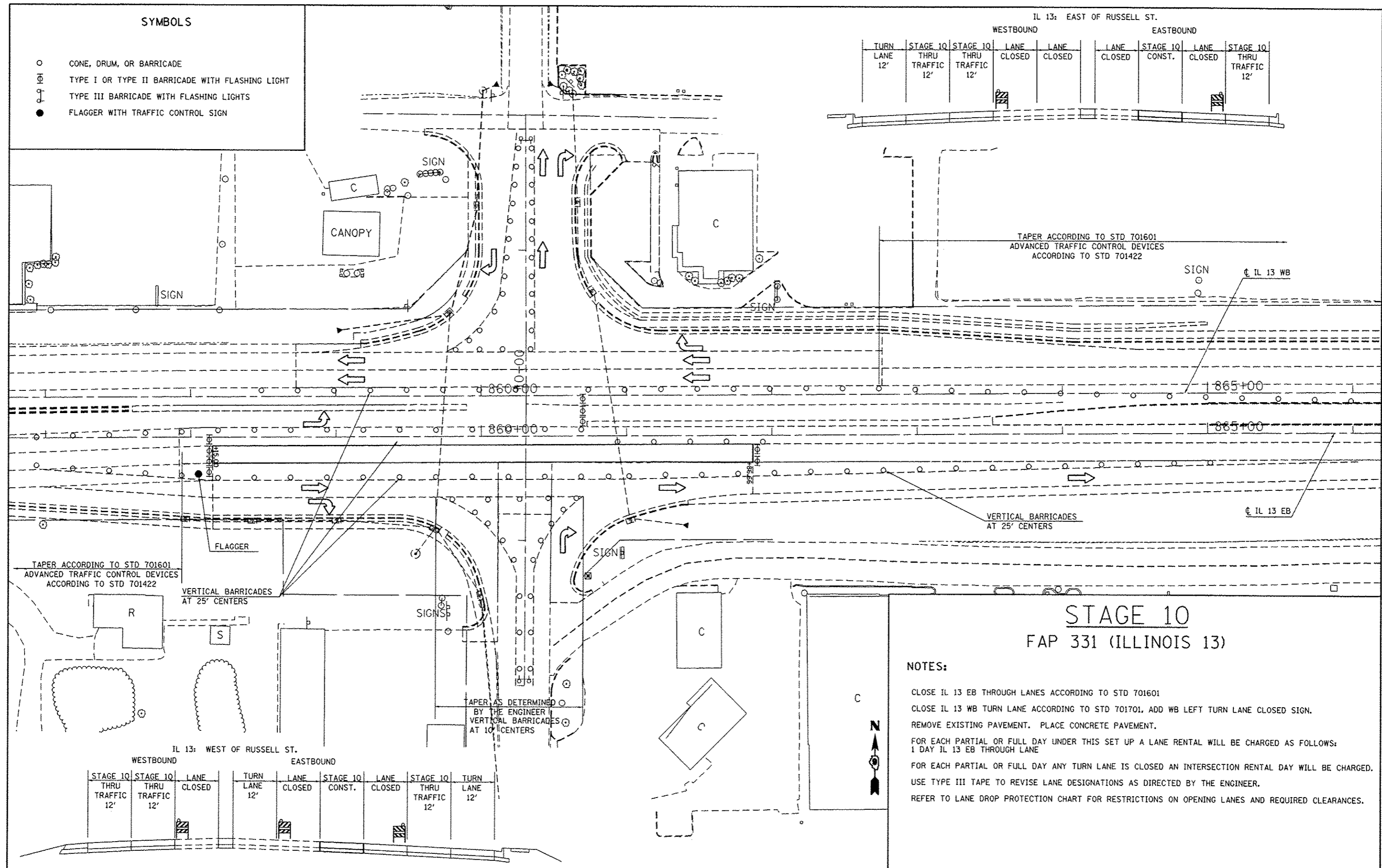


SYMBOLS

- CONE, DRUM, OR BARRICADE
- ⊕ TYPE I OR TYPE II BARRICADE WITH FLASHING LIGHT
- ⊕ TYPE III BARRICADE WITH FLASHING LIGHTS
- FLAGGER WITH TRAFFIC CONTROL SIGN

IL 13: EAST OF RUSSELL ST.

WESTBOUND				EASTBOUND				
TURN LANE	STAGE 10 THRU TRAFFIC	STAGE 10 THRU TRAFFIC	LANE CLOSED	LANE CLOSED	LANE CLOSED	STAGE 10 CONST.	LANE CLOSED	STAGE 10 THRU TRAFFIC
12'	12'	12'						12'



TAPER ACCORDING TO STD 701601
ADVANCED TRAFFIC CONTROL DEVICES
ACCORDING TO STD 701422

VERTICAL BARRICADES
AT 25' CENTERS

TAPER ACCORDING TO STD 701601
ADVANCED TRAFFIC CONTROL DEVICES
ACCORDING TO STD 701422

VERTICAL BARRICADES
AT 25' CENTERS

TAPER AS DETERMINED
BY THE ENGINEER
VERTICAL BARRICADES
AT 10' CENTERS

STAGE 10
FAP 331 (ILLINOIS 13)

NOTES:

- CLOSE IL 13 EB THROUGH LANES ACCORDING TO STD 701601
- CLOSE IL 13 WB TURN LANE ACCORDING TO STD 701701, ADD WB LEFT TURN LANE CLOSED SIGN.
- REMOVE EXISTING PAVEMENT. PLACE CONCRETE PAVEMENT.
- FOR EACH PARTIAL OR FULL DAY UNDER THIS SET UP A LANE RENTAL WILL BE CHARGED AS FOLLOWS:
1 DAY IL 13 EB THROUGH LANE
- FOR EACH PARTIAL OR FULL DAY ANY TURN LANE IS CLOSED AN INTERSECTION RENTAL DAY WILL BE CHARGED.
- USE TYPE III TAPE TO REVISE LANE DESIGNATIONS AS DIRECTED BY THE ENGINEER.
- REFER TO LANE DROP PROTECTION CHART FOR RESTRICTIONS ON OPENING LANES AND REQUIRED CLEARANCES.

IL 13: WEST OF RUSSELL ST.

WESTBOUND				EASTBOUND				
STAGE 10 THRU TRAFFIC	STAGE 10 THRU TRAFFIC	LANE CLOSED	TURN LANE	LANE CLOSED	STAGE 10 CONST.	LANE CLOSED	STAGE 10 THRU TRAFFIC	TURN LANE
12'	12'		12'				12'	12'

FILE NAME =	USER NAME = kallejkd	DESIGNED -	REVISED -
c:\pwork\pwork\kallejkd\0184451\78201-1\stg.dgn	raht:stg.dgn	DRAWN -	REVISED -
		CHECKED -	REVISED -
		DATE -	REVISED -

DESIGNED -	REVISED -
DRAWN -	REVISED -
CHECKED -	REVISED -
DATE -	REVISED -

STATE OF ILLINOIS
DEPARTMENT OF TRANSPORTATION

IL 13 STAGE 10

SCALE: 30 SHEET NO. 1 OF 1 SHEETS STA. TO STA.

F.A.P. RTE.	SECTION	COUNTY	TOTAL SHEETS	SHEET NO.
331	(X)-1(R)-5,RS-3,N-5,TS-4	WILLIAMSON	288	78
CONTRACT NO. 78203				
ILLINOIS FED. AID PROJECT				