

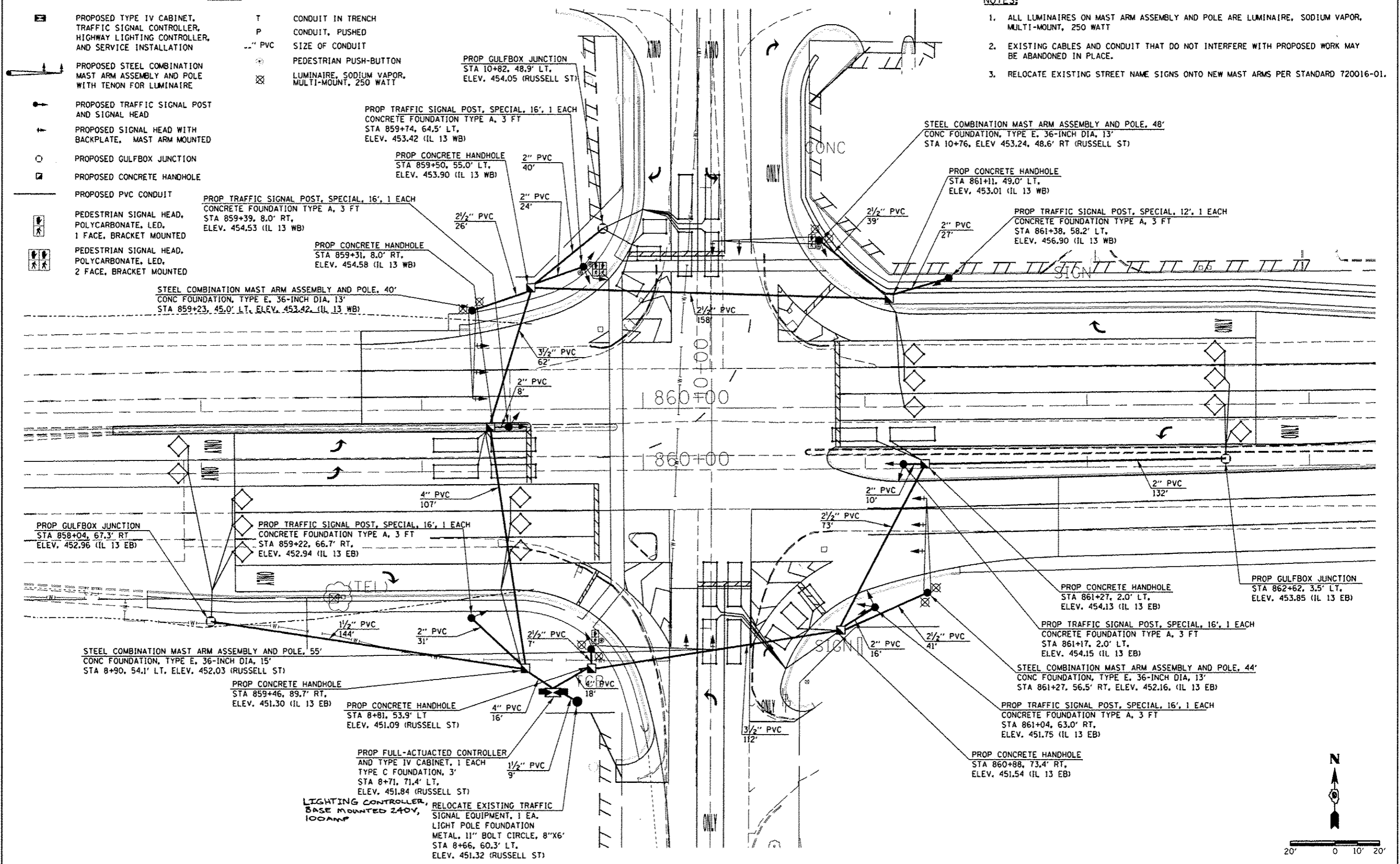
LEGEND

- PROPOSED TYPE IV CABINET, TRAFFIC SIGNAL CONTROLLER, HIGHWAY LIGHTING CONTROLLER, AND SERVICE INSTALLATION
- PROPOSED STEEL COMBINATION MAST ARM ASSEMBLY AND POLE WITH TENON FOR LUMINAIRE
- PROPOSED TRAFFIC SIGNAL POST AND SIGNAL HEAD
- PROPOSED SIGNAL HEAD WITH BACKPLATE, MAST ARM MOUNTED
- PROPOSED GULFBOX JUNCTION
- PROPOSED CONCRETE HANDHOLE
- PROPOSED PVC CONDUIT
- PEDESTRIAN SIGNAL HEAD, POLYCARBONATE, LED, 1 FACE, BRACKET MOUNTED
- PEDESTRIAN SIGNAL HEAD, POLYCARBONATE, LED, 2 FACE, BRACKET MOUNTED

- T CONDUIT IN TRENCH
- P CONDUIT, PUSHED
- PVC SIZE OF CONDUIT
- ⊙ PEDESTRIAN PUSH-BUTTON
- ⊗ LUMINAIRE, SODIUM VAPOR, MULTI-MOUNT, 250 WATT

NOTES:

1. ALL LUMINAIRES ON MAST ARM ASSEMBLY AND POLE ARE LUMINAIRE, SODIUM VAPOR, MULTI-MOUNT, 250 WATT
2. EXISTING CABLES AND CONDUIT THAT DO NOT INTERFERE WITH PROPOSED WORK MAY BE ABANDONED IN PLACE.
3. RELOCATE EXISTING STREET NAME SIGNS ONTO NEW MAST ARMS PER STANDARD 720016-01.



FILE NAME	USER NAME - #USER#	DESIGNED -	REVISED -	STATE OF ILLINOIS DEPARTMENT OF TRANSPORTATION	PROPOSED TRAFFIC SIGNALS AND LIGHTING - IL 13/RUSSELL ST.	F.A. RTE.	SECTION	COUNTY	TOTAL SHEETS	SHEET NO.		
ct:\pwwork\pwwork\kellay\kellay\010445117029	shah-taigudgn	DRAWN -	REVISED -			331	(1X-11R-5,RS-3,N-5,TS-4	WILLIAMSON	288	133		
	PLT SCALE = 48.8888 1/16"	CHECKED -	REVISED -			SCALE: SHEET NO. OF SHEETS STA. TO STA.		CONTRACT NO. 78203				
	PLT DATE = 5/11/2012	DATE -	REVISED -			[ILLINOIS] FED. AID PROJECT						