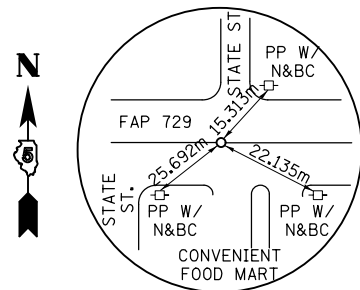
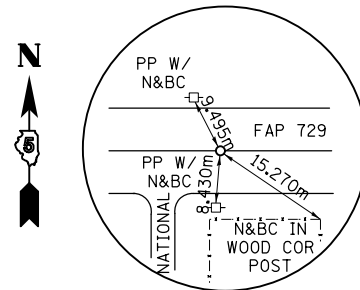


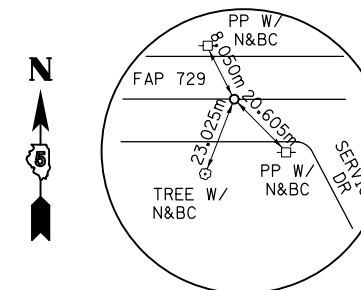
FAP RTE	SECTION	COUNTY	TOTAL SHEETS	SHEET NO.
729	*	VERMILION	298	51
FED. ROAD DIST. NO.		ILLINOIS FED. AID PROJECT		
* 36(W,RS-1) & 34Z-2(W,RS) CONTRACT #90939				



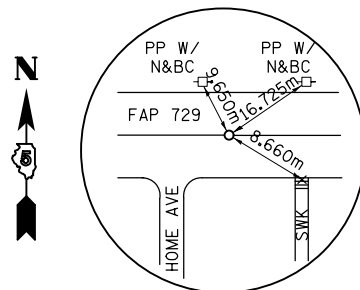
PI STATION 93+800.808
N 384893.693, E 362956.602
IP W/CAP



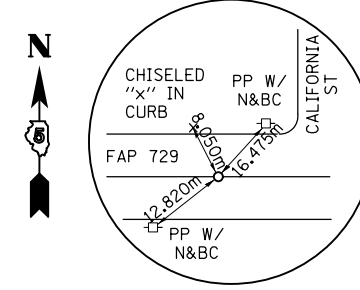
PI STATION 93+956.769
N 384902.648, E 363112.306
IP W/CAP



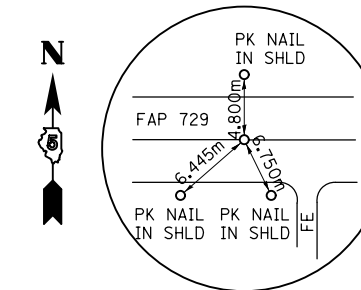
PI STATION 94+477.604
N 384932.481, E 363632.286
IP W/CAP



PT STATION 94+632.744
N 384940.753, E 363787.205
IP W/CAP



PI STATION 95+059.334
N 384963.825, E 364213.170
IP W/CAP



POT STATION 95+437.575
N 384984.486, E 364590.847
PK NAIL

NOTE: ALL COORDINATES ARE GROUND COORDINATES.

BENCH MARKS

BM #1	CHISELED "□" IN THE SE CORNER OF AN ABANDONED FOUNDATION AT BUILDING #1905, STATION 94+029.550 8.60 m LT	BM #7	TOP OF THE NORTHERN MOST FLANGE BOLT ON A FIRE HYDRANT, STATION 94+889.000, ELEV 193.569
BM #2	TOP OF FLANGE BOLT BETWEEN THE "E" AND "L" IN MUELLER ON A FIRE HYDRANT, STATION 94+209.750, ELEV 193.373	BM #8	CHISELED "□" IN THE N SIDE OF A TRAFFIC SIGNAL CANTILEVER FOUNDATION, STATION 94+988.250, ELEV 195.237
BM #3	CHISELED "X" IN THE S SIDE OF A TRAFFIC SIGNAL CANTILEVER FOUNDATION, STATION 94+347.850, ELEV 194.378	BM #9	NW CORNER OF THE BOTTOM STEP TO HOUSE #2812, STATION 95+068.200, ELEV 196.307
BM #4	CHISELED "□" IN THE NE CORNER OF A CONCRETE SLAB AROUND A MANHOLE, STATION 94+488.450, ELEV 195.328	BM #10	TOP OF THE FLANGE BOLT BETWEEN THE "E" AND "L" IN MUELLER ON A FIRE HYDRANT, STATION 95+178.600, ELEV 196.922
BM #5	SE CORNER OF THE BOTTOM STEP TO HOUSE #2405, STATION 94+612.850, ELEV 195.268	BM #11	NE CORNER OF THE BOTTOM STEP TO HOUSE #3010, STATION 95+289.800, ELEV 194.167
BM #6	TOP OF THE FLANGE BOLT BETWEEN CHATTANOOGA AND TENNESSEE ON A FIRE HYDRANT, STATION 94+725.500, ELEV 194.803		

FAP 729
REFERENCE TIES
AND
BENCH MARKS

8/17/2012