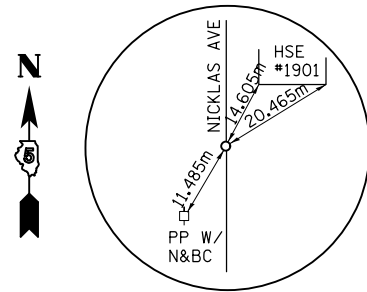
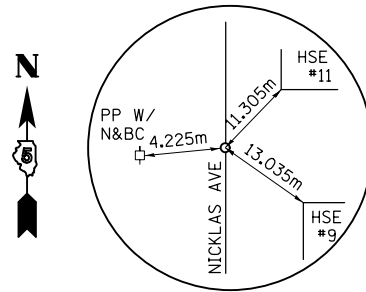


FAP RTE	SECTION	COUNTY	TOTAL SHEETS	SHEET NO.
729	•	VERMILION	298	52
FED. ROAD DIST. NO.		ILLINOIS FED. AID PROJECT		

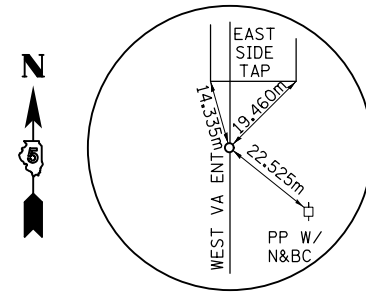
• 36(W,RS-1) & 34Z-2(W,RS)  
CONTRACT #90939



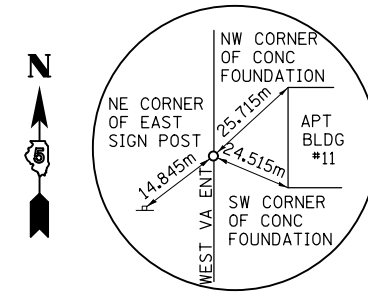
POT STATION 51+000.000 (NICKLAS AVE)  
N 384904.908, E 363151.694  
PK NAIL



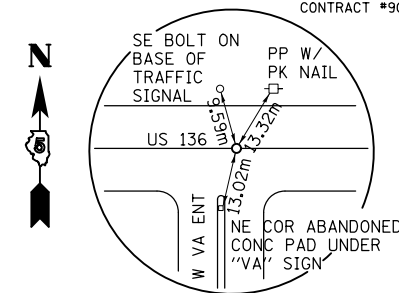
POT STATION 51+107.772 (NICKLAS AVE)  
N 385012.674, E 363150.600  
PK NAIL



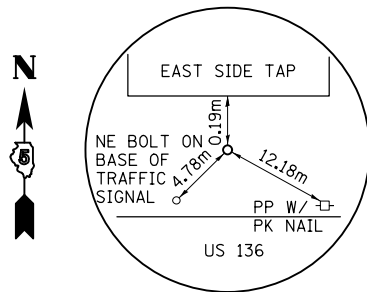
POT STATION 72+000.000 (WEST VA ENT)  
N 384909.729, E 363235.717  
PK NAIL



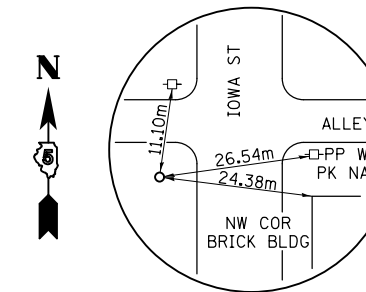
POT STATION 71+943.746 (WEST VA ENT)  
N 384853.552, E 363238.658  
PK NAIL



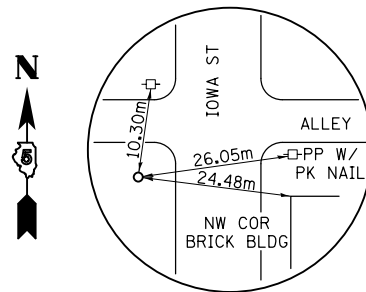
INTERSECTION STATION 52+000 (IOWA ST)  
N 384909.844, E 363237.720  
PK NAIL



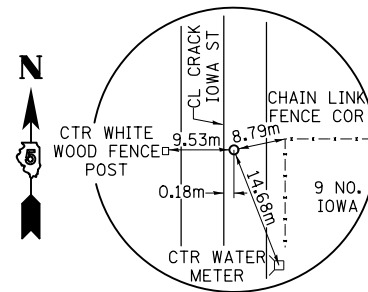
PC STATION 52+014.101 (IOWA ST)  
N 384923.921, E 363236.912  
DRILL HOLE SET



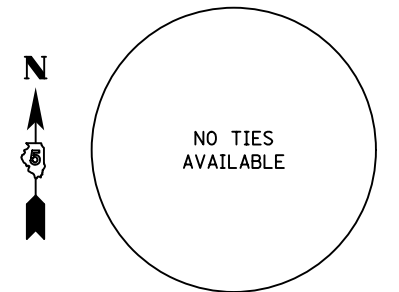
PT STATION 52+057.266 (IOWA ST)  
N 384965.364, E 363246.645  
PK NAIL



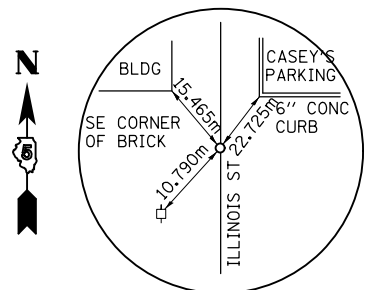
PC STATION 52+057.651 (IOWA ST)  
N 384965.698, E 363246.836  
PK NAIL



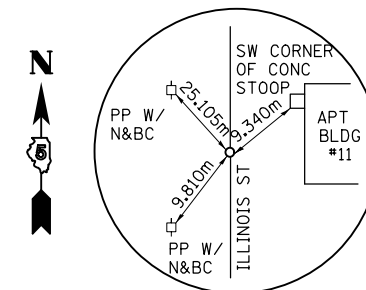
PT STATION 52+097.164 (IOWA ST)  
N 385003.491, E 363256.695  
DRILL HOLE SET



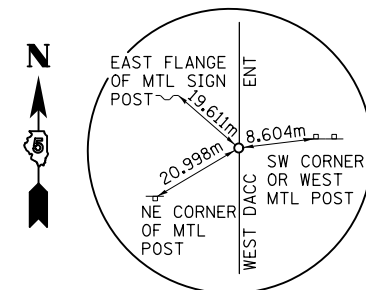
POT STATION 52+154.646 (IOWA ST)  
N 385060.971, E 363256.223  
PK NAIL



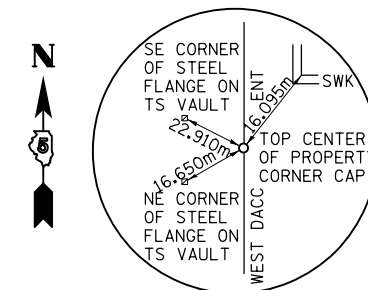
POT STATION 53+000.000 (ILLINOIS ST)  
N 384917.509, E 363371.333  
PK NAIL



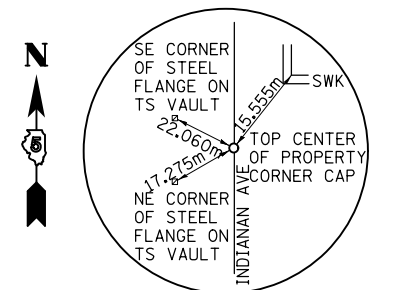
POT STATION 53+100.418 (ILLINOIS ST)  
N 385017.924, E 363370.616  
PK NAIL



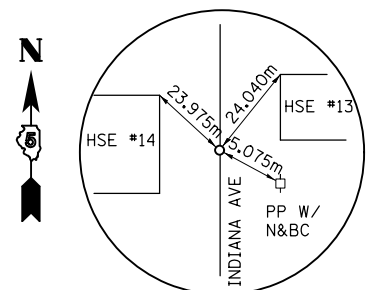
POT STATION 72+950.290 (WEST DACC ENT)  
N 384874.267, E 363485.478  
PK NAIL



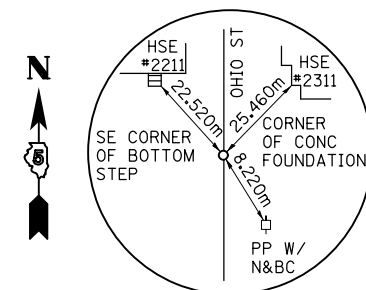
POT STATION 73+000.000 (WEST DACC ENT)  
N 384924.031, E 363484.998  
PK NAIL



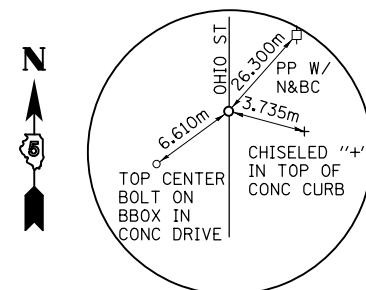
POT STATION 54+000.000 (INDIANA AVE)  
N 384924.079, E 363485.841  
PK NAIL



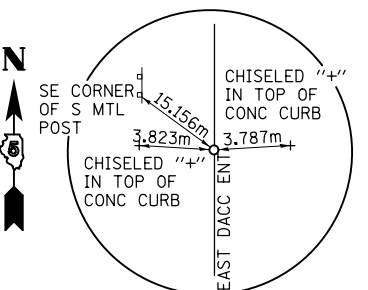
POT STATION 54+100.330 (INDIANA AVE)  
N 385024.403, E 363484.761  
PK NAIL



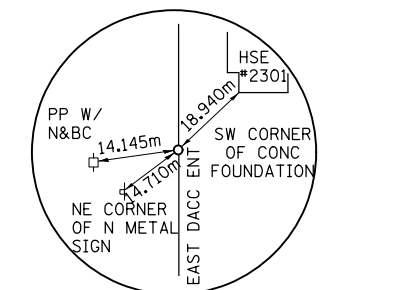
POT STATION 55+000.000 (OHIO ST)  
N 384930.665, E 363600.634  
PK NAIL



POT STATION 55+098.669 (OHIO ST)  
N 385029.320, E 363598.963  
PK NAIL



POT STATION 73+972.830 (EAST DACC ENT)  
N 384904.076, E 363611.539  
PK NAIL



POT STATION 74+000.000 (EAST DACC ENT)  
N 384931.249, E 363610.807  
PK NAIL

SIDESTREET  
REFERENCE TIES

NOTE: ALL COORDINATES ARE GROUND COORDINATES.

8/17/2012