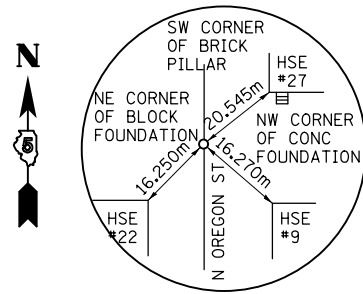
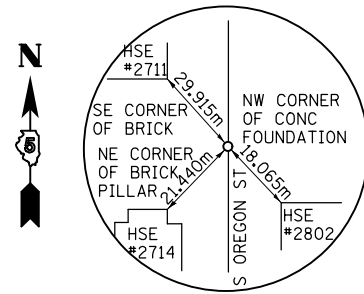


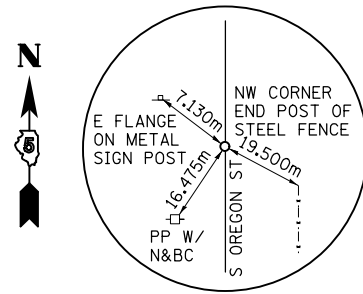
FAP RTE	SECTION	COUNTY	TOTAL SHEETS	SHEET NO.
729	•	VERMILION	298	54
FED. ROAD DIST. NO.		ILLINOIS FED. AID PROJECT		
• 36(W,RS-1) & 34Z-2(W,RS) CONTRACT #90939				



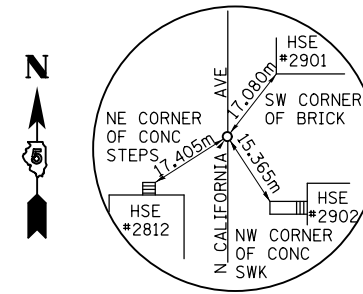
POT STATION 62+098.677 (N OREGON ST)  
N 385058.269, E 364133.728  
PK NAIL



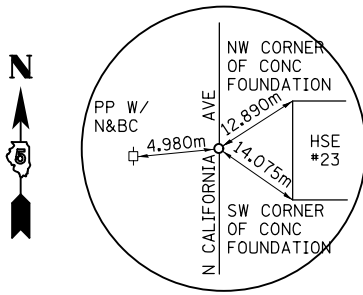
POT STATION 63+000.000 (S OREGON ST)  
N 384959.668, E 364136.425  
PK NAIL



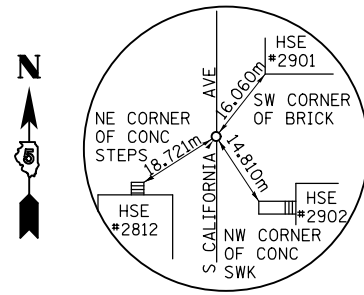
POT STATION 62+953.928 (S OREGON ST)  
N 384913.606, E 364137.377  
PK NAIL



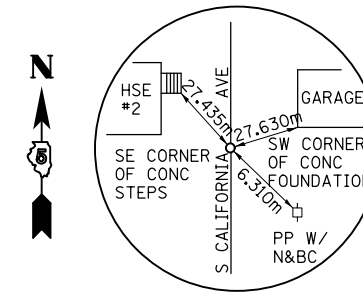
POT STATION 64+000.000 (N CALIFORNIA AVE)  
N 384965.086, E 364236.225  
PK NAIL



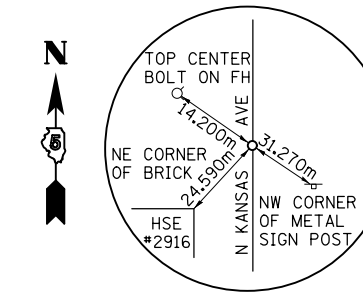
POT STATION 64+104.672 (N CALIFORNIA AVE)  
N 385069.747, E 364234.714  
PK NAIL



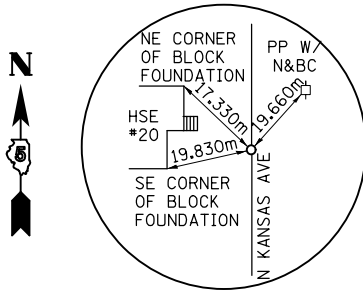
POT STATION 65+000.000 (S CALIFORNIA AVE)  
N 384965.184, E 364238.021  
PK NAIL



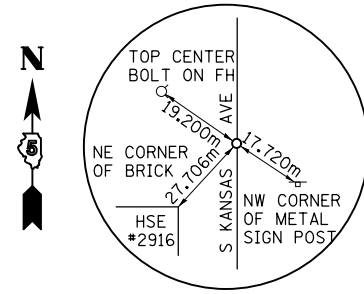
POT STATION 64+891.771 (S CALIFORNIA AVE)  
N 384856.975, E 364240.113  
PK NAIL



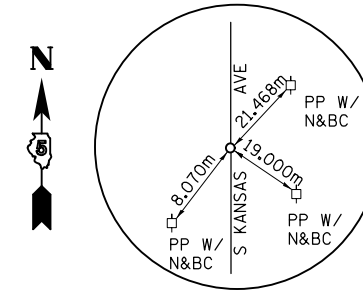
POT STATION 66+000.000 (N KANSAS AVE)  
N 384970.656, E 364338.040  
PK NAIL



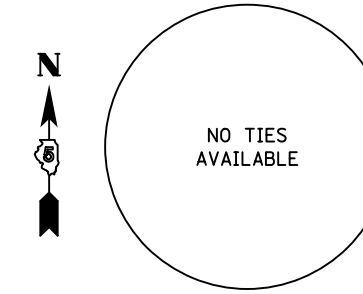
POT STATION 66+101.646 (N KANSAS AVE)  
N 385072.286, E 364336.244  
PK NAIL



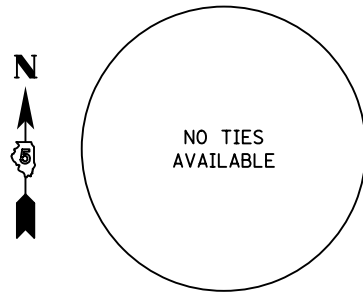
POT STATION 67+000.000 (S KANSAS AVE)  
N 384971.120, E 364346.511  
PK NAIL



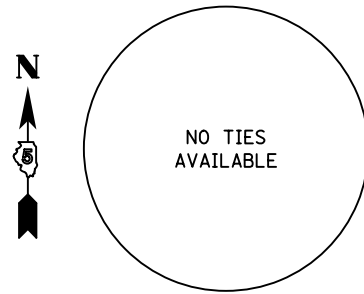
POT STATION 66+899.164 (S KANSAS AVE)  
N 384870.301, E 364348.359  
PK NAIL



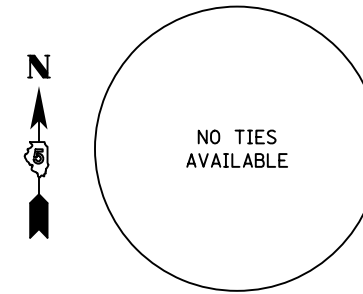
POT STATION 99+900.000 (SS OUTFALL DITCH)  
N 384882.498, E 363978.756  
PK NAIL



PC STATION 99+933.967 (SS OUTFALL DITCH)  
N 384896.367, E 364009.763  
PK NAIL



PT STATION 99+971.841 (SS OUTFALL DITCH)  
N 384925.935, E 364030.391  
PK NAIL



POT STATION 100+000.000 (SS OUTFALL DITCH)  
N 384954.029, E 364032.307  
PK NAIL

NOTE: ALL COORDINATES ARE GROUND COORDINATES.

SIDESTREET  
REFERENCE TIES