

95+200

95+250

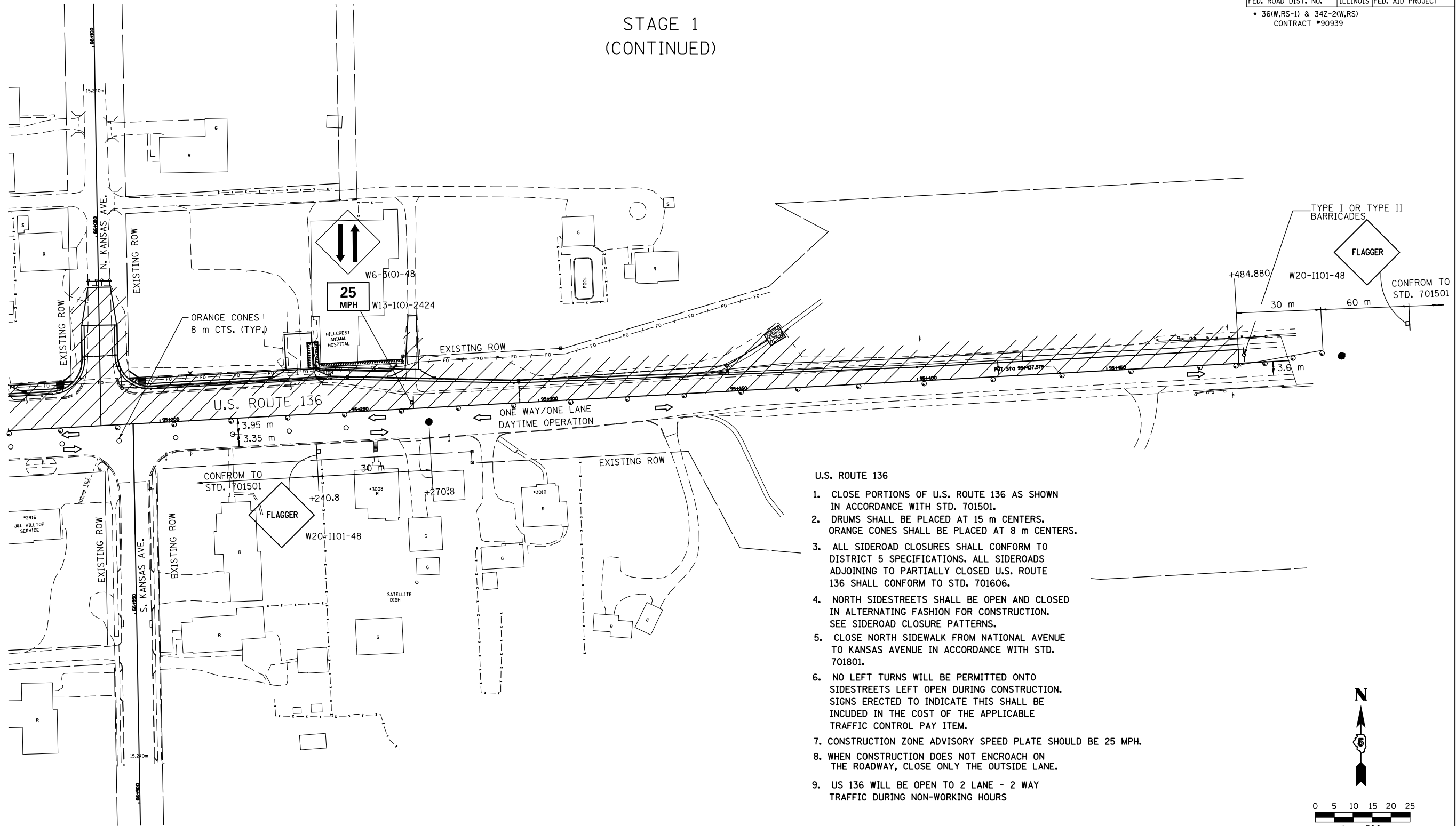
95+300

95+350

95+400

F.A.P. RTE.	SECTION	COUNTY	TOTAL SHEETS	SHEET NO.
729	*	VERMILION	298	65
STA. 95+150		TO STA. 95+420		
FED. ROAD DIST. NO.		ILLINOIS FED. AID PROJECT		
• 36(W,RS-1) & 34Z-2(W,RS) CONTRACT #90939				

STAGE 1 (CONTINUED)



U.S. ROUTE 136

1. CLOSE PORTIONS OF U.S. ROUTE 136 AS SHOWN IN ACCORDANCE WITH STD. 701501.
2. DRUMS SHALL BE PLACED AT 15 m CENTERS. ORANGE CONES SHALL BE PLACED AT 8 m CENTERS.
3. ALL SIDEROAD CLOSURES SHALL CONFORM TO DISTRICT 5 SPECIFICATIONS. ALL SIDEROADS ADJOINING TO PARTIALLY CLOSED U.S. ROUTE 136 SHALL CONFORM TO STD. 701606.
4. NORTH SIDESTREETS SHALL BE OPEN AND CLOSED IN ALTERNATING FASHION FOR CONSTRUCTION. SEE SIDEROAD CLOSURE PATTERNS.
5. CLOSE NORTH SIDEWALK FROM NATIONAL AVENUE TO KANSAS AVENUE IN ACCORDANCE WITH STD. 701801.
6. NO LEFT TURNS WILL BE PERMITTED ONTO SIDESTREETS LEFT OPEN DURING CONSTRUCTION. SIGNS ERECTED TO INDICATE THIS SHALL BE INCLUDED IN THE COST OF THE APPLICABLE TRAFFIC CONTROL PAY ITEM.
7. CONSTRUCTION ZONE ADVISORY SPEED PLATE SHOULD BE 25 MPH.
8. WHEN CONSTRUCTION DOES NOT ENCROACH ON THE ROADWAY, CLOSE ONLY THE OUTSIDE LANE.
9. US 136 WILL BE OPEN TO 2 LANE - 2 WAY TRAFFIC DURING NON-WORKING HOURS

ct:\pw_work\pwidot\ceer\lock\j\d0313241\stage1-3.dgn
8/17/2012

LEGEND	
	WORK AREA
	CONE OR BARRICADE WITH LIGHT
	ARROW BOARD
	DIRECTION OF TRAFFIC
	TYPE III BARRICADE WITH FLASHING LIGHT
	BARRICADE WITH STEADY LIGHT
	SIGN ON PORTABLE SUPPORT
	FLAGGER WITH TRAFFIC CONTROL SIGN

REVISIONS	
NAME	DATE

ILLINOIS DEPARTMENT OF TRANSPORTATION
MAINTENANCE OF TRAFFIC PLANS
U.S. ROUTE 136

SCALE 1:500
DATE 8/03

DRAWN BY FML
CHECKED BY IYL