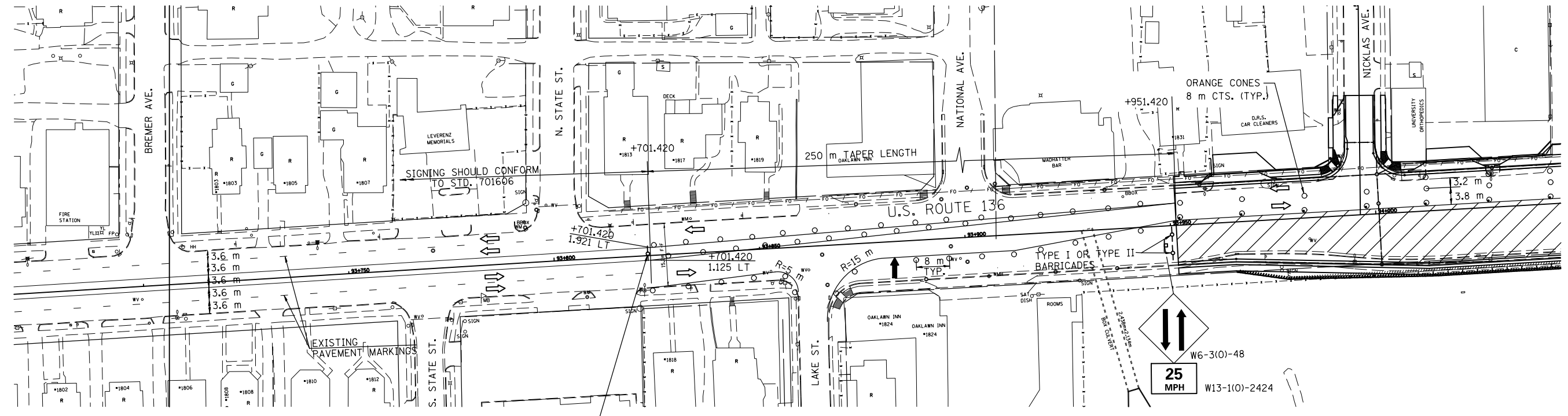


93+700 93+750 93+800 93+850 93+900 93+950

F.A.P. RTE.	SECTION	COUNTY	TOTAL SHEETS	SHEET NO.
729		VERMILION	298	69
STA. 93+700		TO STA. 94+400		
FED. ROAD DIST. NO.		ILLINOIS	FED. AID PROJECT	
• 36(W,RS-1) & 34Z-2(W,RS)		CONTRACT #90939		

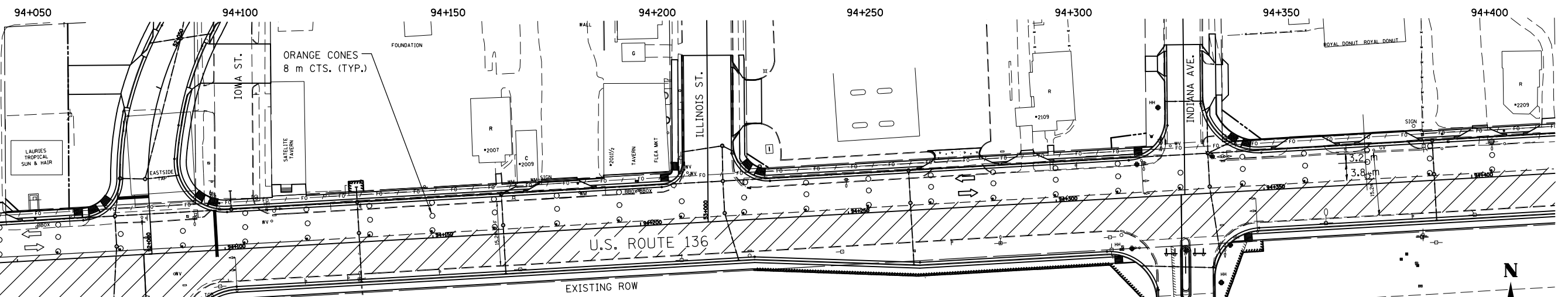
STAGE 4



TYPE I OR TYPE II BARRICADES

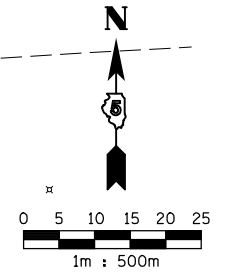
SIDE ROAD CLOSURE PATTERNS

WEST V.A. ENTRANCE OPEN AT ALL TIMES
WEST D.A.C.C. ENTRANCE CLOSED WEST D.A.C.C. ENTRANCE OPEN



- U.S. ROUTE 136
- CLOSE PORTIONS OF U.S. ROUTE 136 AS SHOWN IN ACCORDANCE WITH STD. 701606.
 - DRUMS SHALL BE PLACED AT 15 m CENTERS. ORANGE CONES SHALL BE PLACED AT 8 m CENTERS.
 - ALL SIDEROAD CLOSURES SHALL CONFORM TO DISTRICT 5 SPECIFICATIONS. ALL SIDEROADS ADJOINING TO PARTIALLY CLOSED U.S. ROUTE 136 SHALL CONFORM TO STD. 701606.
 - SOUTH SIDESTREETS SHALL BE OPEN AND CLOSED IN ALTERNATING FASHION FOR CONSTRUCTION. SEE SIDEROAD CLOSURE PATTERNS.
 - NO LEFT TURNS WILL BE PERMITTED ONTO SIDESTREETS LEFT OPEN DURING CONSTRUCTION. SIGNS ERECTED TO INDICATE THIS SHALL BE INCLUDED IN THE COST OF THE APPLICABLE TRAFFIC CONTROL PAY ITEM.

- CONSTRUCTION ZONE ADVISORY SPEED PLATE SHOULD BE 25 MPH.
- LIMIT CLOSURE TO THE AREA IN WHICH MILLING & BINDER COURSE CAN BE CONSTRUCTED IN ONE DAY'S PRODUCTION.



LEGEND	
	WORK AREA
	CONE OR BARRICADE WITH LIGHT
	ARROW BOARD
	DIRECTION OF TRAFFIC
	TYPE III BARRICADE WITH FLASHING LIGHT
	BARRICADE WITH STEADY LIGHT
	SIGN ON PORTABLE SUPPORT
	CONE

REVISIONS	
NAME	DATE

ILLINOIS DEPARTMENT OF TRANSPORTATION
MAINTENANCE OF TRAFFIC PLANS
U.S. ROUTE 136

SCALE 1:500 DRAWN BY FML
DATE 8/03 CHECKED BY IYL

c:\pw\work\pwidot\ceer\lock\j\d0313241\stage4-1.dgn
 8/17/2012