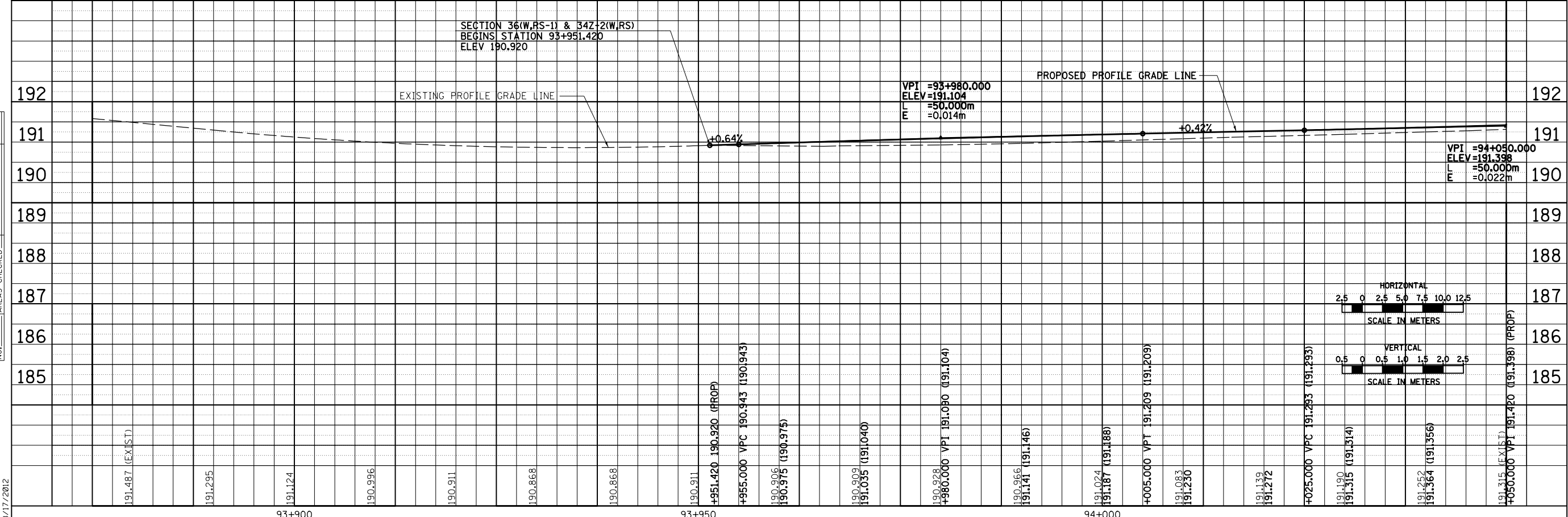
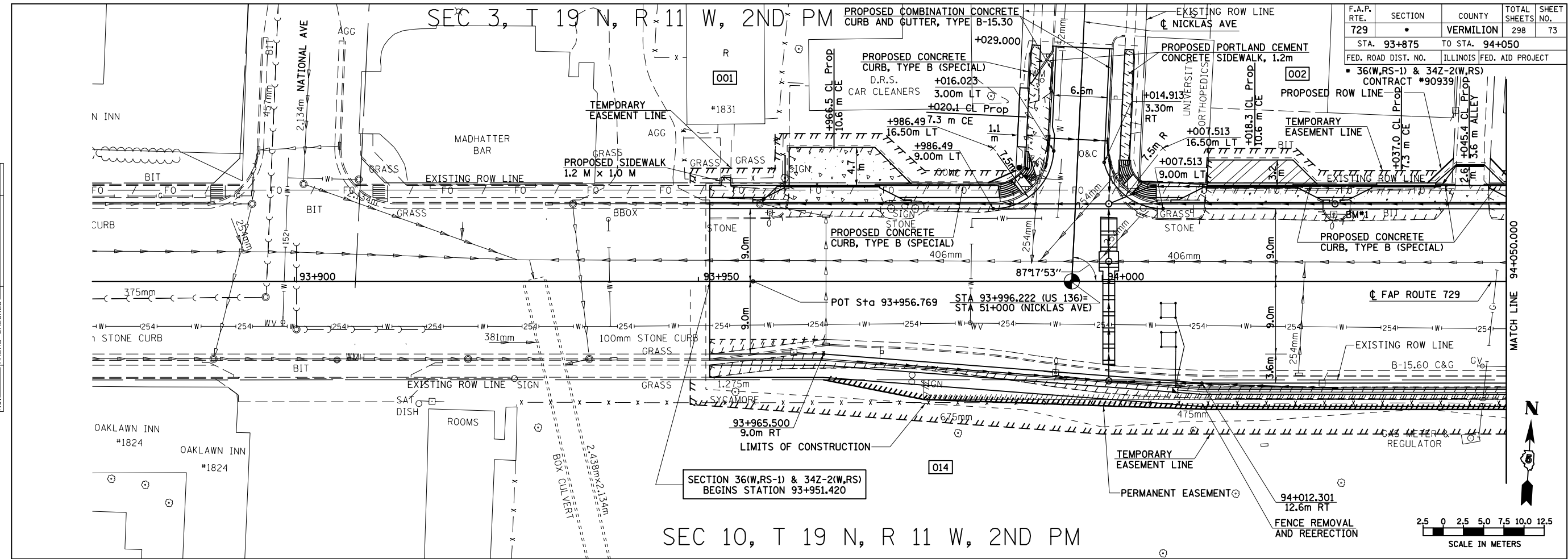


F.A.P. RTE.	SECTION	COUNTY	TOTAL SHEETS	SHEET NO.
729	*	VERMILION	298	73
STA. 93+875	TO STA. 94+050			
FED. ROAD DIST. NO.	ILLINOIS FED. AID PROJECT			
	* 36(W,RS-1) & 34Z-2(W,RS) CONTRACT #90939			

BY	DATE
FINAL SURVEYED	
SURVEY PLOTTED	
NOTE BOOK TEMPLATE	
AREAS CHECKED	
NO.	

BY	DATE
ORIGINAL SURVEYED	
SURVEY PLOTTED	
NOTE BOOK TEMPLATE	
AREAS CHECKED	
NO.	



8/17/2012

c:\pw_work\pwwidot\cearlock\j\d0313241\20003p001.dgn

ROADWAY PLAN & PROFILE, FAP 729 (US136) STA 93+875 TO STA 94+050