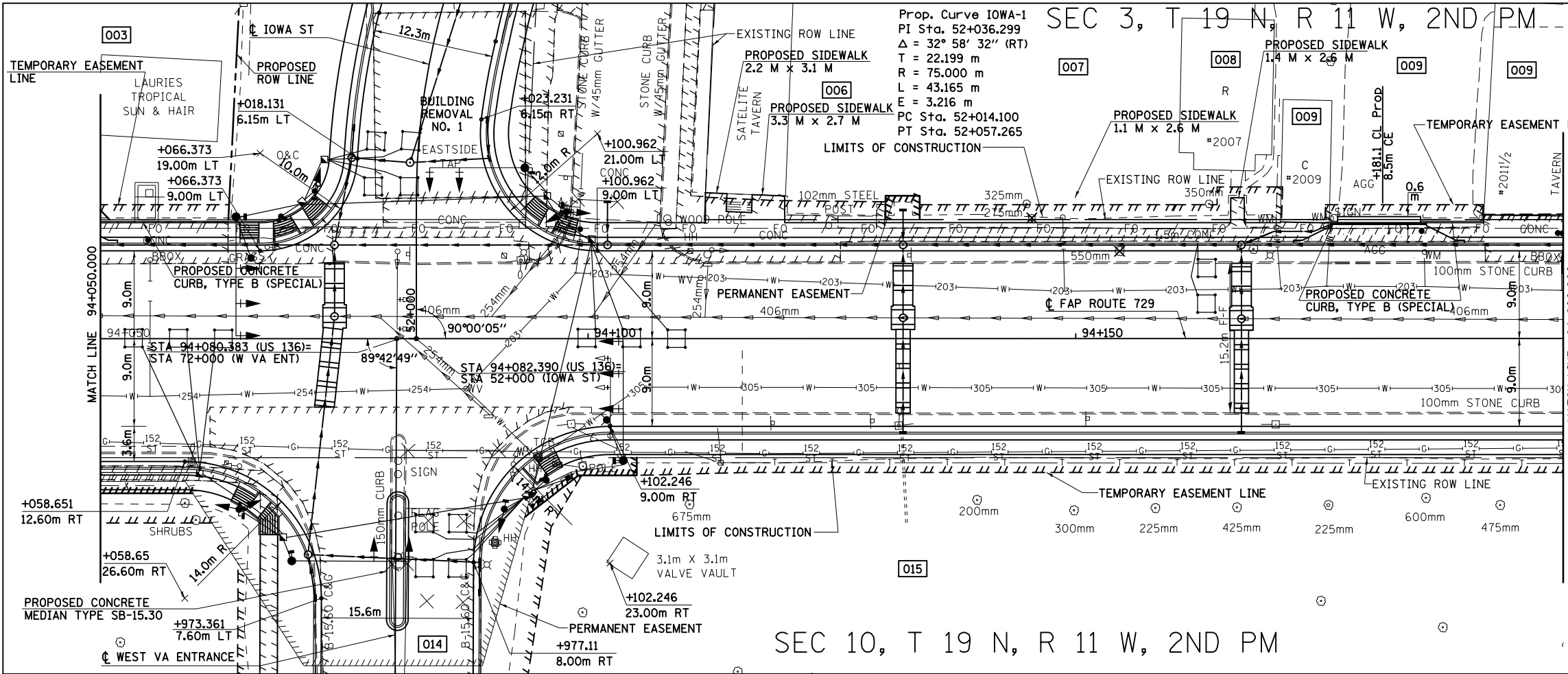
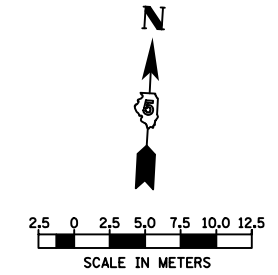


F.A.P. RTE.	SECTION	COUNTY	TOTAL SHEETS	SHEET NO.
729		VERMILION	298	74
STA. 94+050		TO STA. 94+200		
FED. ROAD DIST. NO.		ILLINOIS FED. AID PROJECT		
• 36(W,RS-1) & 34Z-2(W,RS) CONTRACT #90939				

SEC 3, T 19 N, R 11 W, 2ND PM

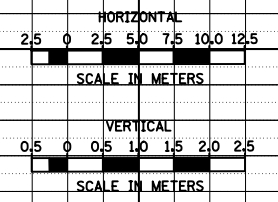
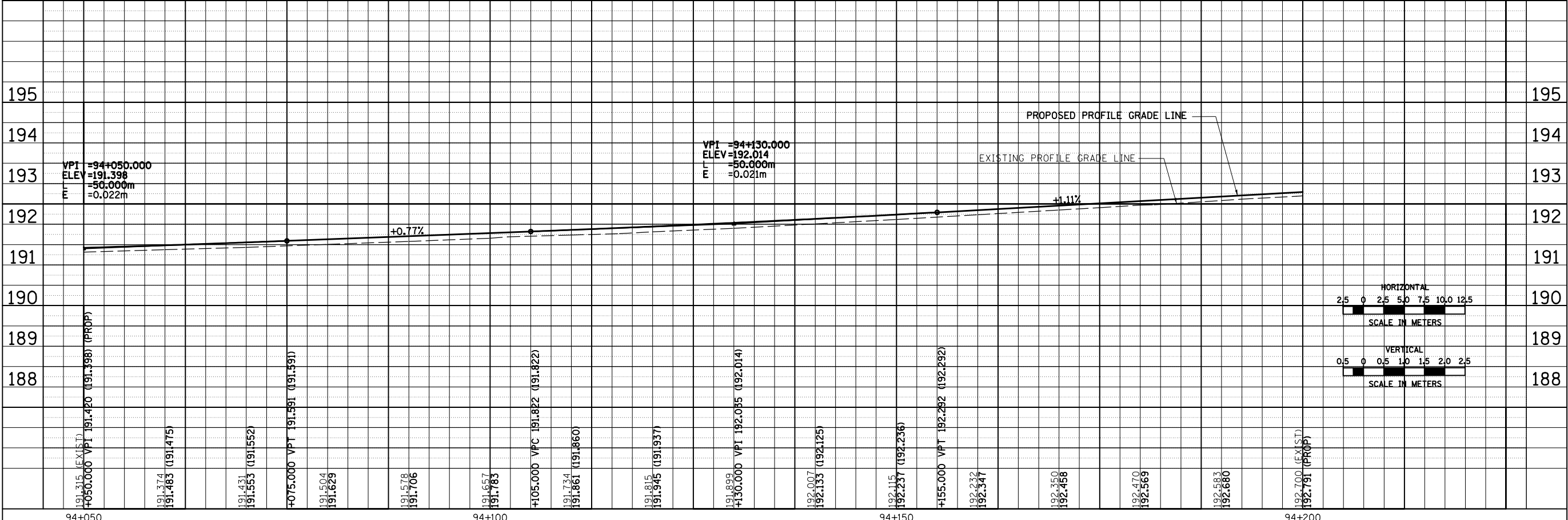


SEC 10, T 19 N, R 11 W, 2ND PM



BY	DATE
FINAL SURVEYED	
SURVEY PLOTTED	
NOTE BOOK TEMPLATE	
AREAS CHECKED	
NO.	

BY	DATE
ORIGINAL SURVEYED	
SURVEY PLOTTED	
NOTE BOOK TEMPLATE	
AREAS CHECKED	
NO.	



8/17/2012

ci:\pw\_work\p\dot\cearlock\j\d0313241\20003p002.dgn

ROADWAY PLAN & PROFILE, FAP 729 (US136) STA 94+050 TO STA 94+200