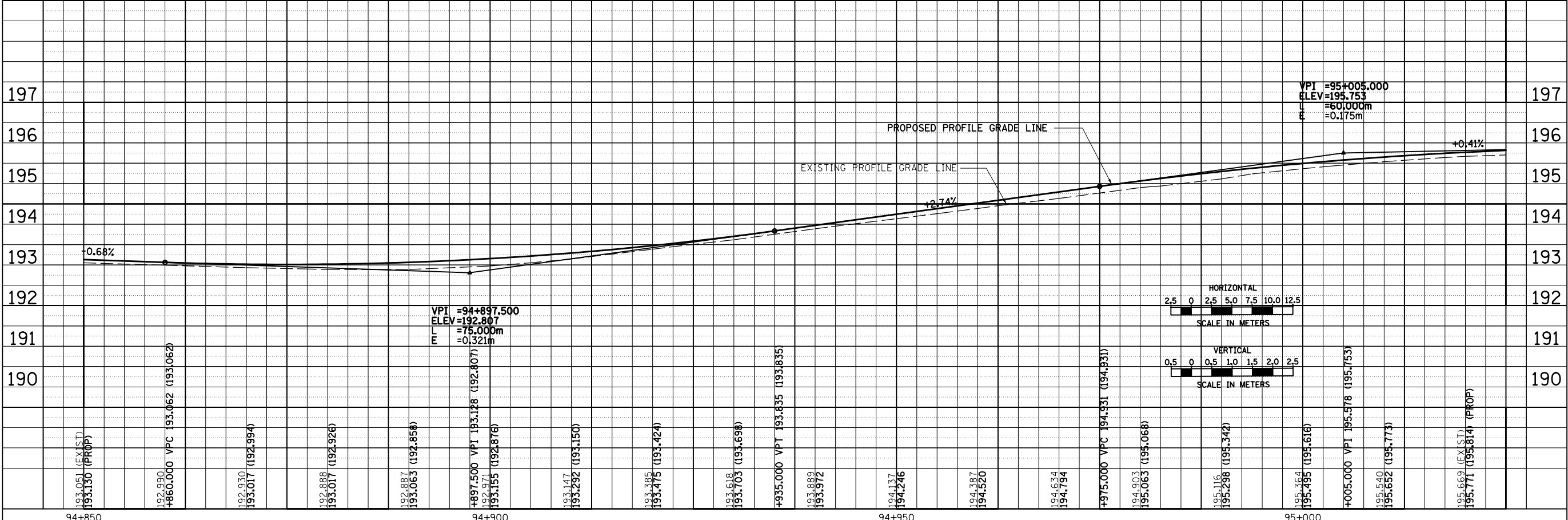
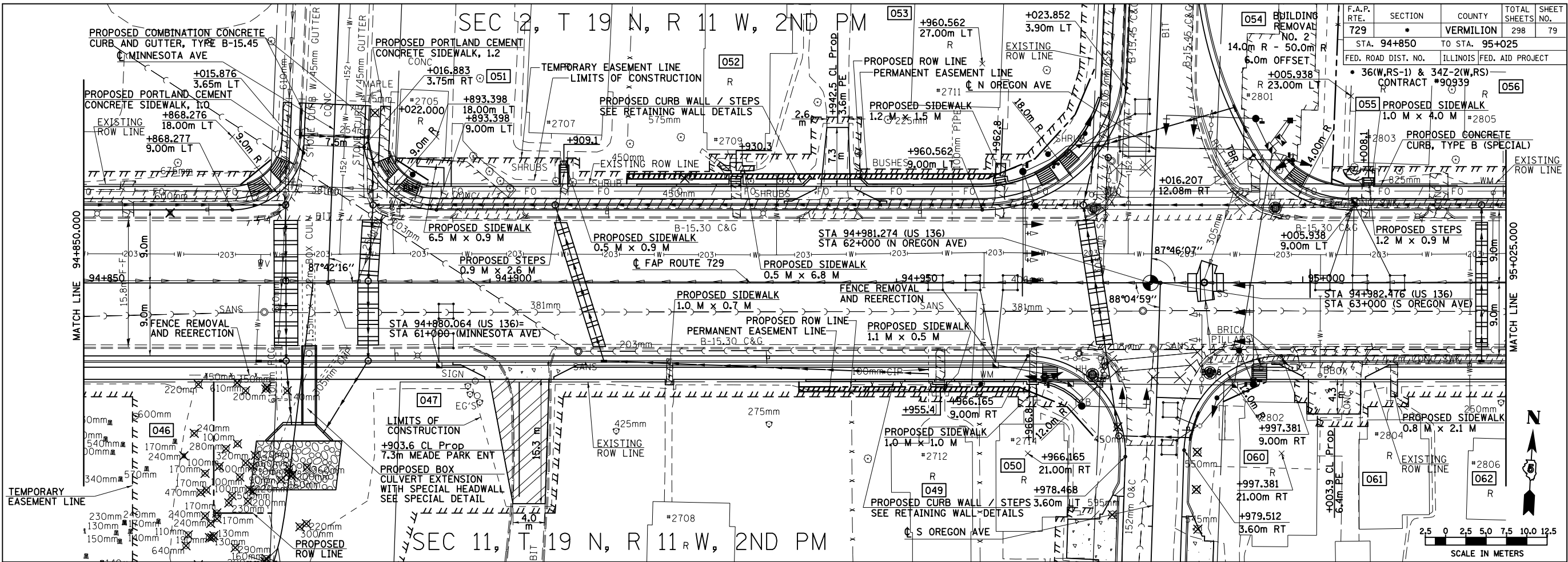


F.A.P. RTE. 729	SECTION	COUNTY	TOTAL SHEETS	SHEET NO.
STA. 94+850 TO STA. 95+025		VERMILION	298	79
FED. ROAD DIST. NO.	ILLINOIS FED. AID PROJECT			
	36(W,RS-1) & 34Z-2(W,RS) CONTRACT #90939			



FINAL SURVEYED	DATE
SURVEY PLOTTED	
NOTE BOOK TEMPLATE	
AREAS CHECKED	
NO.	

ORIGINAL SURVEYED	DATE
SURVEY PLOTTED	
NOTE BOOK TEMPLATE	
AREAS CHECKED	
NO.	

8/17/2012

94+850 94+900 94+950 95+000

ROADWAY PLAN & PROFILE, FAP 729 (US136) STA 94+850 TO STA 95+025