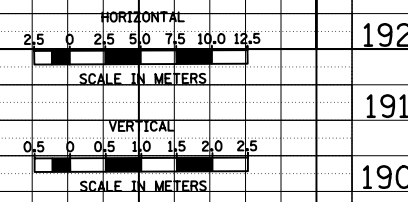
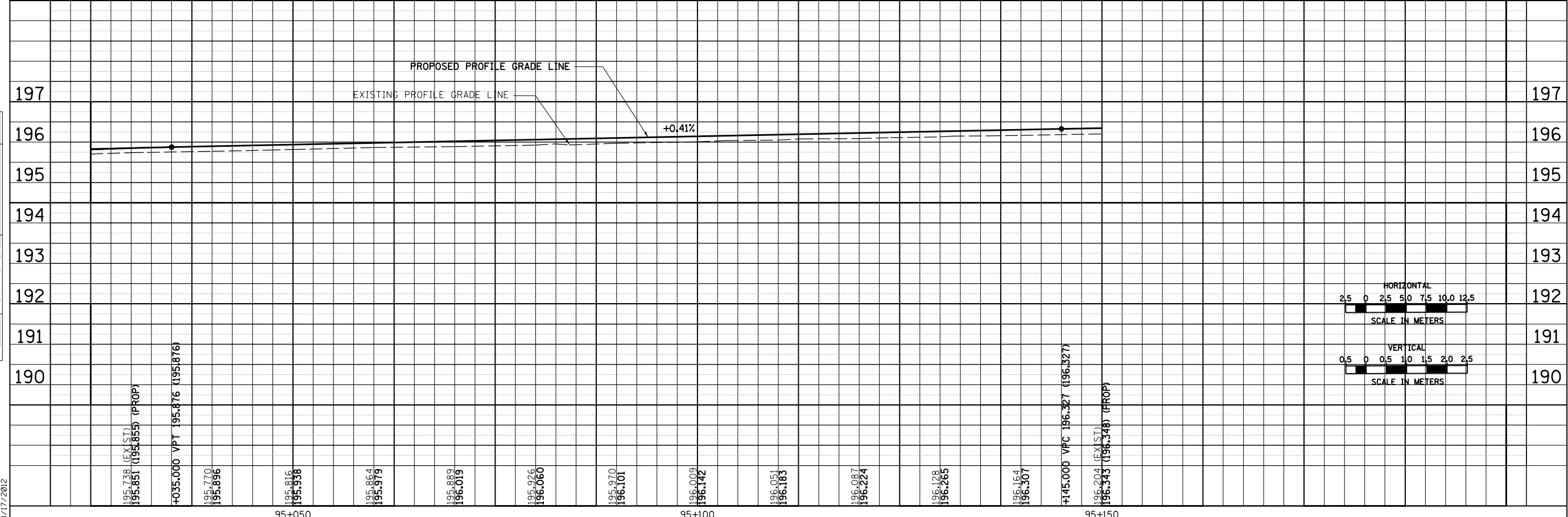
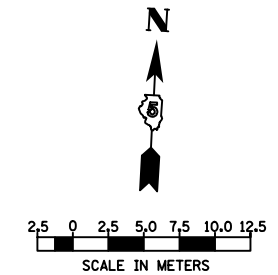
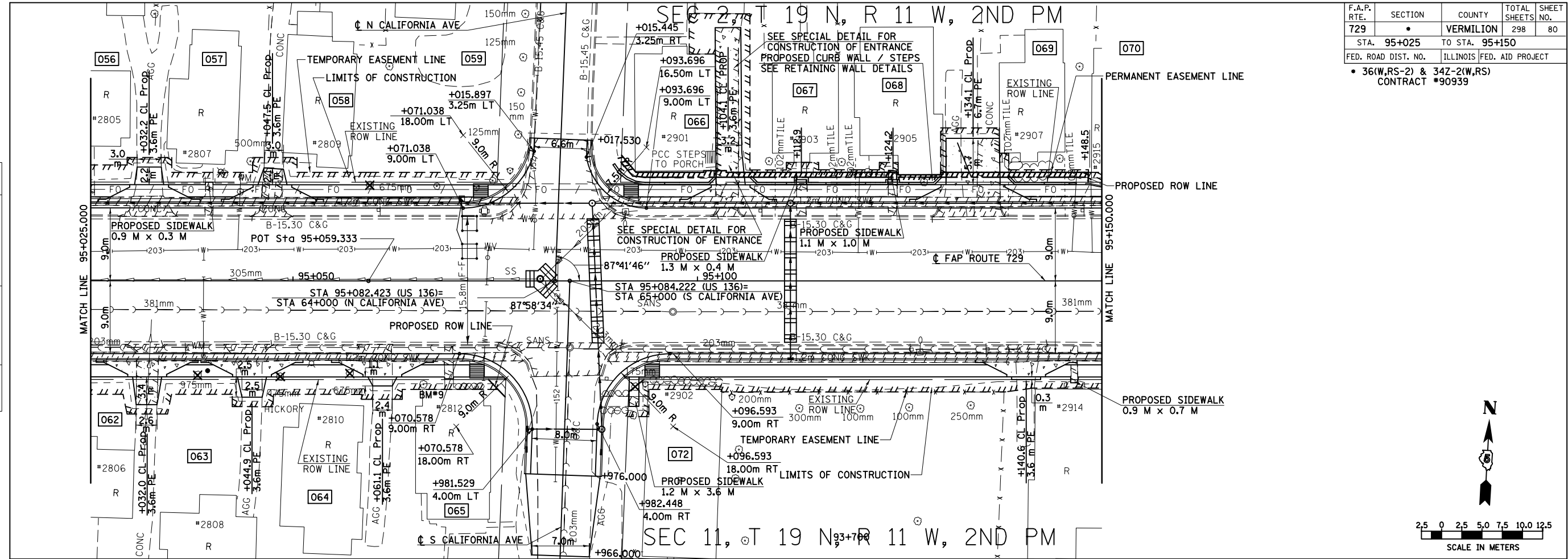


F.A.P. RTE.	SECTION	COUNTY	TOTAL SHEETS	SHEET NO.
729		VERMILION	298	80
STA. 95+025		TO STA. 95+150		
FED. ROAD DIST. NO.		ILLINOIS FED. AID PROJECT		
• 36(W,RS-2) & 34Z-2(W,RS) CONTRACT #90939				

BY	DATE
FINAL SURVEYED	
SURVEY PLOTTED	
NOTE BOOK TEMPLATE	
AREAS CHECKED	
NO.	

BY	DATE
ORIGINAL SURVEYED	
SURVEY PLOTTED	
NOTE BOOK TEMPLATE	
AREAS CHECKED	
NO.	



8/17/2012

c:\pw_work\pwwdot\cearlock\j\d0313241\20003p008.dgn

ROADWAY PLAN & PROFILE, FAP 729 (US136) STA 95+025 TO STA 95+150