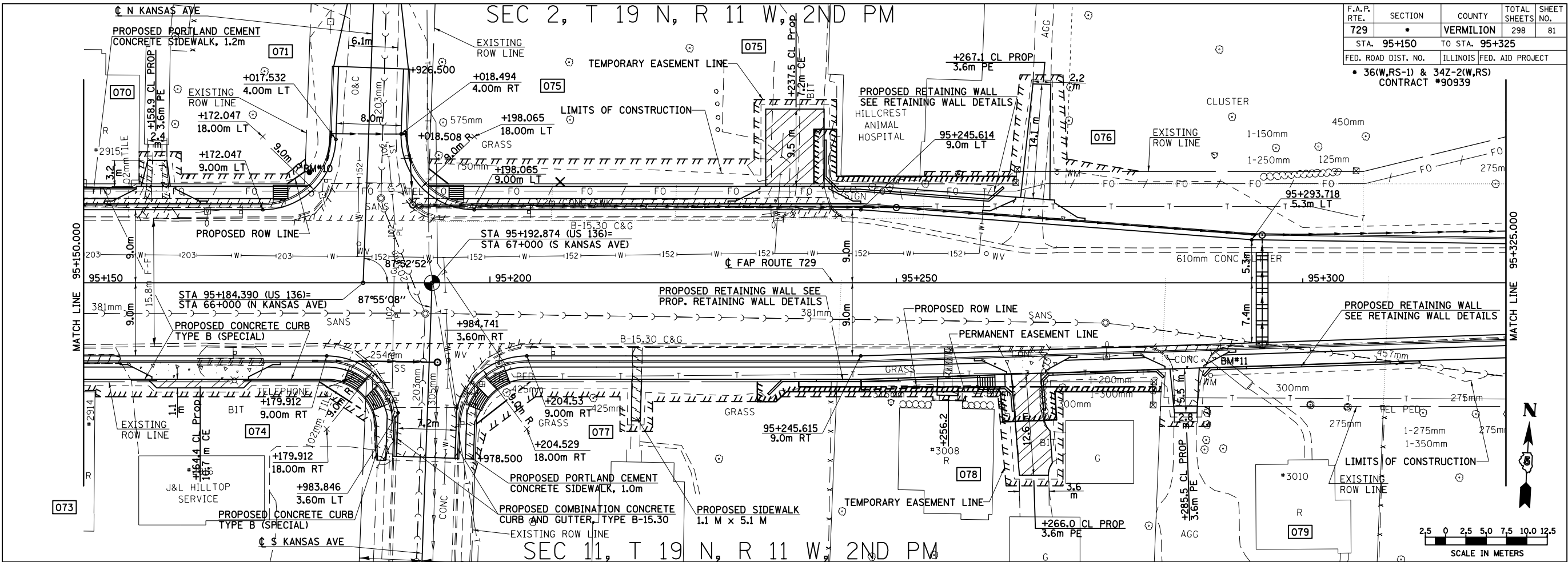


SEC 2, T 19 N, R 11 W, 2ND PM

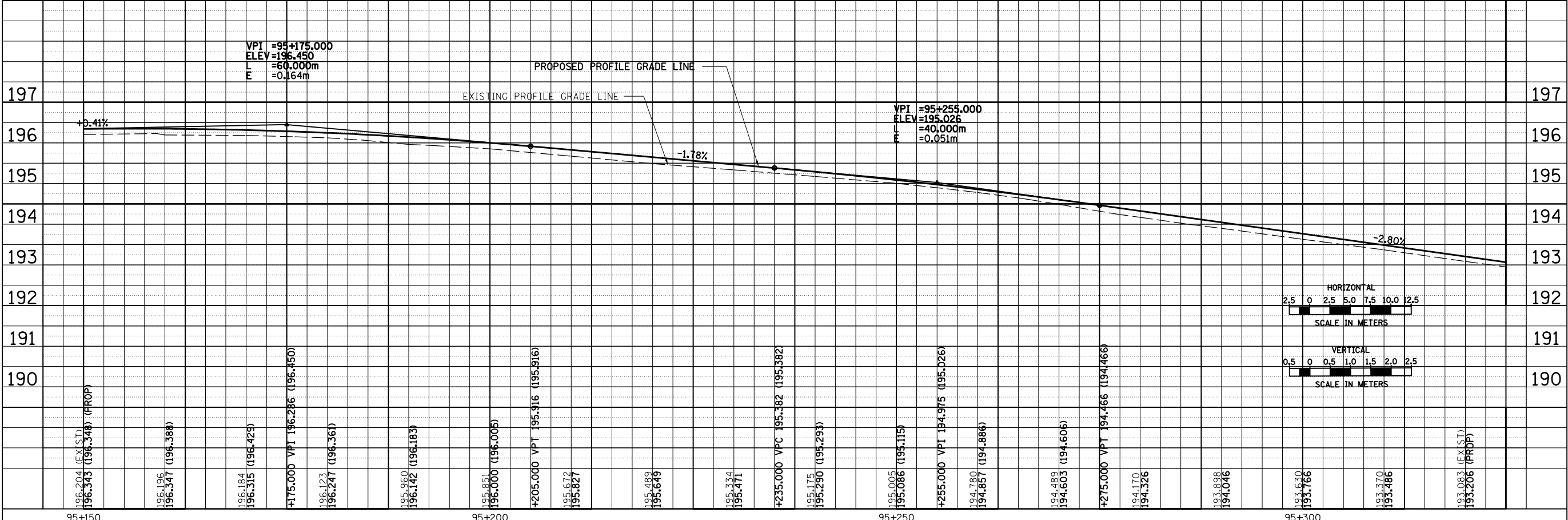
F.A.P. RTE.	SECTION	COUNTY	TOTAL SHEETS	SHEET NO.
729		VERMILION	298	81
STA. 95+150		TO STA. 95+325		
FED. ROAD DIST. NO.		ILLINOIS FED. AID PROJECT		
• 36(W,RS-1) & 34Z-2(W,RS) CONTRACT #90939				

FINAL SURVEYED	DATE
SURVEY PLOTTED	
NOTE BOOK TEMPLATE	
AREAS CHECKED	
NO.	



SEC 11, T 19 N, R 11 W, 2ND PM

ORIGINAL SURVEYED	DATE
SURVEY PLOTTED	
NOTE BOOK TEMPLATE	
AREAS CHECKED	
NO.	



8/17/2012

95+150 95+200 95+250 95+300

ROADWAY PLAN & PROFILE, FAP 729 (US136) STA 95+150 TO STA 95+325