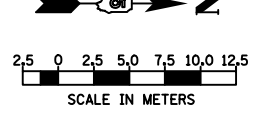


SEC 3, T 19 N, R 11 W, 2ND PM

F.A.P. RTE.	SECTION	COUNTY	TOTAL SHEETS	SHEET NO.
729	.	VERMILION	298	83

FED. ROAD DIST. NO. ILLINOIS FED. AID PROJECT
 • 36(W,RS-1) & 34Z-2(W,RS)
 CONTRACT #90939

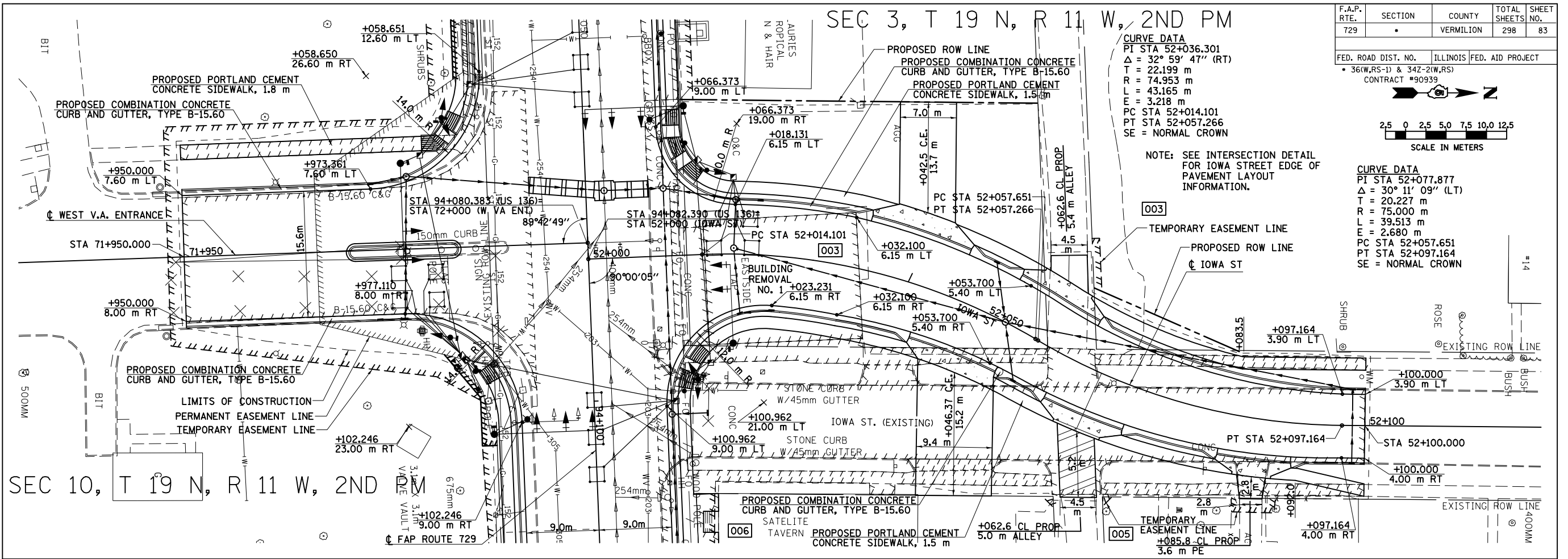


CURVE DATA
 PI STA 52+036.301
 $\Delta = 32^\circ 59' 47''$ (RT)
 T = 22.199 m
 R = 74.953 m
 L = 43.165 m
 E = 3.218 m
 PC STA 52+014.101
 PT STA 52+057.266
 SE = NORMAL CROWN

CURVE DATA
 PI STA 52+077.877
 $\Delta = 30^\circ 11' 09''$ (LT)
 T = 20.227 m
 R = 75.000 m
 L = 39.513 m
 E = 2.680 m
 PC STA 52+057.651
 PT STA 52+097.164
 SE = NORMAL CROWN

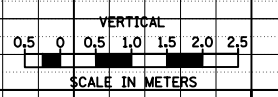
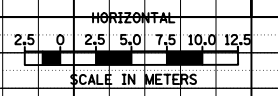
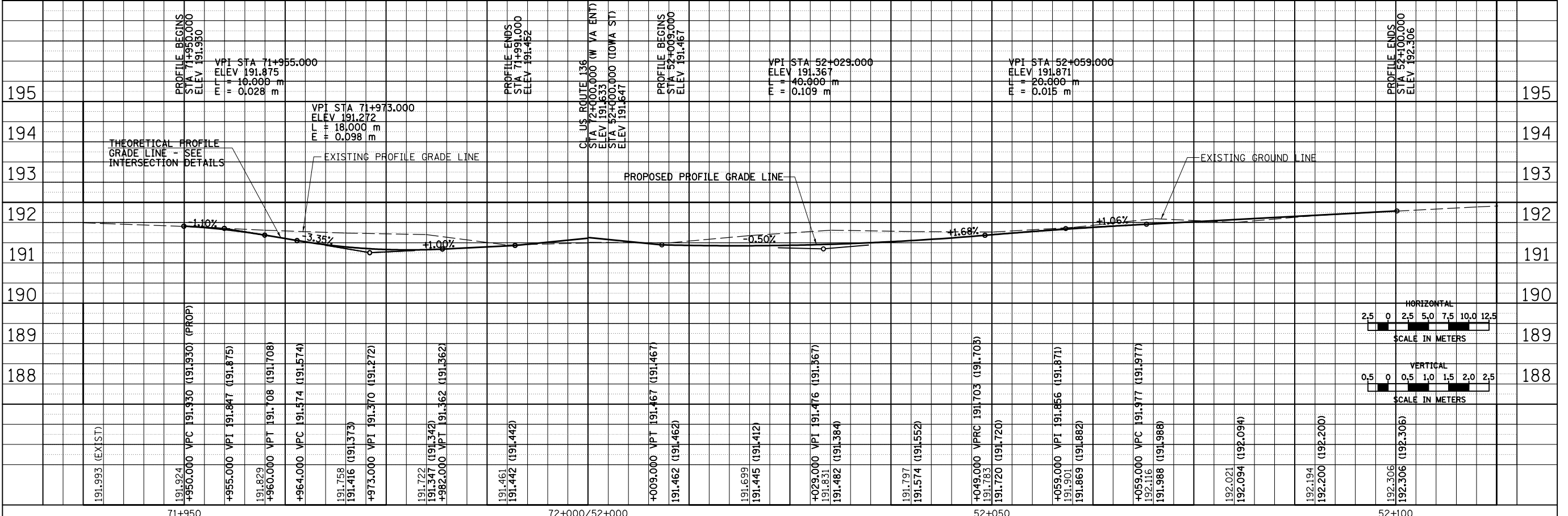
NOTE: SEE INTERSECTION DETAIL FOR IOWA STREET EDGE OF PAVEMENT LAYOUT INFORMATION.

BY	DATE



SEC 10, T 19 N, R 11 W, 2ND PM

BY	DATE



8/17/2012

71+950

72+000/52+000

52+050

52+100

ROADWAY PLAN & PROFILE, W V.A. ENTRANCE & IOWA ST