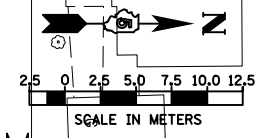
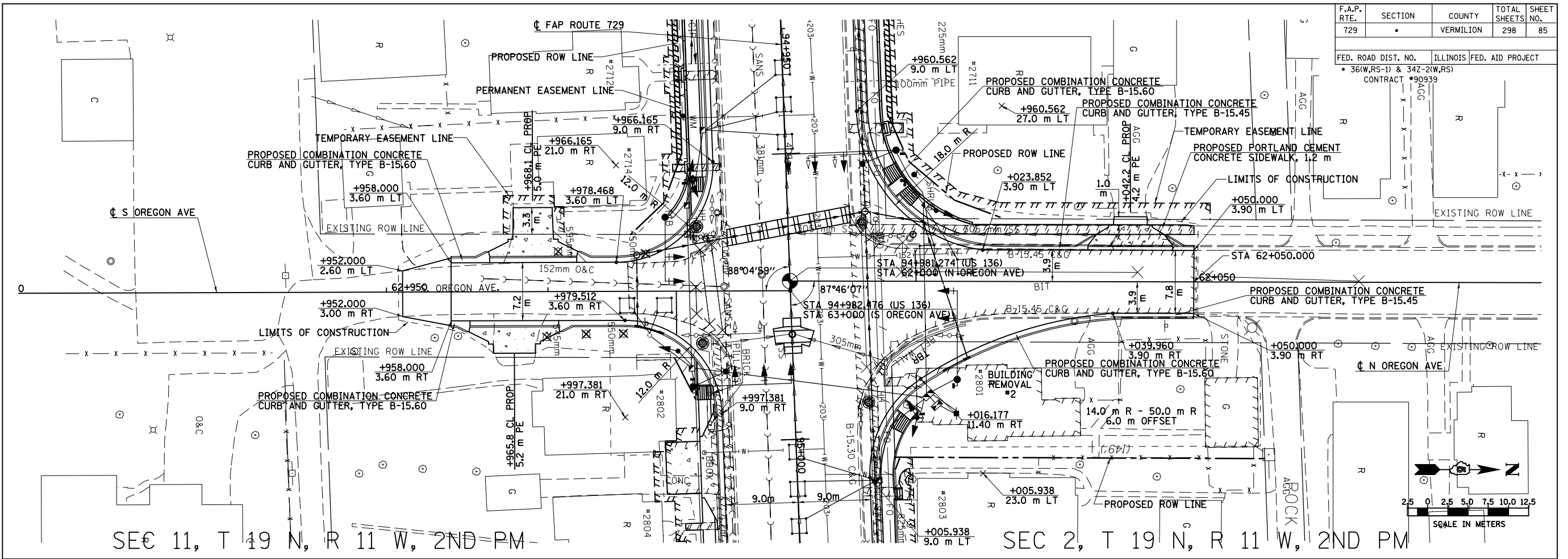
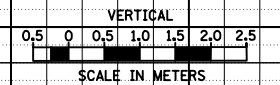
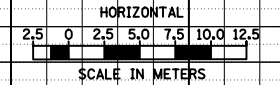
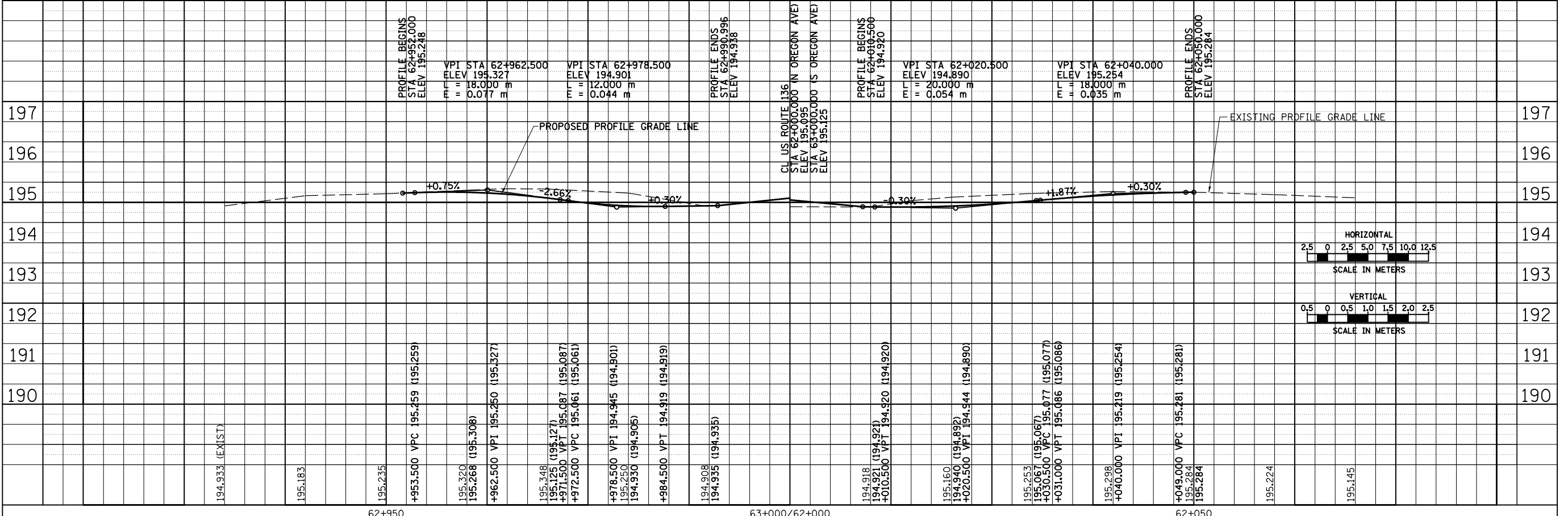


F.A.P. RTE. 729	SECTION .	COUNTY VERMILION	TOTAL SHEETS 298	SHEET NO. 85
FED. ROAD DIST. NO. 36(W,RS-1) & 34Z-2(W,RS)		ILLINOIS FED. AID PROJECT CONTRACT #90939		

FINAL SURVEYED	DATE
SURVEY PLOTTED	
NOTE BOOK TEMPLATE	
AREAS CHECKED	
NO.	



ORIGINAL SURVEYED	DATE
SURVEY PLOTTED	
NOTE BOOK TEMPLATE	
AREAS CHECKED	
NO.	



8/17/2012

c:\pw_work\p\wdot\cearlock_jd\0313241\20003p012.dgn

ROADWAY PLAN & PROFILE, S OREGON AVE AND N OREGON AVE