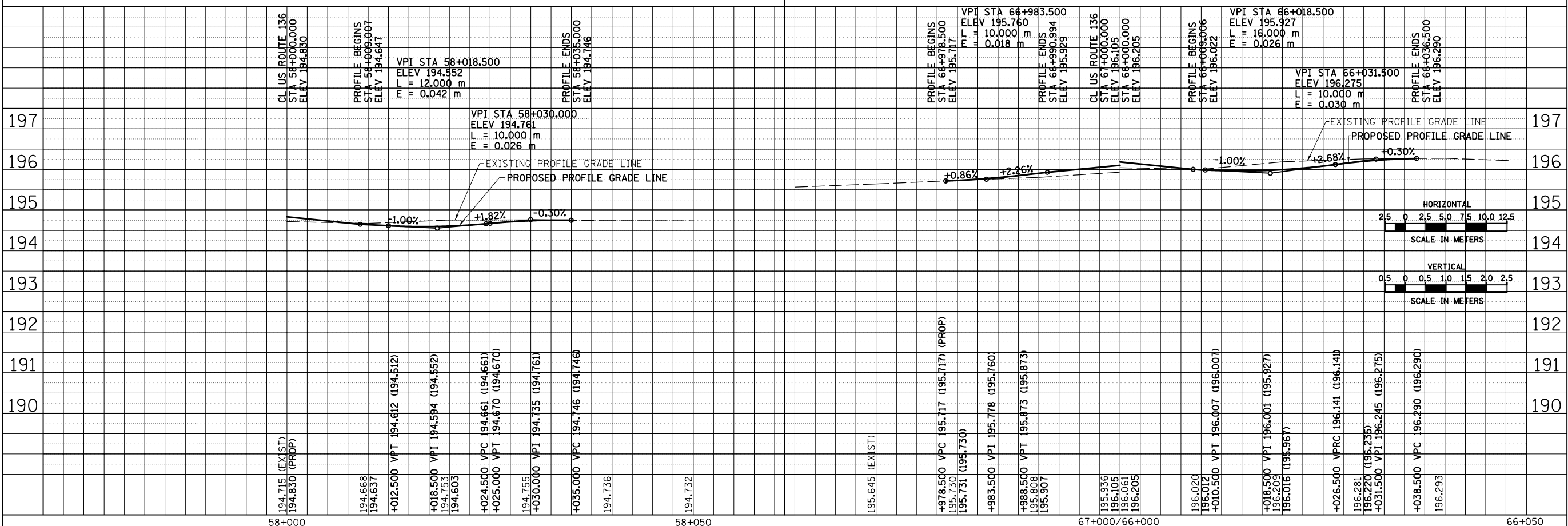
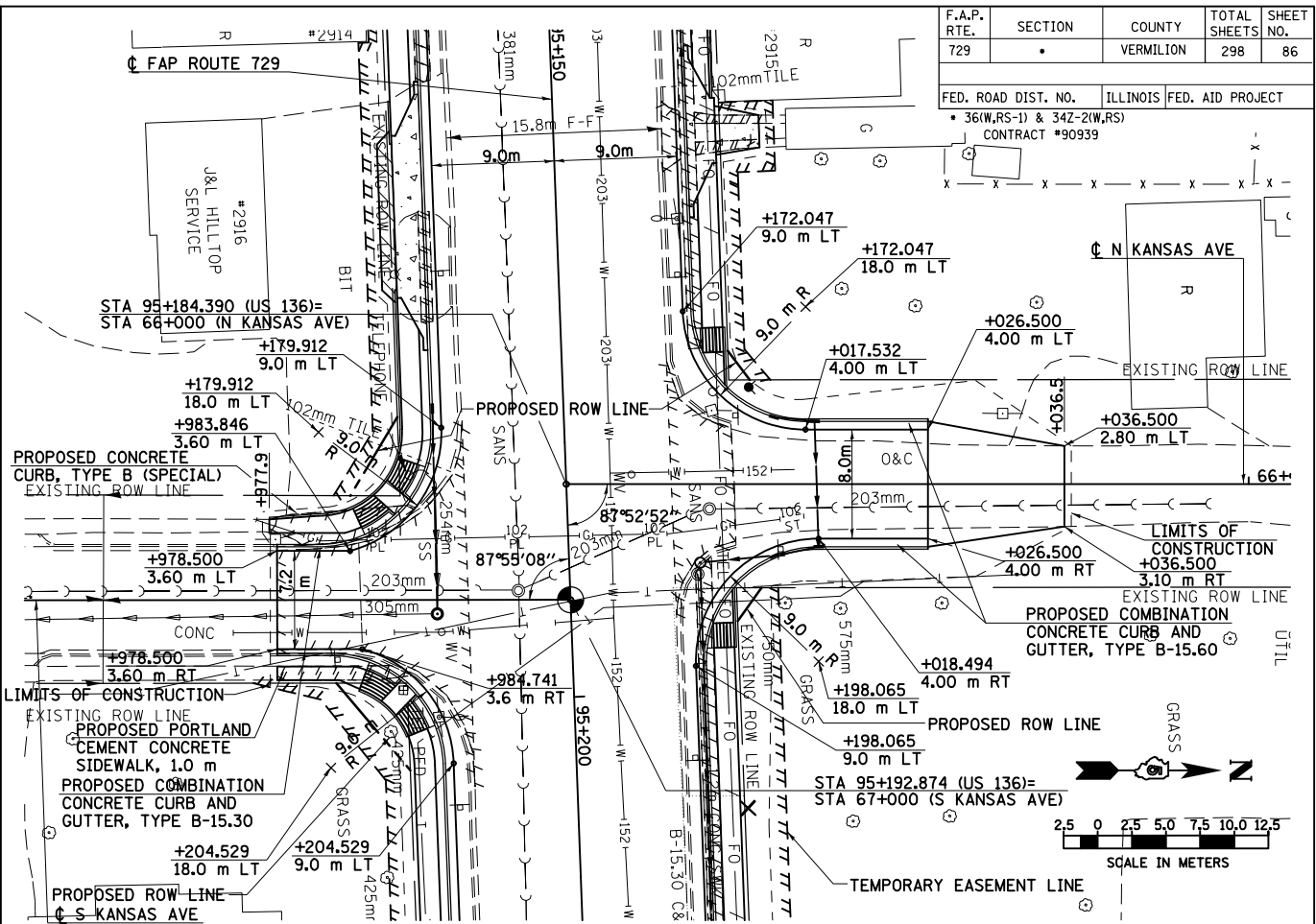
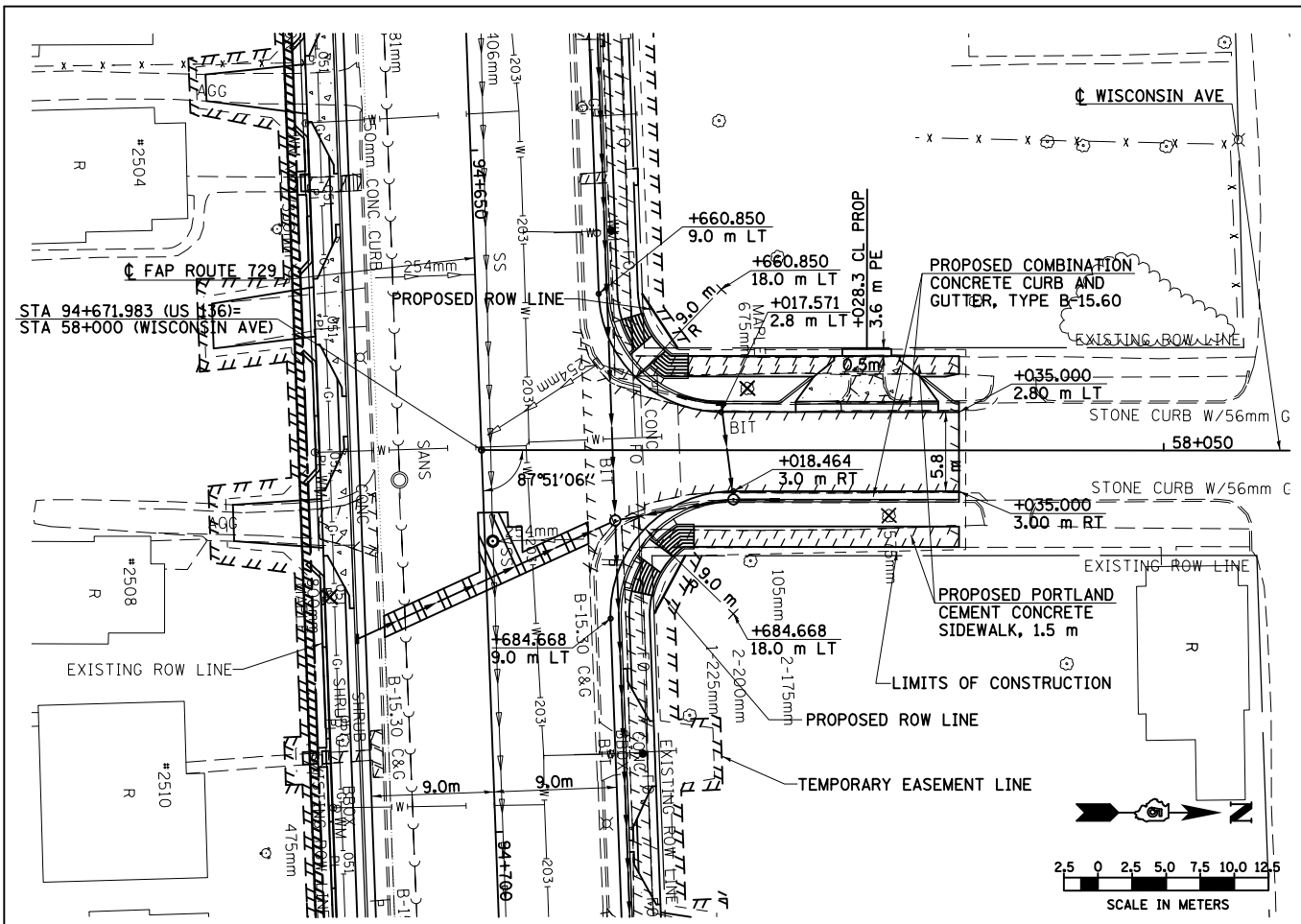


F.A.P. RTE.	SECTION	COUNTY	TOTAL SHEETS	SHEET NO.
729		VERMILION	298	86
FED. ROAD DIST. NO.		ILLINOIS FED. AID PROJECT		
		• 36(W,RS-1) & 34Z-2(W,RS)		
		CONTRACT #90939		

FINAL SURVEYED	DATE
SURVEY PLOTTED	
NOTE BOOK TEMPLATE	
AREAS CHECKED	
NO.	

ORIGINAL SURVEYED	DATE
SURVEY PLOTTED	
NOTE BOOK TEMPLATE	
AREAS CHECKED	
NO.	



8/17/2012

ci:\pw_work\p\dot\cear\lock\j\d0313241\20003p014.dgn

ROADWAY PLAN & PROFILE, WISCONSIN AVE AND KANSAS AVE