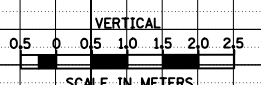
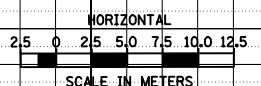
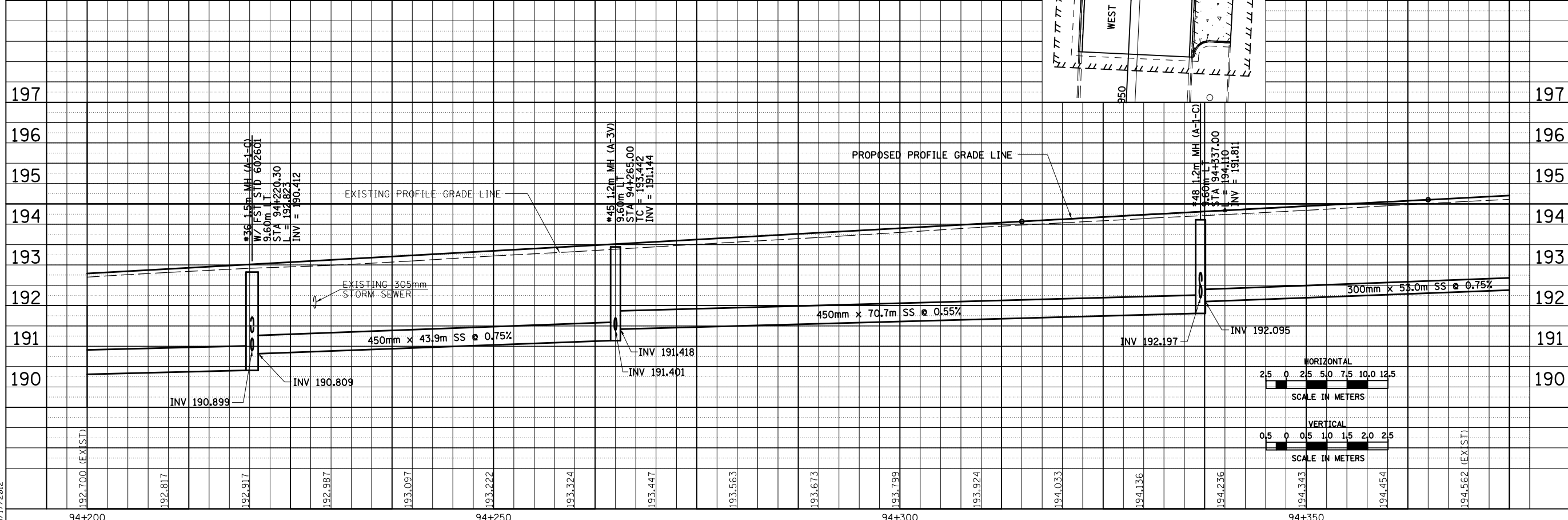


F.A.P. RTE.	SECTION	COUNTY	TOTAL SHEETS	SHEET NO.
729	•	VERMILION	298	89
STA. 94+200	TO STA. 94+375			
FED. ROAD DIST. NO.	ILLINOIS FED. AID PROJECT			
	• 36(W,RS-1) & 34Z-2(W,RS)			
	CONTRACT #90939			

FINAL SURVEY PLOTTED	DATE
SURVEY PLOTTED	
NOTE BOOK TEMPLATE	
AREAS CHECKED	
NO.	

ORIGINAL SURVEY PLOTTED	DATE
SURVEY PLOTTED	
NOTE BOOK TEMPLATE	
AREAS CHECKED	
NO.	

SEC 10, T 19 N, R 11 W, 2ND PM



8/17/2012

ci:\pw_work\p\dot\c\er\lock\j\d\0313241\20003d003.dgn

DRAINAGE AND UTILITY PLAN & PROFILE, FAP 729 (US136) STA 94+200 TO STA 94+375