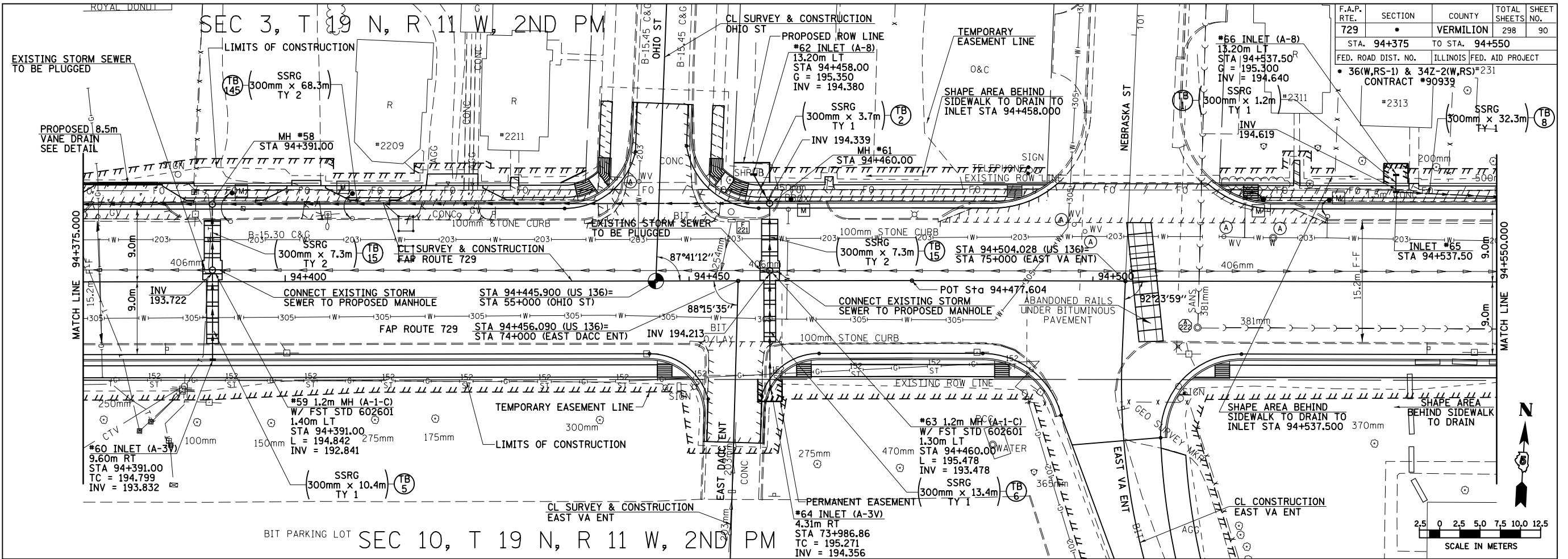
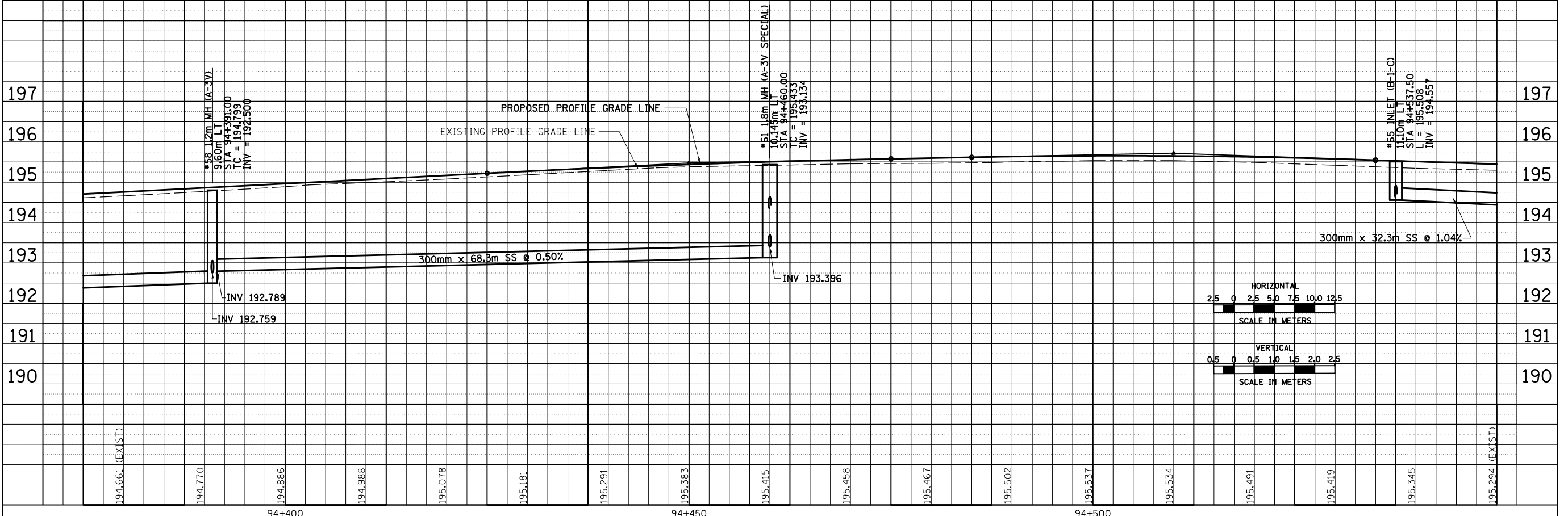


F.A.P. RTE.	SECTION	COUNTY	TOTAL SHEETS	SHEET NO.
729		VERMILION	298	90
STA. 94+375		TO STA. 94+550		
FED. ROAD DIST. NO.		ILLINOIS FED. AID PROJECT		
		• 36(W.RS-1) & 342-2(W.RS) #231		
		CONTRACT #90939		

FINAL SURVEY PLOTTED	BY	DATE
NOTE BOOK TEMPLATE		
AREAS CHECKED		
NO.		



ORIGINAL SURVEY PLOTTED	BY	DATE
NOTE BOOK TEMPLATE		
AREAS CHECKED		
NO.		



8/17/2012

c:\pw_work\p\dot\cear\lock\j\d\0313241\20003d004.dgn

DRAINAGE AND UTILITY PLAN & PROFILE, FAP 729 (US136) STA 94+375 TO STA 94+550