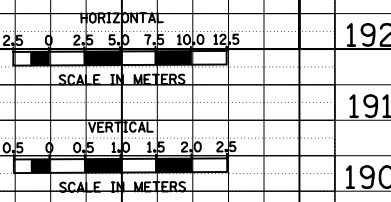
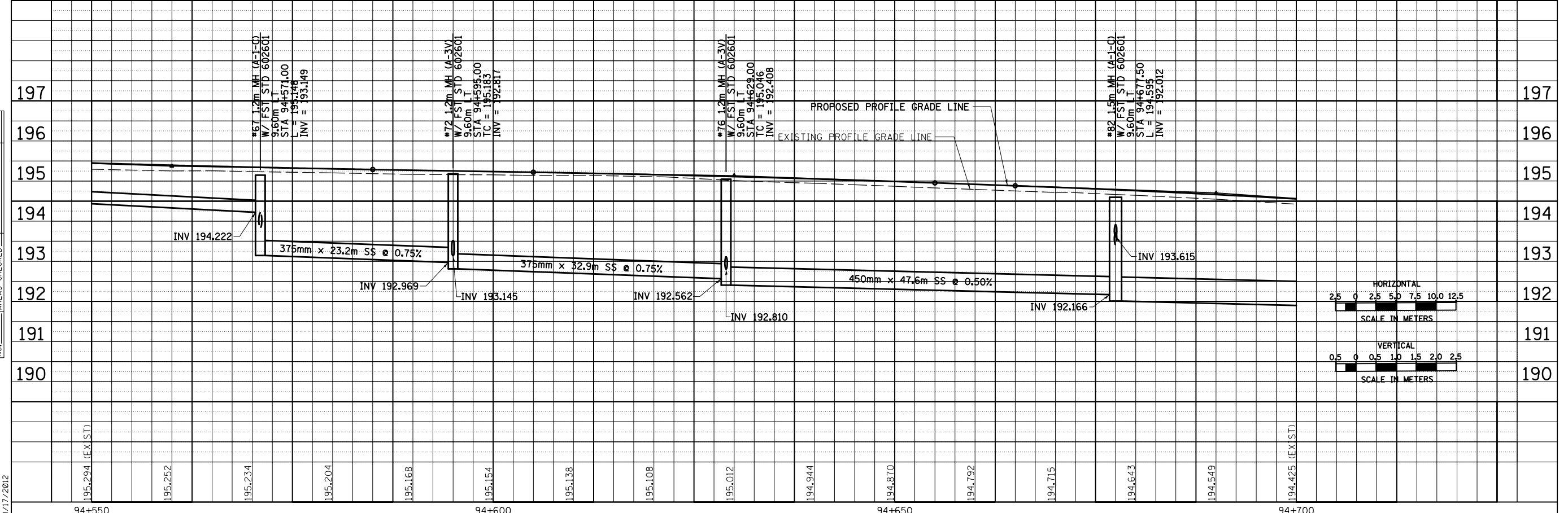
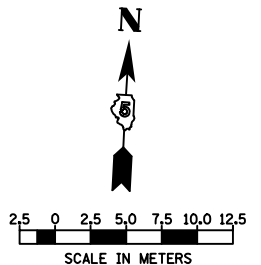
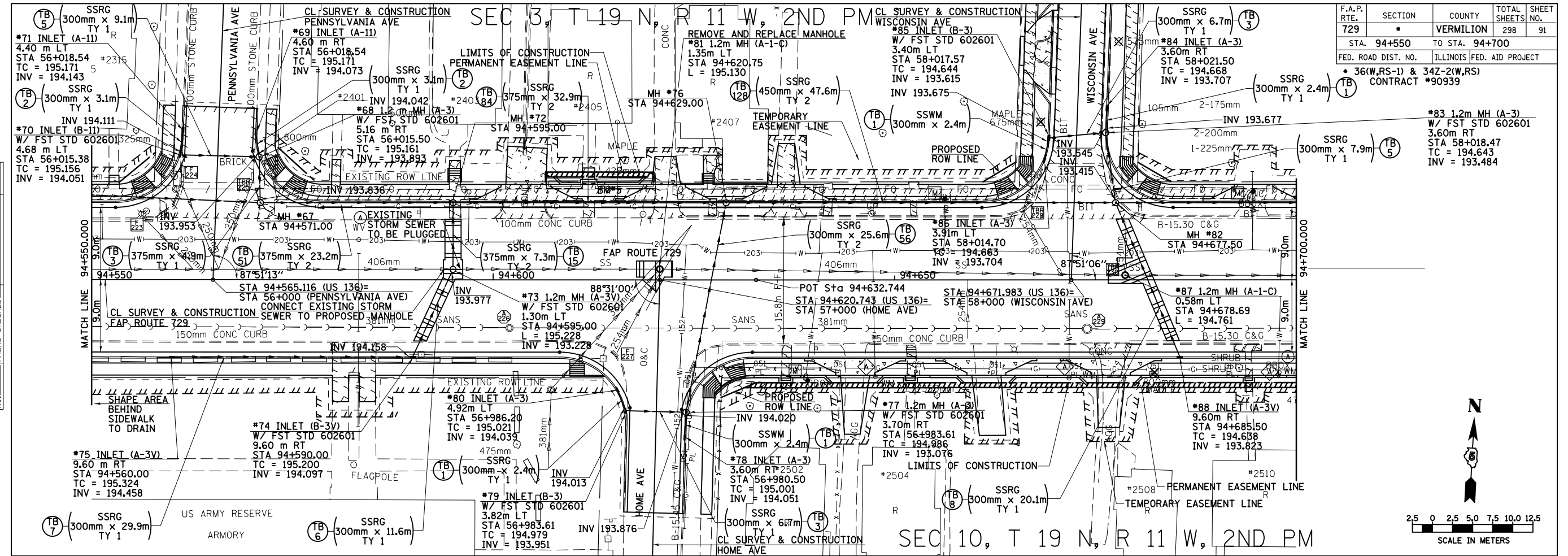


F.A.P. RTE.	SECTION	COUNTY	TOTAL SHEETS	SHEET NO.
729		VERMILION	298	91
STA. 94+550		TO STA. 94+700		
FED. ROAD DIST. NO.		ILLINOIS FED. AID PROJECT		
		• 36(W,RS-1) & 342-2(W,RS)		
		CONTRACT #90939		

FINAL SURVEY PLOTTED	DATE
NOTE BOOK TEMPLATE	
AREAS CHECKED	
NO.	

ORIGINAL SURVEY PLOTTED	DATE
NOTE BOOK TEMPLATE	
AREAS CHECKED	
NO.	



8/17/2012

94+550 94+600 94+650 94+700

c:\pw_work\pwork\c\earlock\j\d0313241\20003d005.dgn

DRAINAGE AND UTILITY PLAN & PROFILE, FAP 729 (US136) STA 94+550 TO STA 94+700