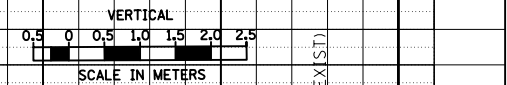
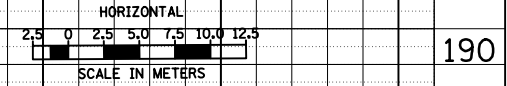
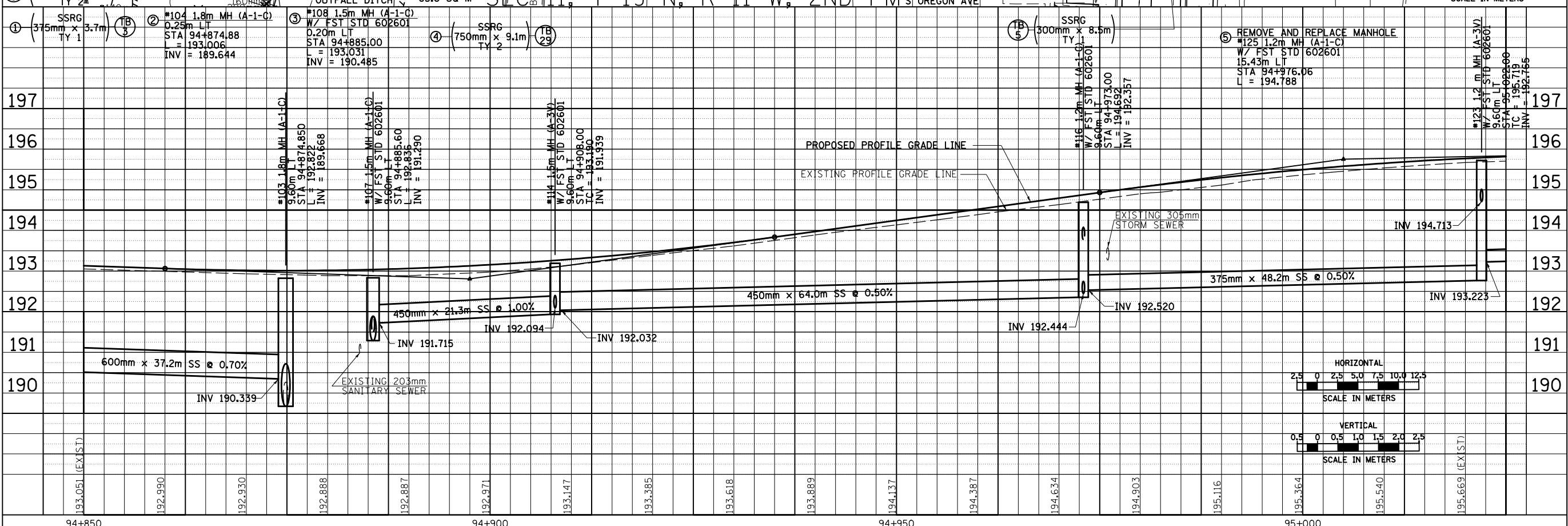


F.A.P. R.T.E.	SECTION	COUNTY	TOTAL SHEETS	SHEET NO.
729	*	VERMILION	298	93
STA. 94+850 TO STA. 95+025		ILLINOIS FED. AID PROJECT		
FED. ROAD DIST. NO.		CONTRACT #90939		
* 36(W,RS-1) & 34Z-2(W,RS)		R-SSRG (300mm x 2.4m) TY 1		

FINAL SURVEY PLOTTED	DATE
SURVEY PLOTTED	
NOTE BOOK TEMPLATE	
AREAS CHECKED	
BY	

ORIGINAL SURVEY PLOTTED	DATE
SURVEY PLOTTED	
NOTE BOOK TEMPLATE	
AREAS CHECKED	
BY	



8/17/2012

94+850 94+900 94+950 95+000

DRAINAGE AND UTILITY PLAN & PROFILE, FAP 729 (US136) STA 94+850 TO STA 95+025