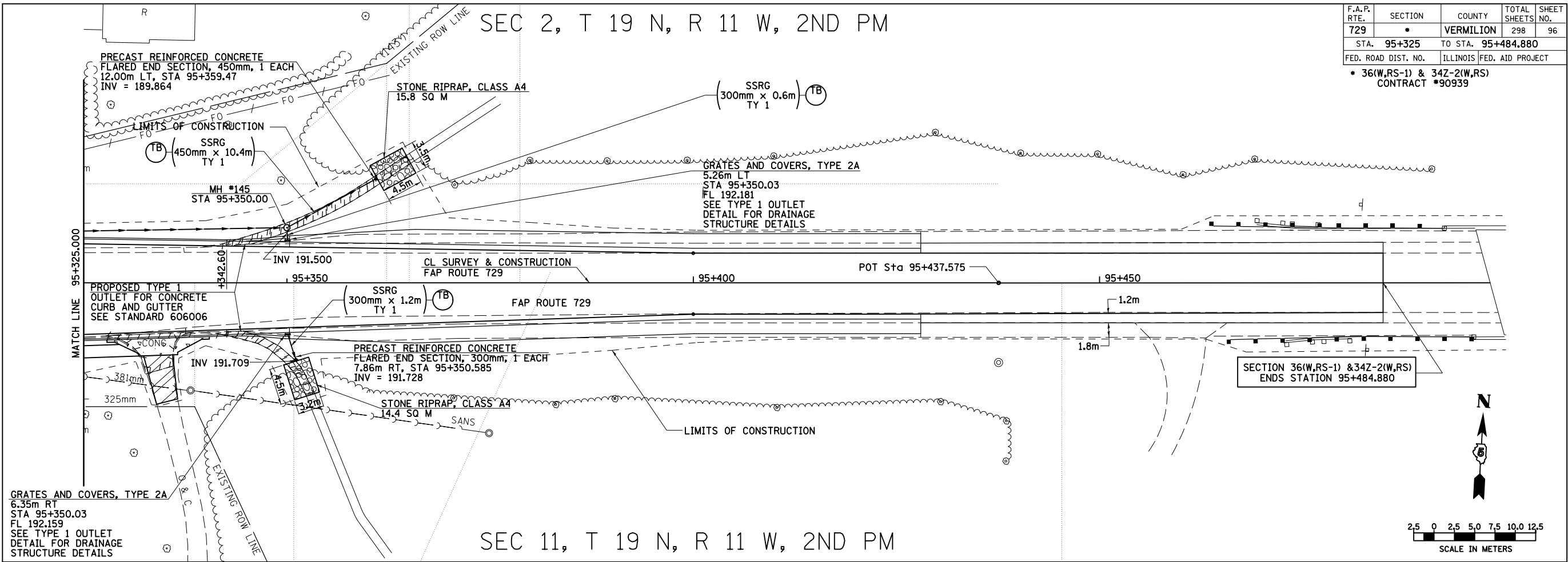


SEC 2, T 19 N, R 11 W, 2ND PM

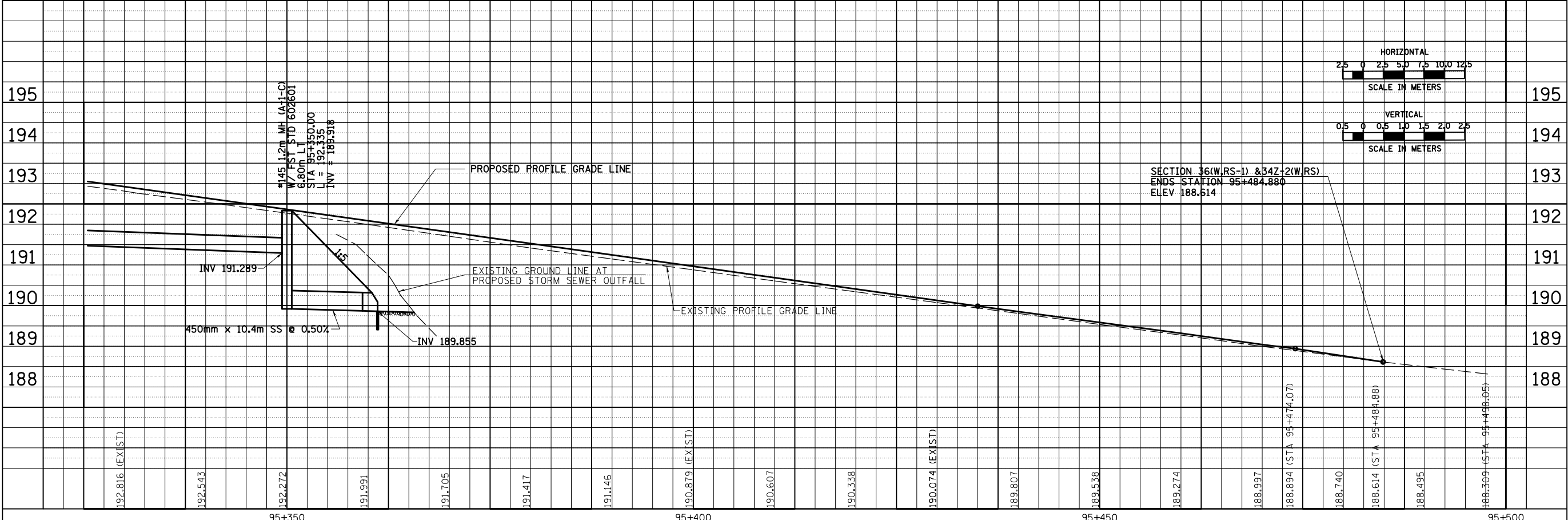
F.A.P. RTE.	SECTION	COUNTY	TOTAL SHEETS	SHEET NO.
729	*	VERMILION	298	96
STA. 95+325		TO STA. 95+484.880		
FED. ROAD DIST. NO.		ILLINOIS FED. AID PROJECT		
• 36(W,RS-1) & 34Z-2(W,RS) CONTRACT #90939				

FINAL SURVEYED	DATE
SURVEY PLOTTED	
NOTE BOOK TEMPLATE	
AREAS CHECKED	
NO.	



SEC 11, T 19 N, R 11 W, 2ND PM

ORIGINAL SURVEYED	DATE
SURVEY PLOTTED	
NOTE BOOK TEMPLATE	
AREAS CHECKED	
NO.	



8/17/2012

c:\pw_work\pwwork\cearlock\j\d0313241\20003d010.dgn

DRAINAGE AND UTILITY PLAN & PROFILE, FAP 729 (US136) STA 95+325 TO STA 95+484.880