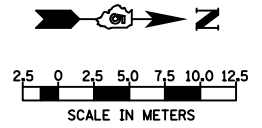
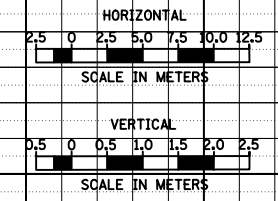
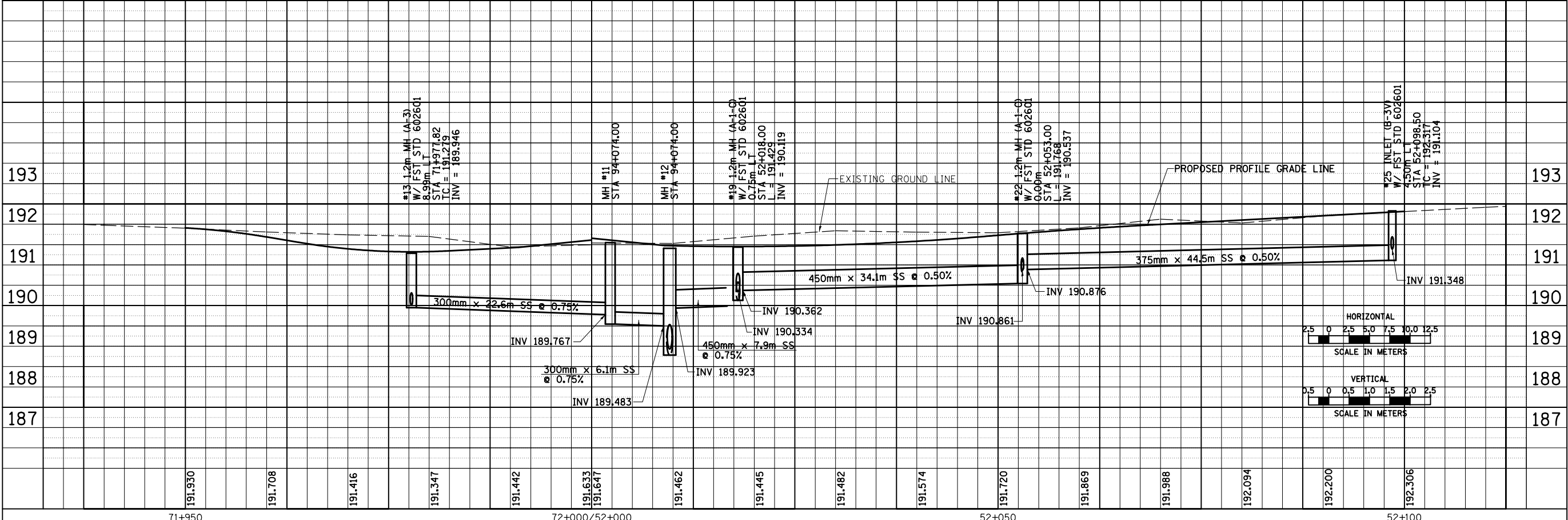
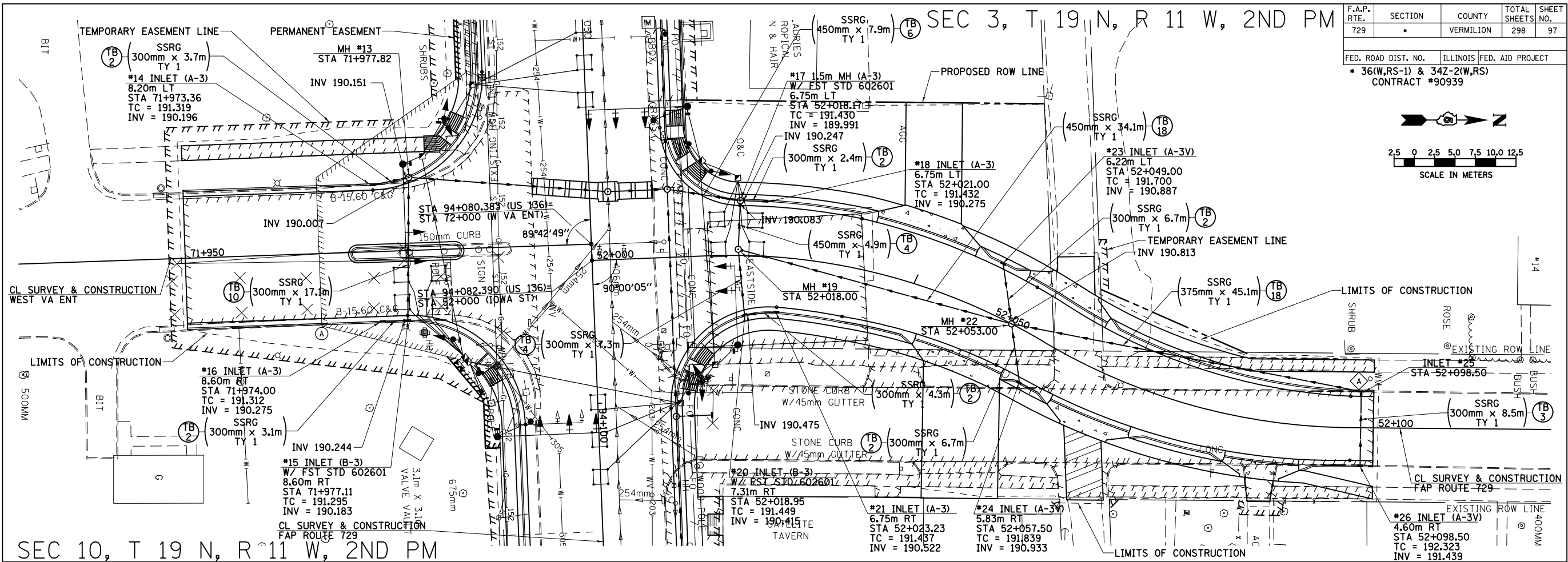


F.A.P. RTE. 729	SECTION .	COUNTY VERMILION	TOTAL SHEETS 298	SHEET NO. 97
FED. ROAD DIST. NO.		ILLINOIS FED. AID PROJECT		
• 36(W,RS-1) & 342-(W,RS) CONTRACT #90939				



BY	DATE
FINAL SURVEYED	
SURVEY PLOTTED	
NOTE BOOK TEMPLATE	
AREAS CHECKED	
NO.	



BY	DATE
ORIGINAL SURVEYED	
SURVEY PLOTTED	
NOTE BOOK TEMPLATE	
AREAS CHECKED	
NO.	

8/17/2012

71+950 191.950 191.708 191.416 191.347 191.442 191.633 191.647 191.462 191.445 191.482 191.574 191.720 191.869 191.988 192.094 192.200 192.306 52+100

DRAINAGE AND UTILITY PLAN & PROFILE, W V.A. ENTRANCE & IOWA ST

c:\pwwork\pwwork\cearlock\j\d0313241\20003d011.dgn