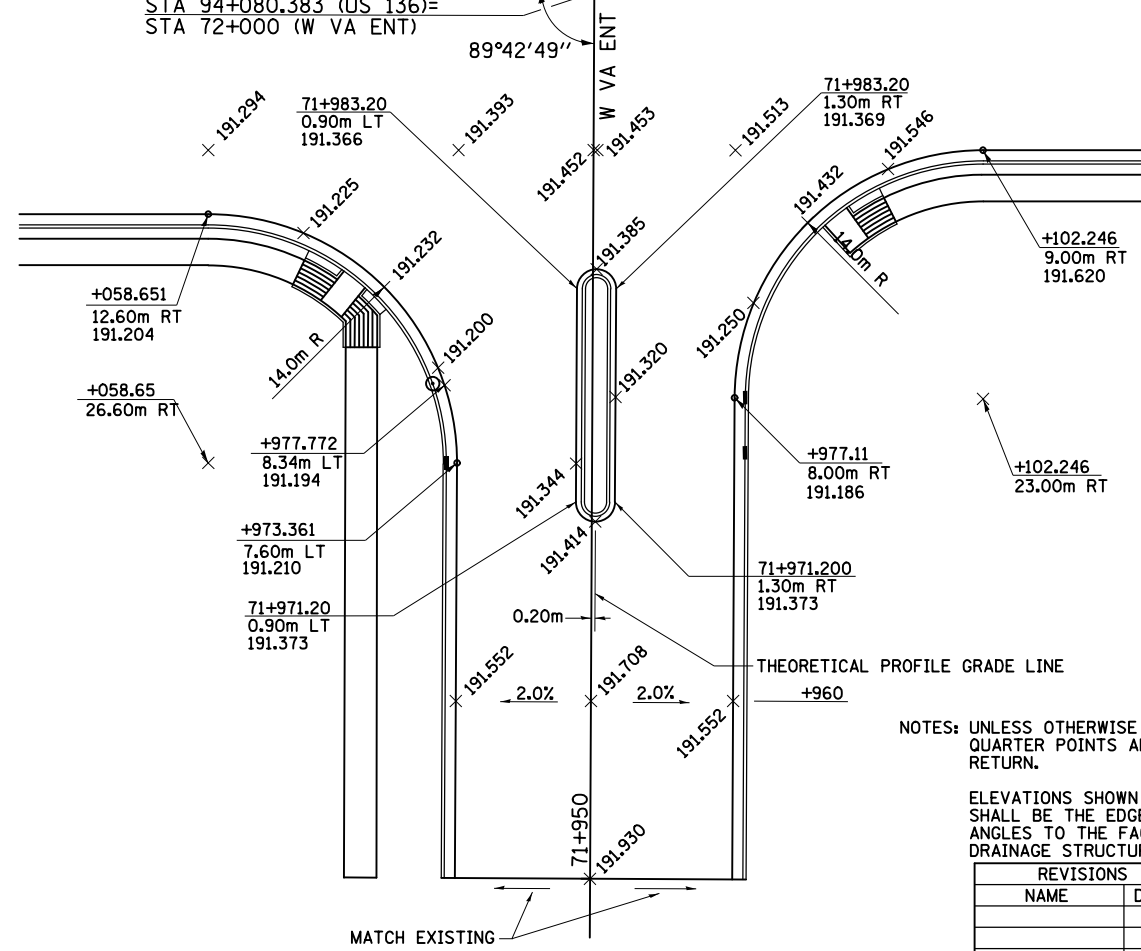
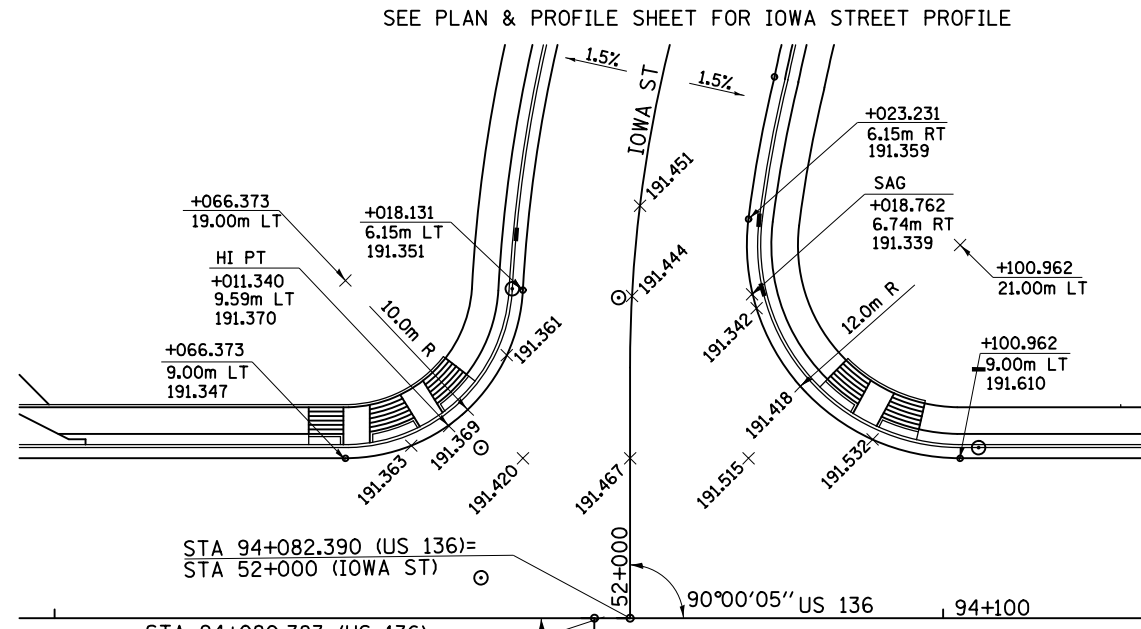
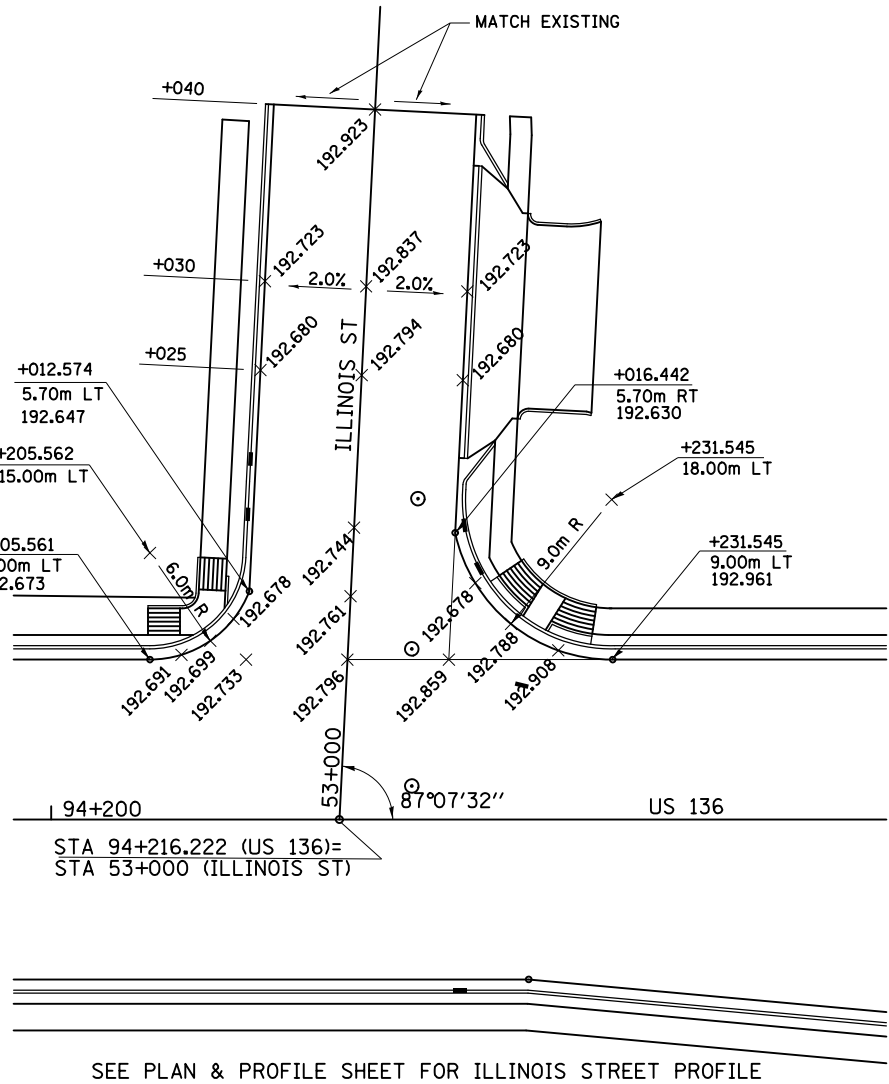
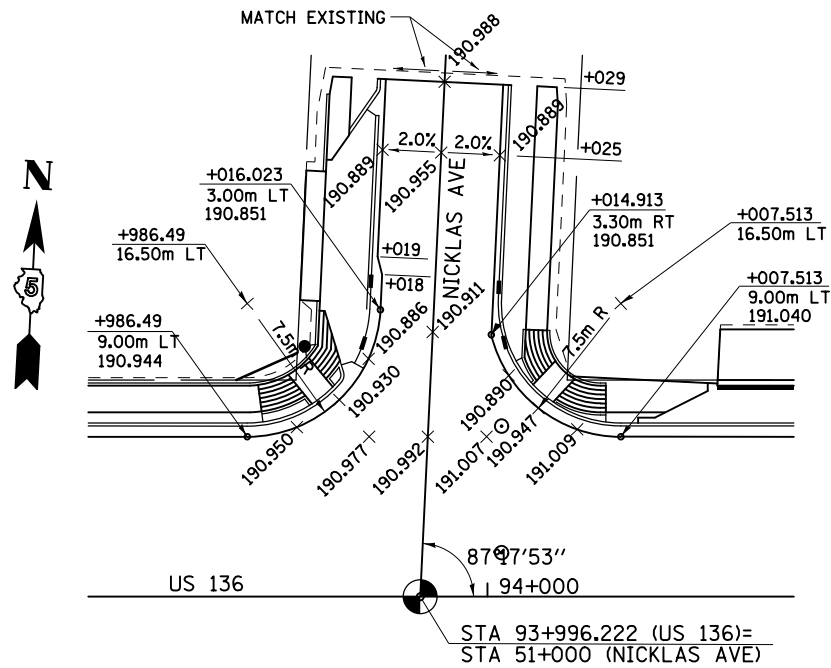
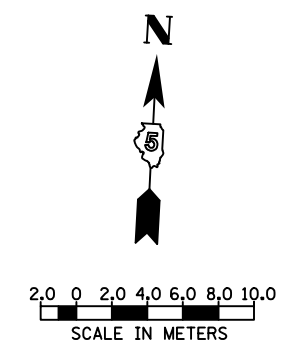


F.A.P. RTE.	SECTION	COUNTY	TOTAL SHEETS	SHEET NO.
729	*	VERMILION	298	104
FED. ROAD DIST. NO.		ILLINOIS FED. AID PROJECT		
• 36(W,RS-1) & 34Z-2(W,RS) CONTRACT #90939				



IOWA STREET EDGE OF PAVEMENT DATA

STATION	OFFSET LEFT	ELEVATION LEFT	OFFSET RIGHT	ELEVATION RIGHT
52+021	6.15	191.354		
52+024	6.15	191.361	6.15	191.361
52+027	6.15	191.373	6.15	191.373
52+030	6.15	191.390	6.15	191.390
52+033	6.12	191.412	6.12	191.412
52+036	6.03	191.441	6.01	191.441
52+039	5.93	191.473	5.90	191.474
52+042	5.84	191.511	5.79	191.512
52+045	5.74	191.554	5.69	191.555
52+048	5.65	191.601	5.58	191.602
52+051	5.55	191.653	5.47	191.654
52+054	5.46	191.701	5.36	191.703
52+057	5.36	191.747	5.25	191.748
52+060	5.26	191.790	5.15	191.792
52+063	5.15	191.831	5.06	191.832
52+066	5.04	191.868	4.97	191.869
52+069	4.92	191.903	4.88	191.904
52+072	4.81	191.937	4.79	191.937
52+075	4.70	191.971	4.70	191.971
52+078	4.59	192.004	4.61	192.004
52+081	4.47	192.037	4.51	192.036
52+084	4.36	192.071	4.42	192.070
52+087	4.25	192.104	4.33	192.103
52+090	4.14	192.138	4.24	192.136
52+093	4.03	192.172	4.14	192.170
52+096	3.93	192.205	4.05	192.203
52+099	3.90	192.237	4.00	192.235



NOTES: UNLESS OTHERWISE NOTED, ELEVATIONS ARE LOCATED AT QUARTER POINTS AND/OR HALF POINTS ALONG THE RADIUS RETURN.

ELEVATIONS SHOWN ADJACENT TO DRAINAGE STRUCTURES SHALL BE THE EDGE OF PAVEMENT ELEVATION AT RIGHT ANGLES TO THE FACE OF CURB AT THE CENTER OF THE DRAINAGE STRUCTURE.

REVISIONS	
NAME	DATE

ILLINOIS DEPARTMENT OF TRANSPORTATION
INTERSECTION DETAILS

DATE AUGUST 2003

DRAWN BY VCF
CHECKED BY AWM

8/17/2012