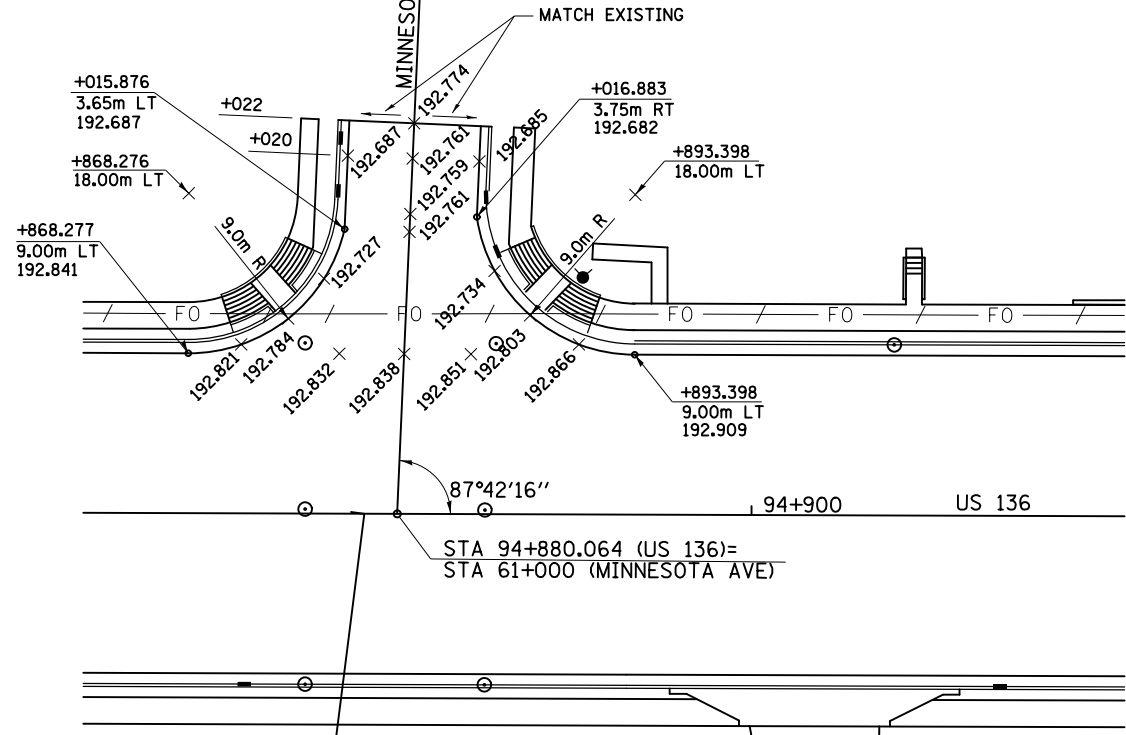
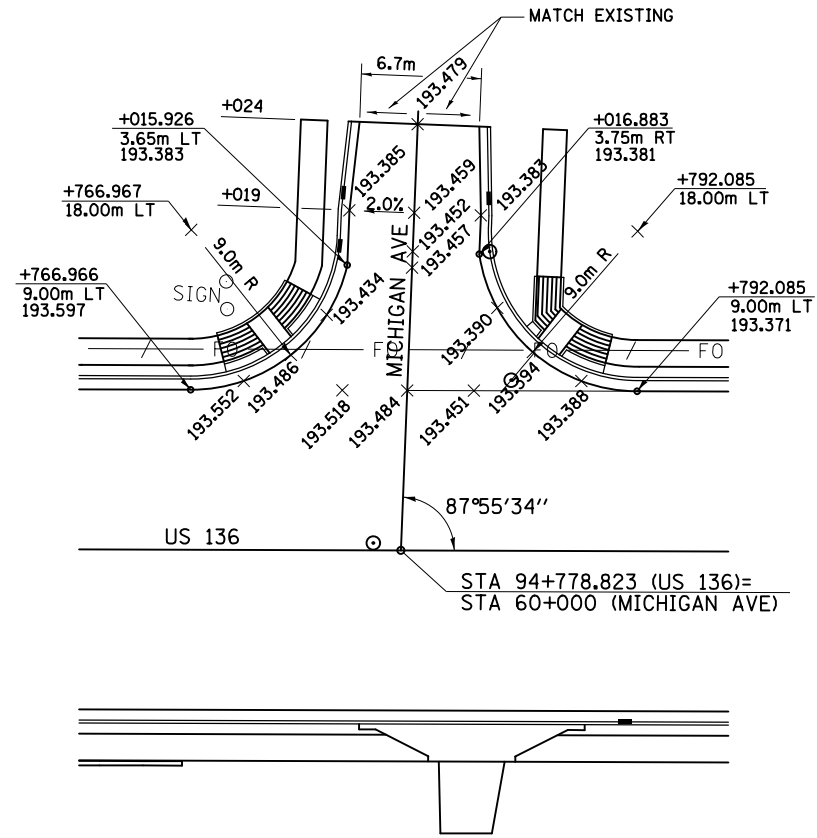
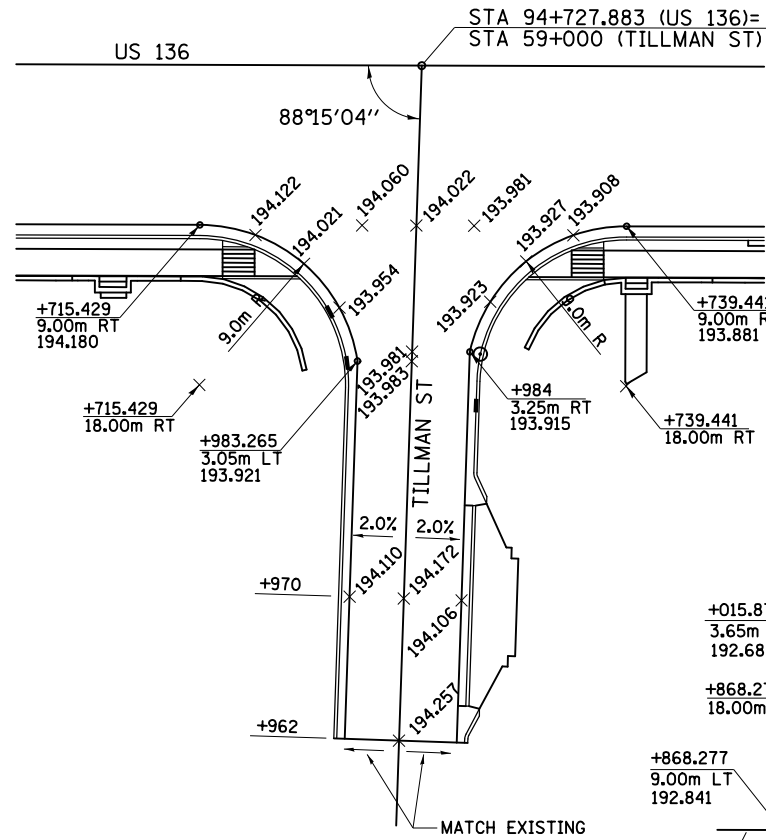
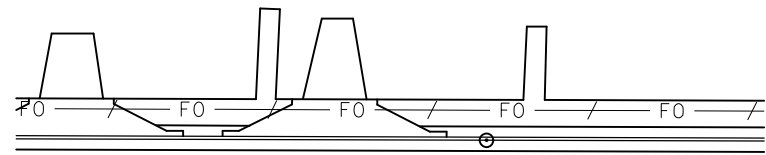
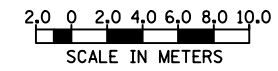


F.A.P. RTE.	SECTION	COUNTY	TOTAL SHEETS	SHEET NO.
729	*	VERMILION	298	107
FED. ROAD DIST. NO.		ILLINOIS FED. AID PROJECT		
* 36(W,RS-1) & 34Z-2(W,RS) CONTRACT #90939				



NOTES: UNLESS OTHERWISE NOTED, ELEVATIONS ARE LOCATED AT QUARTER POINTS AND/OR HALF POINTS ALONG THE RADIUS RETURN.
ELEVATIONS SHOWN ADJACENT TO DRAINAGE STRUCTURES SHALL BE THE EDGE OF PAVEMENT ELEVATION AT RIGHT ANGLES TO THE FACE OF CURB AT THE CENTER OF THE DRAINAGE STRUCTURE.



REVISIONS		ILLINOIS DEPARTMENT OF TRANSPORTATION INTERSECTION DETAILS
NAME	DATE	
		DRAWN BY VCF CHECKED BY AWM DATE AUGUST 2003

8/17/2012