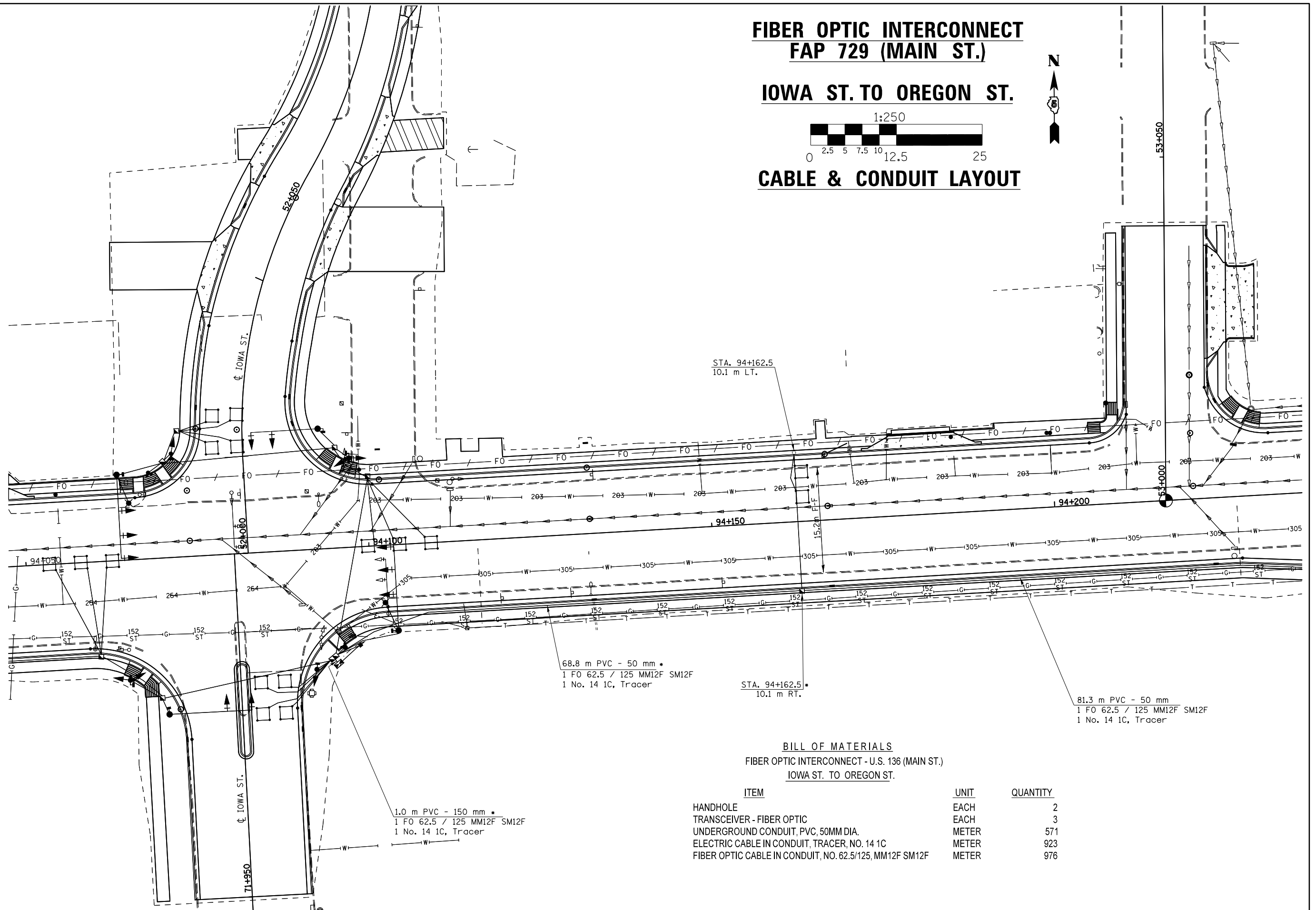


FIBER OPTIC INTERCONNECT FAP 729 (MAIN ST.)

IOWA ST. TO OREGON ST.



CABLE & CONDUIT LAYOUT



68.8 m PVC - 50 mm *
1 FO 62.5 / 125 MM12F SM12F
1 No. 14 1C, Tracer

STA. 94+162.5
10.1 m RT.

81.3 m PVC - 50 mm
1 FO 62.5 / 125 MM12F SM12F
1 No. 14 1C, Tracer

1.0 m PVC - 150 mm *
1 FO 62.5 / 125 MM12F SM12F
1 No. 14 1C, Tracer

BILL OF MATERIALS FIBER OPTIC INTERCONNECT - U.S. 136 (MAIN ST.) IOWA ST. TO OREGON ST.

ITEM	UNIT	QUANTITY
HANDHOLE	EACH	2
TRANSCEIVER - FIBER OPTIC	EACH	3
UNDERGROUND CONDUIT, PVC, 50MM DIA.	METER	571
ELECTRIC CABLE IN CONDUIT, TRACER, NO. 14 1C	METER	923
FIBER OPTIC CABLE IN CONDUIT, NO. 62.5/125, MM12F SM12F	METER	976

FILE NAME =	USER NAME = ceorlockjd	DESIGNED -	REVISED -
ct:\pw\work\pw\dot\ceorlockjd\0267091\ss\sheets.dgn		DRAWN -	REVISED -
	PLOT SCALE = 13.3000 m / in.	CHECKED -	REVISED -
#MODELNAME*	PLOT DATE = 8/17/2012	DATE -	REVISED -

STATE OF ILLINOIS
DEPARTMENT OF TRANSPORTATION

FIBER OPTIC INTERCONNECT DETAILS

SCALE: SHEET OF SHEETS STA. TO STA.

F.A.P. RTE.	SECTION	COUNTY	TOTAL SHEETS	SHEET NO.
729	36(W,RS-1) & 34Z-2(W,RS)	VERMILION	298	128
CONTRACT NO. 90939				
ILLINOIS FED. AID PROJECT				