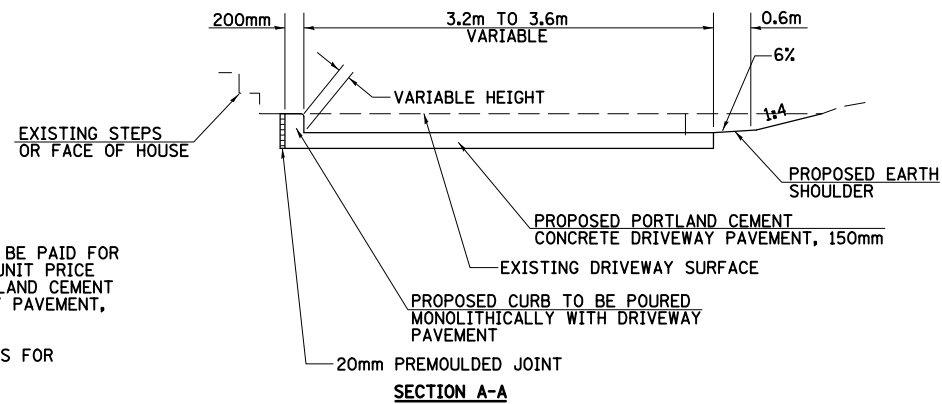
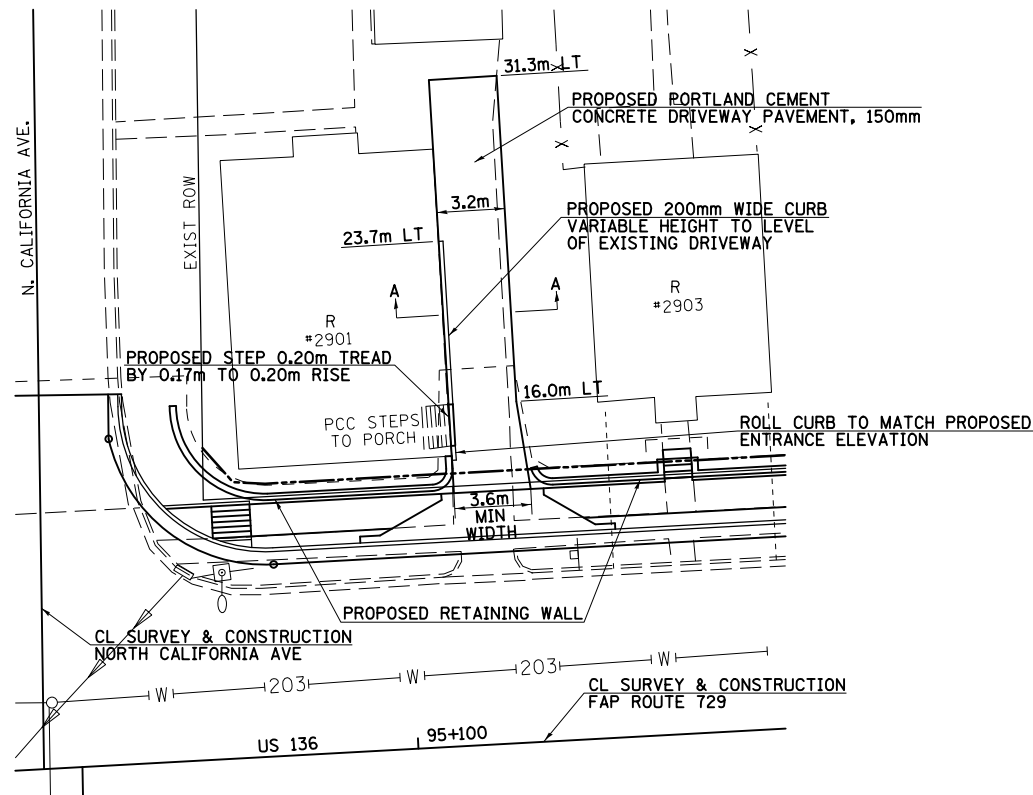
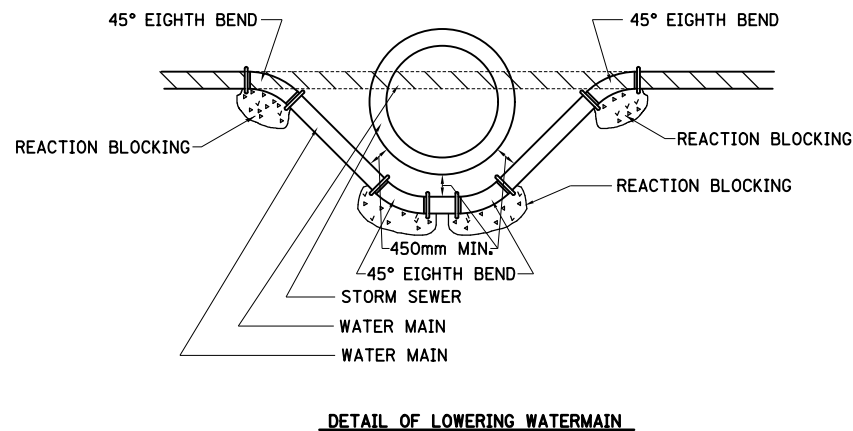


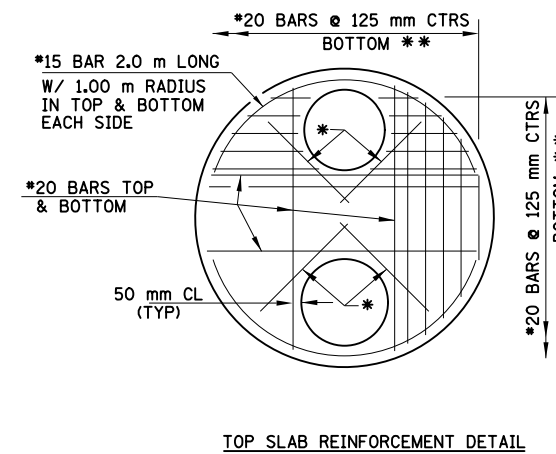
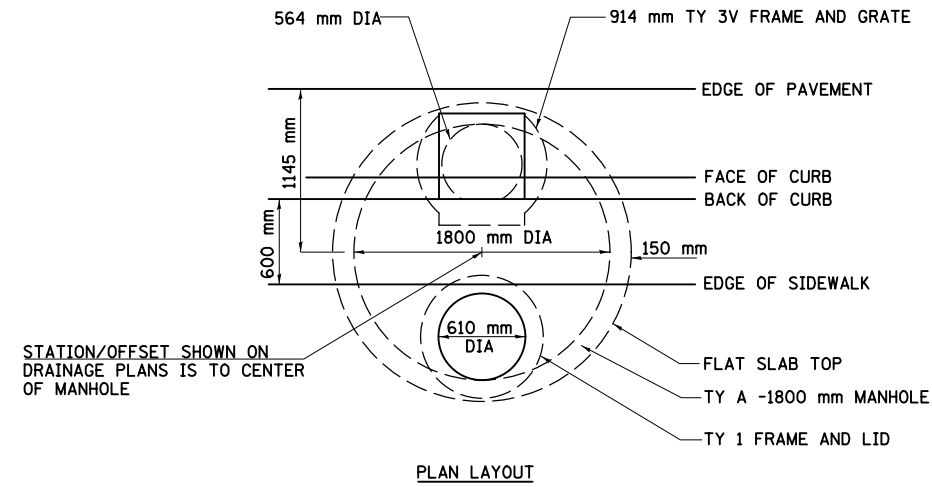
F.A.P. RTE.	SECTION	COUNTY	TOTAL SHEETS	SHEET NO.
729	*	VERMILION	298	163
STA.		TO STA.		
FED. ROAD DIST. NO.		ILLINOIS	FED. AID PROJECT	
* 36(W,RS-1) & 342-2(W,RS)		CONTRACT #90939		



NOTES:
 PROPOSED CURB TO BE PAID FOR AT THE CONTRACT UNIT PRICE PER SQ M AS PORTLAND CEMENT CONCRETE DRIVEWAY PAVEMENT, 150mm.
 SEE CROSS SECTIONS FOR DRIVEWAY GRADES.



SPECIAL MANHOLE DETAILS



MANHOLES, TYPE A, SPECIAL, 1.8m DIA, TYPE 1 FRAME CLOSED LID AND TYPE 3 OR 11 FRAME AND GRATE

- * *15 BARS TOP & BOTTOM (800 mm LONG)
- ** BEND OR CUT BARS FOR 50 mm CLEARANCE AROUND OPENINGS

GENERAL NOTES

1. SLAB TOP REINFORCEMENT SHALL BE REBARS AS SHOWN ABOVE OR WELDED WIRE FABRIC IN ACCORDANCE WITH FABRIC REINFORCEMENT SHOWN ON STD 602406
2. ALL OTHER REQUIREMENTS FOR STEPS, MATERIALS, LIFTING DEVICES, JOINT CONFIGURATIONS, ETC SHALL COMPLY WITH THE DETAILS AND NOTES SHOWN ON STD 602406
3. THE BAR SIZES AND REINFORCEMENT AREAS SHOWN ARE MINIMUM ACCEPTABLE VALUES.
4. ALL DIMENSIONS ARE IN MILLIMETERS (mm) EXCEPT AS NOTED

REVISIONS	
NAME	DATE

ILLINOIS DEPARTMENT OF TRANSPORTATION
MISCELLANEOUS DETAILS
 DRAWN BY CT
 CHECKED BY AWM
 DATE AUGUST 2003