

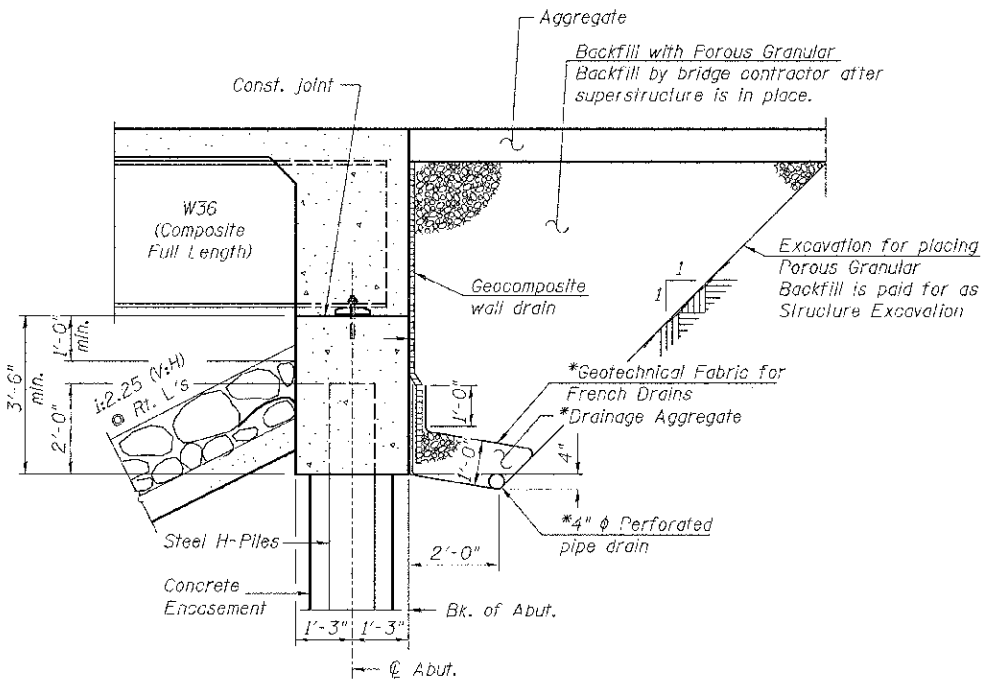
TOTAL BILL OF MATERIAL

ITEM	UNIT	SUPER	SUB	TOTAL
Channel Excavation	CU YD	---	540	540
① Porous Granular Backfill	CU YD	---	95	95
Stone Riprap, Class A5	TON	---	1,190	1,190
Filter Fabric	SQ YD	---	935	935
① Removal of Existing Structures	EACH	---	1	1
Structure Excavation	CU YD	---	85	85
Cofferdam Excavation	CU YD	---	85	85
① Cofferdam (Type 1) (Location-1) Pier #1	EACH	---	1	1
① Cofferdam (Type 1) (Location-2) Pier #2	EACH	---	1	1
Concrete Structures	CU YD	---	152.5	152.5
Concrete Superstructure	CU YD	170.1	---	170.1
Bridge Deck Grooving	SQ YD	565	---	565
Concrete Encasement	CU YD	---	20.9	20.9
Protective Coat	SQ YD	680	---	680
Furnishing and Erecting Structural Steel	L SUM	1	---	1
Stud Shear Connectors	EACH	3,120	---	3,120
Reinforcement Bars, Epoxy Coated	POUND	43,110	13,620	56,730
Steel Railing, Type S-1	FOOT	424	---	424
Furnishing Steel Piles HP10x42	FOOT	---	246	246
Furnishing Steel Piles HP12x63	FOOT	---	558	558
Driving Piles	FOOT	---	246	246
Test Pile Steel HP10x42	EACH	---	2	2
Name Plates	EACH	---	1	1
Anchor Bolts, 1"	EACH	40	---	40
Geocomposite Wall Drain	SQ YD	---	53	53
① Pipe Underdrains For Structures 4"	FOOT	---	104	104
① Setting Piles in Rock	EACH	---	12	12

① See Special Provisions

GENERAL NOTES

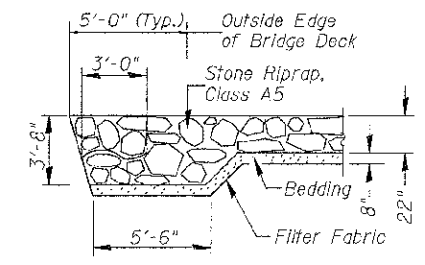
The Contractor shall drive test piles to 110% of the nominal required bearing specified in production locations at the substructures specified or approved by the Engineer before ordering the remainder of the piles.
 All structural steel shall be AASHTO M 270 Grade 50W.
 Calculated weight of Structural Steel = 163,860 lbs. (AASHTO M270, Grade 50W).
 Fasteners shall be AASHTO M164 Type 1, mechanically galvanized bolts (in painted areas and M164 Type 3 in unpainted areas). Bolts 7/8 in. ϕ , holes 15/16 in. ϕ , unless otherwise noted.
 No field welding is permitted except as specified in the contract documents.
 Reinforcement bars designated (E) shall be epoxy coated.
 Structural steel shall only be painted for a distance equal to the depth of embedment into the concrete cap plus 3 inches. Painted areas shall be primed in the shop with a Department approved zinc rich primer. Field painting will not be required.
 Layout of slope protection system may be varied in the field to suit ground conditions as directed by the engineer.
 The existing structural steel coating contains lead. The Contractor shall take appropriate precautions to deal with the presence of lead on this project.
 Bearing seat surfaces shall be constructed or adjusted to the designated elevations within a tolerance of 1/8 inch (0.01 ft.). Adjustment shall be made either by grinding the surface or by shimming the bearings.
 Protective coat shall be applied to the top and sides of the deck.
 For Soil Boring Logs, See Special Provisions.
 The embankment configuration shown shall be the minimum that must be placed and compacted prior to construction of the abutments.



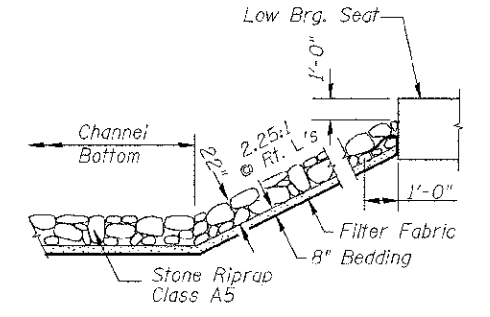
*Included in the cost of Pipe Underdrains for Structures.

Note:
 All drainage system components shall extend to 2'-0" from the end of each wingwall except an outlet pipe shall extend until intersecting with the side slopes. The pipes shall drain into concrete headwalls. (See Article 601.05 of the Standard Specifications and Highway Standard 601101)

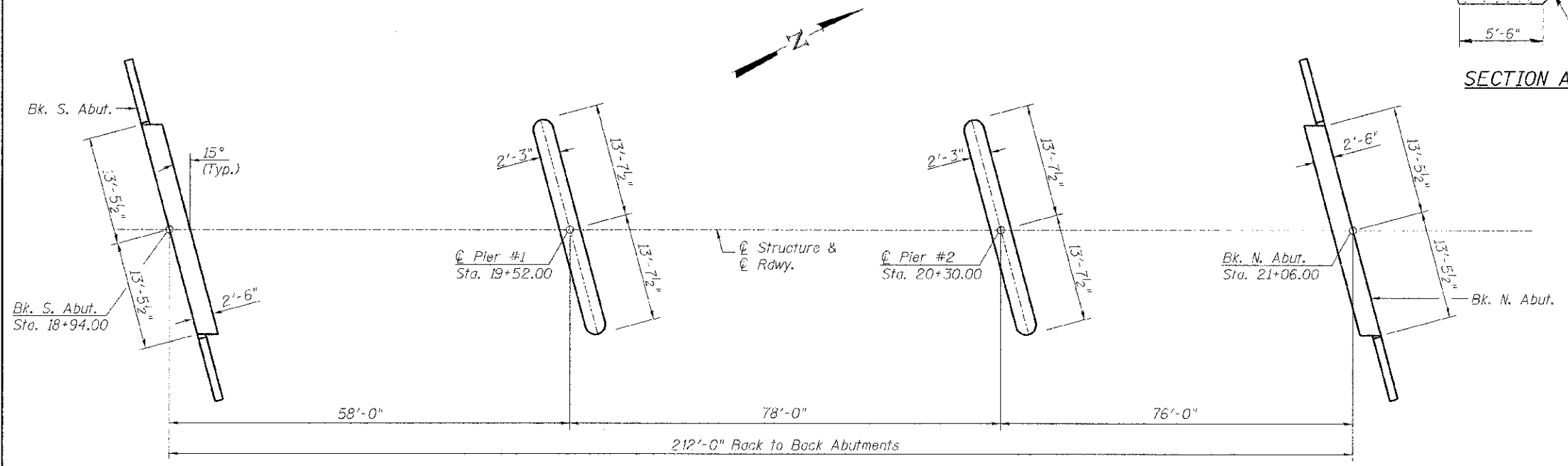
SECTION THRU INTEGRAL ABUTMENT
 (At Right Angles)



SECTION A-A



STONE RIPRAP DETAIL



FOOTING LAYOUT

GENERAL NOTES, BILL OF MATERIALS & FOOTING LAYOUT
C.H. 2 OVER SUGAR CREEK
SECTION 07-00073-00-BR
SCHUYLER COUNTY
STATION 20+00.00

SHEET NO. 2	ROUTE NO.	SECTION	COUNTY	TOTAL SHEETS	SHEET NO.
	17 SHEETS	CH 2	07-00073-00-BR	SCHUYLER	35
SN 085-3056			CONTRACT NO. 93584		
FED. ROAD DIST. NO. 7 ILLINOIS			FED. AID PROJECT BRS-0455(107)		