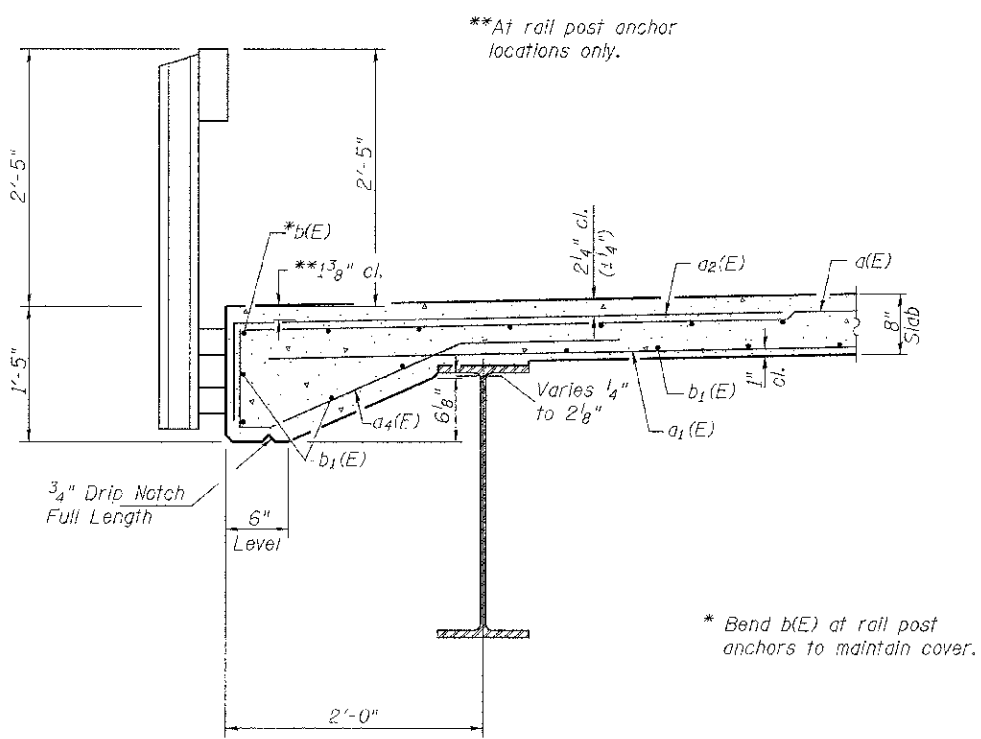


RAIL POST SPACING

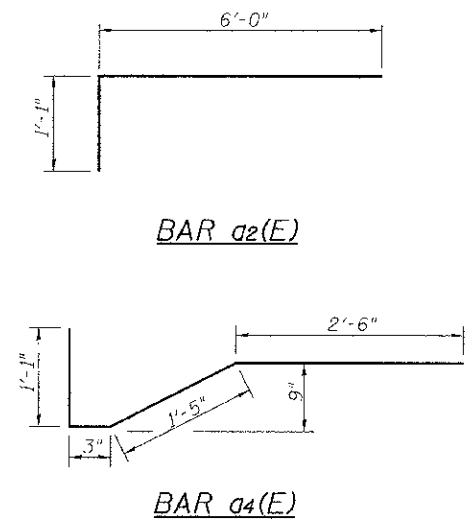
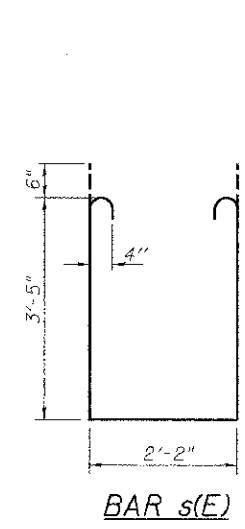


SECTION A-A

See Sheet 9 of 17 for Rail Post Anchor Details

**SUPERSTRUCTURE
BILL OF MATERIAL**

Bar	No.	Size	Length	Shape
a(E)	363	#5	25'-9"	—
a1(E)	254	#5	24'-9"	—
a2(E)	726	#6	7'-1"	┌
a3(E)	4	#5	26'-7"	—
a4(E)	364	#5	5'-3"	└
b(E)	189	#5	32'-6"	—
b1(E)	224	#5	28'-9"	—
b2(E)	26	#6	34'-7"	—
b3(E)	26	#6	40'-9"	—
m(E)	6	#6	26'-7"	—
m1(E)	12	#6	9'-1"	—
m2(E)	8	#6	5'-5"	—
m3(E)	4	#6	1'-11"	—
m4(E)	8	#6	6'-6"	—
s(E)	52	#4	10'-0"	□
Reinforcement Bars, Epoxy Coated Concrete Superstructure			POUND	43,110
			CU YD	170.1



**SUPERSTRUCTURE DETAILS
C.H. 2 OVER SUGAR CREEK
SECTION 07-00073-00-BR
SCHUYLER COUNTY
STATION 20+00.00**

SHEET NO. 7 17 SHEETS	ROUTE NO.	SECTION	COUNTY	TOTAL SHEETS	SHEET NO.
	CH 2	07-00073-00-BR	SCHUYLER	35	13
SN 085-3056			CONTRACT NO. 93584		
FED. ROAD DIST. NO. 7 ILLINOIS			FED. AID PROJECT BRS-0455(107)		