

**DIAPHRAGM ELEVATION**

**Notes:**

Reinforcement bars in diaphragm are billed with superstructure on Sheet 7 of 17.

Concrete in diaphragm is included with Concrete Superstructure on Sheet 7 of 17.

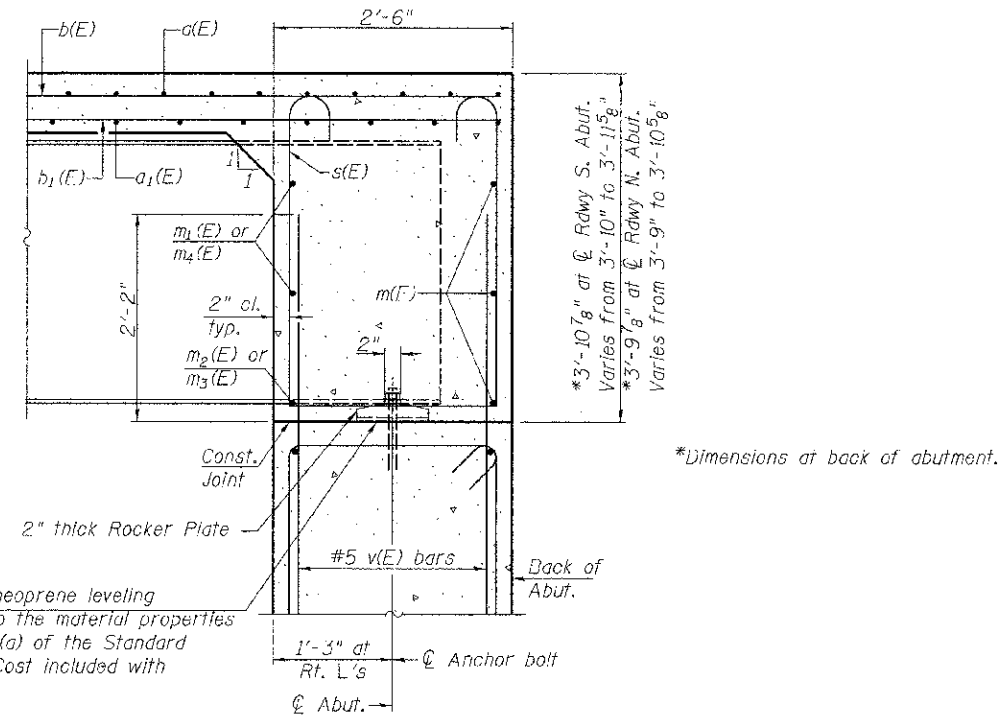
See Sheet 1 of 17 for detail of bar s(E)

The s(E) bars shall be placed parallel to the beams. Spacing for these bars shall be at right angles to the beams.

See Sheet 13 & 14 of 17 for placement of v(E) bars.

**MIN. BAR LAP**

#6 bar = 3'-4"



**SECTION A-A**

Dimensions at right angles to abutment, except as shown.

**DIAPHRAGM DETAILS**  
**C.H. 2 OVER SUGAR CREEK**  
**SECTION 07-00073-00-BR**  
**SCHUYLER COUNTY**  
**STATION 20+00.00**

SHEET NO. 8 17 SHEETS	ROUTE NO.	SECTION	COUNTY	TOTAL SHEETS	SHEET NO.
	CH 2	07-00073-00-BR	SCHUYLER	35	14
SN 085-3056			CONTRACT NO. 93584		
FED. ROAD DIST. NO. 7 ILLINOIS			FED. AID PROJECT BRS-0455(107)		