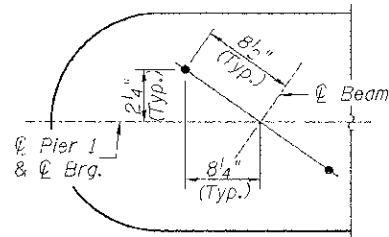
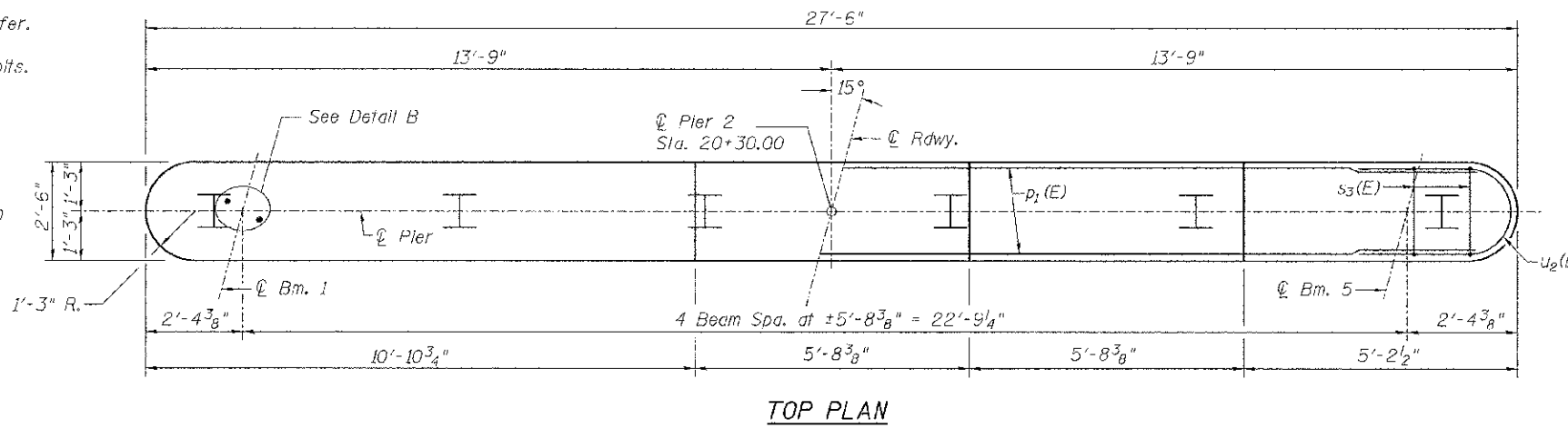


**Notes:**

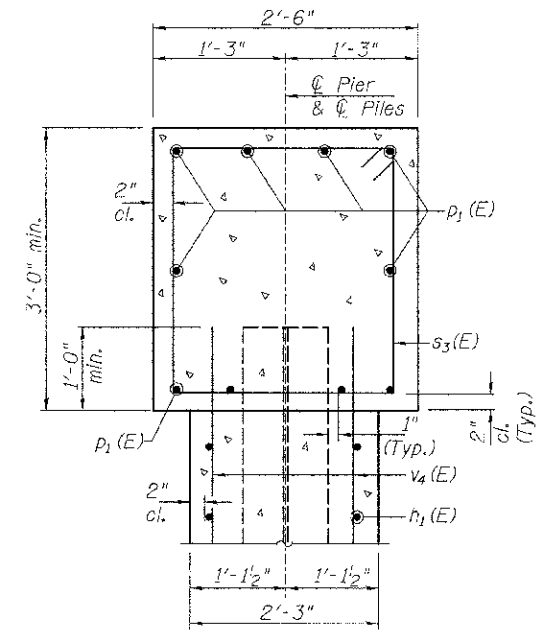
All edges shall have standard  $\frac{3}{4}$ " chamfer.  
 Pour steps monolithically with cap.  
 Space reinforcement to miss anchor bolts.  
 See Sh. 17 of 17 for pile, rock socket,  
 and concrete encasement details.



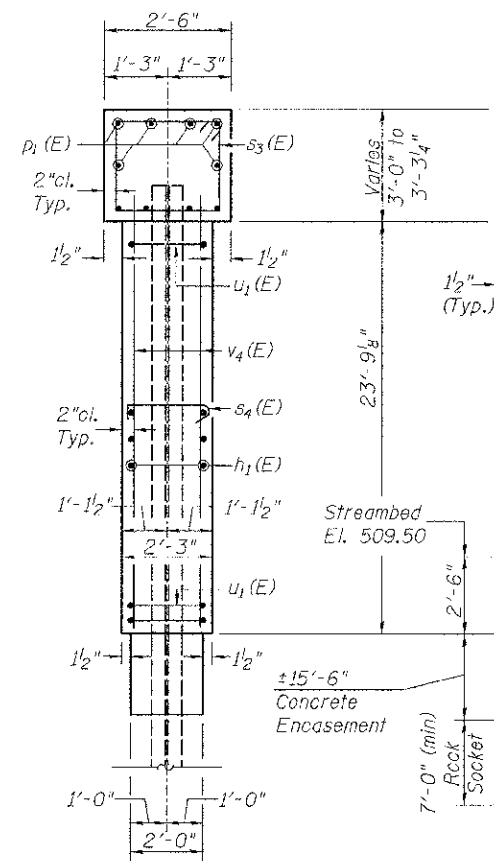
**DETAIL B**  
**ANCHOR BOLT LOCATION**



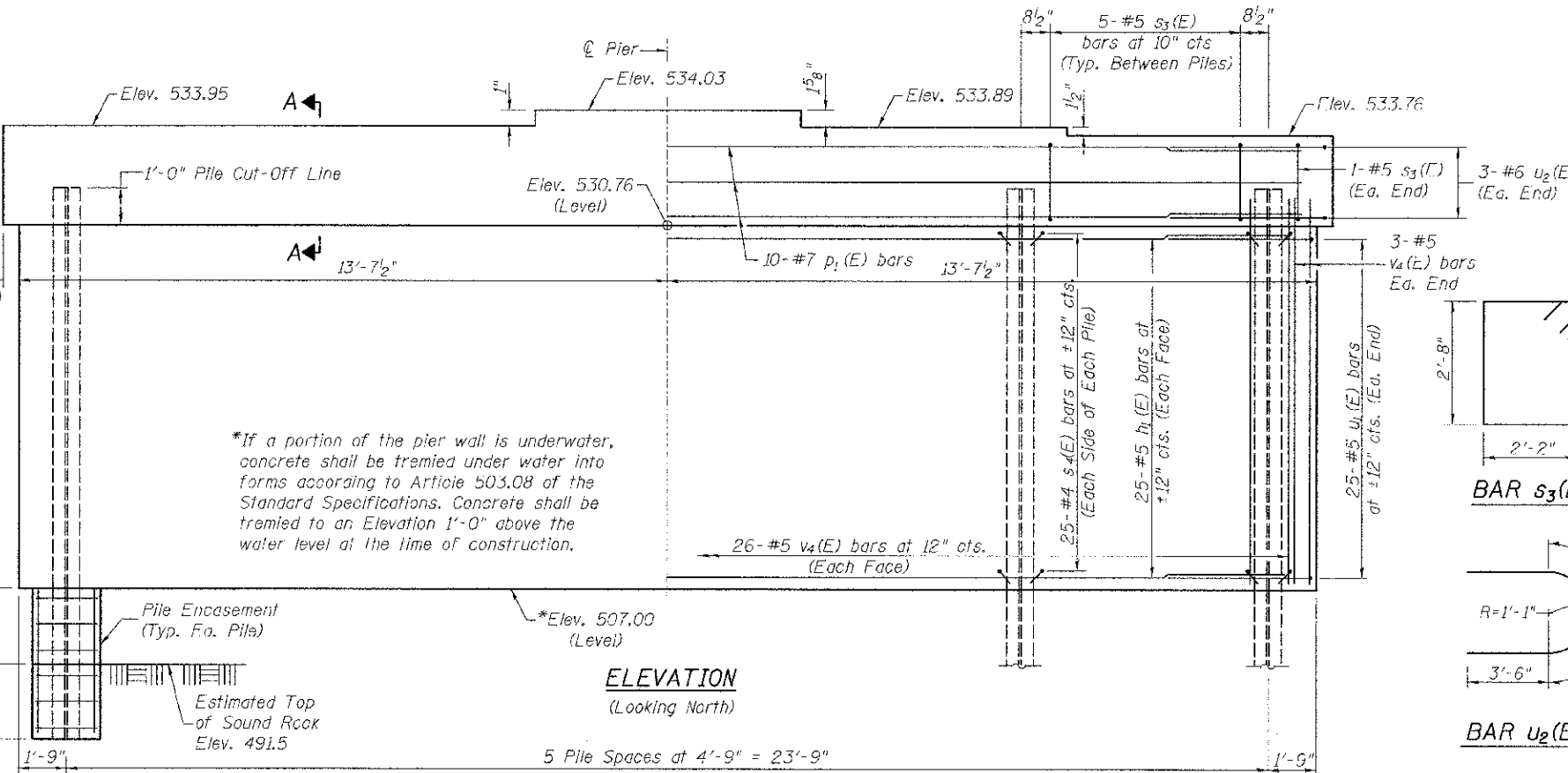
**TOP PLAN**



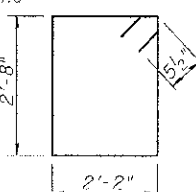
**SECTION A-A**



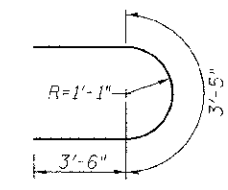
**END VIEW**



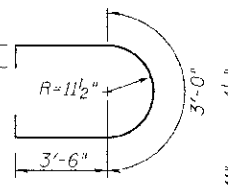
**ELEVATION**  
 (Looking North)



**BAR s3(E)**



**BAR u2(E)**



**BAR u1(E)**

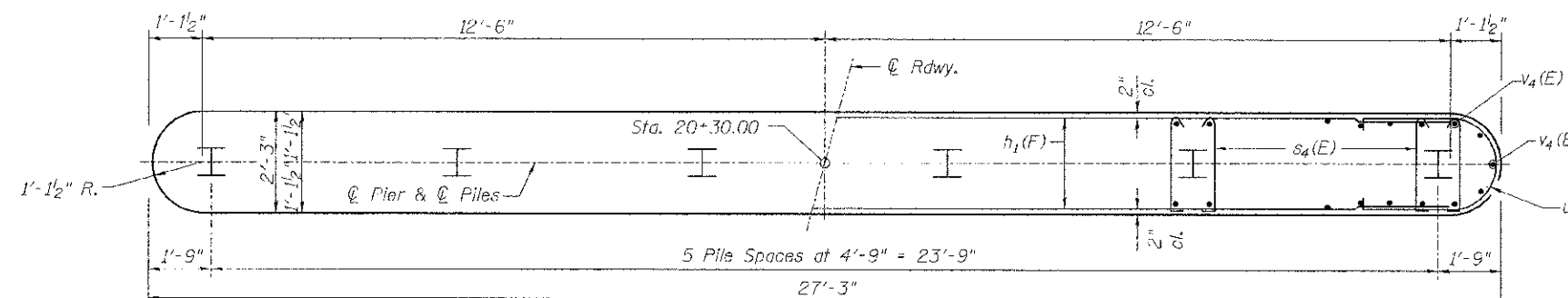


**BAR s4(E)**

**PIER #2**  
**BILL OF MATERIAL**

Bar	No.	Size	Length	Shape	
h1(E)	50	#5	25'-0"	—	
u1(E)	10	#7	25'-0"	—	
s3(E)	27	#5	10'-7"	□	
s4(E)	300	#4	3'-0"	U	
u1(E)	50	#5	11'-8"	U	
u2(F)	6	#6	10'-5"	U	
v4(E)	58	#5	24'-9"	—	
Concrete Structures				CY YD	60.9
Cofferdam Excavation				CY YD	40
Reinforcement Bars, Epoxy Coated				POUND	4,910
Furnishing Steel Piles HP12x63				FOOT	288
Setting Piles in Rock				EACH	6
Concrete Encasement				CY YD	10.8
Cofferdam (Type 1) (Location-2)				EACH	1

① See Special Provisions



**FOOTING PLAN**

**PILE DATA**

Type & Size: Steel HP12x63  
 Nominal Required Bearing: Set in Rock (497 kips)  
 Factored Resistance Available: (273 kips)  
 Est. Length: 48'  
 No. Required: 6

**PIER #2**  
**C.H. 2 OVER SUGAR CREEK**  
**SECTION 07-00073-00-BR**  
**SCHUYLER COUNTY**  
**STATION 20+00.00**

SHEET NO. 16	ROUTE NO.	SECTION	COUNTY	TOTAL SHEETS	SHEET NO.
	CH 2	07-00073-00-BR	SCHUYLER	35	22
17 SHEETS	SN 085-3056		CONTRACT NO. 98584		
	FED. ROAD DIST. NO. 7 ILLINOIS		FED. AID PROJECT BRS-0455(107)		