

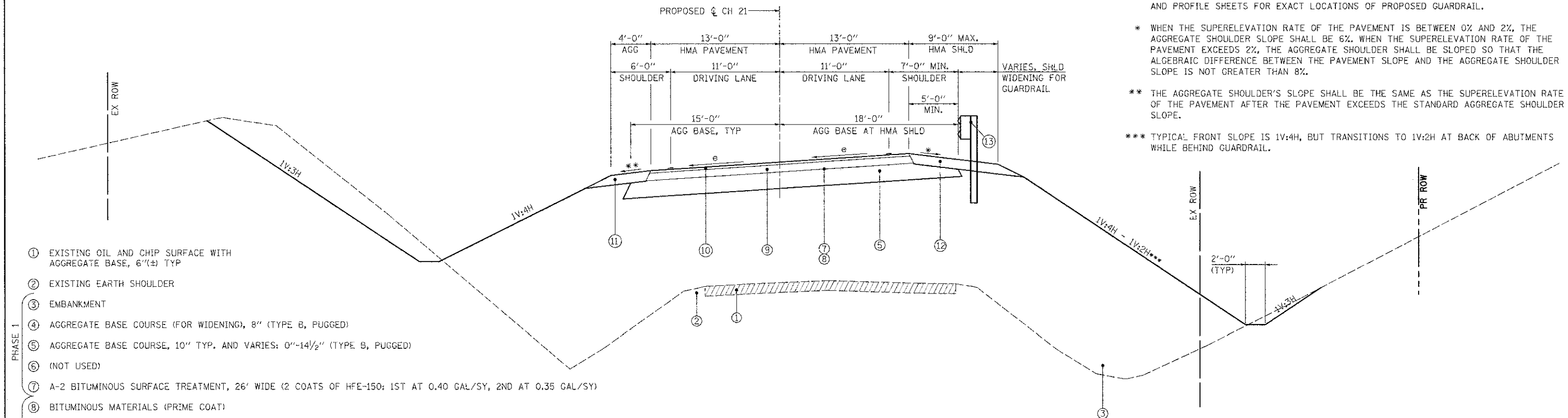
**PROPOSED NEW CONSTRUCTION  
TYPICAL TANGENT SECTION**

STA 26+23 TO STA 26+40  
STA 27+60 TO STA 32+00

**NOTES:**

- TYPICAL SECTIONS CONTROL BASE & SUBBASE CONSTRUCTION OVER CROSS SECTIONS.
- SEE GENERAL NOTE 2 FOR CONSTRUCTION SEQUENCING.
- SEE GENERAL NOTES AND SPECIFICATIONS FOR AGGREGATE TYPE B REQUIREMENTS.
- A PRESET GRADE CONTROL STRINGLINE SHALL BE USED FOR THE FULL PROJECT. SEE GENERAL NOTES.
- WIDENING DUE TO PROPOSED REALIGNMENT MAY BE ON ONE OR BOTH SIDES. SEE PLAN AND PROFILE SHEETS AND CROSS SECTIONS.
- GUARDRAIL MAY BE LOCATED ON ONE SIDE, BOTH SIDES OR NEITHER SIDE. SEE PLAN AND PROFILE SHEETS FOR EXACT LOCATIONS OF PROPOSED GUARDRAIL.

- \* WHEN THE SUPERELEVATION RATE OF THE PAVEMENT IS BETWEEN 0% AND 2%, THE AGGREGATE SHOULDER SLOPE SHALL BE 6%. WHEN THE SUPERELEVATION RATE OF THE PAVEMENT EXCEEDS 2%, THE AGGREGATE SHOULDER SHALL BE SLOPED SO THAT THE ALGEBRAIC DIFFERENCE BETWEEN THE PAVEMENT SLOPE AND THE AGGREGATE SHOULDER SLOPE IS NOT GREATER THAN 8%.
- \*\* THE AGGREGATE SHOULDER'S SLOPE SHALL BE THE SAME AS THE SUPERELEVATION RATE OF THE PAVEMENT AFTER THE PAVEMENT EXCEEDS THE STANDARD AGGREGATE SHOULDER SLOPE.
- \*\*\* TYPICAL FRONT SLOPE IS 1V:4H, BUT TRANSITIONS TO 1V:2H AT BACK OF ABUTMENTS WHILE BEHIND GUARDRAIL.



**PROPOSED NEW CONSTRUCTION  
TYPICAL SUPERELEVATED SECTION**

STA 23+00 TO STA 26+23  
STA 34+50 TO STA 40+50

- ① EXISTING OIL AND CHIP SURFACE WITH AGGREGATE BASE, 6" (TYP)
- ② EXISTING EARTH SHOULDER
- ③ EMBANKMENT
- ④ AGGREGATE BASE COURSE (FOR WIDENING), 8" (TYPE B, PUGGED)
- ⑤ AGGREGATE BASE COURSE, 10" TYP. AND VARIES: 0"-14 1/2" (TYPE B, PUGGED)
- ⑥ (NOT USED)
- ⑦ A-2 BITUMINOUS SURFACE TREATMENT, 26' WIDE (2 COATS OF HFE-150; 1ST AT 0.40 GAL/SY, 2ND AT 0.35 GAL/SY)
- ⑧ BITUMINOUS MATERIALS (PRIME COAT)
- ⑨ HOT-MIX ASPHALT BINDER COURSE, 4 1/2"
- ⑩ HOT-MIX ASPHALT SURFACE COURSE, 1 1/2"
- ⑪ AGGREGATE SHOULDERS, 6"
- ⑫ HOT-MIX ASPHALT SHOULDER AT GUARDRAIL WIDENING (1 1/2" HMA SURFACE CSE. OVER 4 1/2" HMA BINDER CSE.)
- ⑬ GUARDRAIL

**STATE OF ILLINOIS  
DEPARTMENT OF TRANSPORTATION**

**TYPICAL ROADWAY SECTIONS**

FILE NAME =	USER NAME = USERDESCR	DESIGNED - K.M.M.	REVISED -
PLCT SE&E = 5.0000 1/1 IN		DRAWN - K.H.L.	REVISED -
PLCT DATE = 9/7/2012		CHECKED - L.D.G.	REVISED -
		DATE	REVISED -

SCALE:	SHEET NO. 2 OF 2 SHEETS	STA.	TO STA.
--------	-------------------------	------	---------

FAS RTE	SECTION	COUNTY	TOTAL SHEETS	SHEET NO.
779	07-00085-00-8R	BOND	41	6
SN 003-3053		CONTRACT NO. 97508		
ILLINOIS FEDERAL AID PROJECT				