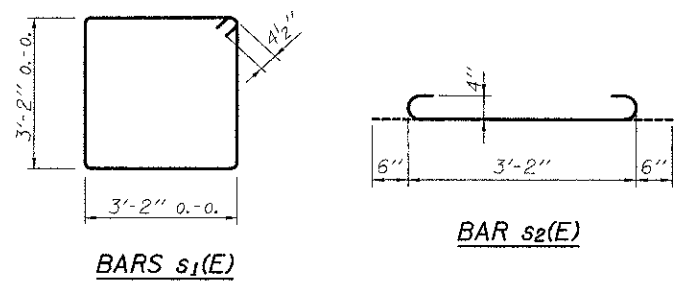


SECTION THRU PIER
(at Right Angles)

**BILL OF MATERIAL
ONE PIER**

Bar	No.	Size	Length	Shape
p2(E)	8	#7	36'-2"	—
p3(E)	10	#4	36'-2"	—
s1(E)	36	#4	13'-5"	□
s2(E)	85	#4	4'-2"	U
u1(E)	14	#6	12'-1"	□
Concrete Structures			Cu. Yd.	17.2
Concrete Encasement - Pier 1			Cu. Yd.	34.6
Concrete Encasement - Pier 2			Cu. Yd.	30.2
Reinforcement Bars, Epoxy Coated			Pound	1,650
Furnishing Steel Piles HP 12x53 - Pier 1			Foot	240
Furnishing Steel Piles HP 12x53 - Pier 2			Foot	216
Setting Piles in Rock			Each	6

Notes:
 For Details of Piles and Concrete Encasement, see sheet 9 of 10.
 Space reinforcement in pile cap to miss dowel rods.
 If a portion of the drilled shaft, web walls or concrete encasement is under water, reinforcement may be placed underwater into forms. Concrete shall be tremied according to Article 503.08 of the Standard Specifications to an elevation of 1'-0" above the water line at the time of construction.



PILE DATA

	PIER 1	PIER 2
Type:	Steel HP 12x53	Steel HP 12x53
Nominal Required Bearing:	Set in Rock	Set in Rock
Factored Resistance Available:	426 k	426 k
Est. Length:	40 ft.	36 ft.
No. Production Piles:	6	6
No. Test Piles:	0	0

ELEVATION

STATE OF ILLINOIS
DEPARTMENT OF TRANSPORTATION

PIER DETAILS