

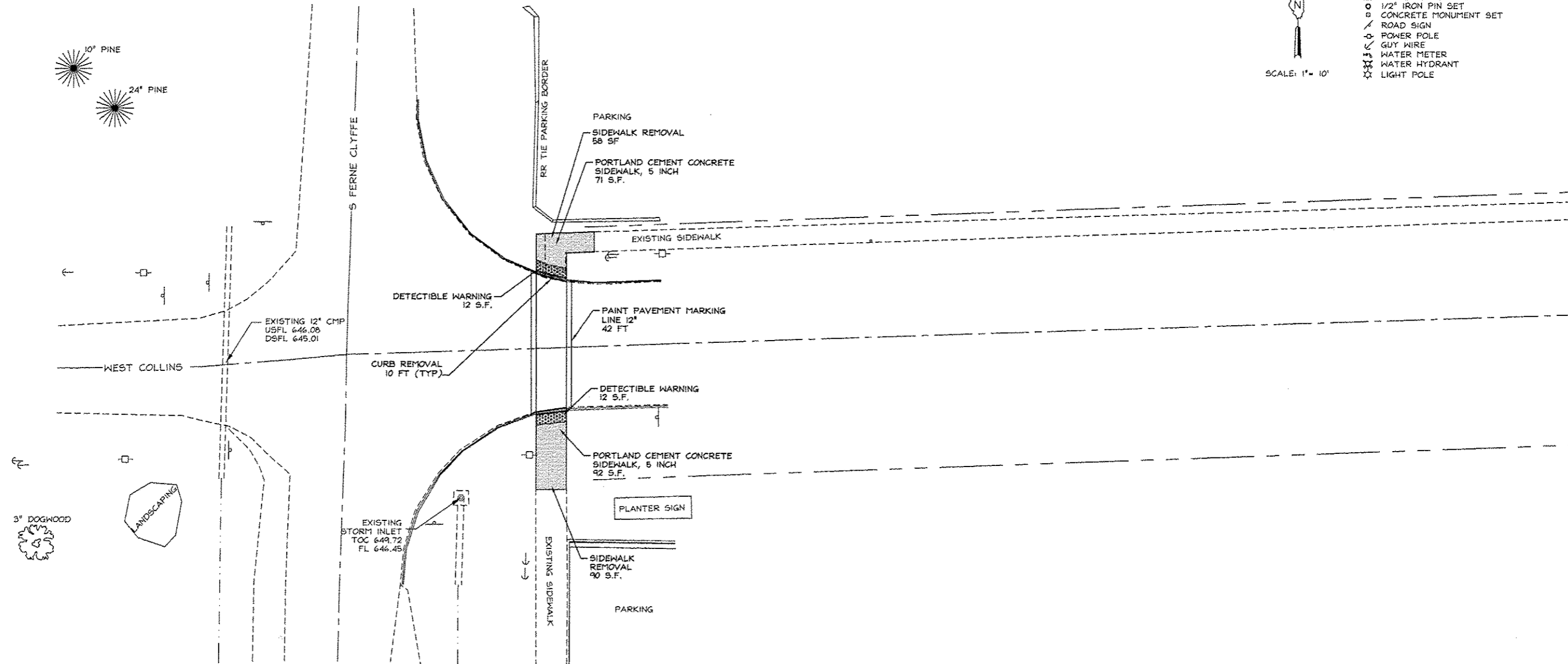
F.A. RTE.	SECTION	COUNTY	TOTAL SHEETS	SHEET NO.
HWY 37 & COLLINS	10-00004-00-89H	JOHNSON	15	3



SCALE: 1" = 10'

LEGEND

- IRON PIN FOUND
- △ STONE FOUND
- 1/2" IRON PIN SET
- CONCRETE MONUMENT SET
- ROAD SIGN
- POWER POLE
- GUY WIRE
- WATER METER
- WATER HYDRANT
- ☆ LIGHT POLE



NO.	DESCRIPTION	BY	DATE	NO.	DESCRIPTION	BY	DATE
					DESIGNED		
					DRAWN	WFL	3/27/12
					CHECKED	JHC	3/27/12

VILLAGE OF GOREVILLE
 JOHNSON COUNTY, IL
 SCHOOL SAFE WAY PLAN
 PLAN SHEET



JOHN H. CRAWFORD & ASSOCIATES, P.C.
 CIVIL ENGINEERS, LAND SURVEYORS
 201 SOUTH DIVISION STREET, CARTERSVILLE, ILLINOIS 62810
 PHONE (618) 985-6370 FAX (618) 985-4682
 PROFESSIONAL DESIGN FIRM # 184-002885

SHEET NO.	
3	
ISSUE	DATE
A	3/27/12

\s\jhc\p\120312\120312-001.dwg, 6/15/2012 10:35:24 AM