

11-09-2018 LETTING ITEM 013

STATE OF ILLINOIS
DEPARTMENT OF TRANSPORTATION
DIVISION OF HIGHWAYS

**PROPOSED
HIGHWAY PLANS**

FAU 1548 /79TH STREET OVER CSX RAILROAD
0.6 MILES WEST OF IL 43 (SN 016-0519)
SECTION 2018-010-B-R
PROJECT STP-XG9I(700)
BRIDGE REPAIR
COOK COUNTY
C-91-181-18

| F.A. RTE. | SECTION | COUNTY | TOTAL SHEETS | SHEET NO. |
|-----------|--------------|--------|--------------------|-----------|
| 1548 | 2018-010-B-R | COOK | 10 | 1 |
| ILLINOIS | | | CONTRACT NO. 62G32 | |

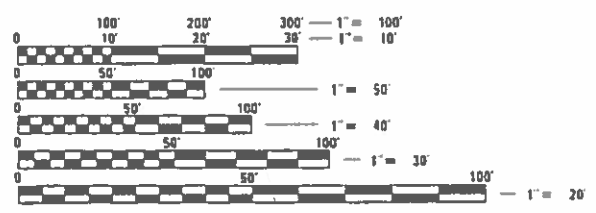
D-91-283-18



FOR INDEX OF SHEETS, SEE SHEET NO. 2
FOR A LIST OF HIGHWAY STANDARDS, SEE SHEET NO. 2

EXISTING ADT = 23,800 (2014)
POSTED SPEED LIMIT = 35 MPH

PROJECT IS LOCATED IN THE
VILLAGE OF BRIDGEVIEW

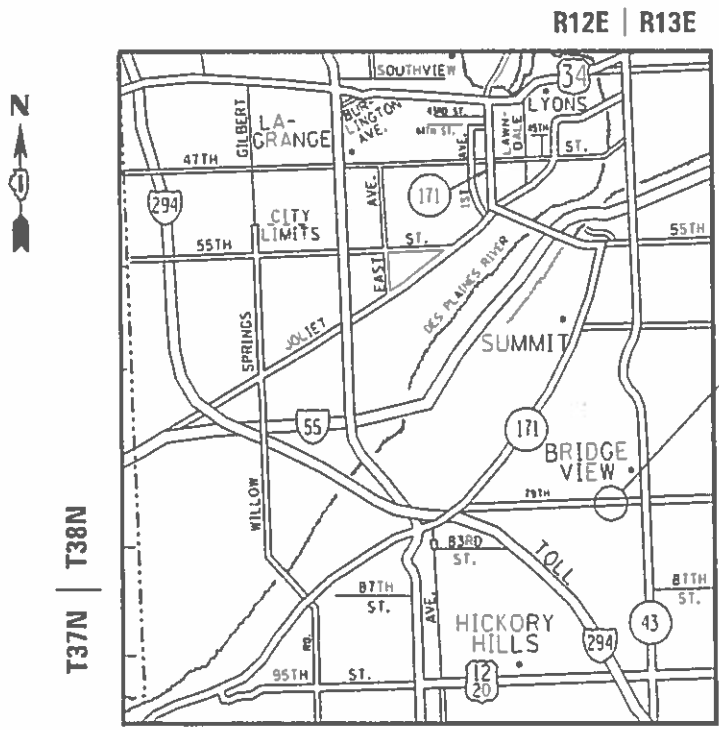


FULL SIZE PLANS HAVE BEEN PREPARED USING STANDARD
ENGINEERING SCALES. REDUCED SIZED PLANS WILL NOT
CONFORM TO STANDARD SCALES. IN MAKING MEASUREMENTS
ON REDUCED PLANS, THE ABOVE SCALES MAY BE USED.

J.U.L.I.E.
JOINT UTILITY LOCATION INFORMATION FOR EXCAVATION
1-800-892-0123
OR 811

PROJECT ENGINEER: RAGHAD ADEIS-DAHMAN, PE, SE (847) 705-4237
PROJECT MANAGER: FAWAD AQUEEL, PE, PTOE (847) 705-4247

CONTRACT NO. 62G32



LYONS TOWNSHIP
LOCATION MAP
NOT TO SCALE

GROSS LENGTH = 256.50 FT. = 0.049 MILE
NET LENGTH = 256.50 FT. = 0.049 MILE

PROPOSED IMPROVEMENT
SN 016-0519

STATE OF ILLINOIS
DEPARTMENT OF TRANSPORTATION

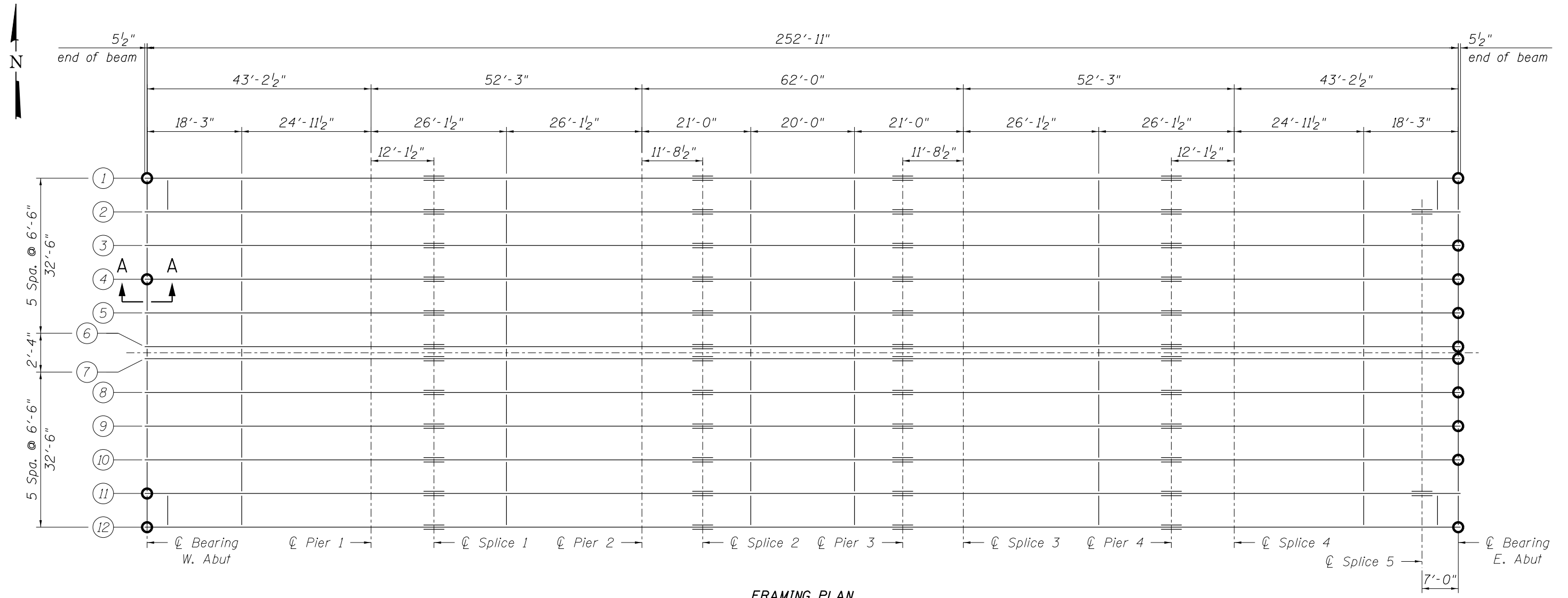
SUBMITTED August 13, 2018

Anthony A. Deringer / MS
REGIONAL ENGINEER

Oct 5, 2018
A. ETK
ENGINEER OF DESIGN AND ENVIRONMENT

Oct 5, 2018
DIRECTOR OF HIGHWAYS PROJECT IMPLEMENTATION

PRINTED BY THE AUTHORITY
OF THE STATE OF ILLINOIS



FRAMING PLAN

LEGEND

- Indicates Beam Ends to be Repaired
- ⑫ Indicates Beam Number

NOTES:

Cost of furnishing and installing angles included with Structural Steel Repair.

Two hardened washers required for each set of oversized holes.

See Sheet S3 of S5 for Beam Ends Repair Details. (Section A-A)

MODEL: Default
 FILE NAME: p:\w\11084EBID\INTEG\Illinois.gov\PW\DOT\Documents\DOT_Offices\Design\128318\CADData\Design\128318-ebfridge.dgn
 8/15/2018 8:33:43 AM

| | | |
|------------|--|-----------|
| DESIGNED - | EXAMINED | DATE - |
| CHECKED - | ACTING ENGINEER OF STRUCTURAL SERVICES | |
| DRAWN - | PASSED | REVISED - |
| CHECKED - | ENGINEER OF BRIDGES AND STRUCTURES | REVISED - |

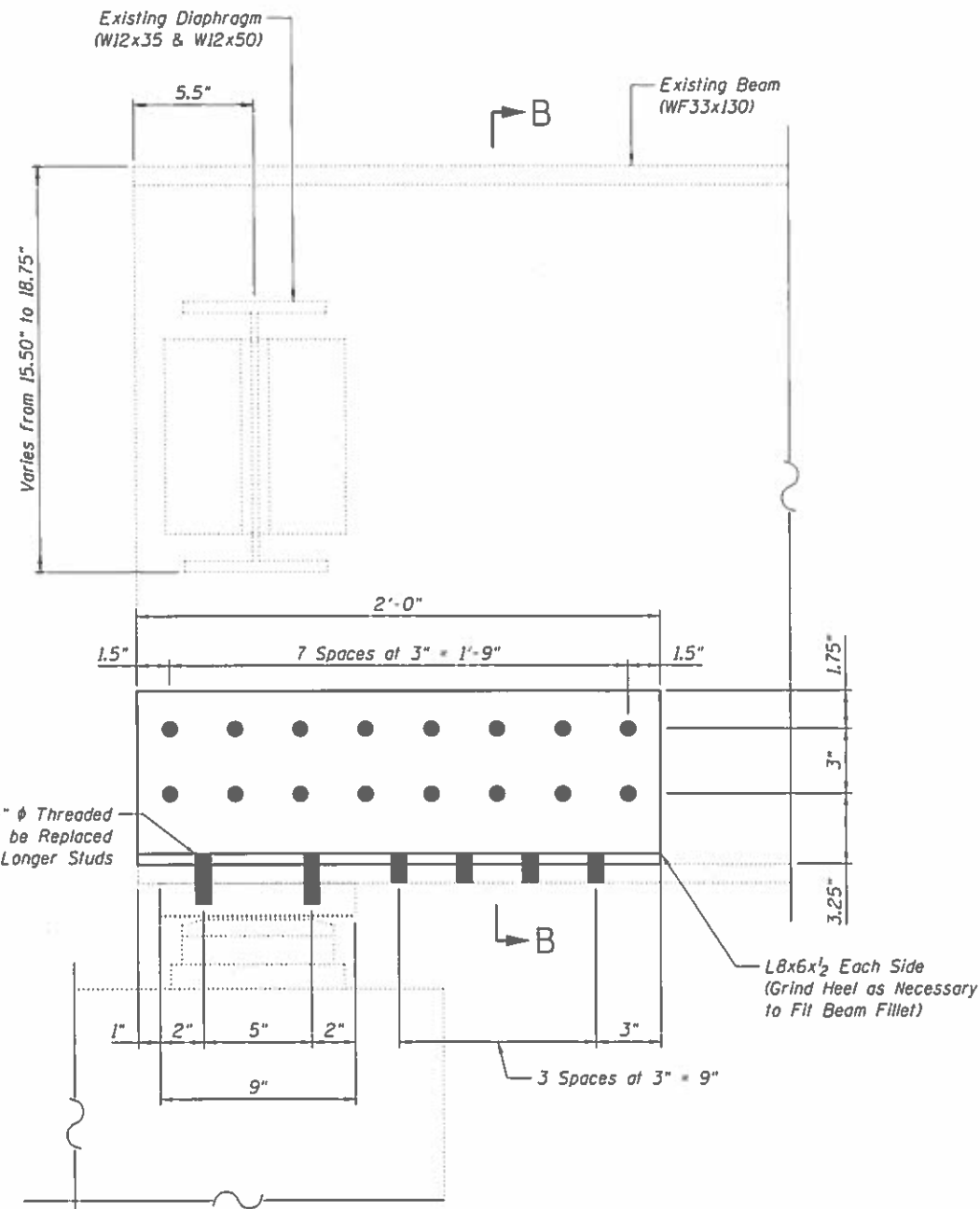
STATE OF ILLINOIS
DEPARTMENT OF TRANSPORTATION

FRAMING PLAN
79TH STREET OVER CSX RAILROAD (SN 016-0519)

SHEET S2 OF S5 SHEETS

| F.A.U. RTE. | SECTION | COUNTY | TOTAL SHEETS | SHEET NO. |
|--------------------|--------------|----------|------------------|-----------|
| 1548 | 2018-010-B-R | COOK | 10 | 6 |
| CONTRACT NO. 62G32 | | | | |
| | | ILLINOIS | FED. AID PROJECT | |

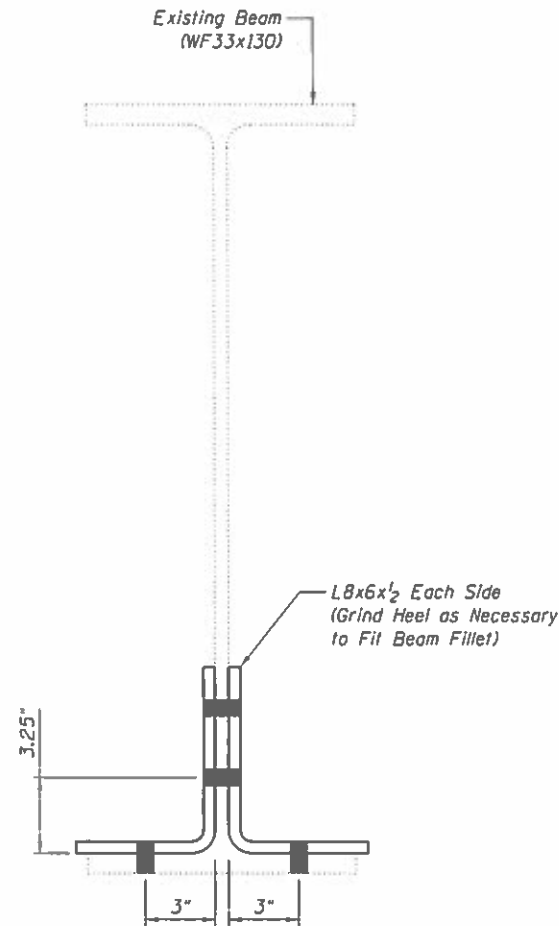
MODEL: Default
FILE NAME: p:\w\1084\EBID\INTEG\illinois.gov-PWD\DOT\Documents\DOT Office\District 11\Projects\1128318\CADD\ata\Design\1128318-crepair.dgn



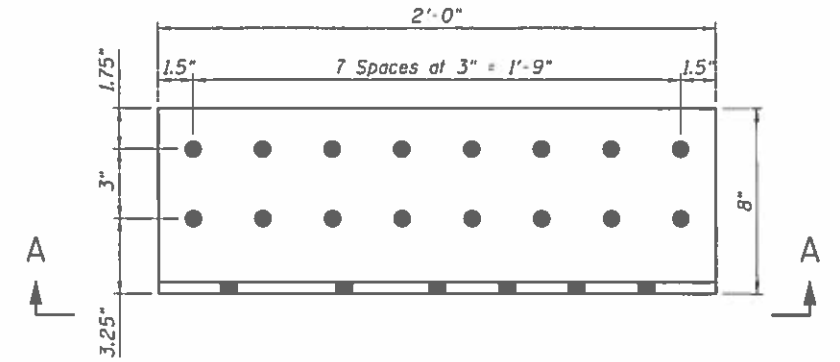
BEAM WEB REPAIR DETAIL
SECTION A-A

14 Required

Field Drill holes in existing beam's web and flange using new angles as template

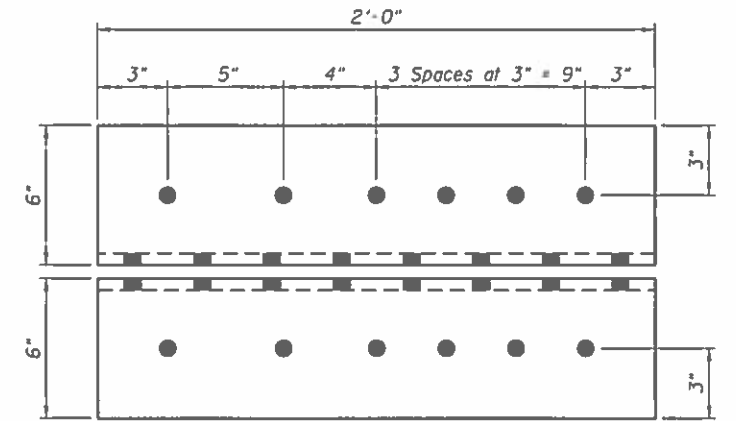


SECTION B-B



BEAM REPAIR ANGLE

L8x6x $\frac{1}{2}$
14 Pairs = 28 Total Required



VIEW A-A

BILL OF MATERIAL

| Item | Unit | Total |
|-------------------------|------|-------|
| Structural Steel Repair | Lbs. | 1300 |

| | | | | | |
|------------|------------|----------|--|-----------|--|
| DESIGNED - | RAD | EXAMINED | | DATE | |
| CHECKED - | CBK | PASSED | ACTING ENGINEER OF STRUCTURAL SERVICES | REVISED - | |
| DRAWN - | | | ENGINEER OF BRIDGES AND STRUCTURES | REVISED - | |
| CHECKED - | | | | | |

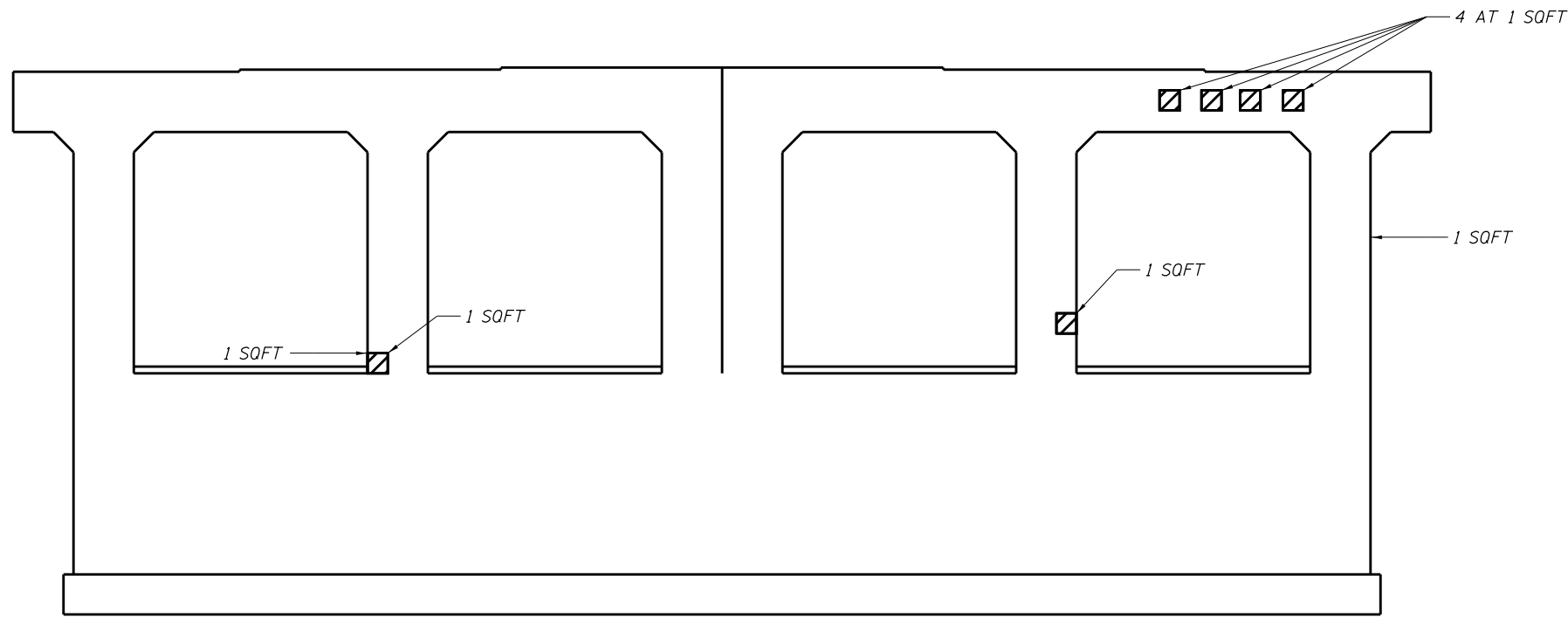
9/19/2018 8:16:24 AM

STATE OF ILLINOIS
DEPARTMENT OF TRANSPORTATION

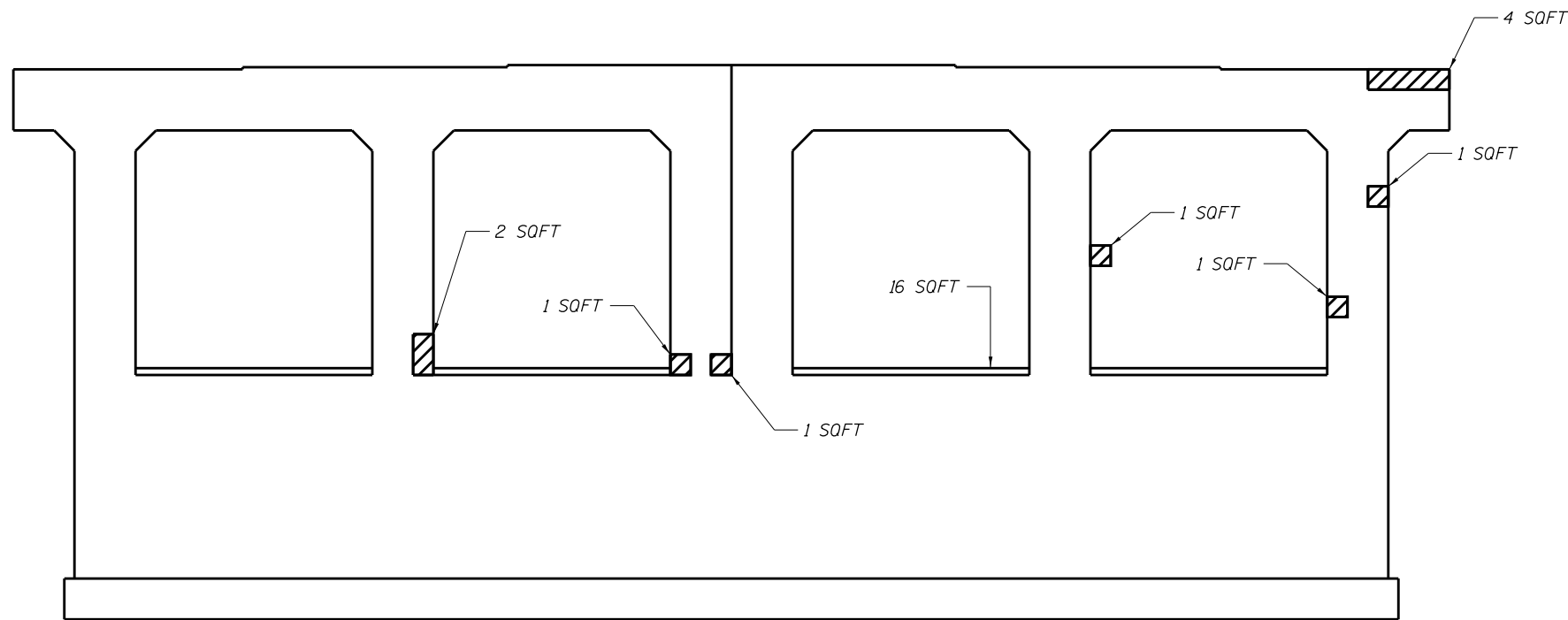
BEAM REPAIR DETAILS
79TH STREET OVER CSX RAILROAD (SN 016-0519)

SHEET 53 OF 55 SHEETS

| F.A.U. RTE. | SECTION | COUNTY | TOTAL SHEETS | SHEET NO. |
|---------------------------|--------------|--------|--------------|-----------|
| 1548 | 2018-010-B-R | COOK | 10 | 7 |
| CONTRACT NO. 62G32 | | | | |
| ILLINOIS FED. AID PROJECT | | | | |



PIER 1 EAST FACE



PIER 1 WEST FACE

Note:
Area to be repaired will be determined in the field by the Engineer.

BILL OF MATERIAL

| Item | Unit | Total |
|---|---------|-------|
| Structural Repair of Concrete (Depth Equal to or Less Than 5") | Sq. Ft. | 35 |

MODEL: Default
FILE NAME: p:\w\11084EBID\INTEG\Illinois.gov\PWIDOT\Documents\DOT Offices\District 1\Projects\128318\CADData\Design\128318-erepair.dgn
8/15/2018 8:34:15 AM

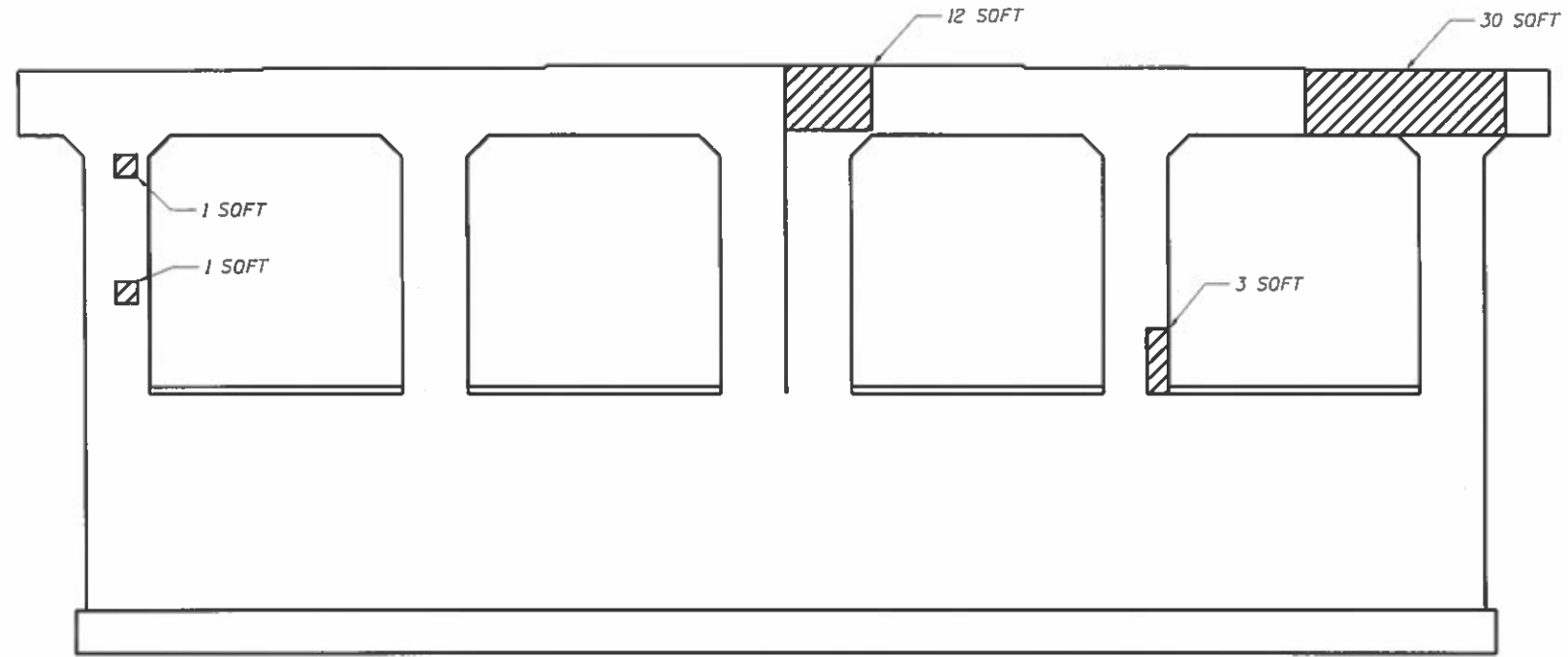
| | | |
|------------|--|-----------------|
| DESIGNED - | EXAMINED _____ | DATE - _____ |
| CHECKED - | ACTING ENGINEER OF STRUCTURAL SERVICES | |
| DRAWN - | PASSED _____ | REVISED - _____ |
| CHECKED - | ENGINEER OF BRIDGES AND STRUCTURES | REVISED - _____ |

STATE OF ILLINOIS
DEPARTMENT OF TRANSPORTATION

PIER 1 REPAIR DETAILS
79TH STREET OVER CSX RAILROAD (SN 016-0519)

SHEET S4 OF S5 SHEETS

| | | | | |
|-------------|--------------|---------------------------|--------------------|-----------|
| F.A.U. RTE. | SECTION | COUNTY | TOTAL SHEETS | SHEET NO. |
| 1548 | 2018-010-B-R | COOK | 10 | 8 |
| | | | CONTRACT NO. 62G32 | |
| | | ILLINOIS FED. AID PROJECT | | |



PIER 2 WEST FACE

Note:
Area to be repaired will be determined in the field by the Engineer.

BILL OF MATERIAL

| Item | Unit | Total |
|---|---------|-------|
| Structural Repair of Concrete (Depth Equal to or Less Than 5") | Sq. Ft. | 47 |

MODEL: Default
 FILE NAME: p:\w\10848\BID\INTEG\Illinois.gov\PVIDOT\Docume\15151DOT Office\15151DOT Office\15151DOT Office\CADD\128318-C\repair.dgn
 9/20/2018 9:49:08 AM

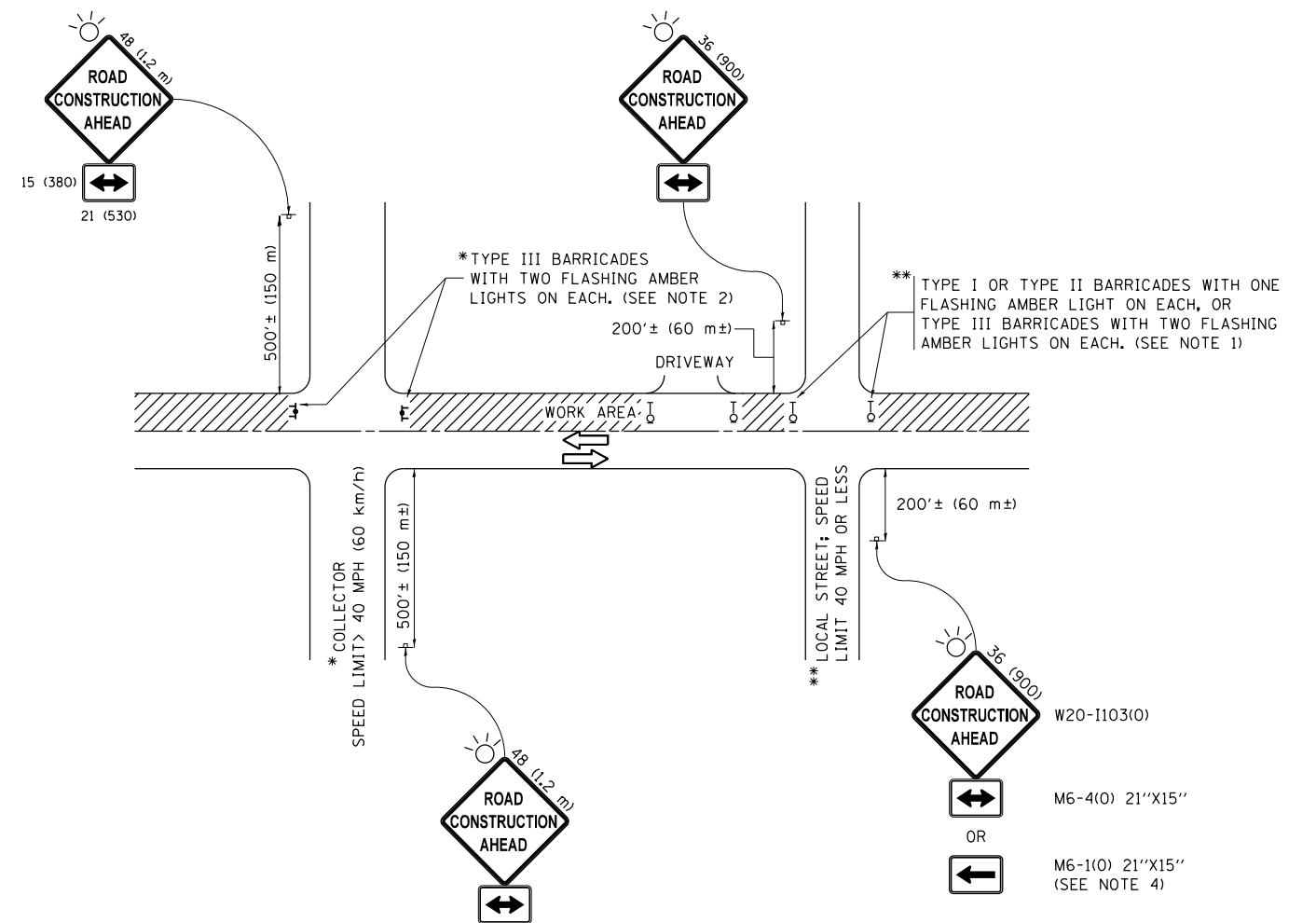
| | | |
|-----------------------|--|-----------------|
| DESIGNED - RAD | EXAMINED _____ | DATE - _____ |
| CHECKED - CDK | ACTING ENGINEER OF STRUCTURAL SERVICES | REVISED - _____ |
| DRAWN - _____ | PASSED _____ | REVISED - _____ |
| CHECKED - _____ | ENGINEER OF BRIDGES AND STRUCTURES | |

STATE OF ILLINOIS
DEPARTMENT OF TRANSPORTATION

PIER 2 REPAIR DETAILS
79TH STREET OVER CSX RAILROAD (SN 016-0519)

SHEET 55 OF 55 SHEETS

| F.A.U. RTE. | SECTION | COUNTY | TOTAL SHEETS | SHEET NO. |
|---------------------------|--------------|--------|--------------|-----------|
| 1548 | 2018-010-B-R | COOK | 10 | 9 |
| CONTRACT NO. 62G32 | | | | |
| ILLINOIS FED. AID PROJECT | | | | |



NOTES:

1. SIDE ROAD WITH A SPEED LIMIT OF 40 MPH (60 km/h) OR LESS AS SHOWN ON THE DRAWING AND AS DIRECTED BY THE ENGINEER:
 - a) ONE "ROAD CONSTRUCTION AHEAD" SIGN 36 x 36 (900x900) WITH A FLASHER MOUNTED ON IT APPROXIMATELY 200' (60 m) IN ADVANCE OF THE MAIN ROUTE.
 - b) THE CLOSED PORTION OF THE MAIN ROUTE SHALL BE PROTECTED BY BLOCKING WITH TYPE I, TYPE II OR TYPE III BARRICADES, 1/3 OF THE CROSS SECTION OF THE CLOSED PORTION.
2. SIDE ROAD WITH A SPEED LIMIT GREATER THAN 40 MPH (60 km/h) AS SHOWN ON THE DRAWING AND AS DIRECTED BY THE ENGINEER:
 - a) ONE "ROAD CONSTRUCTION AHEAD" SIGN 48 x 48 (1.2 m x 1.2 m) WITH A FLASHER MOUNTED ON IT APPROXIMATELY 500' (150 m) IN ADVANCE OF THE MAIN ROUTE.
 - b) THE CLOSED PORTION OF THE MAIN ROUTE SHALL BE PROTECTED BY BLOCKING WITH TYPE III BARRICADES, 1/2 OF THE CROSS SECTION OF THE CLOSED PORTION.
3. CONES MAY BE SUBSTITUTED FOR BARRICADES OR DRUMS AT HALF THE SPACING DURING DAY OPERATIONS. CONES SHALL BE A MINIMUM OF 28 (710) IN HEIGHT.
4. WHEN THE SIDE ROAD LIES BETWEEN THE BEGINNING OF THE MAINLINE SIGNING AND THE WORK ZONE, A SINGLE HEADED ARROW (M6-1) SHALL BE USED IN LIEU OF THE DOUBLE HEADED ARROW (M6-4).
5. WHEN WORK IS BEING PERFORMED ON A SIDE ROAD OR DRIVEWAY, FOLLOW THE APPLICABLE STANDARD(S). THE DIRECTIONAL ARROW (M6-1 OR M6-4) SHALL BE COVERED OR REMOVED WHEN NO LONGER CONSISTENT WITH THE TRAFFIC CONTROL SET-UP.
6. ADVANCE WARNING SIGNS ARE TO BE OMITTED ON DRIVEWAYS UNLESS OTHERWISE SPECIFIED IN THE PLANS OR BY THE ENGINEER.
7. THE TRAFFIC CONTROL AND PROTECTION FOR SIDE ROADS, INTERSECTIONS, AND DRIVEWAYS SHALL BE INCLUDED IN THE COST OF SPECIFIED TRAFFIC CONTROL STANDARDS OR ITEMS.

All dimensions are in inches (millimeters) unless otherwise shown.

| | | | |
|--|------------------------------|-------------------|---------------------------------|
| FILE NAME = | USER NAME = condrevate | DESIGNED - L.H.A. | REVISED - A. HOUSEH 10-15-96 |
| p:\11\084EBIDINTEG\Illinois.gov\PIWIDOT\Documents\IDOT Offices\District 1\Projects\DI283\Drawings\Design\DistStd.dgn | | | REVISED - T. RAMMACHER 01-06-00 |
| Default | PLOT SCALE = 100.0000' / in. | CHECKED - | REVISED - A. SCHUETZE 07-01-13 |
| | PLOT DATE = 8/15/2018 | DATE - 06-89 | REVISED - A. SCHUETZE 09-15-16 |

**STATE OF ILLINOIS
DEPARTMENT OF TRANSPORTATION**

**TRAFFIC CONTROL AND PROTECTION FOR
SIDE ROADS, INTERSECTIONS, AND DRIVEWAYS**

SCALE: NONE SHEET 1 OF 1 SHEETS STA. TO STA.

| F.A.U. RTE. | SECTION | COUNTY | TOTAL SHEETS | SHEET NO. |
|---------------------------|--------------|--------|---------------------------|-----------|
| 1548 | 2018-010-B-R | COOK | 10 | 10 |
| TC-10 | | | CONTRACT NO. 62G32 | |
| ILLINOIS FED. AID PROJECT | | | | |