

047

INDEX OF SHEETS 11-09-2018 LETTING ITEM 047

- 1. COVER SHEET
- 2. GENERAL NOTES
- 3. SUMMARY OF QUANTITIES
- 4. TYPICAL SECTION
- 5 - 7. SCHEDULES - SOUTHBOUND
- 8 - 10. SCHEDULES - NORTHBOUND
- 11 - 12. CLASS B PATCHING DETAILS

STANDARDS

- 000001-06 STANDARD SYMBOLS, ABBREVIATIONS AND PATTERNS
- 001001-02 AREAS OF REINFORCEMENT BARS
- 001006 DECIMAL OF AN INCH AND OF A FOOT
- 701001-02 OFF-ROAD OPERATIONS 2L, 2W, MORE THAN 15' (4.5 m) AWAY
- 701006-05 OFF-ROAD OPERATIONS 2L, 2W, 15' (4.5 m) TO 24" (600 mm) FROM PAVEMENT EDGE
- 701301-04 LANE CLOSURE, 2L, 2W, SHORT TIME OPERATIONS
- 701336-06 LANE CLOSURE, 2L, 2W, WORK AREAS IN SERIES, FOR SPEEDS \geq 45 MPH
- 701901-07 TRAFFIC CONTROL DEVICES

STATE OF ILLINOIS
DEPARTMENT OF TRANSPORTATION

**PROPOSED
HIGHWAY PLANS**

F.A.S. ROUTE 294 (O.R. 66)
SECTION (12,13)PP
PAVEMENT PATCHING
LIVINGSTON COUNTY

F.A.S. RTE.	SECTION	COUNTY	TOTAL SHEETS	SHEET NO.
294	(12,13)PP	LIVINGSTON	12	1
		ILLINOIS	CONTRACT NO. 66H31	



FUNCTIONAL CLASSIFICATION
RURAL MAJOR COLLECTOR
F.A.S. ROUTE 294 (O.R. 66)
2014 ADT 2750
P.V. 91.3% S.U. 5.45% M.U. 3.27%

STATE OF ILLINOIS
DEPARTMENT OF TRANSPORTATION

SUBMITTED *9/20/18* 20 *18*

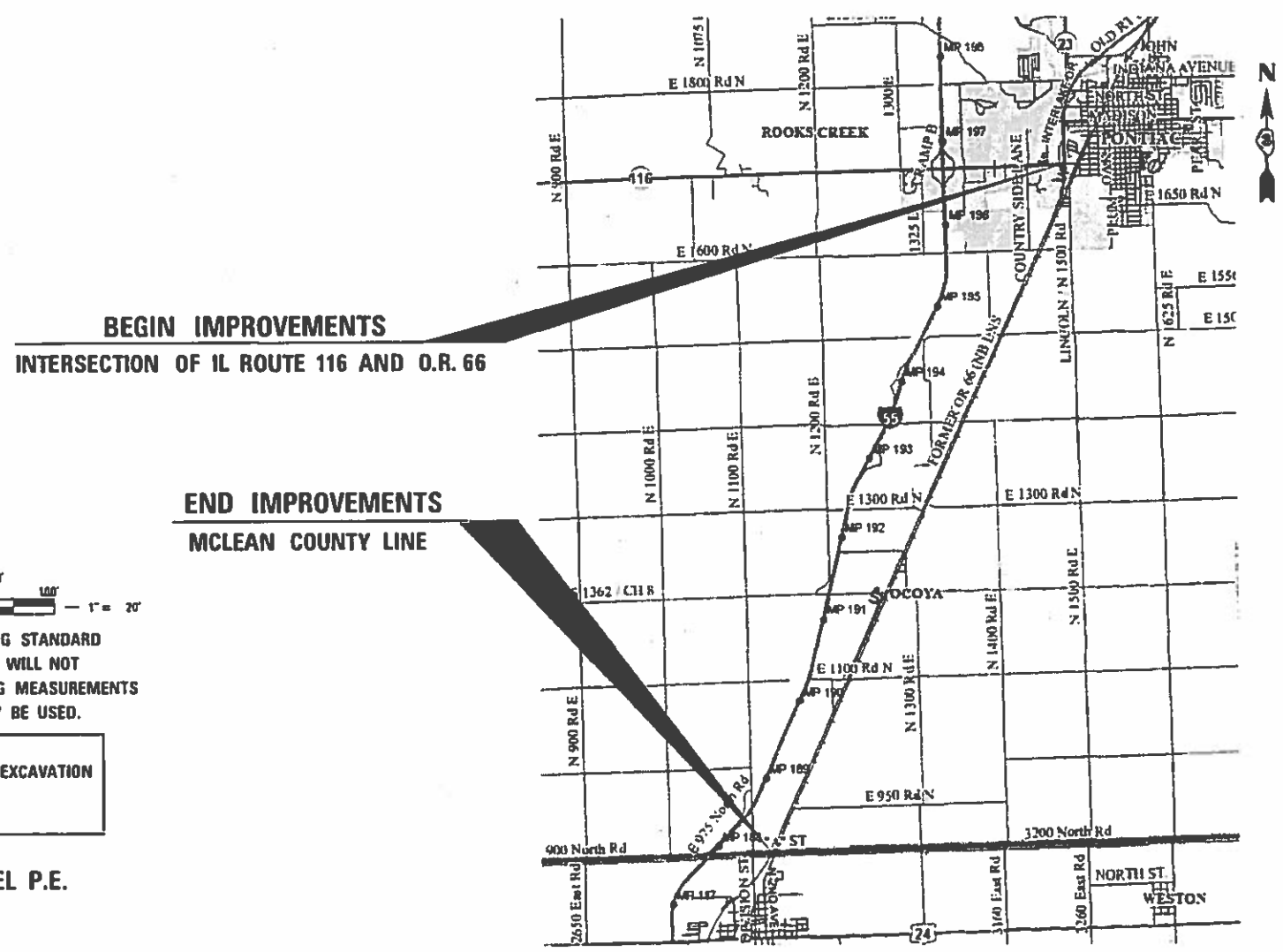
Karin [Signature]
REGIONAL ENGINEER

[Signature]
ENGINEER OF DESIGN AND ENVIRONMENT

[Signature]
DIRECTOR OF HIGHWAYS PROJECT IMPLEMENTATION

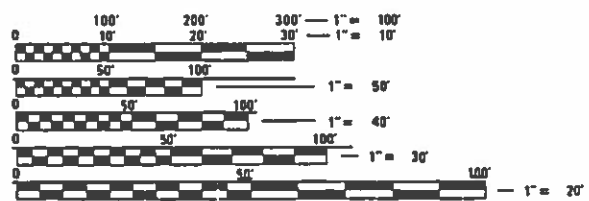
**PRINTED BY THE AUTHORITY
OF THE STATE OF ILLINOIS**

C-93-068-17



BEGIN IMPROVEMENTS
INTERSECTION OF IL ROUTE 116 AND O.R. 66

END IMPROVEMENTS
MCLEAN COUNTY LINE



FULL SIZE PLANS HAVE BEEN PREPARED USING STANDARD ENGINEERING SCALES. REDUCED SIZED PLANS WILL NOT CONFORM TO STANDARD SCALES. IN MAKING MEASUREMENTS ON REDUCED PLANS, THE ABOVE SCALES MAY BE USED.

J.U.L.I.E.
JOINT UTILITY LOCATION INFORMATION FOR EXCAVATION
1-800-892-0123
OR 811

PROJECT ENGINEER: JOE KANNEL P.E.
UNIT CHIEF: RON WOODSHANK
DISTRICT 3 NO. (815) 434-6131
CONTRACT NO. 66H31

GROSS LENGTH = 47,150 FT. = 8.9 MILE
NET LENGTH = 1,368 FT. = 0.26 MILE

GENERAL NOTES

PLAN DIMENSIONS AND DETAILS RELATIVE TO EXISTING PLANS ARE SUBJECT TO NOMINAL CONSTRUCTION VARIATIONS. THE CONTRACTOR SHALL FIELD VERIFY EXISTING DIMENSIONS AND DETAILS AFFECTING NEW CONSTRUCTION AND MAKE NECESSARY APPROVED ADJUSTMENTS PRIOR TO CONSTRUCTION OR ORDERING OF MATERIALS. SUCH VARIATIONS SHALL NOT BE CAUSE FOR ADDITIONAL COMPENSATION FOR A CHANGE IN SCOPE OF WORK; HOWEVER, THE CONTRACTOR WILL BE PAID FOR THE QUANTITY ACTUALLY FURNISHED AT THE UNIT PRICE BID FOR THE WORK.

ALL EXCAVATED MATERIAL, WHICH INCLUDES DIGGING OR GRADING OF ANY SOIL OR FILL MATERIAL, WITH THE EXCEPTION OF AGGREGATE FILLS, MUST BE INCORPORATED WITHIN THE IDOT RIGHT OF WAY DUE TO ENVIRONMENTAL DOCUMENTATION REQUIREMENTS.

ANY REFERENCE TO A STANDARD IN THESE PLANS SHALL BE INTERPRETED TO MEAN THE EDITION AS INDICATED BY THE SUBNUMBER SHOWN IN THE LIST OF STANDARDS OR THE COPY INCLUDED IN THESE PLANS.

THE CONTRACTOR SHALL CONTACT JULIE AT LEAST 48 HOURS PRIOR TO EXCAVATION TO DETERMINE WHICH UTILITIES ARE IN THE AREA.

COMMITMENTS

THE RESIDENT SHALL CONTACT THE DISTRICT 3 ENVIRONMENTAL STUDIES CHIEF PRIOR TO CONSTRUCTION FOR COMMITMENTS MADE FOR THE CULTURAL CLEARANCES OBTAINED ON THIS PROJECT RELATED TO THE PATCHING OF THE HISTORIC PAVEMENT OF OLD ROUTE US 66.

STATE OF ILLINOIS
DEPARTMENT OF TRANSPORTATION
DISTRICT THREE
AS BUILT INFORMATION

SUPERVISING CONSTRUCTION FIELD ENGINEER

RESIDENT ENGINEER / TECHNICIAN

START & END DATES
OF CONSTRUCTION: _____

INSPECTORS: _____

STATE OF ILLINOIS
DEPARTMENT OF TRANSPORTATION
DISTRICT THREE

REVIEWED BY: *Tom Rank*
DISTRICT STUDIES & PLANS ENGINEER

DATE: 8-20-18

EXAMINED BY: *[Signature]*
DISTRICT CONSTRUCTION ENGINEER

Michael A. Short
DISTRICT MATERIALS ENGINEER

Jim Whaley
DISTRICT OPERATIONS ENGINEER

FILE NAME =	USER NAME = woodshankr1	DESIGNED - RW	REVISED -
pw:\IL084EBID\INTEG\illinois.gov\PIWIDOT\Documents\IDOT Offices\District 3\Projects\0366\Drawings\66H31-RW.dgn		CHECKED - EP	REVISED -
Default	PLOT DATE = 8/8/2018	DATE - 4/7/2017	REVISED -

STATE OF ILLINOIS
DEPARTMENT OF TRANSPORTATION

GENERAL NOTES

SCALE: SHEET 1 OF 1 SHEETS STA. TO STA.

F.A.S. RTE.	SECTION	COUNTY	TOTAL SHEETS	SHEET NO.
294	(12,13)PP	LIVINGSTON	12	2
				CONTRACT NO. 66H31
[ILLINOIS] FED. AID PROJECT				

CODE NO.	ITEM	UNIT	TOTAL QUANTITY	CONSTRUCTION CODE	
				CONTRACT MAINTENANCE	
				100% STATE	
				ROADWAY	
				0005	
				RURAL	
40600290	BITUMINOUS MATERIALS (TACK COAT)	POUND	115		115
44200050	WELDED WIRE REINFORCEMENT	SQ YD	411		411
44201299	DOWEL BARS 1 1/2"	EACH	4720		4720
44201681	CLASS D PATCHES, TYPE I, 3 INCH	SQ YD	12		12
44201682	CLASS D PATCHES, TYPE II, 3 INCH	SQ YD	252		252
44213200	SAW CUTS	FOOT	11890		11890
44213204	TIE BARS 3/4"	EACH	42		42
67100100	MOBILIZATION	LSUM	1		1
70100600	TRAFFIC CONTROL AND PROTECTION, STANDARD 701336	LSUM	1		1
X0556100	PARTIAL DEPTH PATCHING (SPECIAL)	SQ YD	19		19
X4420682	CLASS B PATCHES, TYPE II, 10 INCH (SPECIAL)	SQ YD	1868		1868
X4420683	CLASS B PATCHES, TYPE III, 10 INCH (SPECIAL)	SQ YD	155		155
X4420684	CLASS B PATCHES, TYPE IV, 10 INCH (SPECIAL)	SQ YD	114		114
Z0030850	TEMPORARY INFORMATION SIGNING	SQ FT	42		42

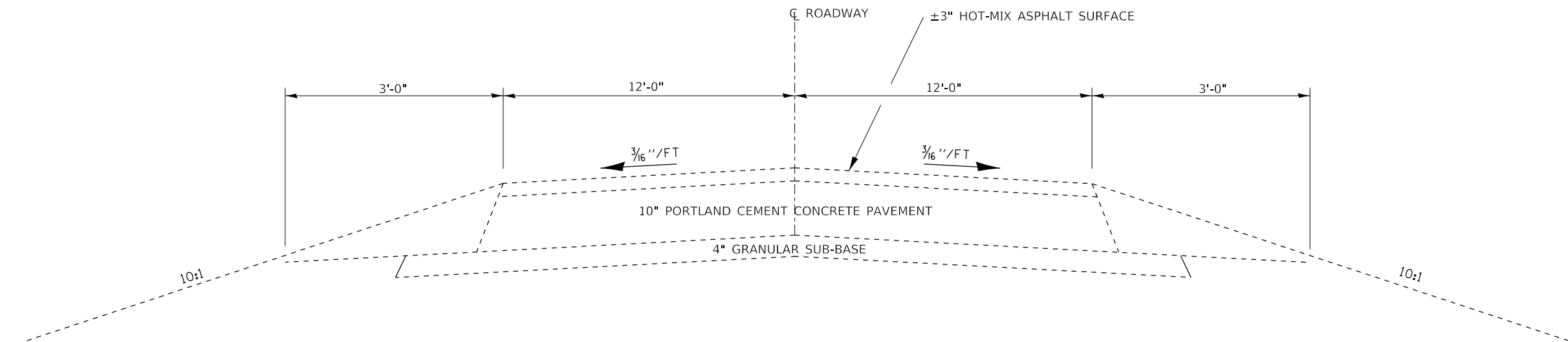
FILE NAME =	USER NAME = woodshankr1	DESIGNED - RW	REVISED -
p:\IL\084EBIDINTEG.illinois.gov\PI\DOT\Documents\DOT Offices\District 3\Projects\0366\DRAWING\66H31-RW\01.dgn		CHECKED - EP	REVISED -
Default	PLOT DATE = 8/8/2018	DATE - 4/7/2017	REVISED -

**STATE OF ILLINOIS
DEPARTMENT OF TRANSPORTATION**

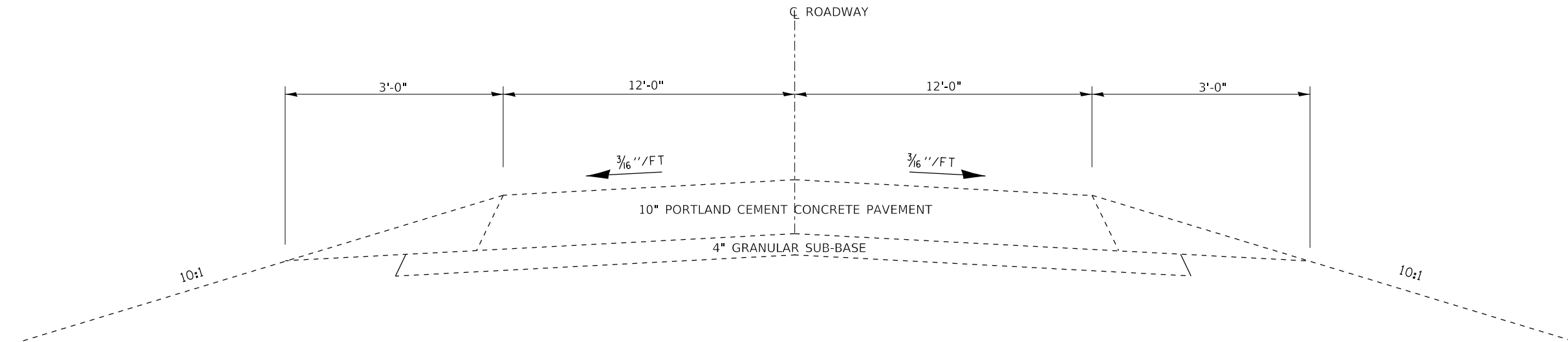
SUMMARY OF QUANTITIES

SCALE: SHEET 1 OF 1 SHEETS STA. TO STA.

F.A.S. RTE.	SECTION	COUNTY	TOTAL SHEETS	SHEET NO.
294	(12,13)PP	LIVINGSTON	12	3
			CONTRACT NO. 66H31	
ILLINOIS FED. AID PROJECT				



TYPICAL SECTION
 L.M. 0.00 TO L.M. 0.60
 INTERMITTENT LOCATIONS



TYPICAL SECTION
 L.M. 0.60 TO L.M. 8.70

FILE NAME =	USER NAME = woodshankr1	DESIGNED - RW	REVISED -	STATE OF ILLINOIS DEPARTMENT OF TRANSPORTATION	TYPICAL SECTION			F.A.S. RTE.	SECTION	COUNTY	TOTAL SHEETS	SHEET NO.
pw:\IL\084EBIDINTEG.illinois.gov\PWIDOT\Documents\IDOT Offices\District 3\Projects\0366\Drawings\66H31-RW\01s.dgn	DRAWN	CHECKED - EP	REVISED -					294	(12,13)PP	LIVINGSTON	12	4
Default	PLOT SCALE = 100:0.0000 ' / in.	DATE - 4/7/2017	REVISED -		SCALE: SHEET 1 OF 1 SHEETS STA. TO STA.			CONTRACT NO. 66H31				
	PLOT DATE = 8/8/2018	DATE - 4/7/2017	REVISED -		ILLINOIS FED. AID PROJECT							

**PATCHING SCHEDULE
SOUTHBOUND LANE**

LOCATION	PATCH LENGTH	PATCH WIDTH	CLASS B (SPECIAL)			CLASS D		BITUMINOUS MATERIALS (TACK COAT)	DOWEL BARS 1 1/2"	SAW CUTS	WELDED WIRE REINF.	TIE BARS 3/4"	
			TYPE II 10"	TYPE III 10"	TYPE IV 10"	TYPE I 3"	TYPE II 3"						
LOG MILE	(FT)	(FT)	SQ YD	SQ YD	SQ YD	SQ YD	SQ YD	POUND	EACH	FOOT	SQ YD	EACH	
0.0000	INTERSECTION IL 116 AND OLD US 66												
0.0232	6	24					16	7					
0.0393	6	24					16	7					
0.0558	6	24					16	7					
0.0768	6	24					16	7					
0.0953	6	24					16	7					
0.1202	6	24					16	7					
0.1504	6	24					16	7					
0.1583	6	24					16	7					
0.1805	6	24					16	7					
0.2129	6	24					16	7					
0.2223	6	24					16	7					
0.3093	6	22					15	7					
0.4289	6	19					13	6					
0.4392	6	12					8	4					
0.4459	6	12					8	4					
0.4648	6	12					8	4					
0.5604	6	12					8	4					
0.6704	4	12	5						20	44			
0.6751	3	2					1						
0.7130	9	12	12						20	54			
0.7327	6	12	8						20	48			
0.7519	4	12	5						20	44			
0.8048	4	12	5						20	44			
0.8361	3	6					2						
0.8669	12	12		16					20	60	16		
0.9446	9	12	12						20	54			
0.9638	8	12	11						20	52			
1.0760	8	12	11						20	52			
1.1598	4	12	5						20	44			
1.1932	8	12					8						
1.4212	7	12	9						20	50			
1.4355	6	12	8						20	48			
1.5636	4	12	5						20	44			
1.5828	4	12	5						20	44			
1.5921	4	12	5						20	44			
1.6304	9	12	12						20	54			
1.6684	8	12	11						20	52			
1.7060	4	12	5						20	44			
1.9422	4	12	5						20	44			
2.0672	6	12	8						20	48			
2.1049	14	12		19					20	64	19		
2.1155	4	12	5						20	44			
2.2360	6	12	8						20	48			
2.2547	6	12	8						20	48			
2.2642	4	12	5						20	44			
2.2688	4	12	5						20	44			
2.2736	8	12	11						20	52			
2.3875	2	4					1	0.5					
2.4064	8	12	11						20	52			
SUBTOTALS	296	713	200	35			4	244	106.5	560	1364	35	0

**PATCHING SCHEDULE
SOUTHBOUND LANE**

LOCATION	PATCH LENGTH	PATCH WIDTH	CLASS B (SPECIAL)			CLASS D		BITUMINOUS MATERIALS (TACK COAT)	DOWEL BARS 1 1/2"	SAW CUTS	WELDED WIRE REINF.	TIE BARS 3/4"
			TYPE II 10"	TYPE III 10"	TYPE IV 10"	TYPE II 3"	TYPE II 3"					
LOG MILE	(FT)	(FT)	SQ YD	SQ YD	SQ YD	SQ YD	SQ YD	POUND	EACH	FOOT	SQ YD	EACH
2.4823	11	12	15						20	58		
2.4927	4	12	5						20	44		
2.5202	4	12	5						20	44		
2.5581	8	12	11						20	52		
2.5768	12	12		16					20	60	16	
2.6142	12	12		16					20	60	16	
2.6527	2	6				1		1				
2.7850	9	12	12						20	54		
2.8038	12	12		16					20	60	16	
2.8232	12	12		16					20	60	16	
2.8333	4	12	5						20	44		
2.9555	8	12	11						20	52		
2.9745	4	12	5						20	44		
3.2017	5	12	7						20	46		
3.3343	11	12	15						20	58		
3.4839	6	12	8						20	48		
3.5223	6	12	8						20	48		
3.5601	9	12	12						20	54		
3.5782	9	12	12						20	54		
3.6357	6	12	8						20	48		
3.7309	7	12	9						20	50		
3.8063	9	12	12						20	54		
3.8826	17	12		23					20	70	23	
3.9015	2	4				1		0.5	20			
3.9399	12	12		16					20	60	16	
3.9581	6	12	8						20	48		
4.0149	6	12	8						20	48		
4.0334	6	12	8						20	48		
4.2428	9	12	12						20	54		
4.5915	6	12					8	4				
4.6631	12	12		16					20	60	16	
4.7073	8	12	11						20	52		
4.7286	4	12	5						20	44		
4.7388	5	12	7						20	46		
4.7797	10	12	13						20	56		
4.8142	9	12	12						20	54		
4.8897	3	12				4		2				
4.8975	4	12	5						20	44		
5.0408	9	12	12						20	54		
5.0731	4	12	5						20	44		
5.0981	2	10				2		1				
5.1177	7	12	9						20	50		
5.2349	6	12	8						20	48		
5.3716	9	12	12						20	54		
5.4048	4	12	5						20	44		
5.4103	9	12	12						20	54		
5.4296	6	12	8						20	48		
5.5034	6	12	8						20	48		
5.5321	9	12	12						20	54		
5.5471	6	12	8						20	48		
SUBTOTALS	366	584	348	119		8	8	8.5	920	2322	119	

**PATCHING SCHEDULE
SOUTHBOUND LANE**

LOCATION	PATCH LENGTH	PATCH WIDTH	CLASS B (SPECIAL)			CLASS D		BITUMINOUS MATERIALS (TACK COAT)	DOWEL BARS 1 1/2"	SAW CUTS	WELDED WIRE REINF.	TIE BARS 3/4"
			TYPE II 10"	TYPE III 10"	TYPE IV 10"	TYPE II 3"	TYPE II 3"					
LOG MILE	(FT)	(FT)	SQ YD	SQ YD	SQ YD	SQ YD	SQ YD	POUND	EACH	FOOT	SQ YD	EACH
5.5662	8	12	11						20	52		
5.6237	6	12	8						20	48		
5.6512	8	12	11						20	52		
5.7164	14	12		19					20	64	19	
5.7350	9	12	12						20	54		
5.8675	7	12	9						20	50		
5.8852	9	12	12						20	54		
5.9790	8	12	11						20	52		
6.4458	11	12	15						20	58		
6.5773	6	12	8						20	48		
6.5969	8	12	11						20	52		
6.6713	9	12	12						20	54		
6.7279	4	12	5						20	44		
6.7364	4	12	5						20	44		
6.8030	8	12	11						20	52		
6.8220	12	12		16					20	60	16	
6.8408	13	12		17					20	62	17	
6.9174	8	12	11						20	52		
6.9491	6	12	8						20	48		
6.9620	4	12	5						20	44		
7.1081	6	12	8						20	48		
7.3540	8	12	11						20	52		
7.3915	9	12	12						20	54		
7.4488	10	12	13						20	56		
7.4858	4	12	5						20	44		
7.5054	9	12	12						20	54		
7.5238	9	12	12						20	54		
7.5621	6	12	8						20	48		
7.5809	9	12	12						20	54		
7.8087	8	12	11						20	52		
7.8654	6	12	8						20	48		
7.8844	11	12	15						20	58		
7.9402	9	12	12						20	54		
8.0346	6	12	8						20	48		
8.1656	9	12	12						20	54		
8.1847	9	12	12						20	54		
8.2960	8	12	11						20	52		
8.2998	4	12	5						0	0		
8.3147	8	12	11						20	52		
8.5844	6	12	8						20	48		
8.6229	11	12	15						20	58		
8.6990	6	12	8						20	48		
8.9286	17	12		23					20	70	23	
8.9536	MCLEAN/LIVINGSTON COUNTY LINE											
SUBTOTALS	350	516	394	75					840	2204	75	

**PATCHING SCHEDULE
SOUTHBOUND LANE TOTALS**

CLASS B (SPECIAL)			CLASS D		BITUMINOUS MATERIALS (TACK COAT)	DOWEL BARS 1 1/2"	SAW CUTS	WELDED WIRE REINF.	TIE BARS 3/4"
TYPE II 10"	TYPE III 10"	TYPE IV 10"	TYPE II 3"	TYPE II 3"					
SQ YD	SQ YD	SQ YD	SQ YD	SQ YD	POUND	EACH	FOOT	SQ YD	EACH
942	229		12	252	115	2320	5890	229	

**PATCHING SCHEDULE
NORTHBOUND LANE**

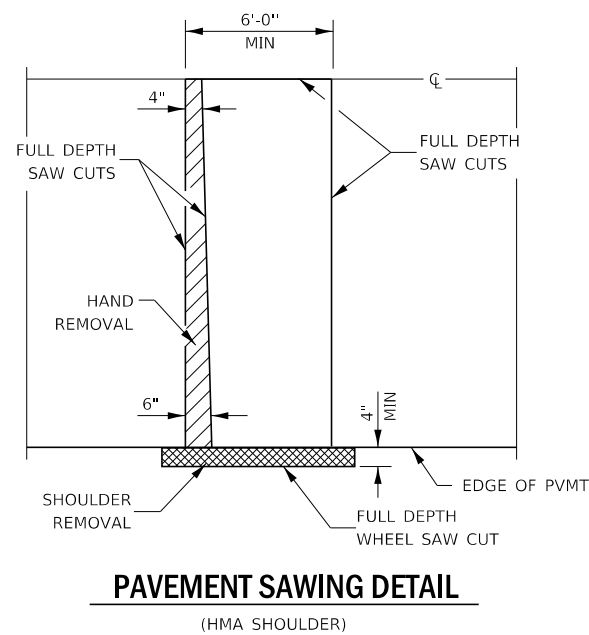
LOCATION	PATCH LENGTH	PATCH WIDTH	CLASS B (SPECIAL)			PARTIAL DEPTH PATCHING (SPECIAL)	DOWEL BARS 1 1/2"	SAW CUTS	WELDED WIRE REINF.	TIE BARS 3/4"
			TYPE II 10"	TYPE III 10"	TYPE IV 10"					
LOG MILE	(FT)	(FT)	SQ YD	SQ YD	SQ YD	SQ YD	EACH	FOOT	SQ YD	EACH
5.5027	6	12	8				20	48		
5.4678	6	12	8				20	48		
5.4481	6	12	8				20	48		
5.3708	6	12	8				20	48		
5.2148	8	12	11				20	52		
5.1754	6	12	8				20	48		
5.1562	6	12	8				20	48		
5.1170	4	12	5				20	44		
4.9086	6	12	8				20	48		
4.8973	4	12	5				20	44		
4.7062	6	12	8				20	48		
4.3981	6	12	8				20	48		
4.3563	6	12	8				20	48		
4.1957	6	12	8				20	48		
3.8832	6	12	8				20	48		
3.8688	9	12	12				20	54		
3.8255	4	6				3				
3.7119	6	12	8				20	48		
3.6930	6	12	8				20	48		
3.6461	15	12		20			20	66	20	
3.6074	6	12	8				20	48		
3.5596	6	12	8				20	48		
3.3318	33	12			44		20	102	44	16
3.3158	6	12	8				20	48		
3.2776	6	12	8				20	48		
3.1825	6	12	8				20	48		
2.9931	8	12	11				20	52		
2.9740	4	12	5				20	44		
2.8605	6	12	8				20	48		
2.7658	6	12	8				20	48		
2.7089	8	12	11				20	52		
2.6424	4	12	5				20	44		
2.6141	8	12	11				20	52		
2.5953	4	6				3				
2.5903	4	12	5				20	44		
2.5526	4	12	5				20	44		
2.4820	10	12	13				20	56		
2.4522	4	12	5				20	44		
2.2929	6	12	8				20	48		
2.1993	12	12		16			20	60	16	
2.1946	6	12	8				20	48		
2.1613	6	12	8				20	48		
2.1238	6	12	8				20	48		
2.1152	6	12	8				20	48		
2.0996	4	12	5				20	44		
2.0469	6	12	8				20	48		
2.0281	6	12	8				20	48		
1.9590	6	12	8				20	48		
1.9419	6	12	8				20	48		
1.8769	6	12	8				20	48		
SUBTOTALS	337	588	357	36	44	6	960	2386	80	16

**PATCHING SCHEDULE
NORTHBOUND LANE**

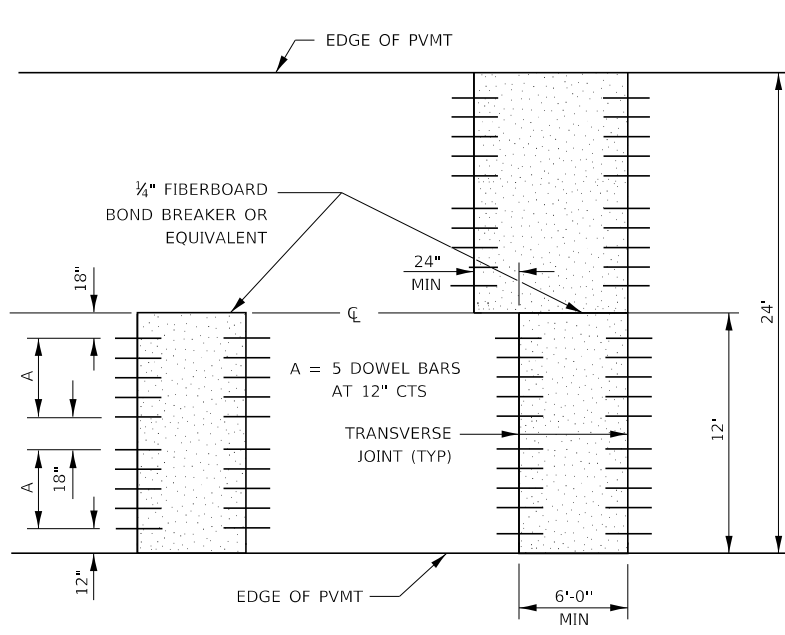
LOCATION	PATCH LENGTH	PATCH WIDTH	CLASS B (SPECIAL)			PARTIAL DEPTH PATCHING (SPECIAL)	DOWEL BARS 1 1/2"	SAW CUTS	WELDED WIRE REINF.	TIE BARS 3/4"
			TYPE II 10"	TYPE III 10"	TYPE IV 10"					
LOG MILE	(FT)	(FT)	SQ YD	SQ YD	SQ YD	SQ YD	EACH	FOOT	SQ YD	EACH
1.7199	5	6				3				
1.7058	4	6				3				
1.6234	4	12	5				20	44		
1.6104	8	12	11				20	52		
1.5633	4	12	5				20	44		
1.4206	4	12	5				20	44		
1.2307	6	12	8				20	48		
1.1923	8	12	11				20	52		
1.1169	6	12	8				20	48		
1.0785	9	12	12				20	54		
0.9295	6	12	8				20	48		
0.9205	2	4				1				
0.8911	4	12	5				20	44		
0.8669	12	12		16			20	60	16	
0.8048	4	12	5				20	44		
0.7904	4	6				3				
0.7519	4	12	5				20	44		
0.7130	9	12	12				20	54		
0.6704	4	12	5				20	44		
0.6514	4	12	5				20	44		
0.5888	11	12	15				20	58		
0.5446	4	12	5				20	44		
0.4648	6	12	8				20	48		
0.4609	8	12	11				20	52		
0.4412	8	12	11				20	52		
0.3483	7	12	9				20	50		
0.3186	4	12	5				20	44		
0.2340	6	12	8				20	48		
0.1583	6	12	8				20	48		
0.0000	INTERSECTION IL 116 AND OLD US 66									
SUBTOTALS	171	322	190	16		10	500	1212	16	

**PATCHING SCHEDULE
NORTHBOUND LANE TOTALS**

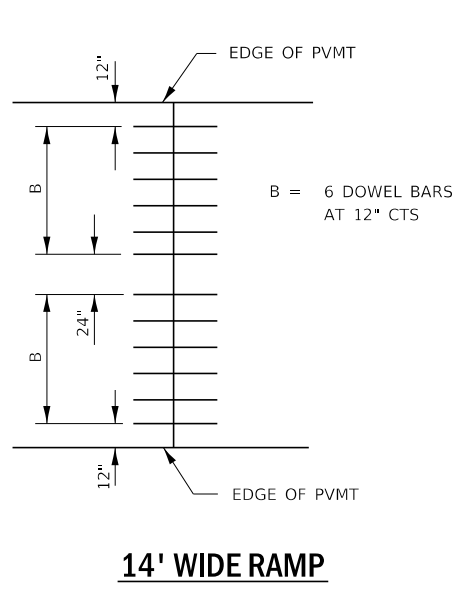
CLASS B (SPECIAL)			PARTIAL DEPTH PATCHING (SPECIAL)	DOWEL BARS 1 1/2"	SAW CUTS	WELDED WIRE REINF.	TIE BARS 3/4"
TYPE II 10"	TYPE III 10"	TYPE IV 10"					
SQ YD	SQ YD	SQ YD	SQ YD	EACH	FOOT	SQ YD	EACH
926	68	114	19	2400	6000	182	42



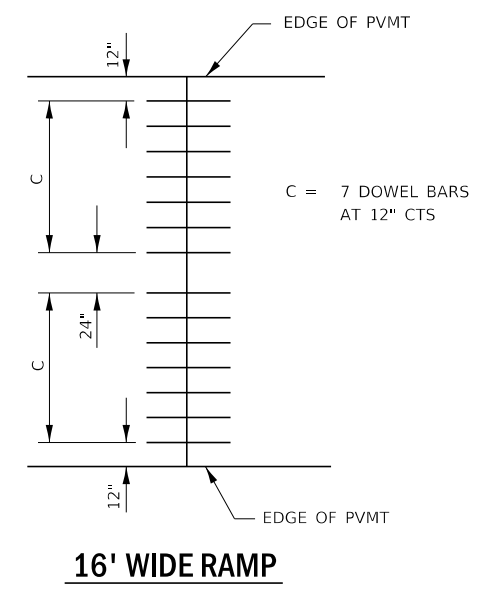
PAVEMENT SAWING DETAIL
(HMA SHOULDER)



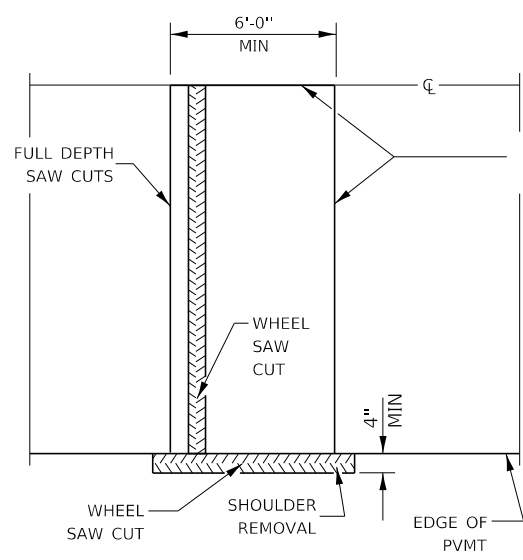
12' WIDE LANES



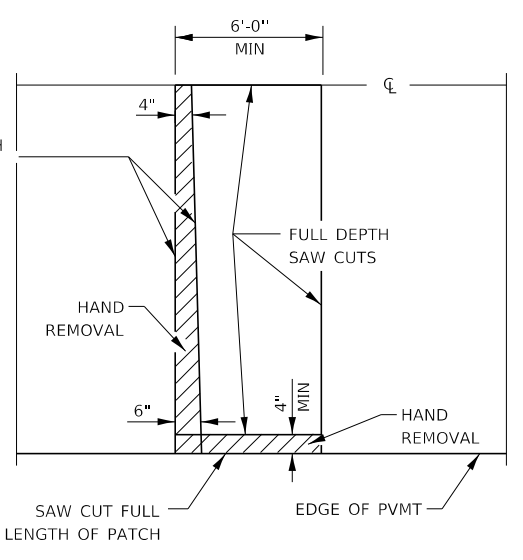
14' WIDE RAMP



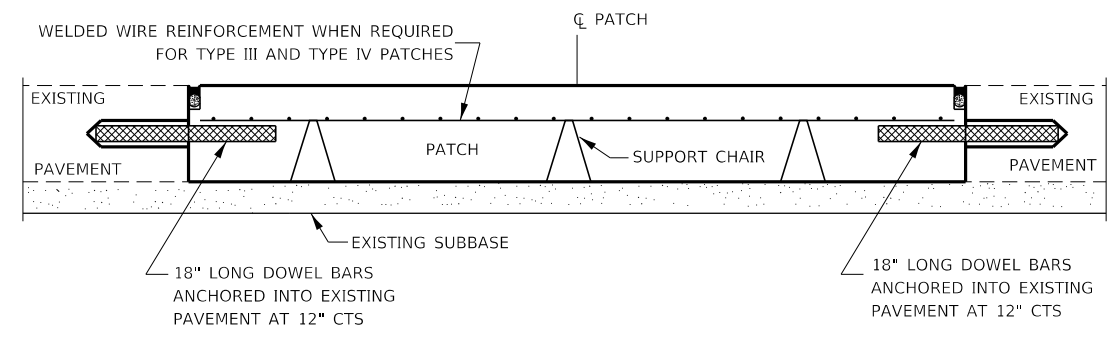
16' WIDE RAMP



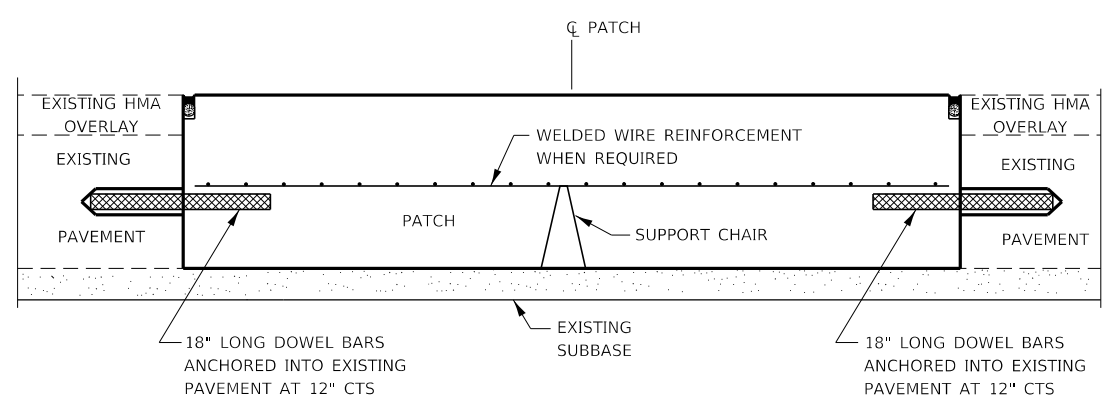
ALTERNATE SAWING DETAIL
(HMA SHOULDER)



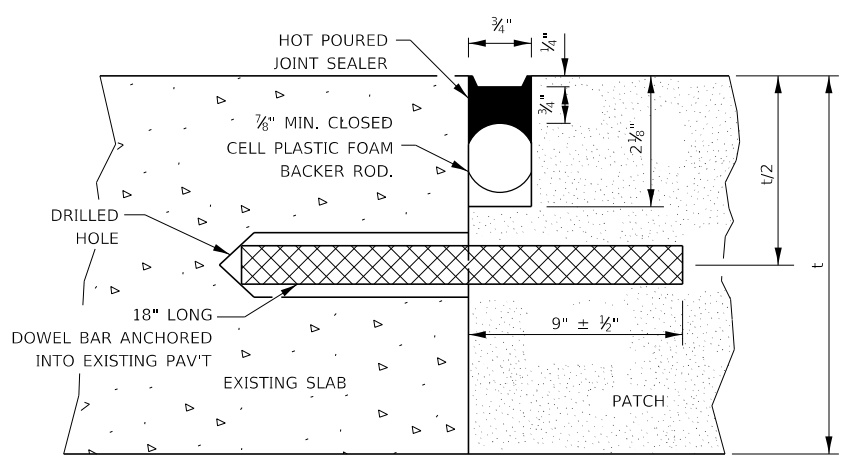
PAVEMENT SAWING DETAIL
(PCC SHOULDER)



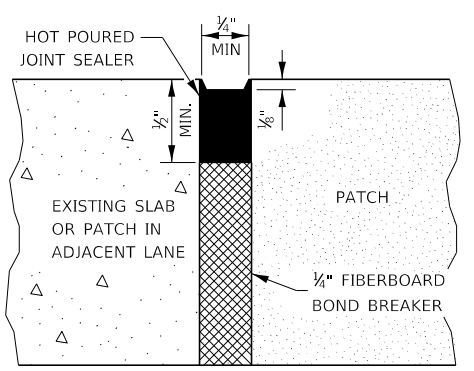
PATCHING WITHOUT HMA OVERLAY



PATCHING WITH HMA OVERLAY



TRANSVERSE JOINT

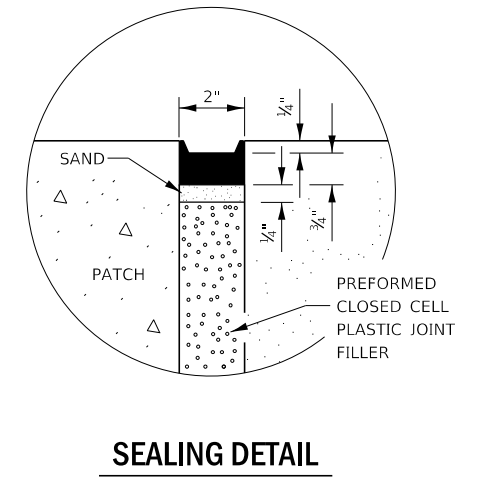
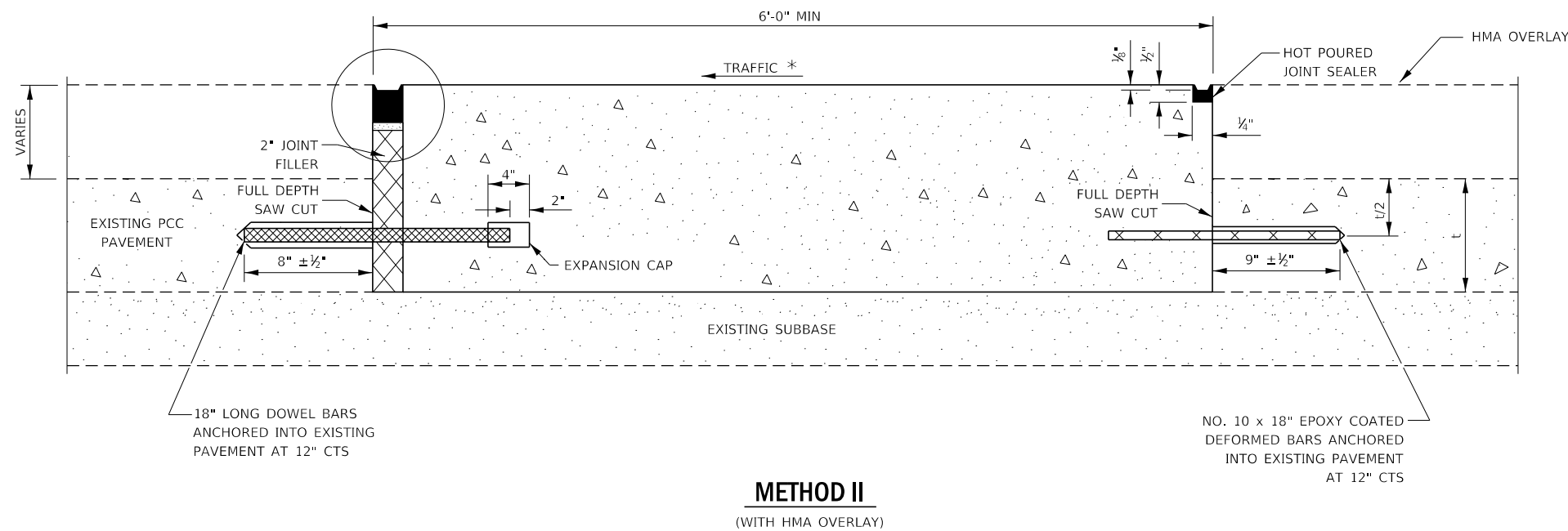
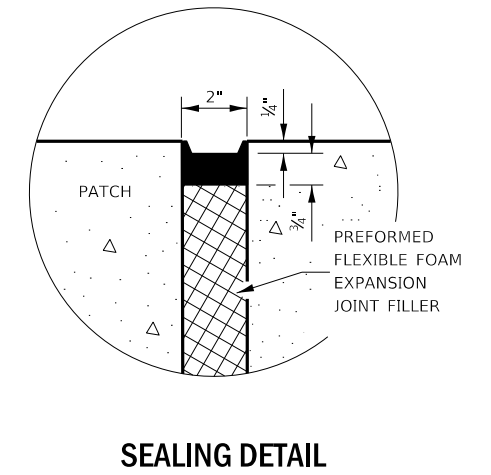
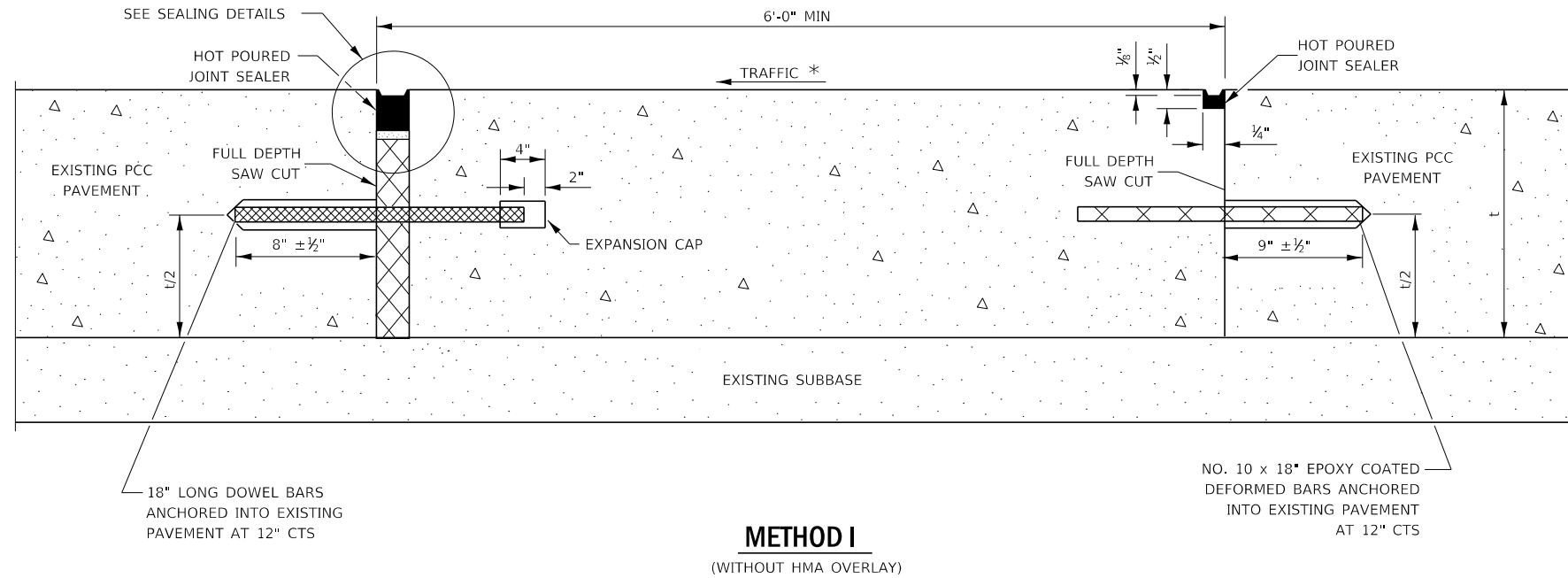


CENTERLINE JOINT

DOWEL BAR TABLE		
PAVEMENT THICKNESS	DOWEL BAR DIAMETER	HOLE DIAMETER
8" OR GREATER	1 1/2"	1 3/8"
7" THRU 7.99"	1 1/4"	1 3/16"
LESS THAN 7"	1"	1 3/16"

GENERAL NOTES

THE TRANSVERSE JOINTS FOR CLASS B PATCHES SHALL ALIGN WITH JOINTS OR CRACKS IN THE ADJACENT LANE WHENEVER POSSIBLE.
SEE STANDARD 420701 FOR DETAILS OF PAVEMENT WELDED WIRE REINFORCEMENT.



NOTE

* WHEN RE-ESTABLISHING A TRANSVERSE EXPANSION JOINT ON A TWO-WAY ROAD, REVERSE THE ORIENTATION OF THE DOWEL BARS WITH RESPECT TO TRAFFIC FOR ONE OF THE PATCHES SUCH THAT THE JOINT WILL BE CONTINUOUS ACROSS BOTH LANES.

FILE NAME =	USER NAME = woodshankr1	DESIGNED - RW	REVISED -	STATE OF ILLINOIS DEPARTMENT OF TRANSPORTATION	CLASS B PATCHING (SPECIAL) DETAILS	F.A.S. R.T.E.	SECTION	COUNTY	TOTAL SHEETS	SHEET NO.	
pw:\IL\084EBIDINTEG.illinois.gov\PWIDOT\Documents\IDOT Offices\District 3\Projects\0366\DRAWING\66H31-RW\01s.dgn	PLLOT SCALE = 100:0.0000 ' / in.	CHECKED - EP	REVISED -			294	(12,13)PP	LIVINGSTON	12	12	
Default	PLLOT DATE = 8/8/2018	DATE - 4/7/2017	REVISED -			CONTRACT NO. 66H31					
						ILLINOIS FED. AID PROJECT					