

STATE OF ILLINOIS
DEPARTMENT OF TRANSPORTATION

F.A.P. RTE.	SECTION	COUNTY	TOTAL SHEETS	SHEET NO.
68	(37,101)CG	LIVINGSTON	11	1
		ILLINOIS	CONTRACT NO. 66J49	

INDEX OF SHEETS

1. COVER SHEET
2. GENERAL NOTES
- 3-4. SUMMARY OF QUANTITIES
- 5-6. TYPICAL SECTIONS
7. SCHEDULES
8. TRAFFIC CONTROL DETAILS
- 9-10. ROADWAY PLAN
11. DETAILS

STANDARDS

000001-06	STANDARD SYMBOLS, ABBREVIATIONS AND PATTERNS
001001-02	AREAS OF REINFORCEMENT BARS
001006	DECIMAL OF AN INCH AND OF A FOOT
606001-07	CONCRETE CURB TYPE B AND COMBINATION CONCRETE CURB AND GUTTER
630001-12	STEEL PLATE BEAM GUARDRAIL
631031-15	TRAFFIC BARRIER TERMINAL, TYPE 6
701001-02	OFF-ROAD OPERATIONS 2L, 2W, MORE THAN 15' (4.5 m) AWAY
701006-05	OFF-ROAD OPERATIONS 2L, 2W, 15' (4.5 m) TO 24' (600 mm) FROM PAVEMENT EDGE
701201-04	LANE CLOSURE, 2L, 2W, DAY ONLY, FOR SPEEDS \geq 45 MPH
701301-04	LANE CLOSURE, 2L, 2W, SHORT TIME OPERATIONS
782001-01	PRISMATIC CURB REFLECTORS
782006	GUARDRAIL AND BARRIER WALL REFLECTOR MOUNTING DETAILS
701901-08	TRAFFIC CONTROL DEVICES

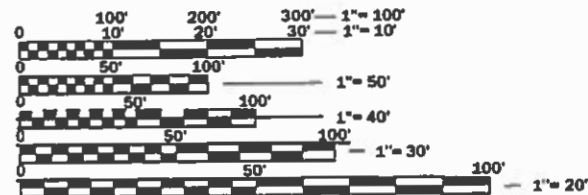
PROPOSED HIGHWAY PLANS

F.A.P. ROUTE 68 (IL 23)
SECTION (37,101)CG
PROJECT
CURB & GUTTER REPAIR
LIVINGSTON COUNTY

C-93-098-18

PROJECT LOCATION

BEGINNING STA. 296+57 TO ENDING STA. 124+35
BRIDGE OMISSION: S.N. 053-0149
CARRYING FAP 68 (IL 23)
OVER THE VERMILION RIVER AND
BURLINGTON NORTHERN SANTA FE RAILWAY
STA. 103+86 TO STA. 112+02



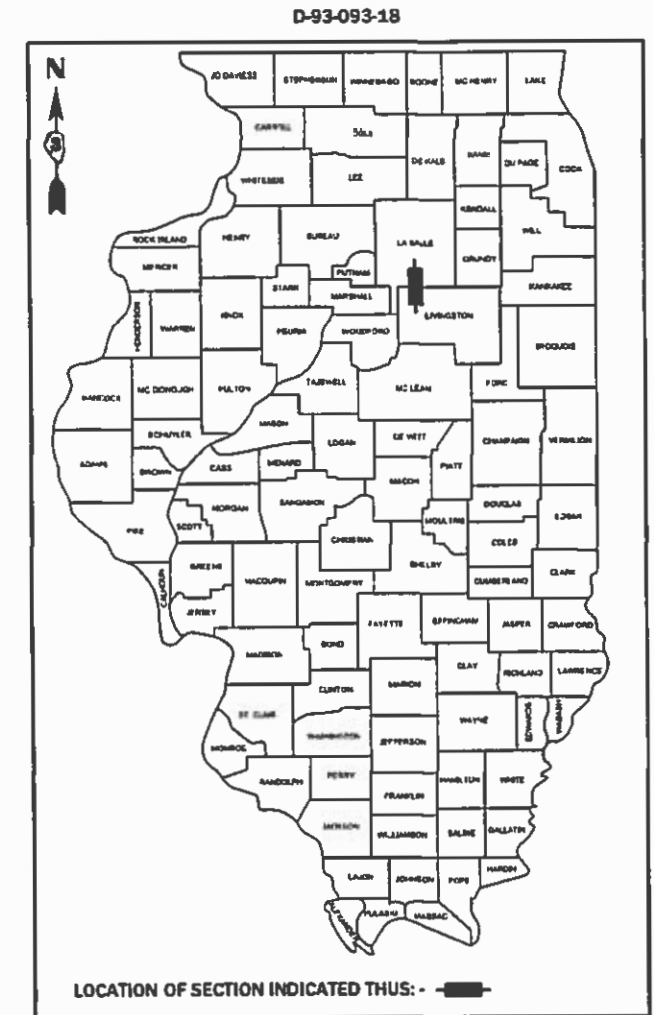
FULL SIZE PLANS HAVE BEEN PREPARED USING STANDARD ENGINEERING SCALES. REDUCED SIZED PLANS WILL NOT CONFORM TO STANDARD SCALES. IN MAKING MEASUREMENTS ON REDUCED PLANS, THE ABOVE SCALES MAY BE USED.

J.U.L.I.E.
JOINT UTILITY LOCATION INFORMATION FOR EXCAVATION
1-800-892-0123
OR 811

PROJECT ENGINEER: JOE KANNEL, P.E.
UNIT CHIEF: RON WOODSHANK
DISTRICT 3 NO. (815) 434-6131
CONTRACT NO. 66J49



GROSS LENGTH = 2,087 FT. = 0.40 MILE
NET LENGTH = 1,271 FT. = 0.24 MILE



FUNCTIONAL CLASSIFICATION

URBAN - MINOR ARTERIAL
F.A.P. ROUTE 68 (IL 23)
2017 ADT = 3100
P.V. 79.5% S.U. 15.3% M.U. 5.2%

STATE OF ILLINOIS
DEPARTMENT OF TRANSPORTATION

SUBMITTED *08/20 2018*
Kim Muehle (w)
REGIONAL ENGINEER

Oct 5 2018
E.A. ETC
ENGINEER OF DESIGN AND ENVIRONMENT

Oct 5 2018
Paul J. ...
DIRECTOR OF HIGHWAYS PROJECT IMPLEMENTATION

PRINTED BY THE AUTHORITY
OF THE STATE OF ILLINOIS

GENERAL NOTES

THE THICKNESS OF HMA SHOWN ON THE PLANS IS THE NOMINAL THICKNESS.

FOR STABILIZATION, ALL TYPE III BARRICADES WILL REQUIRE A MINIMUM OF FOUR SAND BAGS PER BARRICADE.

ALL EXCAVATED MATERIAL, WHICH INCLUDES DIGGING OR GRADING OF ANY SOIL OR FILL MATERIAL, WITH THE EXCEPTION OF AGGREGATE FILLS, MUST BE INCORPORATED WITHIN THE IDOT RIGHT OF WAY DUE TO ENVIRONMENTAL DOCUMENTATION REQUIREMENTS.

ABANDONED UNDERGROUND UTILITIES THAT CONFLICT WITH CONSTRUCTION SHALL BE DISPOSED OF OUTSIDE THE LIMITS OF THE RIGHT OF WAY ACCORDING TO ARTICLE 202.03 OF THE STANDARD SPECIFICATIONS AND AS DIRECTED BY THE ENGINEER. THIS WORK WILL NOT BE PAID FOR SEPARATELY, BUT WILL BE INCLUDED IN THE COST OF EARTH EXCAVATION.

ANY REFERENCE TO A STANDARD IN THESE PLANS SHALL BE INTERPRETED TO MEAN THE EDITION AS INDICATED BY THE SUBNUMBER SHOWN IN THE LIST OF STANDARDS OR THE COPY INCLUDED IN THESE PLANS.

THE FOLLOWING RATES OF APPLICATION HAVE BEEN USED IN CALCULATING PLAN QUANTITIES:

GRANULAR MATERIALS	2.05	TONS / CU YD
--------------------	------	--------------

THE WORK REQUIRED TO CONNECT ANY SEWER TO AN EXISTING DRAINAGE STRUCTURE OR PIPE WILL NOT BE PAID FOR SEPARATELY, BUT WILL BE CONSIDERED AS INCLUDED IN THE CONTRACT UNIT PRICE BID FOR THE SEWER ITEMS.

THE CONTRACTOR SHALL CONTACT JULIE AT LEAST 48 HOURS PRIOR TO EXCAVATION TO DETERMINE WHICH UTILITIES ARE IN THE AREA.

COMMITMENTS

STATE OF ILLINOIS
DEPARTMENT OF TRANSPORTATION
DISTRICT THREE
AS BUILT INFORMATION

SUPERVISING CONSTRUCTION FIELD ENGINEER

RESIDENT ENGINEER / TECHNICIAN

START & END DATES
OF CONSTRUCTION:

INSPECTORS:

STATE OF ILLINOIS
DEPARTMENT OF TRANSPORTATION
DISTRICT THREE

PREPARED BY: *D. Benil*
DISTRICT STUDIES & PLANS ENGINEER

DATE: 8-20-18

EXAMINED BY: *[Signature]*
DISTRICT CONSTRUCTION ENGINEER

Michael A. Short
DISTRICT MATERIALS ENGINEER

[Signature]
DISTRICT OPERATIONS ENGINEER

FILE NAME =	USER NAME = woodshankr	DESIGNED - RW	REVISED -
pw\11084EBIDINTEG.illinois.gov\FWIDOT\Documents\IDOT Offices\District 3\Projects\10366149\CADDData\66J49-cover.dgn		DRAWN - RW	REVISED -
Default		CHECKED - JW	REVISED -
		DATE - 6/26/2018	REVISED -

STATE OF ILLINOIS
DEPARTMENT OF TRANSPORTATION

GENERAL NOTES

SHEET 1 OF 1 SHEETS STA. TO STA.

F.A.P. RTE.	SECTION	COUNTY	TOTAL SHEETS	SHEET NO.
68	(37,101)CG	LIVINGSTON	11	2
				CONTRACT NO. 66J49
ILLINOIS FED. AID PROJECT				

CONSTRUCTION CODE
 CONTRACT MAINTENANCE
 100% STATE
 ROADWAY
 0003
 URBAN

CODE NO.	ITEM	UNIT	TOTAL QUANTITY	
20200100	EARTH EXCAVATION	CU YD	102	102
28001000	AGGREGATE (EROSION CONTROL)	TON	274	274
31100300	SUBBASE GRANULAR MATERIAL, TYPE A 4"	SQ YD	1033	1033
44004250	PAVED SHOULDER REMOVAL	SQ YD	16	16
50800205	REINFORCEMENT BARS, EPOXY COATED	POUND	12484	12484
60601805	CONCRETE CURB TRANSITION	FOOT	64	64
60605000	COMBINATION CONCRETE CURB AND GUTTER, TYPE B-6.24	FOOT	3614	3614
* 63000001	STEEL PLATE BEAM GUARDRAIL, TYPE A, 6 FOOT POSTS	FOOT	2189	2189
* 63100085	TRAFFIC BARRIER TERMINAL, TYPE 6	EACH	4	4
* 63100167	TRAFFIC BARRIER TERMINAL, TYPE 1 (SPECIAL) TANGENT	EACH	4	4
63200310	GUARDRAIL REMOVAL	FOOT	2545	2545
67100100	MOBILIZATION	L SUM	1	1
70100450	TRAFFIC CONTROL AND PROTECTION, STANDARD 701201	L SUM	1	1
* 78200020	CURB REFLECTORS	EACH	46	46

*= SPECIALTY ITEM

FILE NAME =	USER NAME = woodshank1	DESIGNED - RW	REVISED -
pw:\11.084EBID\INTEG.illinois.gov.PWIDOT\Documents\DOT Offices\District 3\Projects\1366649\CADData\66J49-cover.dgn		DRAWN - RW	REVISED -
Default	PLOT SCALE = 100.0000' / in.	CHECKED - JW	REVISED -
	PLOT DATE = 8/15/2018	DATE - 6/26/2018	REVISED -

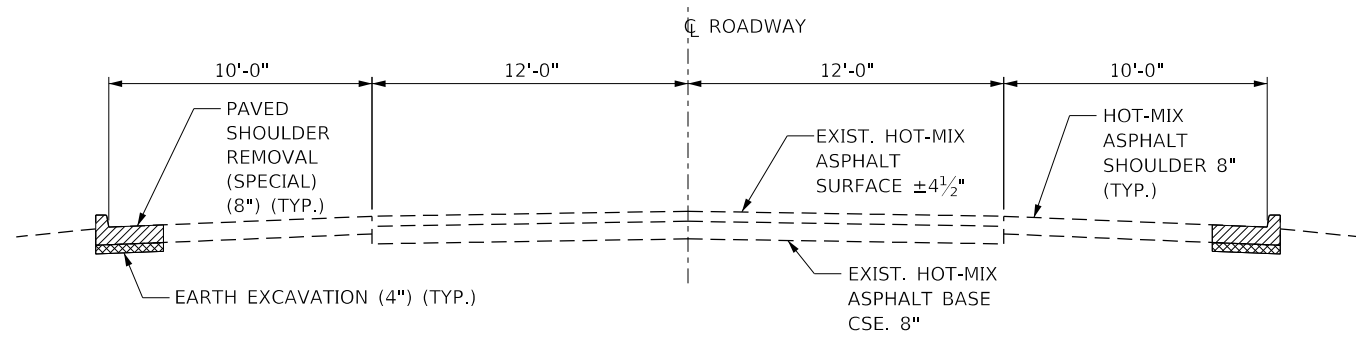
STATE OF ILLINOIS
 DEPARTMENT OF TRANSPORTATION

SUMMARY OF QUANTITIES

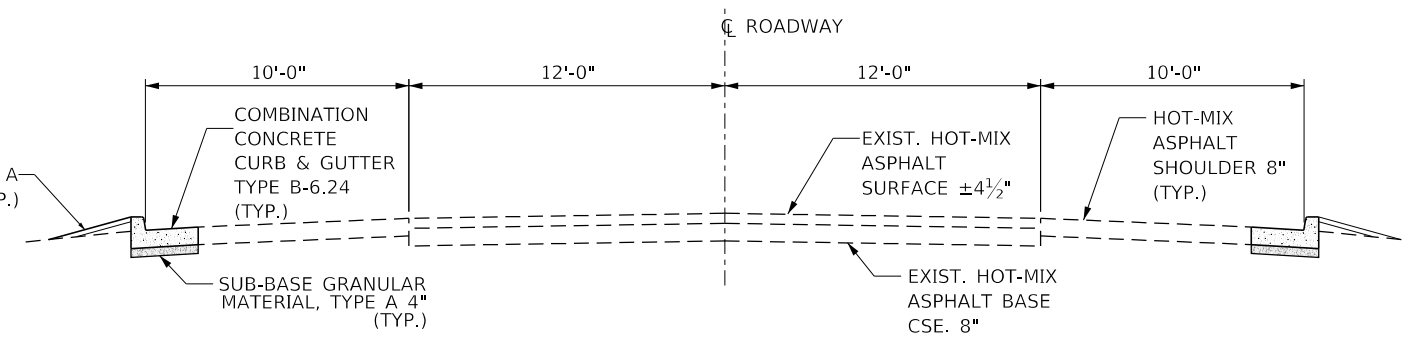
SHEET 1 OF 2 SHEETS STA. TO STA.

F.A.P. RTE.	SECTION	COUNTY	TOTAL SHEETS	SHEET NO.
68	(37,101)CG	LIVINGSTON	11	3
CONTRACT NO. 66J49			ILLINOIS FED. AID PROJECT	

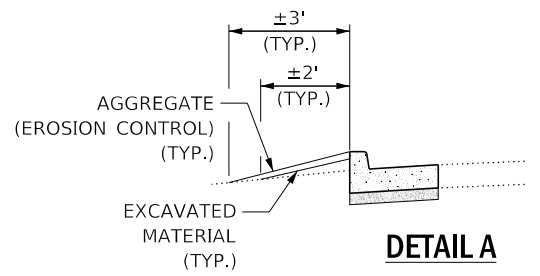
CODE NO.	ITEM	UNIT	TOTAL QUANTITY	CONSTRUCTION CODE	
				CONTRACT MAINTENANCE	
				100% STATE	
				ROADWAY	URBAN
				0003	
X0327809	LINEAR DELINEATOR PANELS, 4 INCH	EACH	30		30
X4404260	PAVED SHOULDER REMOVAL (SPECIAL)	SQ YD	1038		1038
Z0010615	CLEANING EXISTING INLETS	EACH	8		8
Z0030850	TEMPORARY INFORMATION SIGNING	SQ FT	42		42



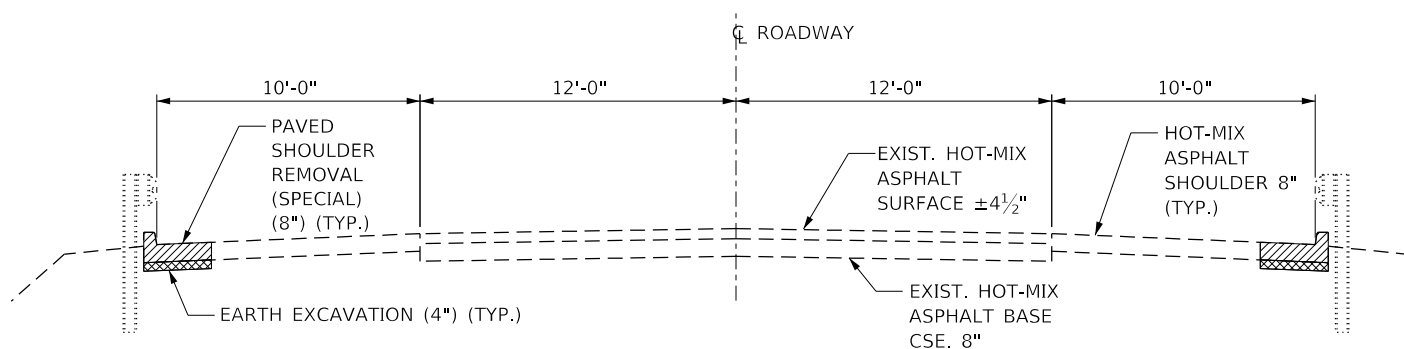
EXISTING TYPICAL SECTION NO. 1
 STA. 296+57 TO STA. 298+93 LT.
 STA. 296+57 TO STA. 298+84 RT.



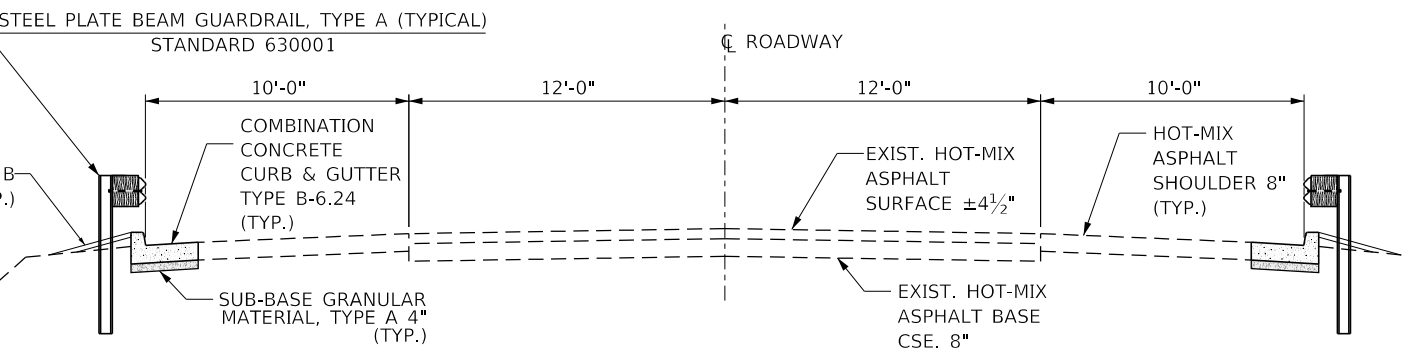
PROPOSED TYPICAL SECTION NO. 1
 STA. 296+57 TO STA. 298+93 LT.
 STA. 296+57 TO STA. 298+84 RT.



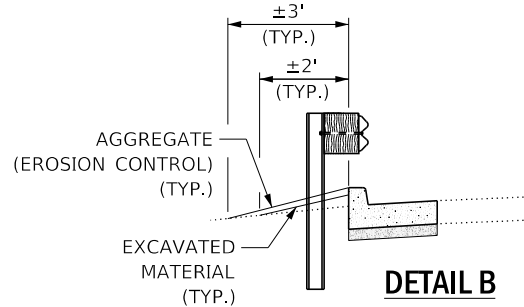
DETAIL A



EXISTING TYPICAL SECTION NO. 2
 STA. 298+93 TO STA. 302+54 LT.
 STA. 298+84 TO STA. 302+38 RT.



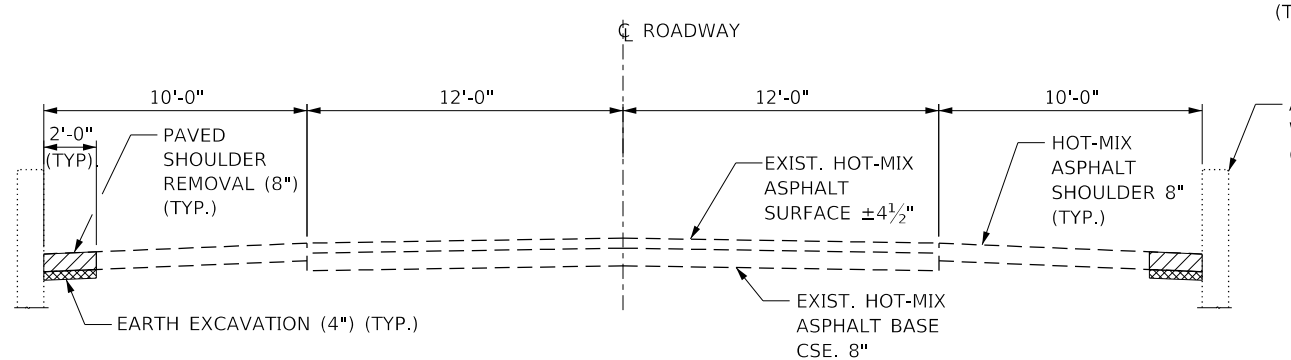
PROPOSED TYPICAL SECTION NO. 2
 STA. 298+93 TO STA. 302+54 LT.
 STA. 298+84 TO STA. 302+38 RT.



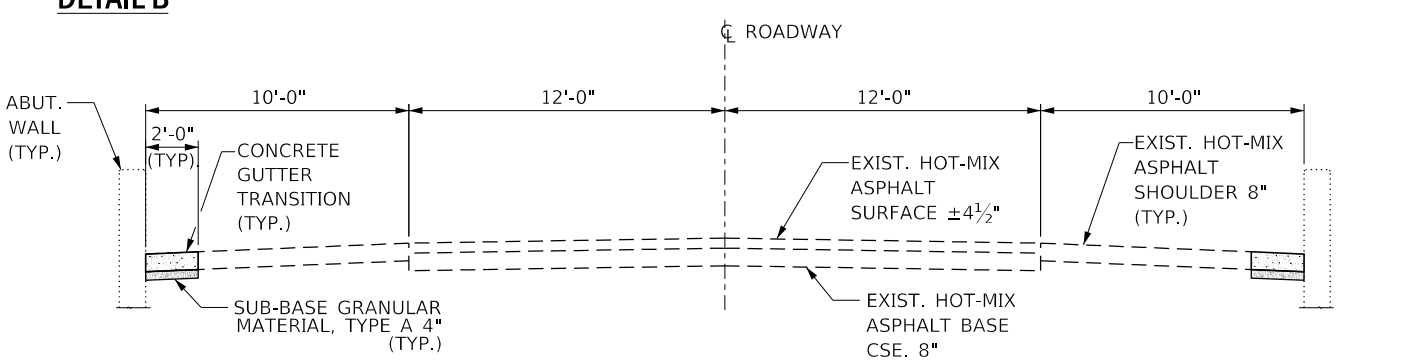
DETAIL B

SEQUENCE OF OPERATIONS

ALL WORK ON ONE SIDE OF THE ROAD SHALL BE COMPLETED INCLUDING ALL GUARDRAIL INSTALLATIONS BEFORE AND WORK IS BEGUN ON THE SECOND SIDE OF THE ROAD.



EXISTING TYPICAL SECTION NO. 3
 STA. 302+54 TO STA. 302+69 LT.
 STA. 302+ 38 TO STA. 302+53 RT.



PROPOSED TYPICAL SECTION NO. 3
 STA. 302+54 TO STA. 302+69 LT.
 STA. 302+ 38 TO STA. 302+53 RT.

NOTES

- NOTE 1. STATIONS INCREASE TO THE SOUTH
- NOTE 2. BK. NORTH ABUT. STA. = 302+61 AT CENTERLINE OF ROADWAY
- NOTE 3. ALL WORK STARTED ON ONE SIDE OF THE ROAD SHALL BE COMPLETED (INCLUDING GUARDRAIL INSTALLATIONS) BEFORE ANY WORK IS BEGUN ON THE OPPOSITE SIDE OF THE ROAD.

STRUCTURE OMISSION
 OMISSION: BK. NO. ABUT.
 STA. 302+61 = STA. 103+86
 TO BK. SO. ABUT. STA. 112+02

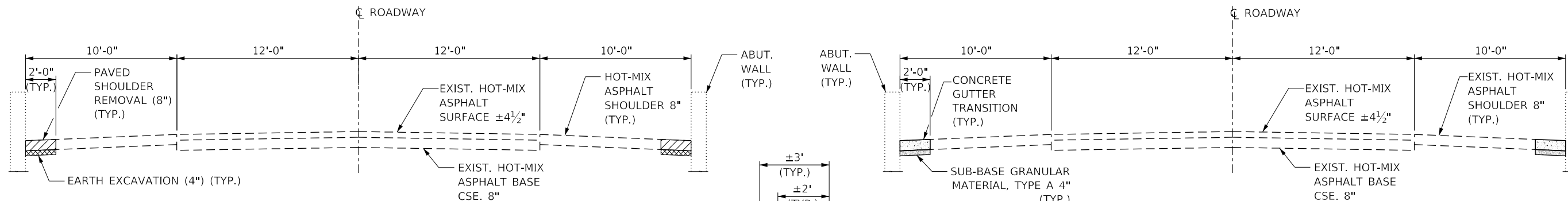
FILE NAME =	USER NAME = woodshank1	DESIGNED - RW	REVISED -
pw:\IL084EB\INTEG\Illinois.gov\PWIDOT\Documents\DOT\Office\District 3\Projects\1366649\CADData\66J49-cover.dgn		DRAWN - RW	REVISED -
	PLOT SCALE = 100,0000 / in.	CHECKED - JW	REVISED -
Default	PLOT DATE = 8/15/2018	DATE - 6/26/2018	REVISED -

**STATE OF ILLINOIS
 DEPARTMENT OF TRANSPORTATION**

**TYPICAL SECTIONS
 NORTH END OF STRUCTURE**

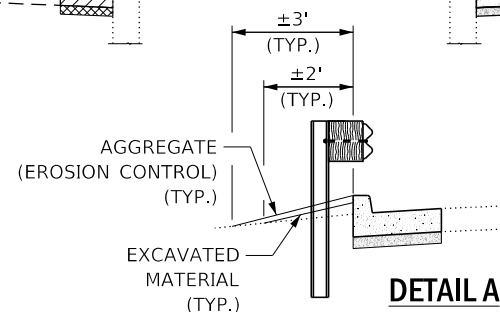
SHEET 1 OF 2 SHEETS STA. 296+57 TO STA. 302+61

F.A.P. RTE.	SECTION	COUNTY	TOTAL SHEETS	SHEET NO.
68	(37,101)CG	LIVINGSTON	11	5
CONTRACT NO. 66J49				
ILLINOIS FED. AID PROJECT				

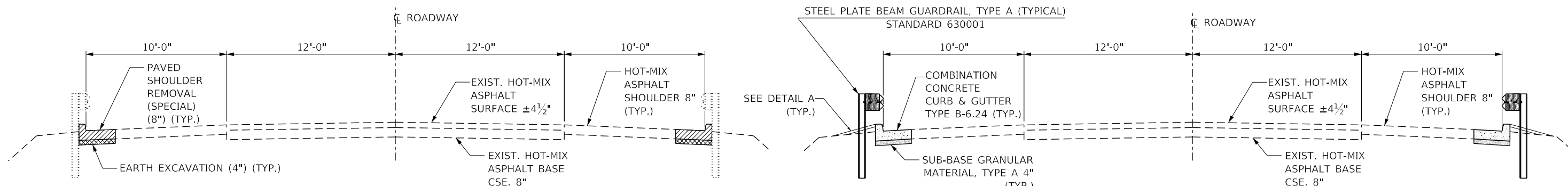


EXISTING TYPICAL SECTION NO. 4
STA. 112+01 TO STA. 112+16 LT. & RT.

PROPOSED TYPICAL SECTION NO. 4
STA. 112+01 TO STA. 112+16 LT. & RT.

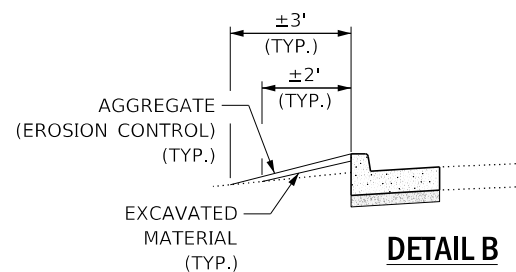


DETAIL A

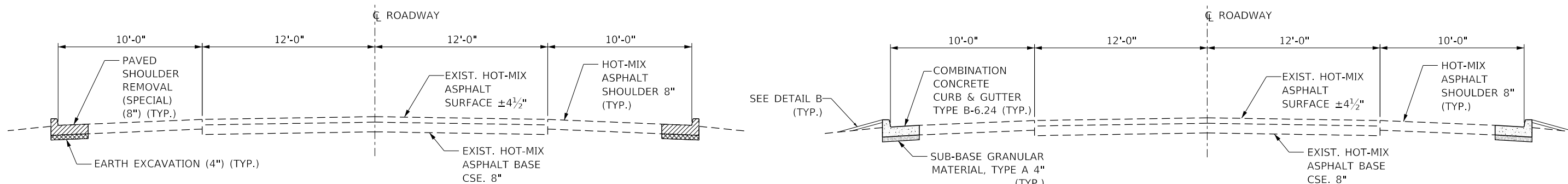


EXISTING TYPICAL SECTION NO. 5
STA. 112+16 TO STA. 121+30 LT. & RT.

PROPOSED TYPICAL SECTION NO. 5
STA. 112+16 TO STA. 121+30 LT. & RT.



DETAIL B



EXISTING TYPICAL SECTION NO. 6
STA. 121+30 TO STA. 124+35 LT. & RT.

PROPOSED TYPICAL SECTION NO. 6
STA. 121+30 TO STA. 124+35 LT. & RT.

NOTES

- NOTE 1. STATIONS INCREASE TO THE SOUTH
- NOTE 2. BK. NORTH ABUT. STA. = 302+61 AT CENTERLINE OF ROADWAY
- NOTE 3. ALL WORK STARTED ON ONE SIDE OF THE ROAD SHALL BE COMPLETED (INCLUDING GUARDRAIL INSTALLATIONS) BEFORE ANY WORK IS BEGUN ON THE OPPOSITE SIDE OF THE ROAD.

STRUCTURE OMISSION
OMISSION: BK. NO. ABUT.
STA. 302+61 = STA. 103+86
TO BK. SO. ABUT. STA. 112+02

FILE NAME =	USER NAME = woodshank1	DESIGNED - RW	REVISED -
pvc:\IL084EB\INTEG\Illinois.gov\PWIDOT\Documents\DOT\Office\District 3\Projects\1366\49\CADData\66J49-cover.dgn		DRAWN - RW	REVISED -
	PLOT SCALE = 100,0000' / in.	CHECKED - JW	REVISED -
Default	PLOT DATE = 8/15/2018	DATE - 6/26/2018	REVISED -

**STATE OF ILLINOIS
DEPARTMENT OF TRANSPORTATION**

**TYPICAL SECTIONS
SOUTH END OF STRUCTURE**

SHEET 2 OF 2 SHEETS STA. 112+00 TO STA. 124+35

F.A.P. RTE.	SECTION	COUNTY	TOTAL SHEETS	SHEET NO.
68	(37,101)CG	LIVINGSTON	11	6
CONTRACT NO. 66J49				
ILLINOIS FED. AID PROJECT				

**SCHEDULE
SUBBASE GRANULAR MATERIAL**

LOCATION				SUBBASE GRANULAR MATERIAL TYPE A 4"
NORTH END OF STRUCTURE				
STATION	TO	STATION	LT/RT	SQ YD
296+57	TO	299+17	LT	75
299+27	TO	302+54	LT	94
302+54	TO	302+70	LT	4
296+57	TO	299+17	RT	75
299+27	TO	302+38	RT	89
302+38	TO	302+54	RT	4
TOTAL				341

**SCHEDULE
SUBBASE GRANULAR MATERIAL**

LOCATION				SUBBASE GRANULAR MATERIAL TYPE A 4"
SOUTH END OF STRUCTURE				
STATION	TO	STATION	LT/RT	SQ YD
112+01	TO	112+17	LT	4
112+17	TO	115+44	LT	94
115+54	TO	119+95	LT	126
120+05	TO	124+35	LT	123
112+01	TO	112+17	RT	4
112+17	TO	115+44	RT	94
115+54	TO	118+25	RT	78
118+35	TO	119+95	RT	46
120+05	TO	124+35	RT	123
TOTAL				692

**SCHEDULE
STEEL PLATE BEAM GUARDRAIL**

LOCATION				GUARDRAIL REMOVAL	STEEL PLATE BEAM GUARDRAIL, TYPE A 6' POSTS	TRAFFIC BARRIER TERMINAL, TYPE 1 (SPECIAL) TANGENT	TRAFFIC BARRIER TERMINAL, TYPE 6	LINEAR DELINEATOR PANELS, 4 INCH
NORTH END OF STRUCTURE								
STATION	TO	STATION	LT/RT	FOOT	FOOT	EACH	EACH	EACH
298+93	TO	299+43	LT	50		1		
299+43	TO	302+18	LT	275	275			4
302+18	TO	302+54	LT	36			1	
298+84	TO	299+34	RT	50		1		
299+34	TO	302+02	RT	268	268			4
302+02	TO	302+38	RT	36			1	
TOTAL				715	543	2	2	8

**SCHEDULE
EARTH EXCAVATION**

LOCATION				EARTH EXCAVATION
NORTH END OF STRUCTURE				
STATION	TO	STATION	LT/RT	CU YD
296+57	TO	299+17	LT	8.0
299+17	TO	302+54	LT	10.6
302+54	TO	302+70	LT	1.4
296+57	TO	299+17	RT	8.0
299+17	TO	302+38	RT	10.1
302+38	TO	302+54	RT	1.4
TOTAL				39.5

**SCHEDULE
EARTH EXCAVATION**

LOCATION				EARTH EXCAVATION
SOUTH END OF STRUCTURE				
STATION	TO	STATION	LT/RT	CU YD
112+01	TO	112+17	LT	1.4
112+17	TO	115+44	LT	8.0
115+44	TO	119+95	LT	11.0
119+95	TO	124+35	LT	10.8
112+01	TO	112+17	RT	1.4
112+17	TO	115+44	RT	8.0
115+44	TO	118+25	RT	6.9
118+25	TO	119+95	RT	4.2
119+95	TO	124+35	RT	10.8
TOTAL				62.5

**SCHEDULE
STEEL PLATE BEAM GUARDRAIL**

LOCATION				GUARDRAIL REMOVAL	STEEL PLATE BEAM GUARDRAIL, TYPE A 6' POSTS	TRAFFIC BARRIER TERMINAL, TYPE 1 (SPECIAL) TANGENT	TRAFFIC BARRIER TERMINAL, TYPE 6	LINEAR DELINEATOR PANELS, 4 INCH
SOUTH END OF STRUCTURE								
STATION	TO	STATION	LT/RT	FOOT	FOOT	EACH	EACH	EACH
112+17	TO	112+53	LT	36			1	
112+53	TO	120+80	LT	827	827			11
120+80	TO	121+30	LT	50		1		
112+17	TO	112+53	RT	36			1	
112+53	TO	120+80	RT	827	827			11
120+80	TO	121+30	RT	50		1		
TOTAL				1826	1654	2	2	22

**SCHEDULE
CURB AND GUTTER**

LOCATION				COMBINATION CONCRETE CURB & GUTTER TYPE B-6.24	CONCRETE CURB TRANSITION	CURB REFLECTORS	AGGREGATE (EROSION CONTROL)
NORTH END OF STRUCTURE							
STATION	TO	STATION	LT/RT	FOOT	FOOT	EACH	TON
296+57	TO	299+17	LT	260		3	20
299+17	TO	302+54	LT	337		4	26
302+54	TO	302+70	LT		16		
296+57	TO	299+17	RT	260		3	20
299+17	TO	302+38	RT	321		4	24
302+38	TO	302+54	RT		16		
TOTAL				1178	32	14	89

**SCHEDULE
PAVED SHOULDER REMOVAL**

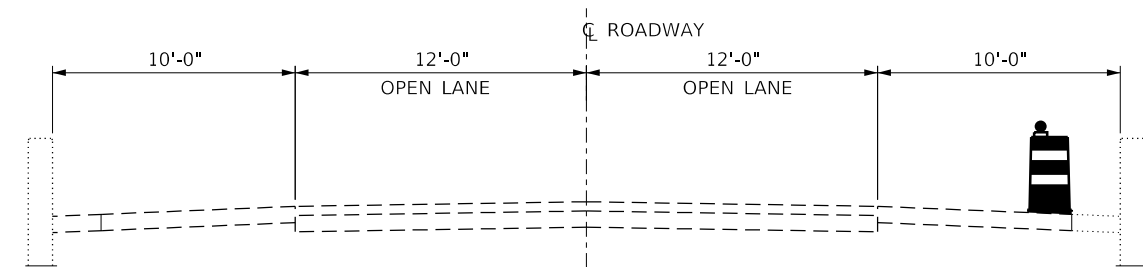
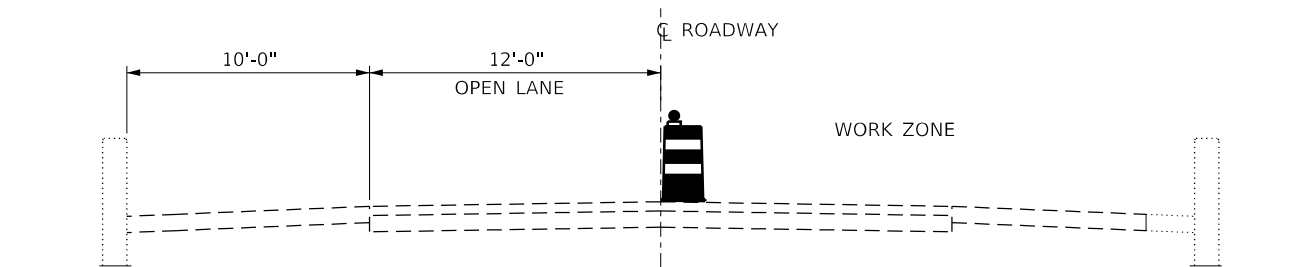
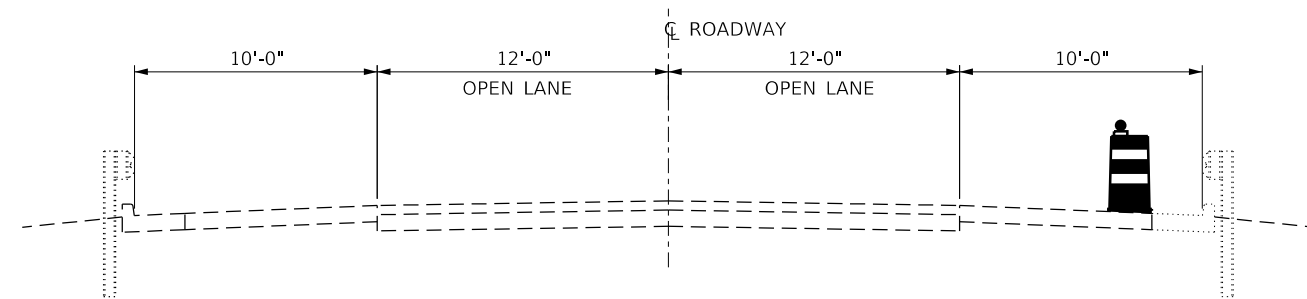
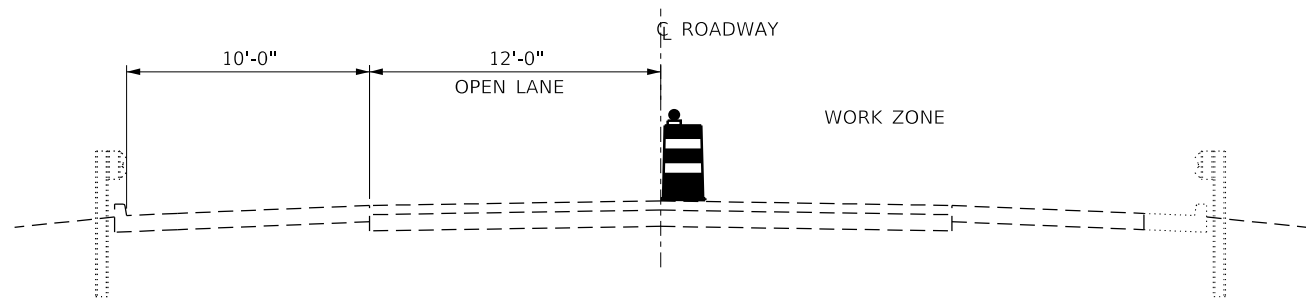
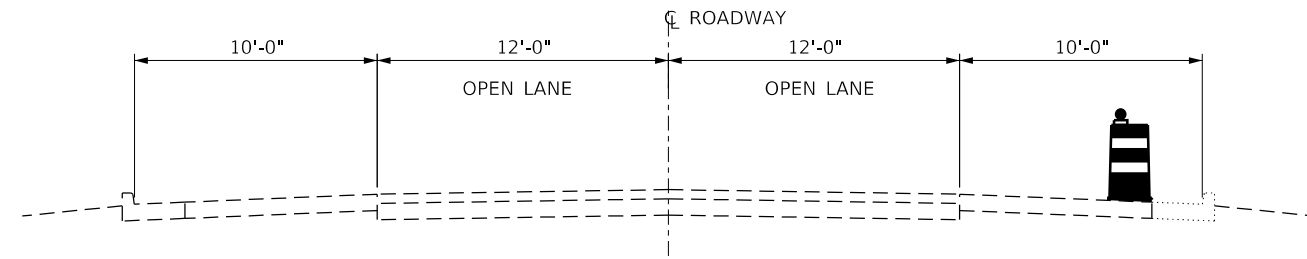
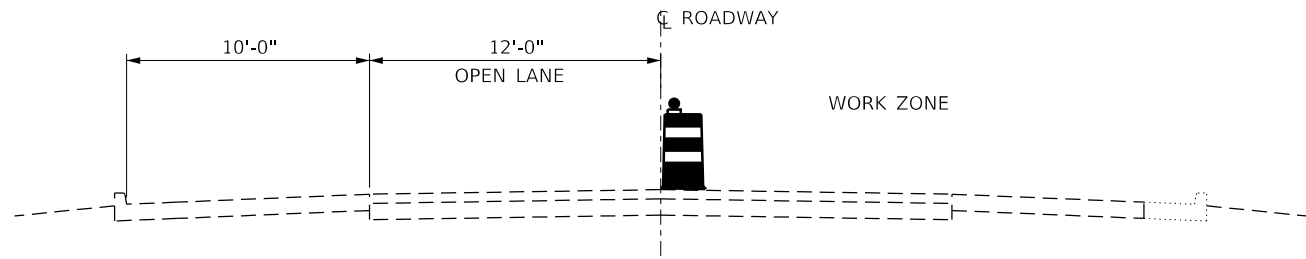
LOCATION				PAVED SHOULDER REMOVAL (SPECIAL)	PAVED SHOULDER REMOVAL
NORTH END OF STRUCTURE					
STATION	TO	STATION	LT/RT	SQ YD	SQ YD
296+57	TO	299+17	LT	75	
299+17	TO	302+54	LT	97	
302+54	TO	302+70	LT		4
296+57	TO	299+17	RT	75	
299+17	TO	302+38	RT	92	
302+38	TO	302+54	RT		4
TOTAL				339	8

**SCHEDULE
CURB AND GUTTER**

LOCATION				COMBINATION CONCRETE CURB & GUTTER TYPE B-6.24	CONCRETE CURB TRANSITION	CURB REFLECTORS	AGGREGATE (EROSION CONTROL)
SOUTH END OF STRUCTURE							
STATION	TO	STATION	LT/RT	FOOT	FOOT	EACH	TON
112+01	TO	112+17	LT		16		
112+17	TO	115+44	LT	327		4	25
115+44	TO	119+95	LT	451		6	34
119+95	TO	124+35	LT	440		6	33
112+01	TO	112+17	RT		16		
112+17	TO	115+44	RT	327		4	25
115+44	TO	118+25	RT	281		4	21
118+25	TO	119+95	RT	170		2	13
119+95	TO	124+35	RT	440		6	33
TOTAL				2436	32	32	185

**SCHEDULE
PAVED SHOULDER REMOVAL**

LOCATION				PAVED SHOULDER REMOVAL (SPECIAL)	PAVED SHOULDER REMOVAL
SOUTH END OF STRUCTURE					
STATION	TO	STATION	LT/RT	SQ YD	SQ YD
112+01	TO	112+17	LT		4
112+17	TO	115+44	LT	94	
115+44	TO	119+95	LT	129	
119+95	TO	124+35	LT	126	
112+01	TO	112+17	RT		4
112+17	TO	115+44	RT	94	
115+44	TO	118+25	RT	81	
118+25	TO	119+95	RT	49	
119+95	TO	124+35	RT	126	
TOTAL				699	8



DAY TIME LANE CLOSURE WHEN WORK IS BEING PERFORMED

WHEN WORK IS BEING PERFORMED, TRAFFIC CONTROL AND PROTECTION SHALL BE ACCORDING TO TRAFFIC CONTROL AND PROTECTION STANDARD 701201.

NIGHT TIME LANE CLOSURE WHEN NO WORK IS BEING PERFORMED

NOTES

NOTE 1. SOUTHBOUND LANE SHOWN, NORTHBOUND LANE CLOSURE SHALL BE A MIRROR IMAGE TO WHAT IS SHOWN

NOTE 2. TRAFFIC CONTROL DRUMS SHALL BE PLACED AT 25' CTS. THROUGH OUT LANE CLOSURES.

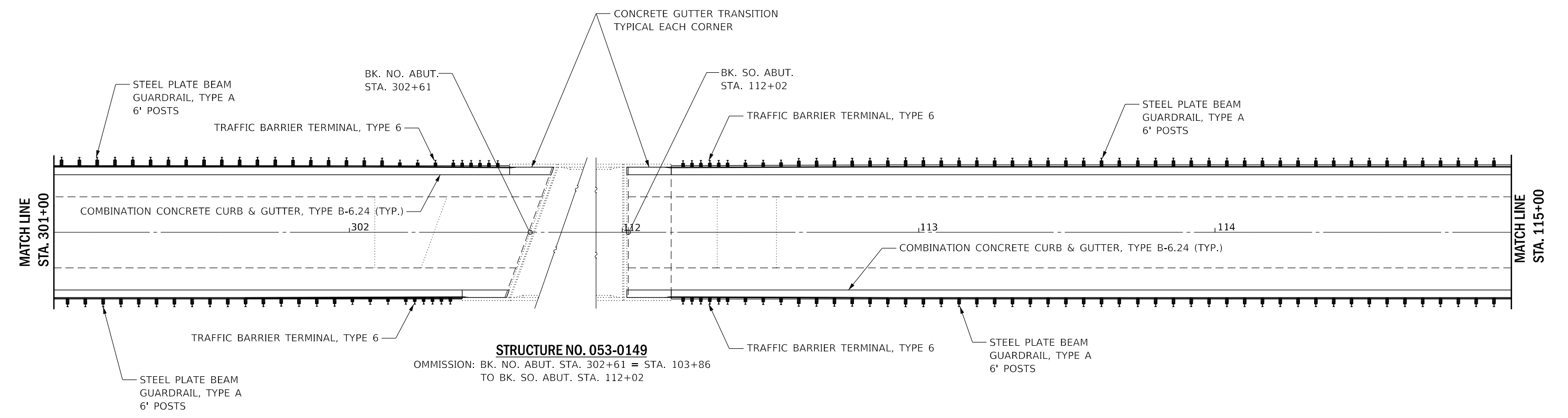
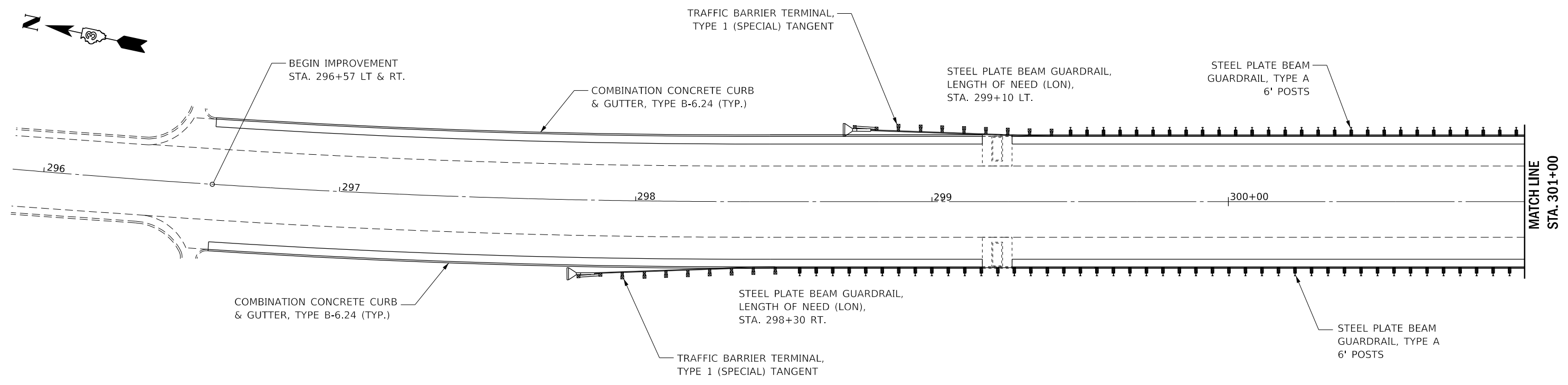
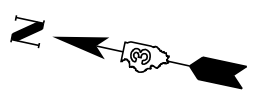
FILE NAME =	USER NAME = woodshank1	DESIGNED - RW	REVISED -
pw:\IL084EBIDINTEG\Illinois.gov\PWIDOT\Documents\DOT Offices\District 3\Projects\0366\49\CADD\66J49-cover.dgn		DRAWN - RW	REVISED -
Default	PLOT SCALE = 100.0000 "/in.	CHECKED - JW	REVISED -
	PLOT DATE = 8/15/2018	DATE - 6/26/2018	REVISED -

**STATE OF ILLINOIS
DEPARTMENT OF TRANSPORTATION**

TRAFFIC CONTROL DETAILS

SHEET 1 OF 1 SHEETS STA. TO STA.

F.A.P. RTE.	SECTION	COUNTY	TOTAL SHEETS	SHEET NO.
68	(37.101)CG	LIVINGSTON	11	8
CONTRACT NO. 66J49				
ILLINOIS FED. AID PROJECT				

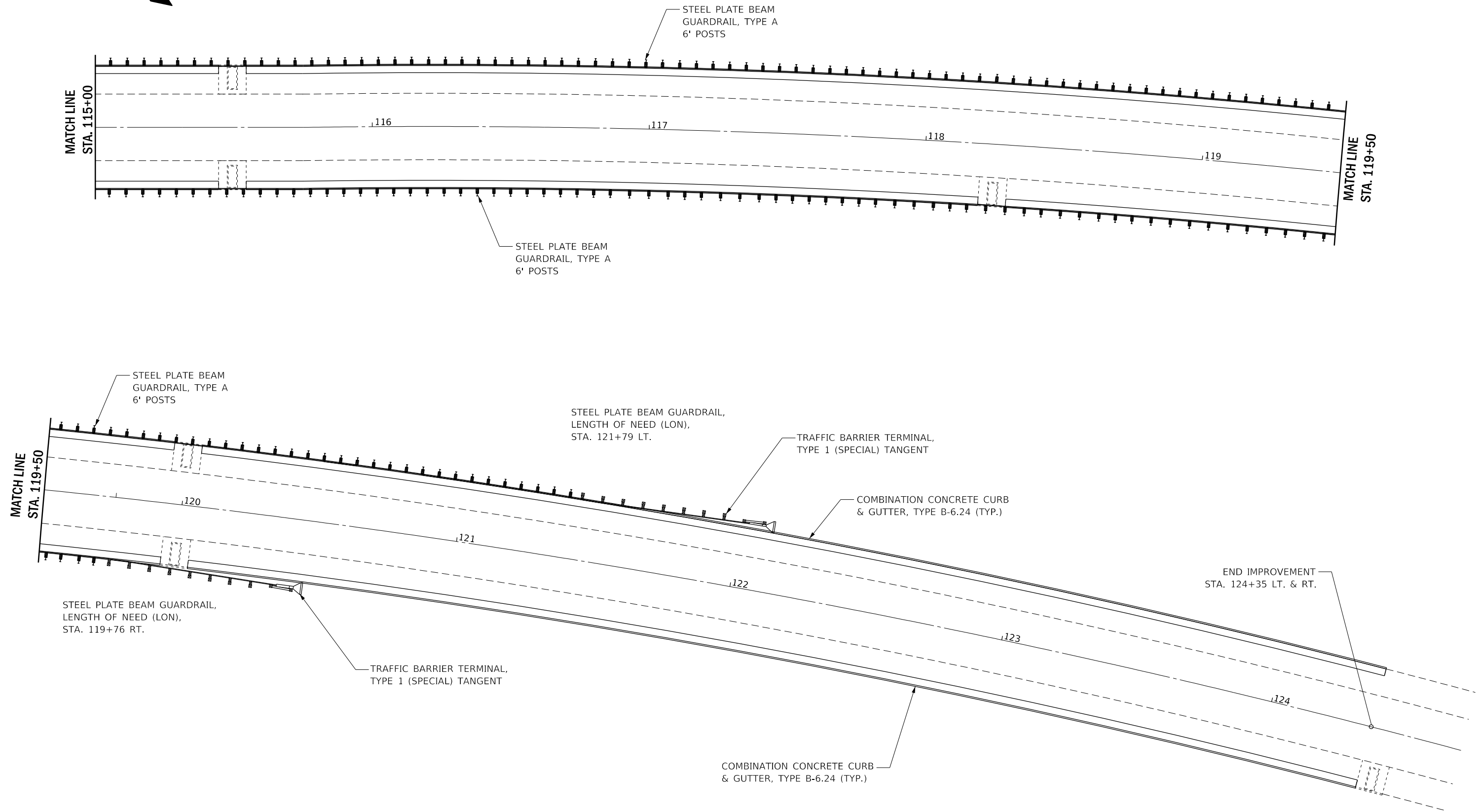


FILE NAME =	USER NAME = woodshank1	DESIGNED - RW	REVISED - RW 9/13/2018
p:\01\084EB\INTEG\Illinois.gov\PWIDOT\Documents\DOT Offices\District 3\Projects\0366\49\CADD\06\49-cover.dgn		DRAWN - RW	REVISED -
Default	PLOT SCALE = 100,0000' / in.	CHECKED - JW	REVISED -
	PLOT DATE = 9/13/2018	DATE - 6/26/2018	REVISED -

**STATE OF ILLINOIS
DEPARTMENT OF TRANSPORTATION**

ROADWAY PLAN NORTH END OF STRUCTURE			
F.A.P. RTE. 68	SECTION (37.101)CG	COUNTY LIVINGSTON	TOTAL SHEETS 11
SHEET 1 OF 2 SHEETS		STA. 296+57	TO STA. 115+00

SHEET NO. 9	CONTRACT NO. 66J49	ILLINOIS	FED. AID PROJECT
-------------	--------------------	----------	------------------



FILE NAME =	USER NAME = woodshank1	DESIGNED - RW	REVISED - RW 9/13/2018
Default		CHECKED - JW	REVISED -
	PLOT DATE = 9/13/2018	DATE - 6/26/2018	REVISED -

**STATE OF ILLINOIS
DEPARTMENT OF TRANSPORTATION**

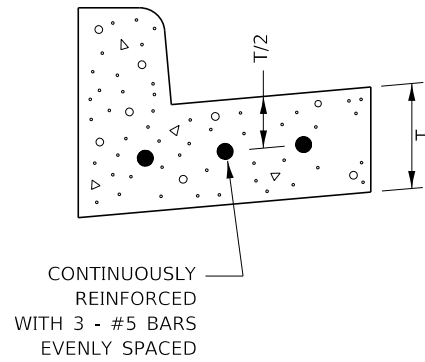
**ROADWAY PLAN
SOUTH END OF STRUCTURE**

SHEET 2 OF 2 SHEETS STA. 115+00 TO STA. 124+35

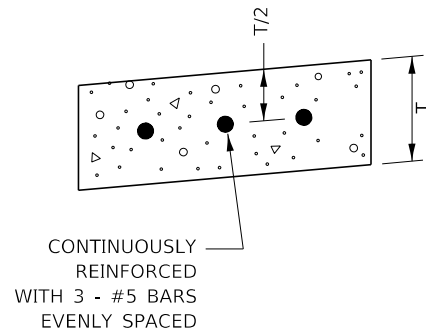
F.A.P. RTE.	SECTION	COUNTY	TOTAL SHEETS	SHEET NO.
68	(37.101)CG	LIVINGSTON	11	10
CONTRACT NO. 66J49				
ILLINOIS FED. AID PROJECT				

NOTES

- NOTE 1. REINFORCEMENT BARS FOR CURB AND GUTTER SHALL BE PROVIDED IN 30' LENGTHS AND SHALL HAVE A MINIMUM OF 18" LAP SPLICE. LAP LENGTH MAY BE ADJUSTED OR THE BAR CUT TO FIT FIELD CONDITIONS.
- NOTE 2. REINFORCEMENT BARS SHALL BE CUT IN THE FIELD TO AVOID EXISTING PRECAST CONCRETE INLET SLABS/CURBS.



REINFORCEMENT DETAIL FOR COMBINATION CONCRETE CURB AND GUTTER TYPE B-6.24



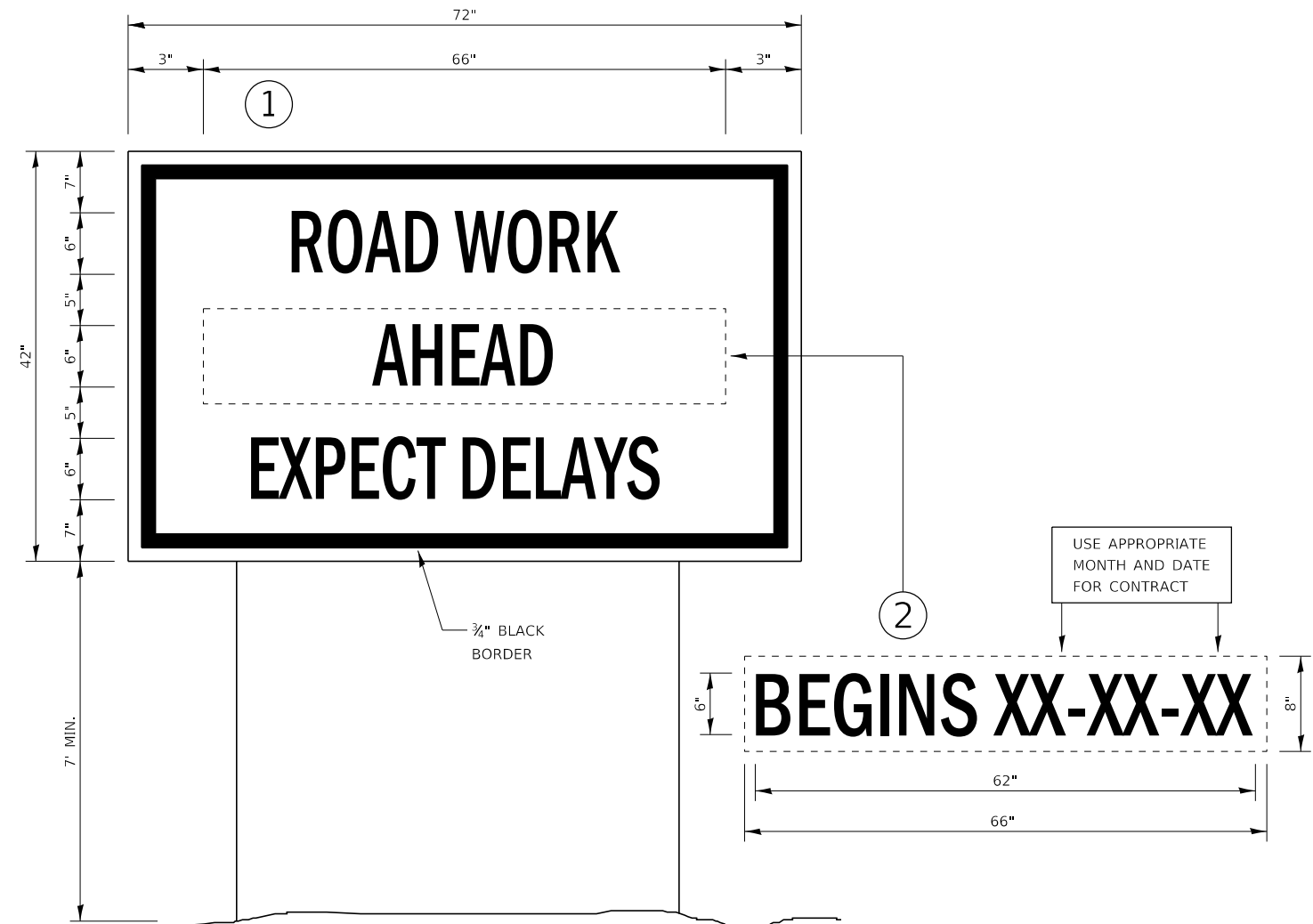
REINFORCEMENT DETAIL FOR CONCRETE GUTTER TRANSITION

REINFORCEMENT BARS FOR CURB & GUTTER

LOCATION	NO.	SIZE	LENGTH	POUNDS
NORTH END OF STRUCTURE				
STA. 296+57 TO STA. 302+70 LT	66	#5	30' - 0"	2065
STA. 296+57 TO STA. 302+54 RT.	69	#5	30' - 0"	2159
TOTAL				4224

REINFORCEMENT BARS FOR CURB & GUTTER

LOCATION	NO.	SIZE	LENGTH	POUNDS
SOUTH END OF STRUCTURE				
STA. 112+01 TO STA. 124+35 LT	132	#5	30' - 0"	4130
STA. 112+01 TO STA. 124+35 RT.	132	#5	30' - 0"	4130
TOTAL				8260



TEMPORARY INFORMATION SIGNING

NOTES:

- USE 6" D BLACK LETTERING ON FLUORESCENT ORANGE BACKGROUND.
- ERECT SIGNS AT LOCATIONS IN ADVANCE OF THE "ROAD CONSTRUCTION AHEAD" SIGNS AS DIRECTED BY THE ENGINEER.
- ERECT SIGN ① WITH INSTALLED PANEL ② A MINIMUM OF ONE WEEK PRIOR TO THE START OF THE LANE CLOSURE.
- REMOVE PANEL ② ON THAT DATE.
- SEE SPECIAL PROVISION "TEMPORARY INFORMATION SIGNING" FOR ADDITIONAL INFORMATION.
- WILL BE PAID FOR PER SQ FT AS "TEMPORARY INFORMATION SIGNING". EACH SIGN = 21 SQ FT AND THE DATE PANEL ② WILL NOT BE MEASURED SEPARATELY FOR PAYMENT.