

073

STATE OF ILLINOIS  
DEPARTMENT OF TRANSPORTATION

FAI RTE	SECTION	COUNTY	TOTAL SHEETS	SHEET NO.
55	(53-2,1)R	LIVINGSTON	31	1
ILLINOIS			CONTRACT NO. 66H50	

D-93-035-17  
D-93-080-18

**INDEX OF SHEETS**

1	COVER SHEET
2	GENERAL NOTES & COMMITMENTS
3-7	SUMMARY OF QUANTITIES
8-9	TYPICAL SECTIONS
10-11	SCHEDULES
12-13	PLAN AND PROFILE
14-16	STAGING PLANS
17-19	ALTERNATE ROUTE PLANS
20-23	DETAILS
24-31	CROSS SECTIONS

# PROPOSED HIGHWAY PLANS

## FAI ROUTE 55 (I-55) SECTION (53-2,1)R PROJECT NHPP-HQ6B(497) PAVEMENT RECONSTRUCTION LIVINGSTON COUNTY

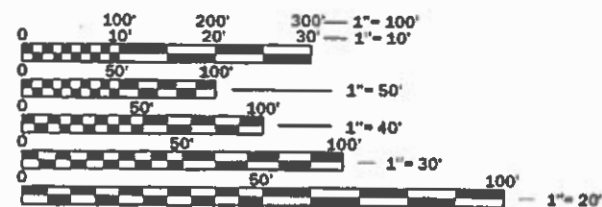
C-93-084-18

**LIST OF ILLINOIS DOT HIGHWAY STANDARDS**

000001-06	STANDARD SYMBOLS, ABBREVIATIONS AND PATTERNS
001001-02	AREAS OF REINFORCEMENT BARS
001006	DECIMAL OF AN INCH AND OF A FOOT
280001-07	TEMPORARY EROSION CONTROL SYSTEMS
420001-09	PAVEMENT JOINTS
420701-03	PAVEMENT WELDED WIRE REINFORCEMENT
421001-03	BAR REINFORCEMENT FOR CRC PAVEMENT
421101-10	24' (7.2 m) CRC PAVEMENT (WITH WIDE FLANGE BEAM TERMINAL JOINT)
483001-05	PCC SHOULDER
601001-05	PIPE UNDERDRAINS
601101-02	CONCRETE HEADWALL FOR PIPE UNDERDRAIN
642001-02	SHOULDER RUMBLE STRIPS, 16 INCH
701101-05	OFF ROAD OPERATIONS, MULTILANE, 15' (4.5 m) TO 24' (600 mm) FROM PAVEMENT EDGE
701106-02	OFF ROAD OPERATIONS, MULTILANE, MORE THAN 15' (4.5 m) AWAY
701402-12	LANE CLOSURE, FREEWAY/EXPRESSWAY, WITH BARRIER
701406-11	LANE CLOSURE, FREEWAY/EXPRESSWAY, DAY OPERATIONS ONLY
701426-09	LANE CLOSURE, MULTILANE INTERMITTENT OR MOVING OPERATION, FOR SPEEDS ≥ 45 MPH
701901-07	TRAFFIC CONTROL DEVICES
704001-08	TEMPORARY CONCRETE BARRIER
720011-01	METAL POSTS FOR SIGNS, MARKERS AND DELINEATORS
780001-05	TYPICAL PAVEMENT MARKINGS
781001-04	TYPICAL APPLICATIONS RAISED REFLECTIVE PAVEMENT MARKERS



INTERSTATE  
2017 ADT = 22,500  
P.V. = 70.2% M.U. = 26.7% S.U. = 3.1%

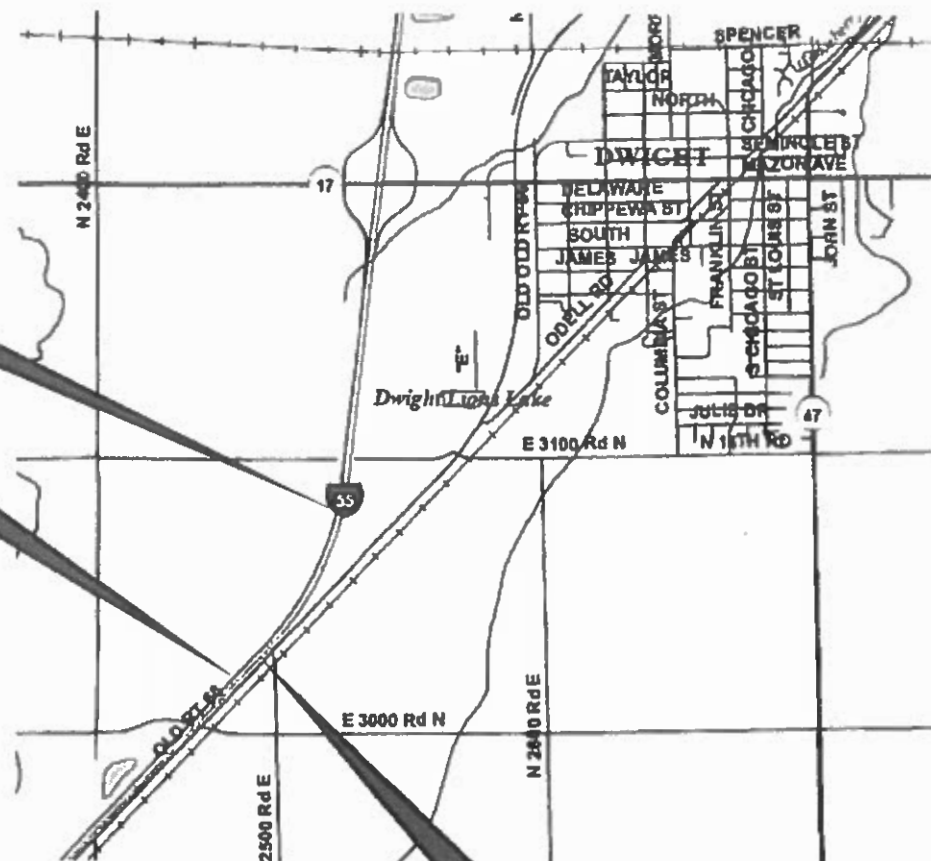


FULL SIZE PLANS HAVE BEEN PREPARED USING STANDARD ENGINEERING SCALES. REDUCED SIZED PLANS WILL NOT CONFORM TO STANDARD SCALES. IN MAKING MEASUREMENTS ON REDUCED PLANS, THE ABOVE SCALES MAY BE USED.

J.U.L.I.E.  
JOINT UTILITY LOCATION INFORMATION FOR EXCAVATION  
1-800-892-0123  
OR 811

END IMPROVEMENT  
STA 164+00

BEGIN IMPROVEMENT  
STA 652+63.5



END RESURFACING \ BEGIN CONC  
PVMT REPLACEMENT  
STA 655+49.43 BK \ STA 150+05.99 AH

GROSS LENGTH = NET LENGTH = 1679.94 FT = 0.318 MILE

PROJECT ENGINEER: JOE KANNEL, P.E.  
UNIT CHIEF: MICHELE LINDEMANN, P.E.  
DISTRICT 3 NO. (815) 434-6131  
CONTRACT NO. 66H50

STATE OF ILLINOIS  
DEPARTMENT OF TRANSPORTATION

SUBMITTED August 17, 2018  
*Kevin Marshall* REGIONAL ENGINEER  
October 5, 2018  
*Paul P. [Signature]* ENGINEER OF DESIGN AND ENVIRONMENT  
October 5, 2018  
*Paul P. [Signature]* DIRECTOR OF HIGHWAYS PROJECT IMPLEMENTATION

PRINTED BY THE AUTHORITY  
OF THE STATE OF ILLINOIS

**COMMITMENTS**

**GENERAL NOTES**

EXCEPT AS NOTED ON THE PLANS, PAVEMENT GRADES SHOWN ARE AT THE TOP OF PAVEMENT SURFACES.

BEFORE ORDERING PIPE CULVERTS OR PIPE DRAINS, THE CONTRACTOR SHALL CONSULT THE ENGINEER FOR EXACT LENGTHS.

THE ENGINEER WILL BE THE SOLE JUDGE CONCERNING CURING TIME FOR THE VARIOUS HMA LIFTS.

PERMANENT SEEDING WILL NOT BE PERMITTED AT ANY TIME WHEN THE GROUND IS FROZEN, WET, OR IN AN UNTILLABLE CONDITION. LOCATIONS TO BE SEEDED WILL BE DETERMINED BY THE ENGINEER.

THE FINISHED EARTHWORK SHALL HAVE A VEGETATION SUSTAINING SOIL COVERING THE TOP FOUR INCHES ( 100 MILLIMETERS) IN AREAS TO BE SEEDED OR SODDED. THE VEGETATION SUSTAINING SOIL REQUIRED WILL NOT BE PAID FOR SEPARATELY BUT WILL BE INCLUDED IN THE COST OF FURNISHED EXCAVATION.

ALL ELEVATIONS REFERRING TO U.S.G.S. MEAN SEA LEVEL DATUM.

ANY REFERENCE TO A STANDARD IN THESE PLANS SHALL BE INTERPRETED TO MEAN THE EDITION AS INDICATED BY THE SUBNUMBER SHOWN IN THE LIST OF STANDARDS OR THE COPY INCLUDED IN THESE PLANS.

THE FOLLOWING RATES OF APPLICATION HAVE BEEN USED IN CALCULATING PLAN QUANTITIES:

GRANULAR MATERIALS	2.05	TONS / CU YD
HMA RESURFACING	112	LBS / SQ YD / IN
SHORT TERM PAVEMENT MARKING	10	FT / 100 FT OF APPLICATION
MIX FOR CRACKS, JTS & FLGWYS	0.0003	TONS / SQ YD
LEVEL BINDER (HAND METHOD)	0.0005	TONS / SQ YD
SUPPLEMENTAL WATERING	3	GAL / SQ YD / APPLICATION
CALCIUM CHLORIDE	2	LB / SQ YD / APPLICATION

LOCATION(S):	ENTIRE PROJECT			
MIXTURE USE(S):	HMA SURFACE	HMA LEVEL BINDER	HMA SHLD & TOP 2" OF TEMP PVMT	TEMP PAVEMENT (BOTTOM LIFTS)
BINDER GRADE (PG):	SBS PG70-28	SBS PG70-28	PG64-22	PG64-22
DESIGN AIR VOIDS:	4.0% @ N90	4.0% @ N90	4.0% @ N70	4.0% @ N70
MIXTURE COMPOSITION: (MIXTURE GRADATION)	IL 9.5	IL 9.5	IL 9.5	IL 19.0
FRICTION AGGREGATE:	MIXTURE D			
MIXTURE WEIGHT:	112.0 LB/SY/IN	112.0 LB/SY/IN	112.0 LB/SY/IN	112.0 LB/SY/IN
QUALITY MANAGEMENT PROGRAM:	QCQA	QCQA	QCQA	QCQA
SUBLOT SIZE:	NA	NA	NA	NA
DENSITY TEST METHOD:	CORES	SATISFACTION OF ENGINEER	NUCLEAR/CORES	NUCLEAR/CORES

STATE OF ILLINOIS  
DEPARTMENT OF TRANSPORTATION  
DISTRICT THREE  
AS BUILT INFORMATION

\_\_\_\_\_  
SUPERVISING CONSTRUCTION FIELD ENGINEER

\_\_\_\_\_  
RESIDENT ENGINEER / TECHNICIAN

START & END DATES  
OF CONSTRUCTION:

INSPECTORS:

STATE OF ILLINOIS  
DEPARTMENT OF TRANSPORTATION  
DISTRICT THREE

PREPARED BY: *Don Bannick*  
DISTRICT STUDIES & PLANS ENGINEER

DATE: 8-17-18

EXAMINED BY: *Kyle Vidzeman*  
DISTRICT CONSTRUCTION ENGINEER

*Michael Ashby*  
DISTRICT MATERIALS ENGINEER

*Joe McPherson*  
DISTRICT OPERATIONS ENGINEER

STATE OF ILLINOIS  
DEPARTMENT OF TRANSPORTATION

**GENERAL NOTES**

FILE NAME *	USER NAME * cccorlan	DESIGNED -	REVISED -
c:\pwr_work\pwwork\ccorlan\mid0515465\0366H50-the-copy.dgn		DRAWN -	REVISED -
	PLOT SCALE = 100.0000' = 1" =	CHECKED -	REVISED -
SMODELNAME\$	PLOT DATE = 8/14/2018	DATE -	REVISED -

SCALE:	SHEET	OF	SHEETS	STA	TO STA															
<table border="1"> <tr> <th>FAI RTE</th> <th>SECTION</th> <th>COUNTY</th> <th>TOTAL SHEETS</th> <th>SHEET NO.</th> </tr> <tr> <td>65</td> <td>(53-2.1)R</td> <td>LIVINGSTON</td> <td>31</td> <td>2</td> </tr> <tr> <td colspan="5">CONTRACT NO. 66H50</td> </tr> </table>						FAI RTE	SECTION	COUNTY	TOTAL SHEETS	SHEET NO.	65	(53-2.1)R	LIVINGSTON	31	2	CONTRACT NO. 66H50				
FAI RTE	SECTION	COUNTY	TOTAL SHEETS	SHEET NO.																
65	(53-2.1)R	LIVINGSTON	31	2																
CONTRACT NO. 66H50																				

\*

CODE NO.	ITEM	UNIT	TOTAL QUANTITY	CONSTR. CODE	
				90% FED 10% STATE	
				ROADWAY	
				0004	
				RURAL	
20200100	EARTH EXCAVATION	CUYD	4567		4567
20400800	FURNISHED EXCAVATION	CUYD	128		128
21001000	GEOTECHNICAL FABRIC FOR GROUND STABILIZATION	SQYD	12700		12700
25000210	SEEDING, CLASS 2A	ACRE	0.6		0.6
25000400	NITROGEN FERTILIZER NUTRIENT	POUND	53		53
25000500	PHOSPHORUS FERTILIZER NUTRIENT	POUND	53		53
25000600	POTASSIUM FERTILIZER NUTRIENT	POUND	53		53
25100630	EROSION CONTROL BLANKET	SQYD	2864		2864
28000250	TEMPORARY EROSION CONTROL SEEDING	POUND	59		59
30300112	AGGREGATE SUBGRADE IMPROVEMENT 12"	SQYD	12390		12390
31102100	SUBBASE GRANULAR MATERIAL, TYPE C 4"	SQYD	4956		4956
31200500	STABILIZED SUBBASE - HOT-MIX ASPHALT, 4"	SQYD	7434		7434
40600290	BITUMINOUS MATERIALS (TACK COAT)	POUND	1802		1802
40600400	MIXTURE FOR CRACKS, JOINTS, AND FLANGEWAYS	TON	0.5		0.5

\* SPECIALTY ITEMS

MODEL: Default  
FILE NAME: P:\1108\BARDNET\EG\_IL\inois.gov\PWIDOT\Documents\DOT\_Offices\District 3\Projects\ID366150\CADDData\CAD\sheet\ID366150-plc-S002.dgn

USER NAME = corcoranlm	DESIGNED -	REVISED -
	DRAWN -	REVISED -
PLOT SCALE = 100.0000' / in.	CHECKED -	REVISED -
PLOT DATE = 8/17/2018	DATE -	REVISED -

**STATE OF ILLINOIS  
DEPARTMENT OF TRANSPORTATION**

**SUMMARY OF QUANTITIES**

SCALE: SHEET OF SHEETS STA. TO STA.

F.A.I. RTE.	SECTION	COUNTY	TOTAL SHEETS	SHEET NO.
55	((53-2,1)R	LIVINGSTON	31	3
			CONTRACT NO. 66H50	
ILLINOIS FED. AID PROJECT				

MODEL: Default  
 FILE NAME: P:\1108\B&E\BID\ITEC\_illinois.gov.PWD\DOT\Documents\DOT\_Offices\District 3\Projects\ID366150\CADD\DATA\CAD\Sheet\ID366150-PLN-S002.dgn

CODE NO.	ITEM	UNIT	TOTAL QUANTITY	CONSTR. CODE	
				90% FED 10% STATE	
				ROADWAY	
				0004	
				RURAL	
40600745	POLYMERIZED LEVELING BINDER (HAND METHOD), N90	TON	0.8		0.8
40600845	POLYMERIZED LEVELING BINDER (MACHINE METHOD), N90	TON	64		64
40603545	POLYMERIZED HOT-MIX ASPHALT SURFACE COURSE, MIX "D", N90	TON	128		128
42001300	PROTECTIVE COAT	SQYD	12390		12390
42100300	CONTINUOUSLY REINFORCED PORTLAND CEMENT CONCRETE PAVEMENT 10"	SQYD	7434		7434
42100615	PAVEMENT REINFORCEMENT	SQYD	7434		7434
44000100	PAVEMENT REMOVAL	SQYD	7434		7434
44004250	PAVED SHOULDER REMOVAL	SQYD	4956		4956
48101200	AGGREGATE SHOULDERS, TYPE B	TON	292		292
48203100	HOT-MIX ASPHALT SHOULDERS	TON	144		144
48300500	PORTLAND CEMENT CONCRETE SHOULDERS 10"	SQYD	4956		4956
60100060	CONCRETE HEADWALLS FOR PIPE DRAINS	EACH	12		12
60108100	PIPE UNDERDRAINS 4" (SPECIAL)	FOOT	192		192
60108501	PIPE UNDERDRAINS, TYPE 3	FOOT	5576		5576

\* SPECIALTY ITEMS

USER NAME = corcoranim	DESIGNED -	REVISED -	<b>STATE OF ILLINOIS DEPARTMENT OF TRANSPORTATION</b>	<b>SUMMARY OF QUANTITIES</b>				F.A.I. RTE.	SECTION	COUNTY	TOTAL SHEETS	SHEET NO.
	DRAWN -	REVISED -		55	((53-2,1)R	LIVINGSTON	31	4				
PLOT SCALE = 100.0000' / in.	CHECKED -	REVISED -						CONTRACT NO. 66H50				
PLOT DATE = 8/17/2018	DATE -	REVISED -		SCALE:	SHEET	OF	SHEETS	STA.	TO STA.	ILLINOIS FED. AID PROJECT		



MODEL: Default  
 FILE NAME: P:\1108\B&E\BID\NTEC\Illinois.gov\PWIDOT\Documents\DOT\_Offices\District 3\Projects\ID366150\CADDData\CAD\Sheet\ID366150-Plt-S002.dgn

CODE NO.	ITEM	UNIT	TOTAL QUANTITY	CONSTR. CODE	
				ROADWAY	RURAL
				90% FED 10% STATE	
63500105	DELINEATORS	EACH	18		18
64200116	SHOULDER RUMBLE STRIPS, 16 INCH	FOOT	6720		6720
67000400	ENGINEER'S FIELD OFFICE, TYPE A	CALMO	5		5
67100100	MOBILIZATION	LSUM	1		1
70103815	TRAFFIC CONTROL SURVEILLANCE	CALDA	6		6
70300100	SHORT TERM PAVEMENT MARKING	FOOT	1360		1360
70300150	SHORT TERM PAVEMENT MARKING REMOVAL	SQFT	454		454
70300220	TEMPORARY PAVEMENT MARKING - LINE 4"	FOOT	15110		15110
70300240	TEMPORARY PAVEMENT MARKING - LINE 6"	FOOT	1888		1888
70400100	TEMPORARY CONCRETE BARRIER	FOOT	3925		3925
70400200	RELOCATE TEMPORARY CONCRETE BARRIER	FOOT	3900		3900
* 78008210	POLYUREA PAVEMENT MARKING TYPE I - LINE 4"	FOOT	15110		15110
* 78008230	POLYUREA PAVEMENT MARKING TYPE I - LINE 6"	FOOT	1888		1888
* 78100100	RAISED REFLECTIVE PAVEMENT MARKER	EACH	188		188

\* SPECIALTY ITEMS

USER NAME = corcoranim	DESIGNED -	REVISED -
	DRAWN -	REVISED -
PLOT SCALE = 100.0000' / in.	CHECKED -	REVISED -
PLOT DATE = 8/17/2018	DATE -	REVISED -

**STATE OF ILLINOIS  
 DEPARTMENT OF TRANSPORTATION**

**SUMMARY OF QUANTITIES**

SCALE: SHEET OF SHEETS STA. TO STA.

F.A.I. RTE.	SECTION	COUNTY	TOTAL SHEETS	SHEET NO.
55	((53-2.1)R	LIVINGSTON	31	5
			CONTRACT NO. 66H50	
ILLINOIS FED. AID PROJECT				

MODEL: Default  
 FILE NAME: P:\1108\BARDNETEG\_ILIllinois.gov\PWD\DOT\Documents\DOT\_Offices\District 3\Projects\ID366150\CADDData\CAD\Sheet\ID366150-110-500.dgn

CODE NO.	ITEM	UNIT	TOTAL QUANTITY	CONSTR. CODE	
				ROADWAY	RURAL
				90% FED 10% STATE	
78300200	RAISED REFLECTIVE PAVEMENT MARKER REMOVAL	EACH	188		188
X0324159	WHITEWASHING FOR CONCRETE PAVEMENT	SQYD	7434		7434
X0326208	ALTERNATE ROUTE SIGNING	LSUM	1		1
X0327622	REMOVE AND REINSTALL HIGH TENSION CABLE MEDIAN BARRIER	FOOT	2278		2278
X0327980	PAVEMENT MARKING REMOVAL - WATER BLASTING	SQFT	12568		12568
X2700001	TEMPORARY RUMBLE STRIPS (SPECIAL)	EACH	4		4
X4400110	TEMPORARY PAVEMENT REMOVAL	SQYD	2478		2478
X4401198	HOT-MIX ASPHALT SURFACE REMOVAL, VARIABLE DEPTH	SQYD	2668		2668
X6350120	DELINEATOR REMOVAL	EACH	18		18
X7010208	TRAFFIC CONTROL AND PROTECTION, STANDARD 701402 (SPECIAL)	EACH	2		2
X7010600	TRAFFIC CONTROL AND PROTECTION, STANDARD 701406, SPECIAL	LSUM	1		1
X7015005	CHANGEABLE MESSAGE SIGN	CALDA	56		56
X7040125	PINNING TEMPORARY CONCRETE BARRIER	EACH	116		116
* X7830070	GROOVING FOR RECESSED PAVEMENT MARKING 5"	FOOT	15110		15110

\* SPECIALTY ITEMS

USER NAME = corcoranim	DESIGNED -	REVISED -	<b>STATE OF ILLINOIS DEPARTMENT OF TRANSPORTATION</b>	<b>SUMMARY OF QUANTITIES</b>				F.A.I. RTE.	SECTION	COUNTY	TOTAL SHEETS	SHEET NO.
	DRAWN -	REVISED -		55	((53-2,1)R	LIVINGSTON	31	6				
PLOT SCALE = 100.0000' / in.	CHECKED -	REVISED -						CONTRACT NO. 66H50				
PLOT DATE = 8/17/2018	DATE -	REVISED -		SCALE:	SHEET	OF	SHEETS	STA.	TO STA.	ILLINOIS FED. AID PROJECT		

MODEL: Default  
 FILE NAME: P:\1108\B&E\BID\NTEC\Illinois.gov\PWIDOT\Documents\DOT\_Offices\District 3\Projects\ID366150\CADDData\CAD\Sheet\ID366150-Plt-S00.dgn

CODE NO.	ITEM	UNIT	TOTAL QUANTITY	CONSTR. CODE	
				ROADWAY	RURAL
				90% FED 10% STATE	
* X7830074	GROOVING FOR RECESSED PAVEMENT MARKING 7"	FOOT	1888		1888
X9700001	CHANGEABLE MESSAGE SIGN, SPECIAL	CALWEEK	24		24
* X9700002	SMART TRAFFIC MONITORING SYSTEM	CALWEEK	24		24
Z0021400	EXPANSION JOINT (SPECIAL)	FOOT	48		48
Z0062456	TEMPORARY PAVEMENT	SQYD	5223		5223

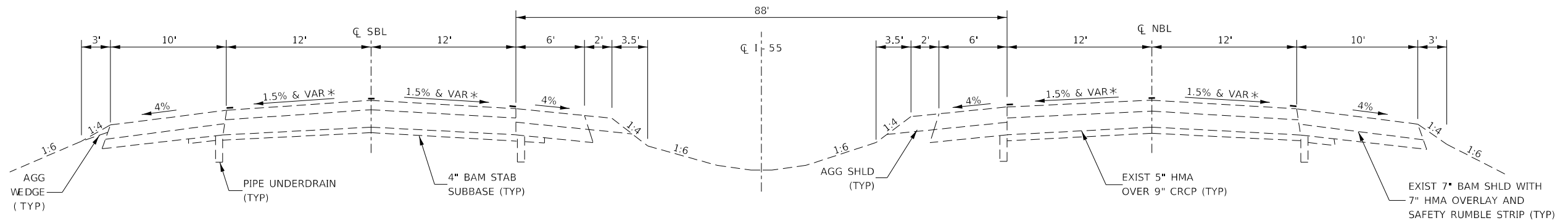
\* SPECIALTY ITEMS

USER NAME = corcoranim	DESIGNED -	REVISED -
	DRAWN -	REVISED -
PLOT SCALE = 100.0000' / in.	CHECKED -	REVISED -
PLOT DATE = 8/17/2018	DATE -	REVISED -

**STATE OF ILLINOIS  
 DEPARTMENT OF TRANSPORTATION**

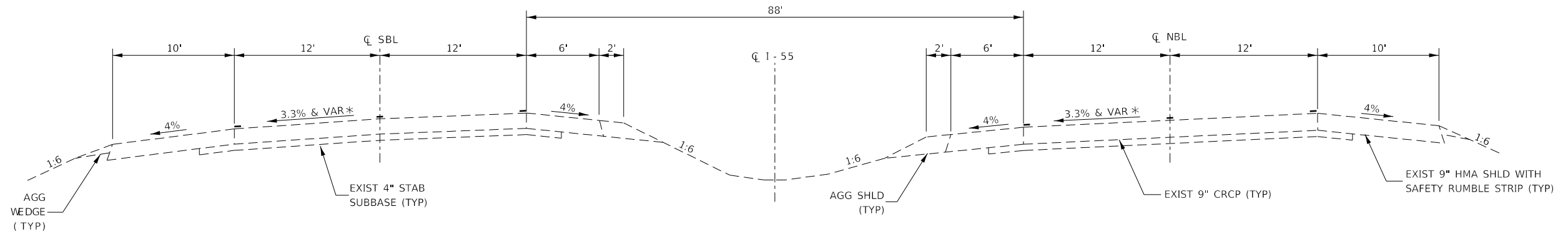
SUMMARY OF QUANTITIES			
SCALE:	SHEET	OF SHEETS	STA. TO STA.

F.A.I. RTE.	SECTION	COUNTY	TOTAL SHEETS	SHEET NO.
55	((53-2,1)R	LIVINGSTON	31	7
			CONTRACT NO. 66H50	
ILLINOIS FED. AID PROJECT				

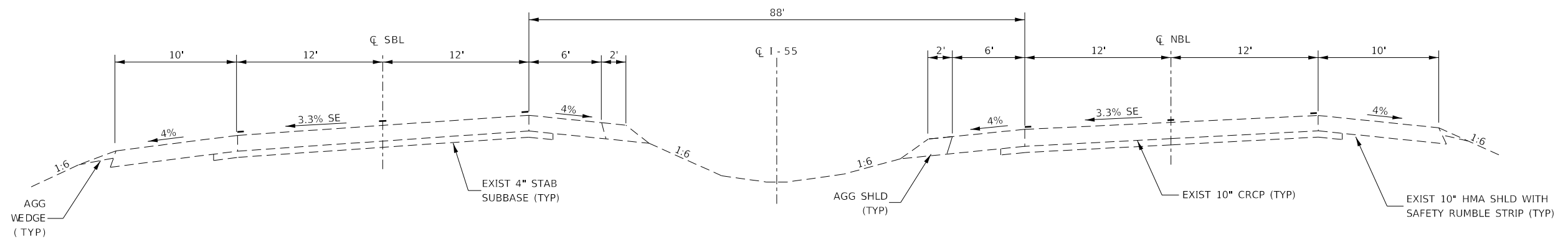


**EXISTING TYPICAL SECTION I-55**  
 STA 652+63.5 TO STA 655+49.43 BK  
 STA EQN: STA 655+49.43 BK = STA 150+05.99 AH

\* PAVEMENT GRADES VARY  
 PER EXIST SE TRANSITION



**EXISTING TYPICAL SECTION I-55**  
 STA 150+05.99 TO STA 163+00 (SECTION 53-2)



**EXISTING TYPICAL SECTION I-55**  
 STA 163+00 TO STA 164+00

MODEL: Default  
 FILE: \\bls01\B&E\BID\NTEC\Illinois\gov\PIV\DOT\Documents\1501\50\CADD\150150\CADD\Sheet\150-53-2\Typical

USER NAME = corcoranlm	DESIGNED -	REVISED -
	DRAWN -	REVISED -
PLOT SCALE = 100.0000' / in.	CHECKED -	REVISED -
PLOT DATE = 8/17/2018	DATE -	REVISED -

**STATE OF ILLINOIS  
 DEPARTMENT OF TRANSPORTATION**

**TYPICAL SECTIONS**

SCALE: SHEET OF SHEETS STA. TO STA.

F.A.I. RTE.	SECTION	COUNTY	TOTAL SHEETS	SHEET NO.
55	(53-2,1)R	LIVINGSTON	31	8
CONTRACT NO. 66H50				
ILLINOIS FED. AID PROJECT				



SEEDING						
STATION	SEEDING CL 2A	TEMP EROSION CONTROL SEEDING	EROSION CONTROL BLANKET	NIT FERT NUT	PHOS FERT NUT	POT FERT NUT
	ACRE	POUND	SQ YD	LB	LB	LB
NB MEDIAN	0.04	4	211	4	4	4
NB OUTSIDE	0.11	11	517	10	10	10
SB MEDIAN	0.15	15	715	13	13	13
SB OUTSIDE	0.29	29	1421	26	26	26
<b>TOTALS</b>	<b>0.59</b>	<b>59</b>	<b>2864</b>	<b>53</b>	<b>53</b>	<b>53</b>

PIPE UNDERDRAIN						
OUTLET STATION	OUTSIDE			MEDIAN		
	PIPE UNDERDRAIN TYPE 3	4" SPL	CONC HDWL	PIPE UNDERDRAIN TYPE 3	4" SPL	CONC HDWL
	FOOT	FOOT	EACH	FOOT	FOOT	EACH
<b>NORTHBOUND</b>						
150+05.99 TO 154+00	394			394		
154+00		17	1		15	1
154+00 TO 159+00	500			500		
159+00		17	1		15	1
159+00 TO 164+00	500			500		
164+00		17	1		15	1
<b>SOUTHBOUND</b>						
150+05.99 TO 154+00	394			394		
154+00		17	1		15	1
154+00 TO 159+00	500			500		
159+00		17	1		15	1
159+00 TO 164+00	500			500		
164+00		17	1		15	1
<b>TOTAL</b>	<b>2788</b>	<b>102</b>	<b>6</b>	<b>2788</b>	<b>90</b>	<b>6</b>

PROJECT TOTALS		
PIPE UNDERDRAIN TYPE 3	5576	FOOT
PIPE UNDERDRAIN 4" SPECIAL	192	FOOT
CONCRETE HEADWALLS	12	EACH

STAGE CONSTRUCTION ITEMS							
LOCATION	LENGTH	TEMPORARY CONCRETE BARRIER	RELOCATE TEMPORARY CONC BARRIER	PINNING TEMP CONC BARRIER	TEMP PVMT	TEMP PVMT REM	PVMT MARK REMOVAL WATER BLAST
		FOOT	FOOT	EACH	SQ YD	SQ YD	SQ FT
<b>PRE-STAGE I</b>							
<b>NORTHBOUND INSIDE:</b>							
649+43.5 TO 655+49.43BK	INSIDE SHLD (TO REMAIN AFTER CONSTRUCTION)	605.93				539	
150+05.99AH TO 164+00	INSIDE SHLD	1394.01				1239	
164+00 TO 166+77.56	INSIDE SHLD (TO REMAIN AFTER CONSTRUCTION)	277.56				247	
<b>SOUTHBOUND INSIDE:</b>							
649+85.94 TO 655+49.43BK	INSIDE SHLD (TO REMAIN AFTER CONSTRUCTION)	563.49				501	
150+05.99AH TO 164+00	INSIDE SHLD	1394.01				1239	
164+00 TO 167+20	INSIDE SHLD (TO REMAIN AFTER CONSTRUCTION)	320				284	
<b>NORTHBOUND OUTSIDE:</b>							
649+78.5 TO 652+63.5	OUTSIDE SHLD (TO REMAIN AFTER CONSTRUCTION)	285				317	
652+63.5 TO 164+00	OUTSIDE SHLD (NO WORK)						
164+00 TO 166+42.56	OUTSIDE SHLD (TO REMAIN AFTER CONSTRUCTION)	242.56				270	
<b>SOUTHBOUND OUTSIDE:</b>							
650+20.94 TO 652+63.5	OUTSIDE SHLD (TO REMAIN AFTER CONSTRUCTION)	242.56				270	
652+63.5 TO 164+00	OUTSIDE SHLD (NO WORK)						
164+00 TO 166+85	OUTSIDE SHLD (TO REMAIN AFTER CONSTRUCTION)	285				317	
<b>STAGE I</b>							
<b>NORTHBOUND:</b>							
634+43.5 TO 652+63.5	START OF LANE CLOSURE TAPER - CL REMOVAL	1820					228
649+43.5 TO 166+77.56	INSIDE EDGE LINE REMOVAL	2277.5					759
650+13.5 TO 652+38.5	BARRIER WALL TAPER	225	225				
652+38.5 TO 655+49.43	BARRIER WALL - TANGENT	310.93	310.93				
150+05.99 TO 164+32.56	BARRIER WALL - TANGENT, PINNED	1426.57	1426.57	116			
<b>SOUTHBOUND:</b>							
652+30.94 TO 164+25	BARRIER WALL - TANGENT	1737.5	1737.5				
164+25 TO 166+50	BARRIER WALL TAPER	225	225				
649+85.94 TO 167+20	INSIDE EDGE LINE REMOVAL	2277.5					759
164+00 TO 182+20	START OF LANE CLOSURE TAPER - CL REMOVAL	1820					228
<b>STAGE II</b>							
<b>NORTHBOUND:</b>							
649+78.5 TO 166+42.56	OUTSIDE EDGE LINE REMOVAL	2207.5					736
650+26 TO 652+38.5	RELOCATED BARRIER WALL TAPER	212.5		212.5			
652+38.5 TO 164+32.56	RELOCATED BARRIER WALL - TANGENT	1737.5		1737.5			
150+05.99AH TO 164+00	INSIDE SHLD	1394.01				1239	
<b>SOUTHBOUND:</b>							
652+30.94 TO 164+25	RELOCATED BARRIER WALL - TANGENT	1737.5		1737.5			
164+25 TO 166+37.5	RELOCATED BARRIER WALL TAPER	212.5		212.5			
650+20.94 TO 166+85	OUTSIDE EDGE LINE REMOVAL	2207.5					736
150+05.99AH TO 164+00	INSIDE SHLD	1394.01				1239	
<b>TOTALS</b>			3925	3900	116	5223	2478
							3446

EARTHWORK SCHEDULE					
LOCATION	EARTH EXCAVATION (CUT)	EARTH EXC SUITABLE FOR FILL	EARTHWORK ADJUSTED FOR SHRINKAGE	FILL	FURNISHED EXCAVATION
	CU YD	CU YD			CU YD
<b>NORTHBOUND:</b>					
652+63.5 TO 164+00	2314	21	16	65	49
<b>SOUTHBOUND:</b>					
652+63.5 TO 164+00	2253	43	32	111	79
<b>TOTAL</b>	<b>4567</b>				<b>128</b>

ASSUME SHRINKAGE FACTOR - 25% EARTH EXCAVATION PAY ITEMS

MODEL: Default  
FILE: \\s:\p\66h50\B&E\BIDD\TEC\Illinois\gov\PIVDOT\Documents\BIDD\Office\BIDD\T\3\Project\66H50\CADDData\CAD\Sheet\0366H50-Plc-schedule.dgn

USER NAME = corcoranlm	DESIGNED -	REVISED -
	DRAWN -	REVISED -
PLOT SCALE = 100.0000 ' / in.	CHECKED -	REVISED -
PLOT DATE = 8/17/2018	DATE -	REVISED -

**STATE OF ILLINOIS  
DEPARTMENT OF TRANSPORTATION**

**SCHEDULES**

SCALE: SHEET OF SHEETS STA. TO STA.

F.A.I. RTE.	SECTION	COUNTY	TOTAL SHEETS	SHEET NO.
55	(53-2,1)R	LIVINGSTON	31	10
CONTRACT NO. 66H50				
ILLINOIS FED. AID PROJECT				

CONCRETE REPLACEMENT SCHEDULE															
STA TO STA	LENGTH FOOT	PVMT AREA SQ YD	PVMT REM SQ YD	CRC PVMT 10" SQ YD	PVMT REINF SQ YD	PROT COAT SQ YD	STABILIZED SUBBASE HMA 4" SQ YD	WHITE WASHING CONC PVMT SQ YD	PAVED SHLD REM SQ YD	PCC SHLD 10" SQ YD	SUBBASE GRAN MAT TY C 4" SQ YD	AGG SUBGRADE IMPROVEMENT 12" SQ YD	GEOTECH FABRIC FOR GROUND STABILIZATION SQ YD	SHLD RUMBLE STRIPS 16" FOOT	AGG SHLD TY B TON
NORTHBOUND:															
150+05.99 TO 164+00	1394.01	3717	3717	3717	3717	6195	3717	3717	2478	2478	2478	6195	6350	2788	136
SOUTHBOUND:															
150+05.99 TO 164+00	1394.01	3717	3717	3717	3717	6195	3717	3717	2478	2478	2478	6195	6350	2788	136
TOTAL			7434	7434	7434	12390	7434	7434	4956	4956	4956	12390	12700	5576	272

RESURFACING SCHEDULE												
LOCATION STA TO STA	LENGTH FOOT	PVMT AREA SQ YD	POLY HMA SURF CSE TON	POLY HMA LEVEL BIND (MM) TON	HMA SURF REM, VAR DEPTH SQ YD	BIT MAT (TACK COAT) LB	MIX FOR CRACKS, JOINTS & FLGWYS TON	POLY LEVEL BINDER (HM) TON	HMA SHLD TON	SHLD RUMBLE STRIPS 16" FOOT	AGG SHLD TY B TON	
NORTHBOUND:												
652+63.5 TO 655+49.43	285.93	762.5	64	32	1334	901	0.23	0.38	72.1	572	10	
SOUTHBOUND:												
652+63.5 TO 655+49.43	285.93	762.5	64	32	1334	901	0.23	0.38	72.1	572	10	
TOTAL	571.86	1525	128	64	2668	1802	0.46	0.76	144.2	1144	20	

EXPANSION JOINT (SPECIAL)	
LOCATION	FOOT
150+05.99 TO 150+20.99 NB	24
150+05.99 TO 150+20.99 SB	24
TOTAL	48

NOTE: AT STA 164+00, PROP CRC SHALL BE TIED TO EXISTING PAVEMENT AS SHOWN IN STANDARD 442001

REM & REPL HIGH TENSION CABLE MEDIAN BARRIER	
LOCATION	FOOT
649+85.94 TO 167+20, SB INSIDE	2277.5
TOTAL	2277.5

REM & REPL ONLY IF NEEDED TO PREFORM WORK

PAVEMENT MARKING SCHEDULE																		
LOCATION	LENGTH FT	POLYUREA MARKING - TY 1			GROOVING FOR RECESSED PVMT MARKING		TEMPORARY PVMT MARKING			RAISED REFL PVMT MARK EACH	RAISED REFL PVMT MK REM EACH	SHORT TERM PAVEMENT MARKING		SHORT TERM PVMT MARK REM SQ FT	PVMT MARK REMOVAL WATER BLASTING SQ FT	DELINEATOR EACH	DELINEATOR REMOVAL EACH	
		4"		6"	5"		7"	4"				6"	WHITE					YELLOW
		WHITE	YELLOW	WHITE	5"	7"	WHITE	YELLOW	WHITE									
NORTHBOUND																		
634+43.5 TO 166+77.56	PROP MARKING LINES	3777.5	3777.5	3777.5	944	7555	944	3777.5	3777.5	944	94	94	529	151	227	2990	9	9
164+00 TO 166+77.56	ADD'L CENTERLINE REM	277.56														35		
634+43.5 TO 649+43.5	ADD'L INSIDE EOP REM	1500														750		
634+43.5 TO 649+78.5	ADD'L OUTSIDE EOP REM	1535														768		
166+42.56 TO 166+77.56	ADD'L OUTSIDE EOP REM	35														18		
SOUTHBOUND																		
649+85.94 TO 182+20	PROP MARKING LINES	3777.5	3777.5	3777.5	944	7555	944	3777.5	3777.5	944	94	94	529	151	227	2990	9	9
649+85.94 TO 652+63.5	ADD'L CENTERLINE REM	277.56														35		
167+20 TO 182+20	ADD'L INSIDE EOP REM	1500														750		
649+85.94 TO 650+20.94	ADD'L OUTSIDE EOP REM	35														18		
166+85 TO 182+20	ADD'L OUTSIDE EOP REM	1535														768		
SUBTOTALS			7555	7555	1888	15110	1888	7555	7555	1888	188	188	1058	302	454	9122	18	18
TOTALS			15110	15110	3776	30220	3776	15110	15110	3776	376	376	2116	602	907	18244	36	36

STA EQ - 655+49.43(BK) = 150+05.99(AH)

MODEL: Default  
FILE: \\hul08a\BIBID\ITC\Illinois\gov\pwr\BIBID\Documents\BIBID - Office\BIBID\3\Projects\0366\H50\CADDData\CAD\Sheet\0366\H50-Plc-schedule.dgn

USER NAME = corcoranlm	DESIGNED -	REVISED -
	DRAWN -	REVISED -
PLOT SCALE = 100.0000' / in.	CHECKED -	REVISED -
PLOT DATE = 8/17/2018	DATE -	REVISED -

STATE OF ILLINOIS  
DEPARTMENT OF TRANSPORTATION

SCHEDULES

SCALE: SHEET OF SHEETS STA. TO STA.

F.A.I. RTE.	SECTION	COUNTY	TOTAL SHEETS	SHEET NO.
55	(53-2,1)R	LIVINGSTON	31	11
CONTRACT NO. 66H50				
ILLINOIS FED. AID PROJECT				

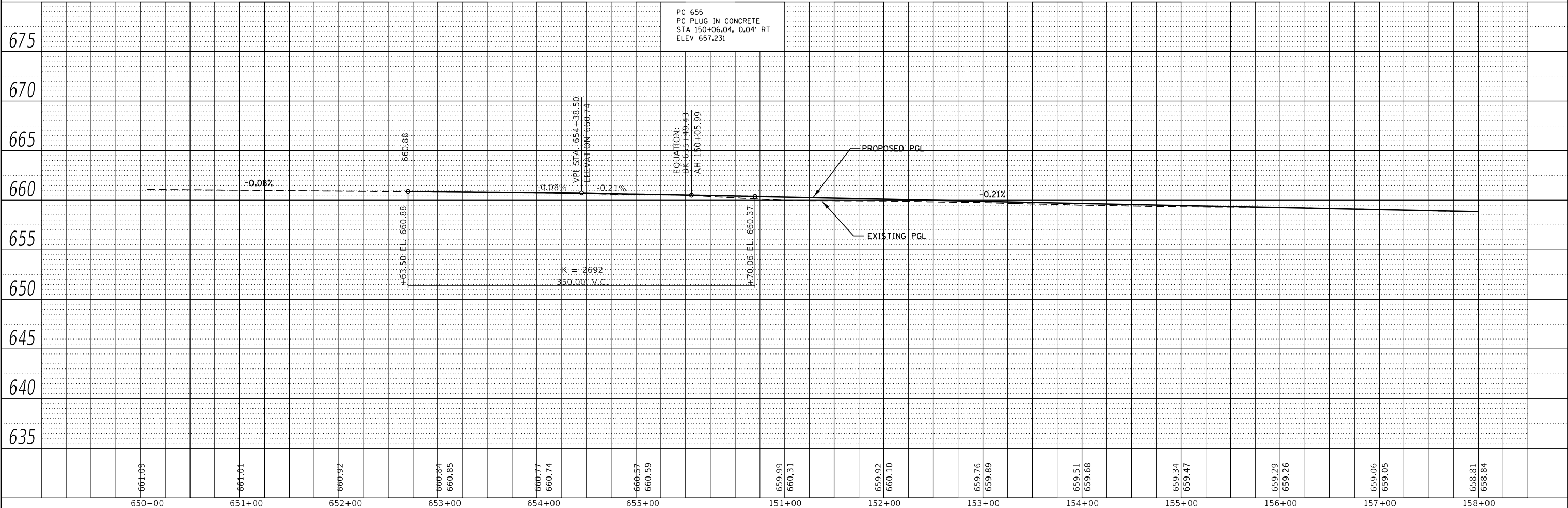
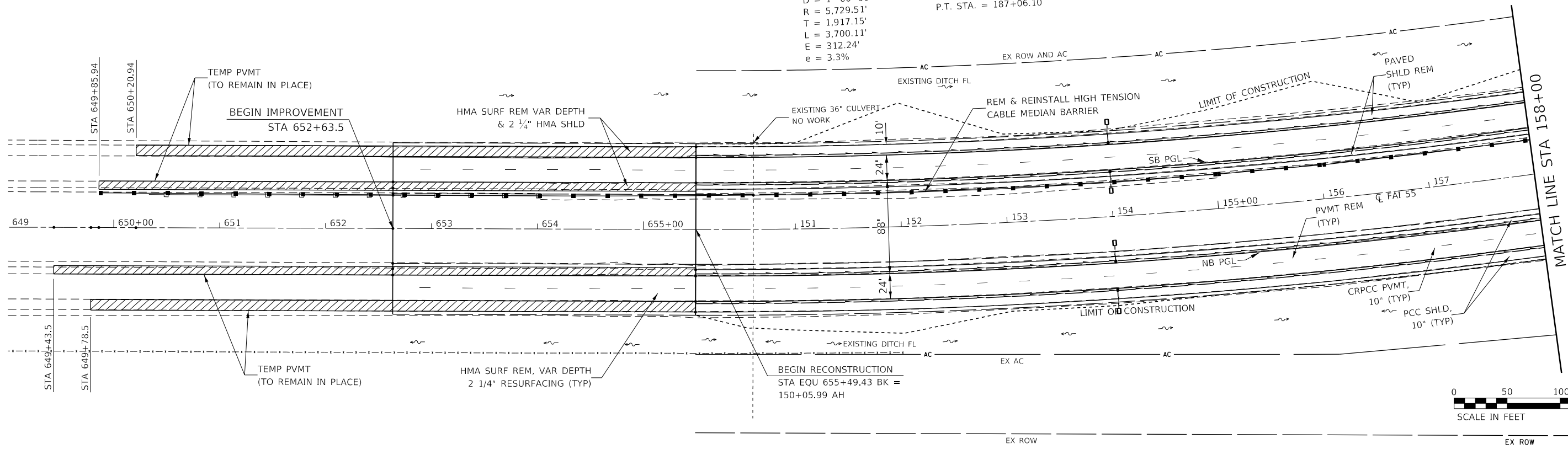
PLAN	SURVEYED	DATE
	PLOTTED	BY
	ALIGNED	
	CHECKED	
	FILE NAME	
	NO.	

PROFILE	SURVEYED	DATE
	PLOTTED	BY
	GRADES	
	CHECKED	
	STRUCTURE	
	NOTATION	
	NO.	

MODEL: Default  
 FILE NAME: p:\1108\BID\BID\TEG\Illinois\spw\PWD\DOT\Documents\DOT - Office\Bldg\3\projects\366150\CAD\Drawings\366150-site-plan.rdg

EXIST. CURVE EXCL\_155\_3  
 PI STA. = 169+23.14  
 $\Delta = 37^\circ 00' 05''$  (LT)  
 D = 1° 00' 00"  
 R = 5,729.51'  
 T = 1,917.15'  
 L = 3,700.11'  
 E = 312.24'  
 e = 3.3%

T.R. = 45'  
 S.E. RUN = 150'  
 P.C. STA. = 150+05.99  
 P.T. STA. = 187+06.10



USER NAME = corcoranlm	DESIGNED -	REVISED -
	DRAWN -	REVISED -
PLOT SCALE = 100,0000' / in.	CHECKED -	REVISED -
PLOT DATE = 8/17/2018	DATE -	REVISED -

**STATE OF ILLINOIS  
 DEPARTMENT OF TRANSPORTATION**

<b>PLAN &amp; PROFILE</b>	
SCALE:	SHEET OF SHEETS STA. TO STA.

F.A.J. RTE.	SECTION	COUNTY	TOTAL SHEETS	SHEET NO.
55	(53-2,1)R	LIVINGSTON	31	12
CONTRACT NO. 66H50				
ILLINOIS		FED. AID PROJECT		

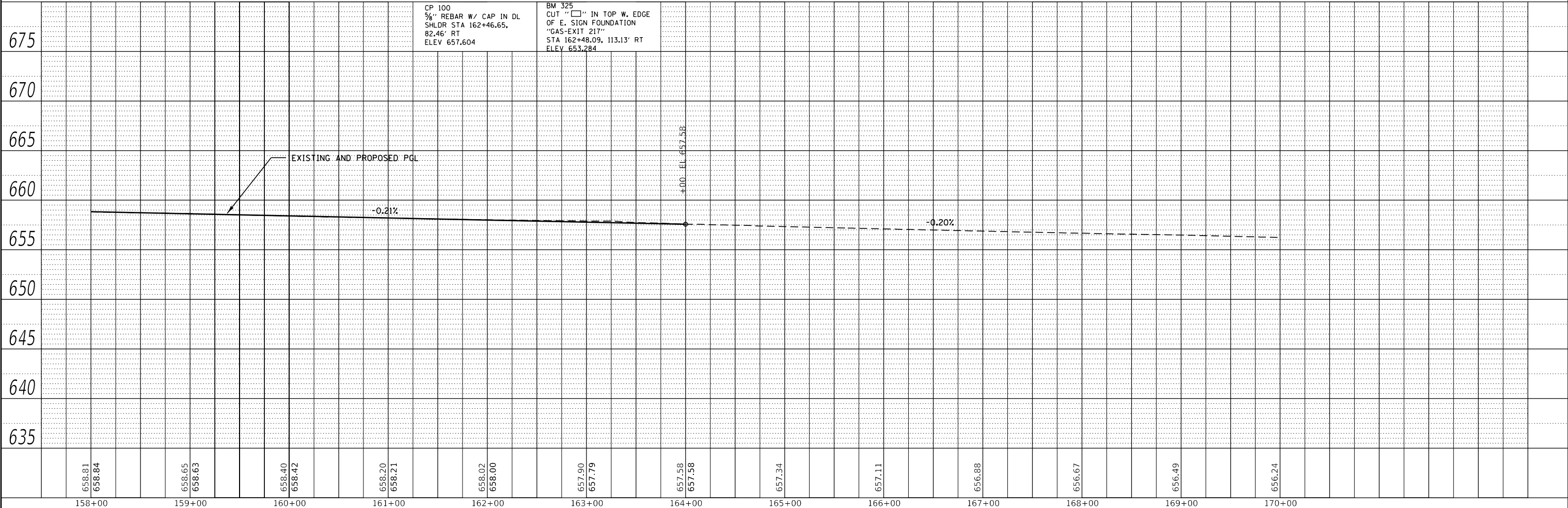
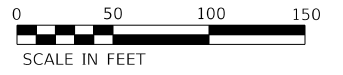
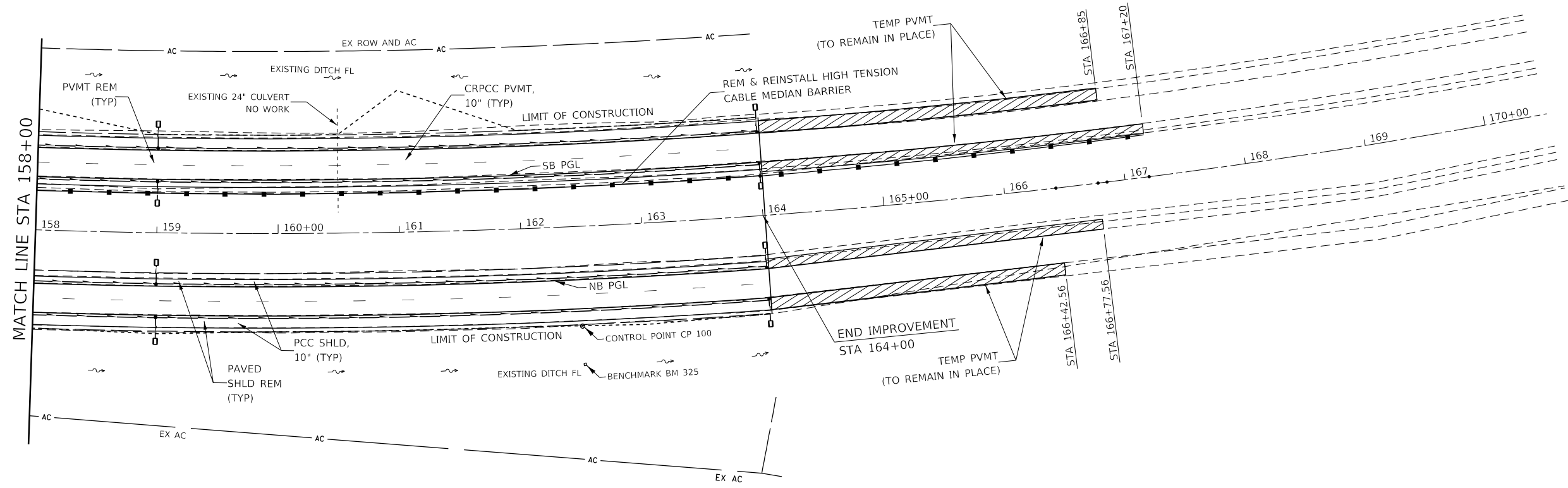




PLAN	SURVEYED	DATE
	PLOTTED	
	ALIGNMENT CHECKED	
	GRADES CHECKED	
	STRUCTURE NOTATIONS CHECKED	
	NOTE BOOK NO.	
	CADD FILE NAME	

PROFILE	SURVEYED	DATE
	PLOTTED	
	GRADES CHECKED	
	STRUCTURE NOTATIONS CHECKED	
	NOTE BOOK NO.	
	CADD FILE NAME	

MODEL: Default  
 FILE NAME: p:\1108\BID\NTE\Illinois\spw\PWD\DOT\Documents\DOT Office\Sheet\3\projects\366150\CADD\Sheet\366150-site-plan.rdg



CP 100  
 3/8" REBAR W/ CAP IN DL  
 SHLDR STA 162+46.65,  
 82.46' RT  
 ELEV 657.604

BM 325  
 CUT "□" IN TOP W. EDGE  
 OF E. SIGN FOUNDATION  
 "GAS-EXIT 217"  
 STA 162+48.09, 113.13' RT  
 ELEV 653.284

USER NAME = corcoranlm	DESIGNED -	REVISED -
	DRAWN -	REVISED -
PLOT SCALE = 100,0000' / in.	CHECKED -	REVISED -
PLOT DATE = 8/17/2018	DATE -	REVISED -

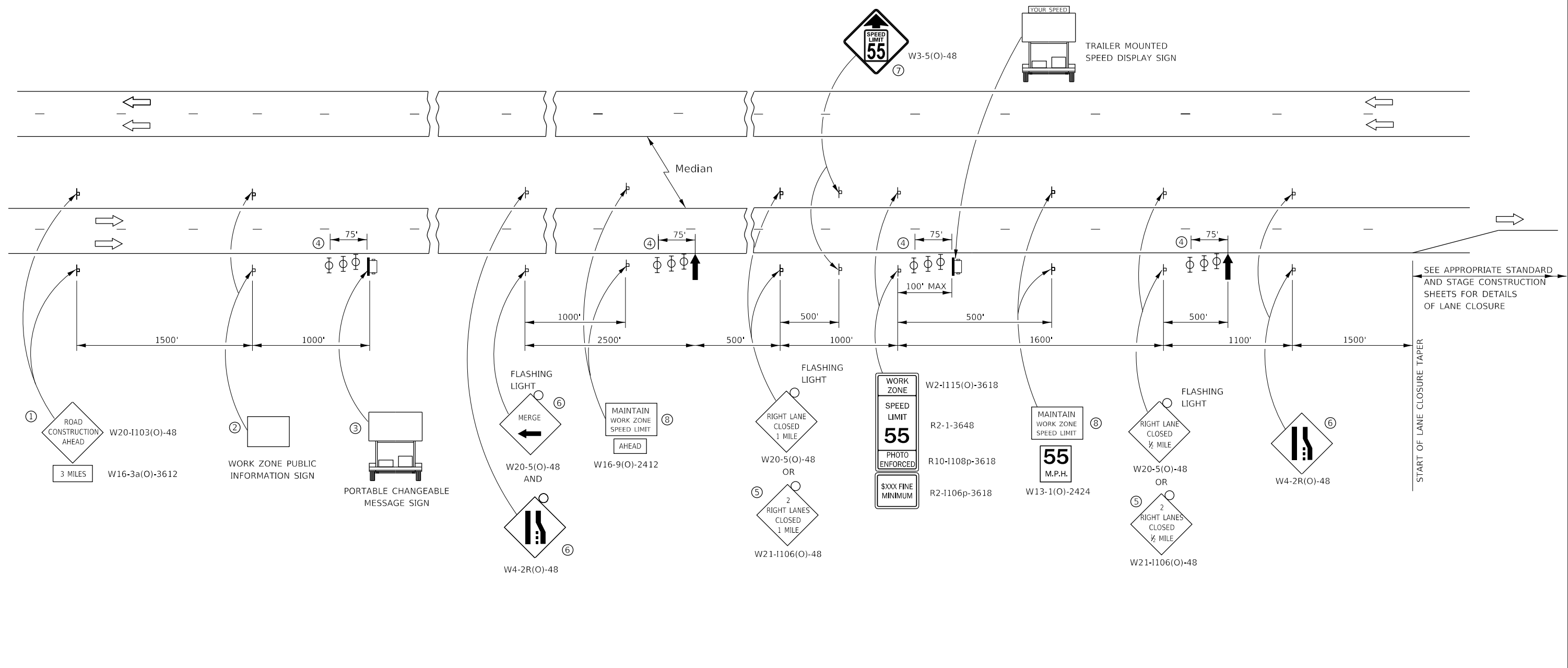
**STATE OF ILLINOIS  
 DEPARTMENT OF TRANSPORTATION**

<b>PLAN &amp; PROFILE</b>			
SCALE:	SHEET	OF SHEETS	STA. TO STA.

F.A.J. RTE.	SECTION	COUNTY	TOTAL SHEETS	SHEET NO.
55	(53-2,1)R	LIVINGSTON	31	13
CONTRACT NO. 66H50				
ILLINOIS FED. AID PROJECT				



MODEL: Default  
 FILE: \\nas01c.psu.edu\B\BID\NTEC\Illinois\gov\PI\DOT\Documents\DOT\_Offices\Director\_3\Projects\0366150\CADD\Sheet\CAD\Sheet\0366150-Plc-detailed.dgn

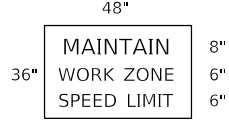


SEE APPROPRIATE STANDARD AND STAGE CONSTRUCTION SHEETS FOR DETAILS OF LANE CLOSURE

START OF LANE CLOSURE TAPER

- ① THE ROAD CONSTRUCTION AHEAD SIGN SHALL BE LOCATED 3 MILES IN ADVANCE OF THE PROJECT LIMITS.
- ② THE MESSAGE AND SIZE OF THE WORK ZONE PUBLIC INFORMATION SIGN SHALL BE AS SPECIFIED BY THE DEPARTMENT.
- ③ TO BE PLACED IN THE MEDIAN WHEN FEASIBLE. THE MESSAGE BOARD SHALL BE USED TO DISPLAY STATUS OF LANES WITHIN THE PROJECT. THE PRIMARY MESSAGES SHALL BE:  
 "RIGHT LANE CLOSED" / " x MILES AHEAD"  
 "LEFT LANE CLOSED" / " x MILES AHEAD"  
 "ALL LANES OPEN"
- ④ THREE, TYPE II BARRICADES, DRUMS, OR VERTICAL BARRICADES AT 25' CENTERS.
- ⑤ THIS SIGN SHALL BE USED WHEN 2 LANES ARE CLOSED.
- ⑥ WHEN THE LEFT LANE IS CLOSED, SWITCH THESE TWO SIGNS AND THE DIRECTION OF THE MERGE ARROW.
- ⑦ THIS SIGN SHALL ONLY BE USED IF THE EXISTING SPEED LIMIT IS GREATER THAN 65 MPH.

⑧ 48"x36" FLUORESCENT ORANGE SIGN WITH BLACK LETTERS.



- ↑ ARROW BOARD
- ☐ PORTABLE CHANGEABLE MESSAGE SIGN
- ⊥ SIGN
- ⊕ TYPE II BARRICADE, DRUM, OR VERTICAL BARRICADE WITH MONODIRECTIONAL FLASHING LIGHT

**GENERAL NOTE:**

THIS STANDARD IS USED ANY TIME STANDARD 701406 IS IN PLACE.

WHEN THE LEFT LANE IS CLOSED, LEFT LANE CLOSED SIGNS SHALL BE SUBSTITUTED FOR THE RIGHT LANE CLOSED SIGNS.

THE FIRST TWO SIGNS AND THE MESSAGE BOARD ARE STATIONARY. THE OTHER SIGNS AND ARROWBOARDS SHALL BE MOVED AS NECESSARY TO MAINTAIN THE REQUIRED DISTANCE FROM THE START OF THE LANE CLOSURE TAPER(S).

SEE SPECIAL PROVISIONS.

ALL DIMENSIONS ARE IN INCHES UNLESS OTHERWISE SHOWN.

USER NAME = corcoranlm	DESIGNED -	REVISED -
	DRAWN -	REVISED -
PLOT SCALE = 100,0000' / in.	CHECKED -	REVISED -
PLOT DATE = 8/17/2018	DATE -	REVISED -

**STATE OF ILLINOIS  
 DEPARTMENT OF TRANSPORTATION**

**STANDARD 701400 (SPECIAL) WEEKDAY  
 STAGING PLANS**

SCALE: SHEET OF SHEETS STA. TO STA.

F.A.I. RTE.	SECTION	COUNTY	TOTAL SHEETS	SHEET NO.
55	(53-2,1)R	LIVINGSTON	31	15
CONTRACT NO. 66H50			ILLINOIS FED. AID PROJECT	







**DETAIL A**

INTERSECTION E 2600 N RD & OR 66

MODEL: Default  
 FILE: \\nas01c.psu.edu\B&E\BID\NTEC\Illinois\gov\PIV\DOT\Documents\1\DOT\_Offices\DI\erict 3\Projects\03366150\CADD\Drawings\CAD\Sheet\03366150-PIV-detail.dwg

USER NAME = corcoranlm	DESIGNED -	REVISED -
	DRAWN -	REVISED -
PLOT SCALE = 100,0000' / in.	CHECKED -	REVISED -
PLOT DATE = 8/17/2018	DATE -	REVISED -

**STATE OF ILLINOIS  
DEPARTMENT OF TRANSPORTATION**

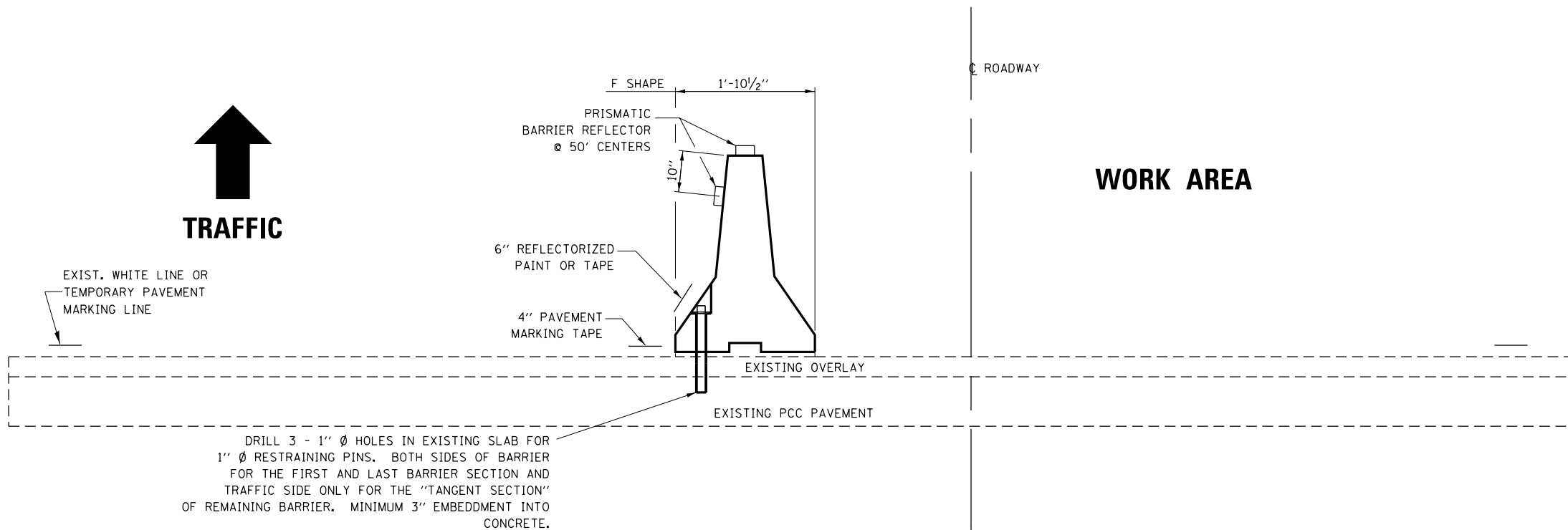
<b>ALTERNATE ROUTE</b>			
SCALE:	SHEET	OF SHEETS	STA. TO STA.

F.A.I. RTE.	SECTION	COUNTY	TOTAL SHEETS	SHEET NO.
55	(53-2,1)R	LIVINGSTON	31	18
CONTRACT NO. 66H50				
ILLINOIS FED. AID PROJECT				









DRILL 3 - 1" Ø HOLES IN EXISTING SLAB FOR 1" Ø RESTRAINING PINS. BOTH SIDES OF BARRIER FOR THE FIRST AND LAST BARRIER SECTION AND TRAFFIC SIDE ONLY FOR THE "TANGENT SECTION" OF REMAINING BARRIER. MINIMUM 3" EMBEDMENT INTO CONCRETE.

**TEMPORARY CONCRETE BARRIER**

**NOTES:**

1. THE CONTRACTOR HAS THE OPTION OF USING EITHER THE LINE ON THE TEMPORARY CONCRETE BARRIER OR ON THE PAVEMENT.
2. THE COLOR OF THE REFLECTORS AND PAVEMENT/BARRIER MARKING LINE WILL VARY WITH STAGING AND SHALL MATCH THE EXISTING LINE IN THE WORK AREA.
3. THE COST OF THE REFLECTORS AND THE PAVEMENT/BARRIER MARKING LINE IS INCLUDED IN THE COST OF THE TEMPORARY CONCRETE BARRIER.

**TRAFFIC CONTROL DETAIL  
FOR TEMPORARY CONCRETE BARRIER**

MODEL: Default  
 FILE NAME: p:\u0008\B&E\BIDD\ITEC\Illinois\gov\PI\DOT\Documents\1\DOT\_Offices\Director\_3\Projects\03366150\CADD\Data\CAD\Sheet\03366150-Plc-detailed.dgn

USER NAME = corcoranlm	DESIGNED -	REVISED -
	DRAWN -	REVISED -
PLOT SCALE = 100,0000 ' / in.	CHECKED -	REVISED -
PLOT DATE = 8/17/2018	DATE -	REVISED -

**STATE OF ILLINOIS  
DEPARTMENT OF TRANSPORTATION**

**DETAILS**

SCALE: SHEET OF SHEETS STA. TO STA.

F.A.I. RTE.	SECTION	COUNTY	TOTAL SHEETS	SHEET NO.
55	(53-2,1)R	LIVINGSTON	31	21
CONTRACT NO. 66H50				
ILLINOIS FED. AID PROJECT				

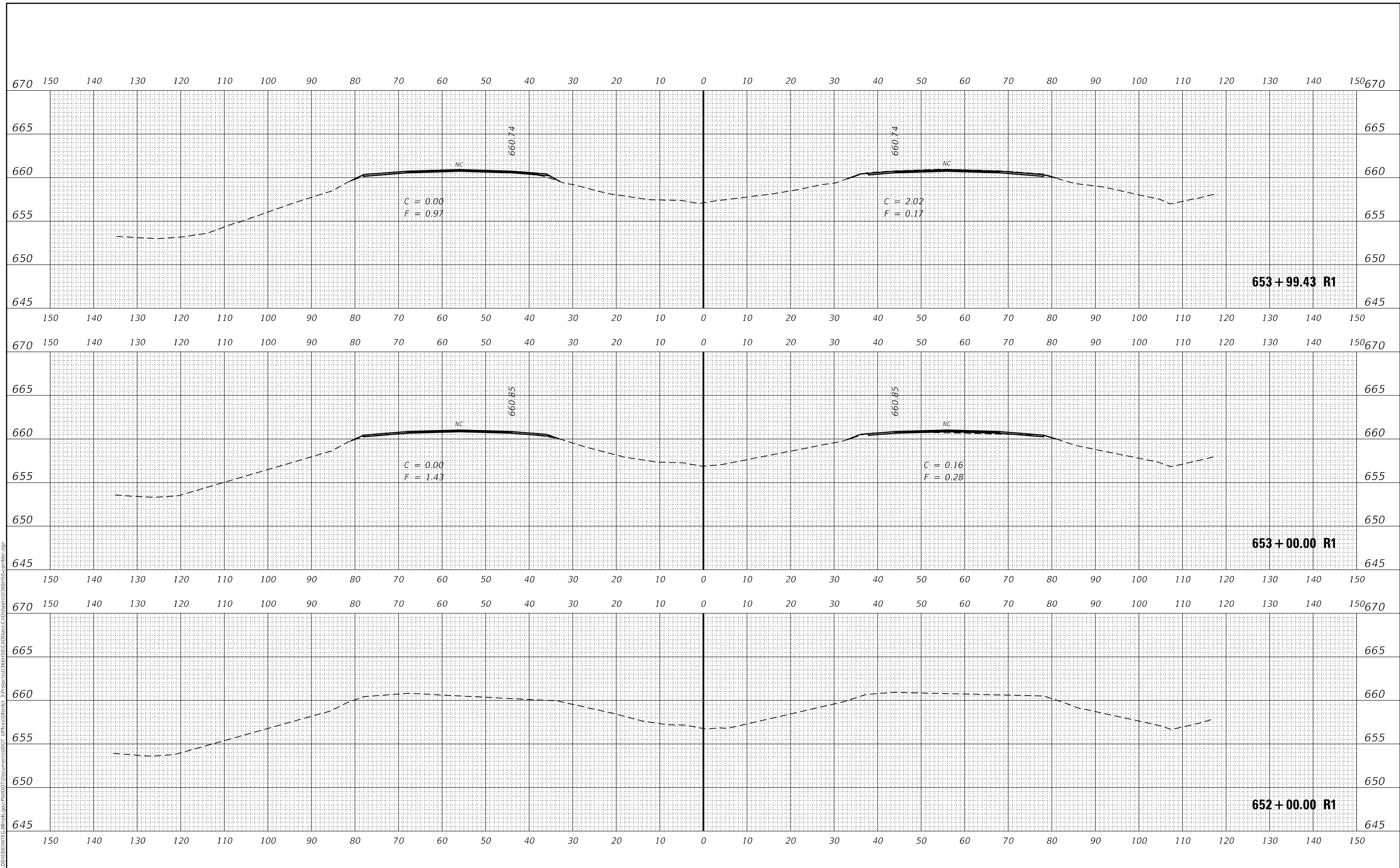




DATE	
BY	
SURVEYED	
PLOTTED	
TEMPLATE	
NOTE BOOK	
AREAS CHECKED	
NO.	

DATE	
BY	
SURVEYED	
PLOTTED	
TEMPLATE	
NOTE BOOK	
AREAS CHECKED	
NO.	

MODEL: Final Cross Sections  
 FILE NAME: \\paul@hilton.com\Illinois\pwr\DOT\Documents\DOT\Office\District 3\Projects\66H50\CAD\Drawings\66H50-CrossSec.dgn



USER NAME = corcoranlm	DESIGNED -	REVISED -
	DRAWN -	REVISED -
PLOT SCALE = 20.0000' / in.	CHECKED -	REVISED -
PLOT DATE = 8/17/2018	DATE -	REVISED -

**STATE OF ILLINOIS  
DEPARTMENT OF TRANSPORTATION**

<b>CROSS SECTIONS</b>			
SCALE:	SHEET	OF	SHEETS
			STA. 652+00.00 R1 TO STA. 653+99.43 R1

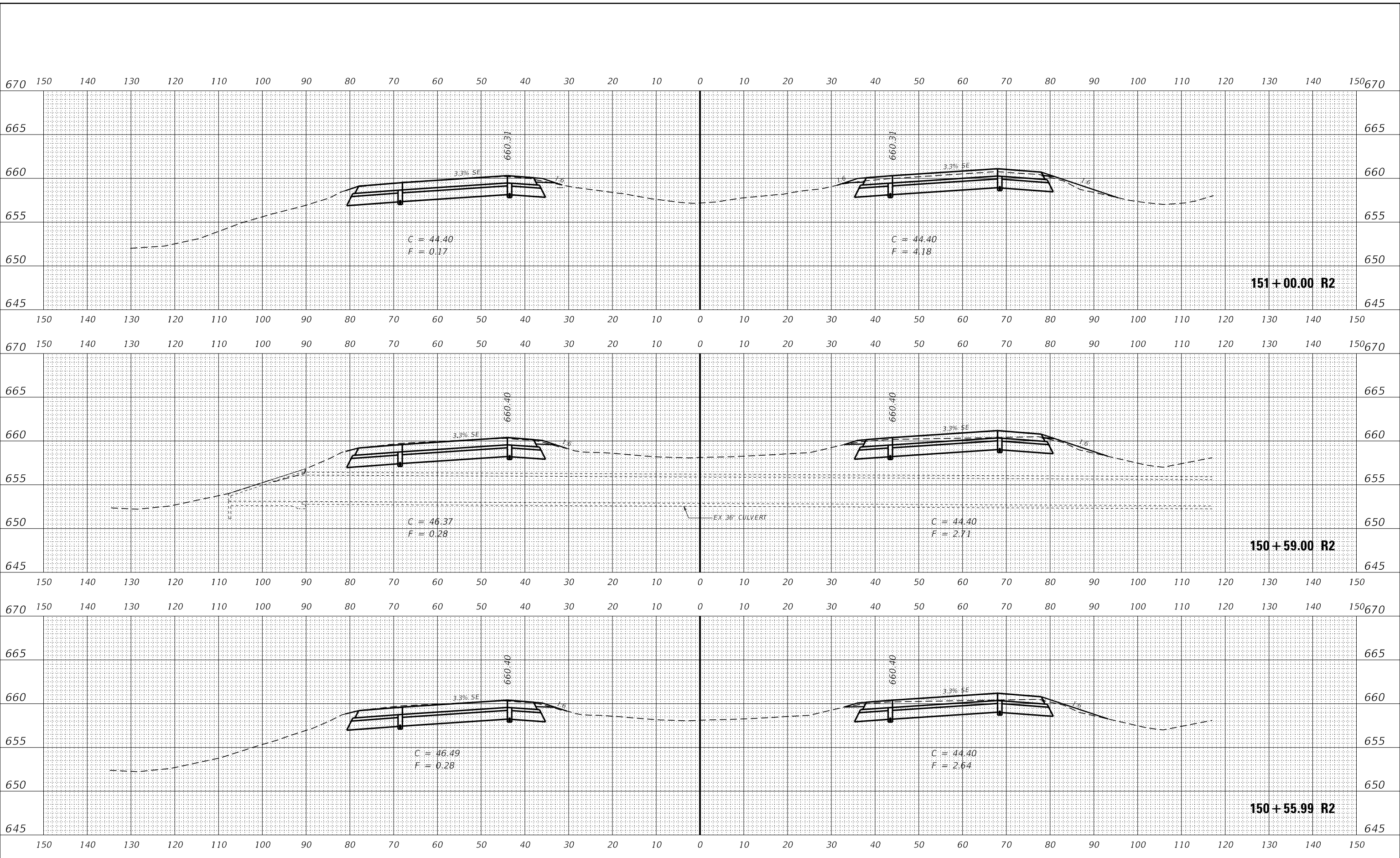
F.A.J. RTE.	SECTION	COUNTY	TOTAL SHEETS	SHEET NO.
55	(53-2,1)R	LIVINGSTON	31	24
				CONTRACT NO. 66H50
				ILLINOIS FED. AID PROJECT



DATE	
BY	
FINAL SURVEY	SURVEYED
NOTE BOOK	PLOTTED
NO.	TEMPLATE
	AREAS CHECKED
	AREAS CHECKED

DATE	
BY	
ORIGINAL SURVEY	SURVEYED
NOTE BOOK	PLOTTED
NO.	TEMPLATE
	AREAS CHECKED
	AREAS CHECKED

MODEL: Final Cross Sections  
 FILE NAME: p:\work\66H50\66H50\Drawings\DOT Documents\DOT Office\Drawings\66H50\66H50-CrossSec.dgn



USER NAME = corcoranlm	DESIGNED -	REVISED -
	DRAWN -	REVISED -
PLOT SCALE = 20.0000' / in.	CHECKED -	REVISED -
PLOT DATE = 8/17/2018	DATE -	REVISED -

**STATE OF ILLINOIS  
 DEPARTMENT OF TRANSPORTATION**

<b>CROSS SECTIONS</b>			
SCALE:	SHEET	OF	SHEETS
			STA. 150+55.99 R2 TO STA. 151+00.00 R2

F.A.J. RTE.	SECTION	COUNTY	TOTAL SHEETS	SHEET NO.
55	(53-2,1)R	LIVINGSTON	31	26
CONTRACT NO. 66H50				
ILLINOIS FED. AID PROJECT				



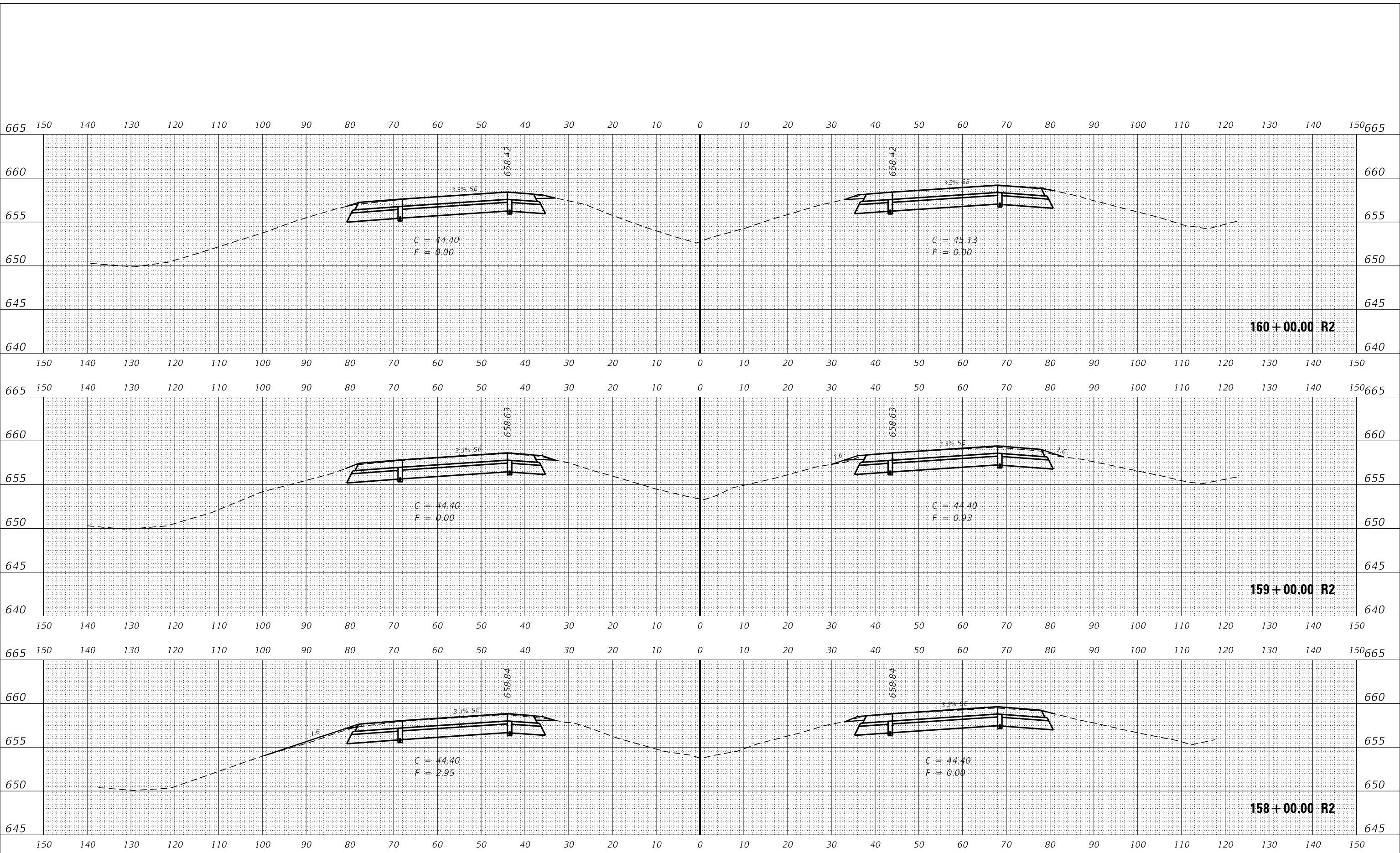




DATE	
BY	
FINAL SURVEY	SURVEYED
NOTE BOOK	PLOTTED
NO.	TEMPLATE
	AREAS CHECKED

DATE	
BY	
ORIGINAL SURVEY	SURVEYED
NOTE BOOK	PLOTTED
NO.	TEMPLATE
	AREAS CHECKED

MODEL: Final Cross Sections  
 FILE NAME: D:\0418\BID\13\_ILLINOIS\pwr\WID\Documents\DOT\Office\District\_3\Projects\366H50\CAD\Drawings\366H50-crossbar.dgn



USER NAME = corcoranlm	DESIGNED -	REVISED -
	DRAWN -	REVISED -
PLOT SCALE = 20.0000' / in.	CHECKED -	REVISED -
PLOT DATE = 8/17/2018	DATE -	REVISED -

**STATE OF ILLINOIS  
DEPARTMENT OF TRANSPORTATION**

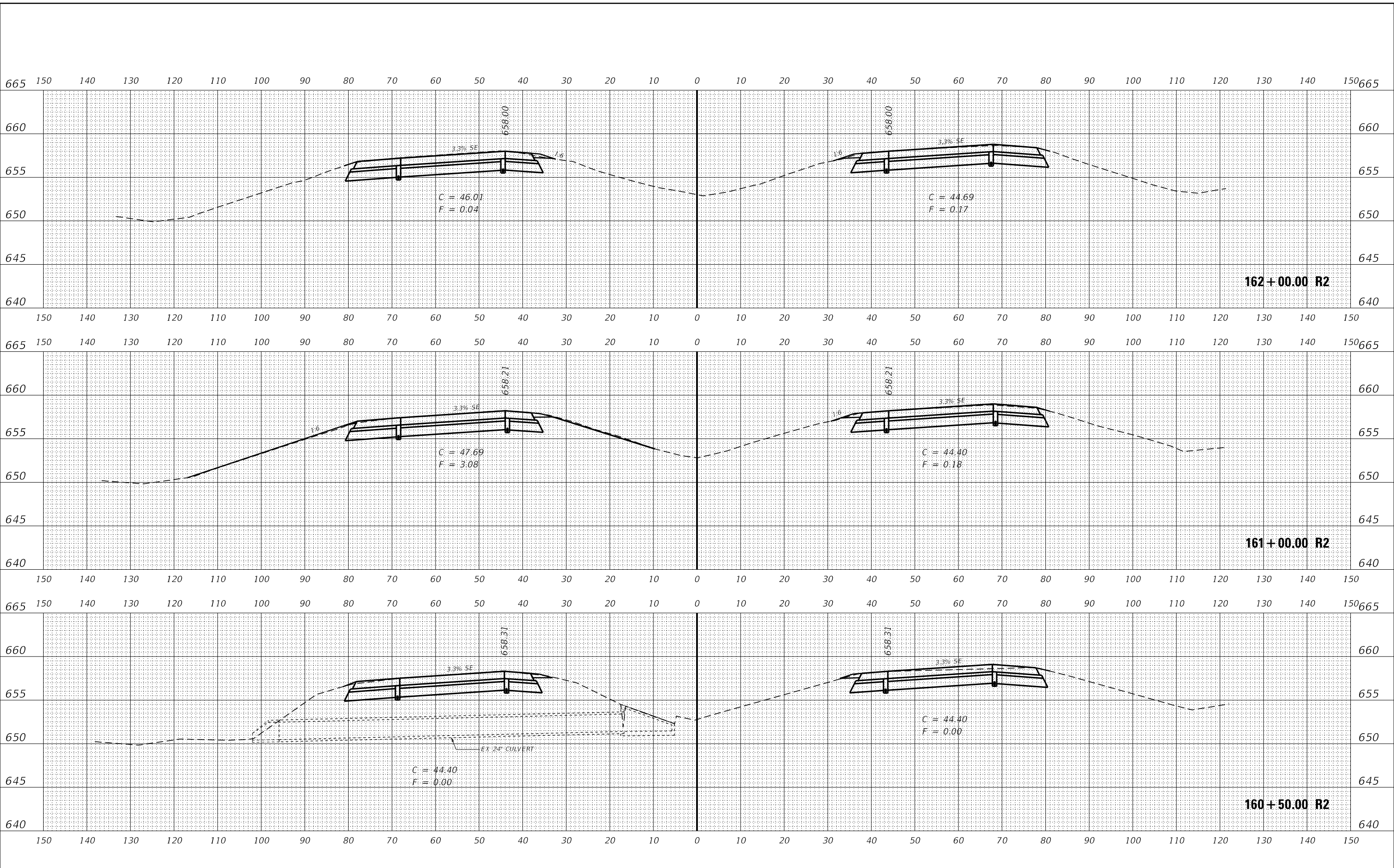
<b>CROSS SECTIONS</b>			
SCALE:	SHEET	OF	SHEETS
			STA. 158+00.00 R2 TO STA. 160+00.00 R2

F.A.J. RTE.	SECTION	COUNTY	TOTAL SHEETS	SHEET NO.
55	(53-2,1)R	LIVINGSTON	31	29
				CONTRACT NO. 66H50
		ILLINOIS	FED. AID PROJECT	

DATE	
BY	
SURVEYED	
PLOTTED	
TEMPLATE	
AREAS CHECKED	
FINAL SURVEY NO.	
NOTE BOOK NO.	
AREAS CHECKED	

DATE	
BY	
SURVEYED	
PLOTTED	
TEMPLATE	
AREAS CHECKED	
ORIGINAL SURVEY NO.	
NOTE BOOK NO.	
AREAS CHECKED	

MODEL: Final Cross Sections  
 FILE NAME: p:\work\66H50\66H50\DOT Documents\DOT Office\66H50\66H50\CAD Data\CAD Data\66H50-366150-corbor.dgn



USER NAME = corcoranlm	DESIGNED -	REVISED -
	DRAWN -	REVISED -
PLOT SCALE = 20.0000' / in.	CHECKED -	REVISED -
PLOT DATE = 8/17/2018	DATE -	REVISED -

STATE OF ILLINOIS  
 DEPARTMENT OF TRANSPORTATION

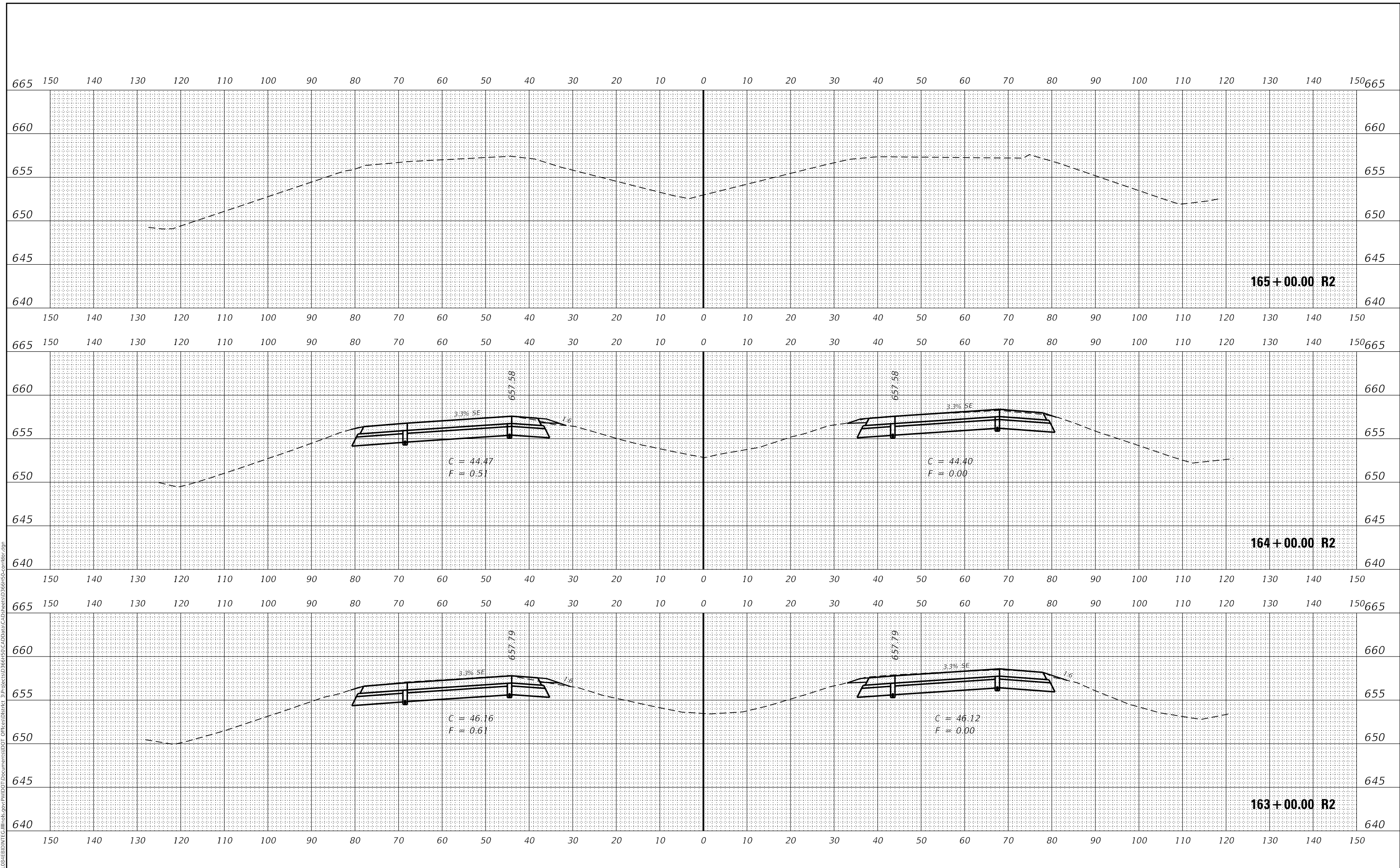
CROSS SECTIONS			
SCALE:	SHEET	OF	SHEETS
			STA. 160+50.00 R2 TO STA. 162+00.00 R2

F.A.J. RTE.	SECTION	COUNTY	TOTAL SHEETS	SHEET NO.
55	(53-2,1)R	LIVINGSTON	31	30
				CONTRACT NO. 66H50
				ILLINOIS FED. AID PROJECT

DATE	
BY	
SURVEYED	
PLOTTED	
TEMPLATE	
AREAS CHECKED	
FINAL SURVEY NOTE BOOK NO.	

DATE	
BY	
SURVEYED	
PLOTTED	
TEMPLATE	
AREAS CHECKED	
ORIGINAL SURVEY NOTE BOOK NO.	

MODEL: Final Cross Sections  
 FILE NAME: p:\work\66H50\66H50\DOT Documents\DOT Office\District 3\Projects\66H50\CAD Data\CAD\Sheet\66H50-CrossSec.dgn



USER NAME = corcoranlm	DESIGNED -	REVISED -
	DRAWN -	REVISED -
PLOT SCALE = 20.0000' / in.	CHECKED -	REVISED -
PLOT DATE = 8/17/2018	DATE -	REVISED -

**STATE OF ILLINOIS  
DEPARTMENT OF TRANSPORTATION**

<b>CROSS SECTIONS</b>			
SCALE:	SHEET	OF	SHEETS
			STA. 163+00.00 R2 TO STA. 165+00.00 R2

F.A.J. RTE.	SECTION	COUNTY	TOTAL SHEETS	SHEET NO.
55	(53-2,1)R	LIVINGSTON	31	31
				CONTRACT NO. 66H50
		ILLINOIS	FED. AID PROJECT	