

074

11-09-2018 LETTING ITEM 074

STATE OF ILLINOIS
DEPARTMENT OF TRANSPORTATION

| F.A. RTE. | SECTION | COUNTY | TOTAL SHEETS | SHEET NO. |
|-----------|---------|--------|--------------|-----------|
| VAR | | ** | 7 | 1 |

D3 BRIDGE DECK SEALING FY 2019
** LASALLE & PUTNAM
CONTRACT NO. 66J52

INDEX OF SHEETS

- 1 COVER SHEET
- 2 GENERAL NOTES
- 3 SUMMARY OF QUANTITIES
- 4-5 BRIDGE SEALING SCHEDULE
- 6 LOCATION MAP
- 7 SEALING DETAILS

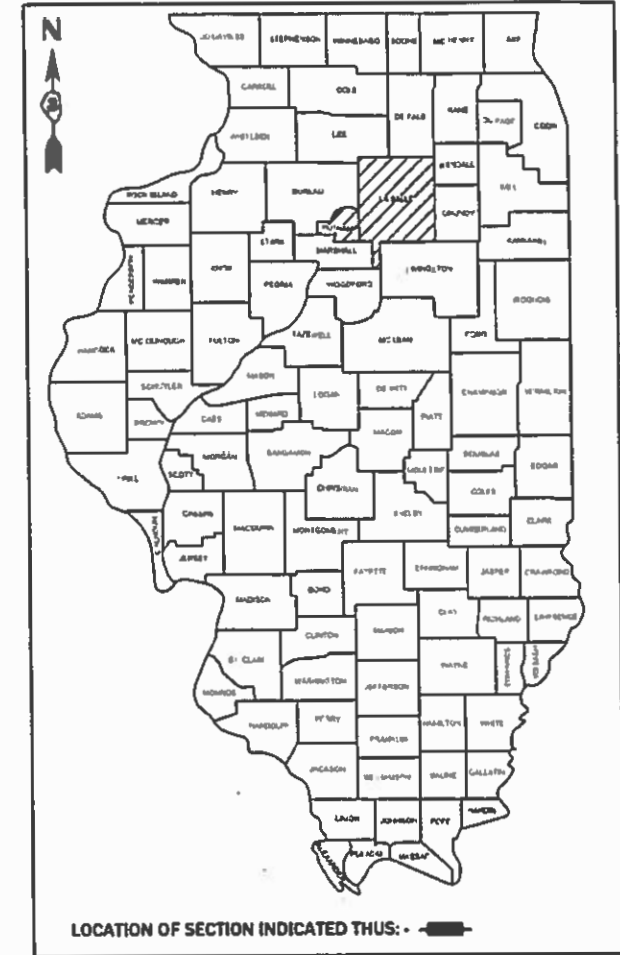
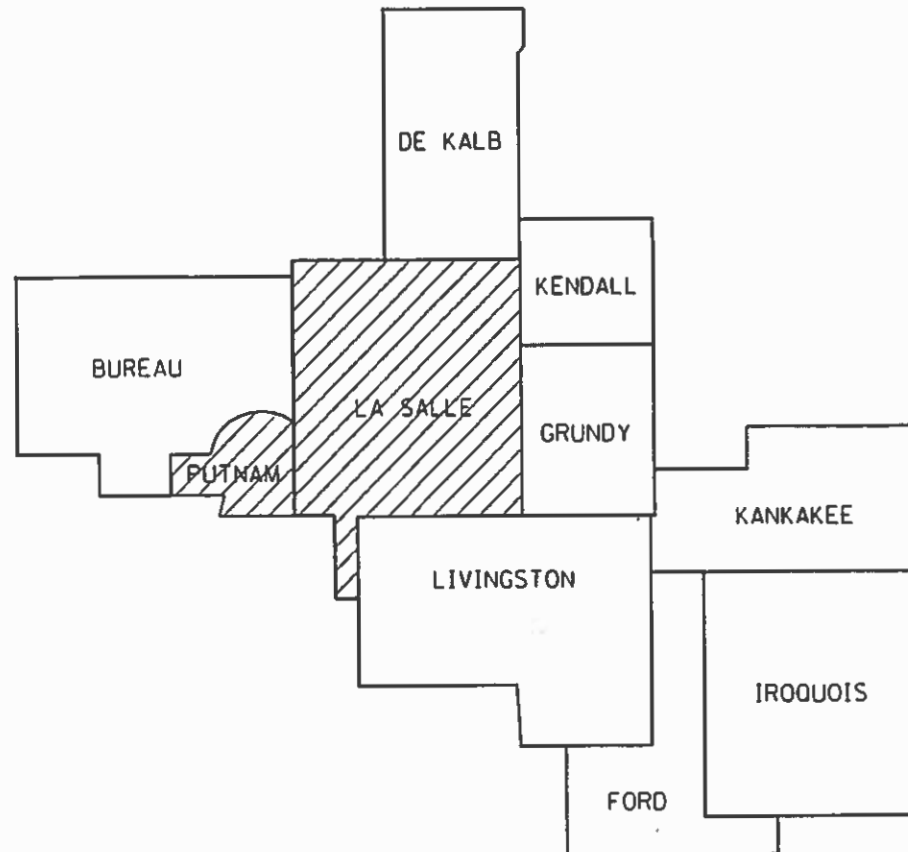
LIST OF ILLINOIS DOT HIGHWAY STANDARDS

| | |
|-----------|----------------------------------------------------------------------------|
| 000001-06 | STANDARD SYMBOLS, ABBREVIATIONS AND PATTERNS |
| 701201-04 | LANE CLOSURE, 2L, 2W, DAY ONLY, FOR SPEEDS \geq 45 MPH |
| 701400-09 | APPROACH TO LANE CLOSURE, FREEWAY/EXPRESSWAY |
| 701406-11 | LANE CLOSURE, FREEWAY/EXPRESSWAY, DAY OPERATIONS ONLY |
| 701411-09 | LANE CLOSURE, MULTILANE, AT ENTRANCE OR EXIT RAMP FOR SPEEDS \geq 45 MPH |
| 701428-01 | TRAFFIC CONTROL, SETUP AND REMOVAL, FREEWAY/EXPRESSWAY |
| 701456-05 | PARTIAL EXIT RAMP CLOSURE FREEWAY/EXPRESSWAY |
| 701501-06 | URBAN LANE CLOSURE, 2L, 2W, UNDIVIDED |
| 701601-09 | URBAN LANE CLOSURE, MULTILANE, 1W OR 2W WITH NONTRAVERSABLE MEDIAN |
| 701901-07 | TRAFFIC CONTROL DEVICES |

PROPOSED HIGHWAY PLANS

VARIOUS ROUTES D3 BRIDGE DECK SEALING FY 2019 PROJECT NHPP-STP-QA9X(020) BRIDGE DECK SEALING VARIOUS COUNTIES

C-93-029-19



J.U.L.I.E.
JOINT UTILITY LOCATION INFORMATION FOR EXCAVATION
1-800-892-0123
OR 811

PROJECT ENGINEER: BRAD DUNCAN, P.E.
UNIT CHIEF: JESSY JEAN
DISTRICT 3 NO. (815) 434-6131
CONTRACT NO. 66J52

STATE OF ILLINOIS
DEPARTMENT OF TRANSPORTATION

SUBMITTED 8-16-2018
[Signature]
REGIONAL ENGINEER

OCT 5 2018
[Signature]
ENGINEER OF DESIGN AND ENVIRONMENT

OCT 5 2018
[Signature]
DIRECTOR OF HIGHWAYS PROJECT IMPLEMENTATION

PRINTED BY THE AUTHORITY
OF THE STATE OF ILLINOIS

GENERAL NOTES

ANY REFERENCE TO A STANDARD IN THESE PLANS SHALL BE INTERPRETED TO MEAN THE EDITION AS INDICATED BY THE SUBNUMBER SHOWN IN THE LIST OF STANDARDS OR THE COPY INCLUDED IN THESE PLANS.

THE ENGINEER WILL BE THE SOLE JUDGE CONCERNING CURING TIME FOR THE SEALER.

ADDITIONAL FLAGGERS MAY BE REQUIRED TO CONTROL THE EXIT RAMP FOR THE STATE HIGHWAY STRUCTURES THAT CROSS OVER THE INTERSTATE THAT HAVE A CENTER CONCRETE MEDIAN. THE COST OF THESE FLAGGERS SHALL BE INCLUDED IN THE VARIOUS TRAFFIC CONTROL PAY ITEMS.

STATE OF ILLINOIS
DEPARTMENT OF TRANSPORTATION
DISTRICT THREE
AS BUILT INFORMATION

SUPERVISING CONSTRUCTION FIELD ENGINEER

RESIDENT ENGINEER / TECHNICIAN

START & END DATES
OF CONSTRUCTION:

INSPECTORS:

STATE OF ILLINOIS
DEPARTMENT OF TRANSPORTATION
DISTRICT THREE

PREPARED BY: *Tou Benmil*
DISTRICT STUDIES & PLANS ENGINEER

DATE: 8/14/18

EXAMINED BY: *KPK*
DISTRICT CONSTRUCTION ENGINEER

Michael Ashes
DISTRICT MATERIALS ENGINEER

Tommy Hoyle
DISTRICT OPERATIONS ENGINEER

| | | | |
|-------------------------------------------------------------------------------------------------------------|------------------------------|------------|-----------|
| FILE NAME = | USER NAME = nugenja | DESIGNED - | REVISED - |
| pw\01084EBID\INTEG.ILLNOIS.gov\PWIDOT\Documents\DOT Offices\District 3\Projects\0366J52\CADD\0366J52-ah-cad | | DRAWN - | REVISED - |
| Default | PLOT SCALE = 100.0000' / in. | CHECKED - | REVISED - |
| | PLOT DATE = 8/14/2018 | DATE - | REVISED - |

STATE OF ILLINOIS
DEPARTMENT OF TRANSPORTATION

GENERAL NOTES

SCALE: SHEET OF SHEETS STA. TO STA.

| F.A. RTE. | SECTION | COUNTY | TOTAL SHEETS | SHEET NO. |
|--------------------|---------|--------|--------------|-----------|
| VAR | . | -- | 7 | 2 |
| CONTRACT NO. 66J52 | | | | |

MODEL: Default
 FILE: \\nas101.pva.illinois.gov\PI\DOT\Documents\DOT_Offices\District 3\Projects\036652\036652-01-500.dgn

| CODE NO. | ITEM | UNIT | TOTAL QUANTITY | CONSTRUCTION CODE | | | |
|----------|-------------------------------------------------|-------|----------------|------------------------------------|------------------------------------|------------------------------------|------------------------------------|
| | | | | 90% FEDERAL 10% STATE BRIDGE | 80% FEDERAL 20% STATE BRIDGE | 80% FEDERAL 20% STATE BRIDGE | 80% FEDERAL 20% STATE BRIDGE |
| | | | | 0047 | 0047 | 0047 | 0047 |
| | | | | INTERSTATE NHPP | NON-INTERSTATE NHPP | STP-URB | STP-RUR |
| 67100100 | MOBILIZATION | L SUM | 1 | 0.61 | 0.12 | 0.09 | 0.18 |
| 70100420 | TRAFFIC CONTROL AND PROTECTION, STANDARD 701411 | EACH | 3 | 3 | | | |
| 70100450 | TRAFFIC CONTROL AND PROTECTION, STANDARD 701201 | L SUM | 1 | 0.55 | 0.04 | 0.14 | 0.27 |
| 70100700 | TRAFFIC CONTROL AND PROTECTION, STANDARD 701406 | L SUM | 1 | 1 | | | |
| 70100825 | TRAFFIC CONTROL AND PROTECTION, STANDARD 701456 | L SUM | 1 | 1 | | | |
| 70102620 | TRAFFIC CONTROL AND PROTECTION, STANDARD 701501 | L SUM | 1 | 0.5 | | | 0.5 |
| 70102630 | TRAFFIC CONTROL AND PROTECTION, STANDARD 701601 | L SUM | 1 | 0.2 | 0.8 | | |
| X5870015 | BRIDGE DECK CONCRETE SEALER | SQ FT | 1006853 | 533604 | 141917 | 133495 | 197837 |

| | | |
|-------------------------------|------------|-----------|
| USER NAME = nugentaj | DESIGNED - | REVISED - |
| | DRAWN - | REVISED - |
| PLOT SCALE = 100.0000 ' / in. | CHECKED - | REVISED - |
| PLOT DATE = 8/14/2018 | DATE - | REVISED - |

**STATE OF ILLINOIS
DEPARTMENT OF TRANSPORTATION**

SUMMARY OF QUANTITIES

SCALE: SHEET 1 OF 1 SHEETS STA. TO STA.

| | | | | |
|-----------|---------|--------|--------------------|-----------|
| F.A. RTE. | SECTION | COUNTY | TOTAL SHEETS | SHEET NO. |
| VAR | * | ** | 7 | 3 |
| | | | CONTRACT NO. 66J52 | |

CONCRETE SEALER

| STRUCTURE NUMBER | FACILITY CARRIED | APPROXIMATE LOCATION | FEATURE CROSSED | DECK WIDTH | PARAPET SURFACE | MEDIAN SURFACE | DECK LENGTH | SEAL AREA | TRAFFIC CONTROL AND PROTECTION STANDARD | FUNDING TYPE |
|-------------------------------------|----------------------|-------------------------|----------------------|------------|-----------------|----------------|-------------|------------------|-----------------------------------------|---------------------|
| | | | | FEET | FEET | FEET | FEET | SQ FT | | |
| 050-0234 | ILL 23/IL 71 FAP 68 | LASALLE ST IN OTTAWA | ILL MICH CANAL | 49.3 | 1.5 | | 21.7 | 1,102 | 701601 | NON-INTERSTATE NHPP |
| 050-0235 | ILL 23 & 71 | COLUMBUS ST OTTAWA | ILL MICH CANAL | 43.3 | 1.5 | | 21.7 | 972 | 701601 | NON-INTERSTATE NHPP |
| 050-0237 | ILL 351/FAP619 | 1.0 MI. S OF US 6 | IL RIVER | 39.1 | 7 | | 1774.9 | 81,823 | 701201 | STP-URB |
| 050-0238 | IL 178 FAS 1279 | 0.92 MI S OF US 6 | CLARK RUN | 36 | 1.2 | | 34.5 | 1,283 | 701201 | STP-URB |
| 050-0239 | IL 71 FAP 627 | 3.18 MI. E OF IL 178 | CREEK@HENNEPIN CANYN | 36 | 7 | | 73.1 | 3,143 | 701201 | STP-RUR |
| 050-0240 | IL 23/US 52 | 0.25 MI E OF HARDING RD | CROOKED LEG CREEK | 36 | 7 | | 114 | 4,902 | 701201 | STP-RUR |
| 050-0242 | IL 71 | 3.2 MI W OF IL 178 | VERMILION RIVER | 32 | 7 | | 355 | 13,845 | 701201 | STP-URB |
| 050-0243 | IL 71 | 5.90 MI E OF IL 178 | INTERMIT STREAM | 32 | 7 | | 82.9 | 3,233 | 701201 | STP-RUR |
| 050-0244 | IL 71/FAP 627 | 4.3 MI E OF IL 178 | SALT WELLS CR | 33 | 7 | | 80 | 3,200 | 701201 | STP-RUR |
| 050-0245 | MARSEILLES RD/FAS268 | 3.8 MI E OF IL 71 | I-80 | 56 | 7 | | 192.5 | 12,128 | 701201 | INTERSTATE NHPP |
| 050-0246 | IL 170 | S OF US RTE 6 | ILLINOIS RIVER | 30 TO 42 | 7 | | 1703.58 | 67,178 | 701201 | STP-RUR |
| 050-0248 | IL 178/CH 43 | 6.2 MI E OF IL 251 | I-80 | 57 | 7 | 5.6 | 193 | 13,433 | 701201 | INTERSTATE NHPP |
| 050-0249 | PLANK ROAD | 1.4 MI W OF IL 251 | I-80 | 62 | 7 | | 226.9 | 15,656 | 701201 | INTERSTATE NHPP |
| 050-0250 | IL 178 | 0.01 MI S OF CHURCH ST | I & M CANAL | 30 | 1.5 | | 45 | 1,418 | 701201 | STP-URB |
| 050-0255 | IL 23 | 3.0 NI S OF US 52 | BUCK CREEK | 36 | 7.6 | | 140 | 6,104 | 701201 | STP-RUR |
| 050-8000 | EBL OF ILL 18 | 2 BLKS. W OF ILL 23 | VERMILION RIVER | 29.3 | 4.25 | | 237 | 7,951 | 701601 | NON-INTERSTATE NHPP |
| LASALLE COUNTY SUB-TOTAL | | | | | | | | 975,529 | | |
| PUTNAM COUNTY NON-INTERSTATE | | | | | | | | | | |
| 078-0010 | ILL 71 | JCT I-180 AND ILL 26 | I-180 | 70.5 | 6.6 | 5.2 | 273.8 | 22,534 | 701601 | INTERSTATE NHPP |
| 078-0022 | CH 1 | 0.17 MI N OF ILL 26 | I-180 | 32.5 | 2.4 | | 251.8 | 8,788 | 701201 | INTERSTATE NHPP |
| PUTNAM COUNTY SUB-TOTAL | | | | | | | | 31,322 | | |
| TOTAL | | | | | | | | 1,006,851 | | |

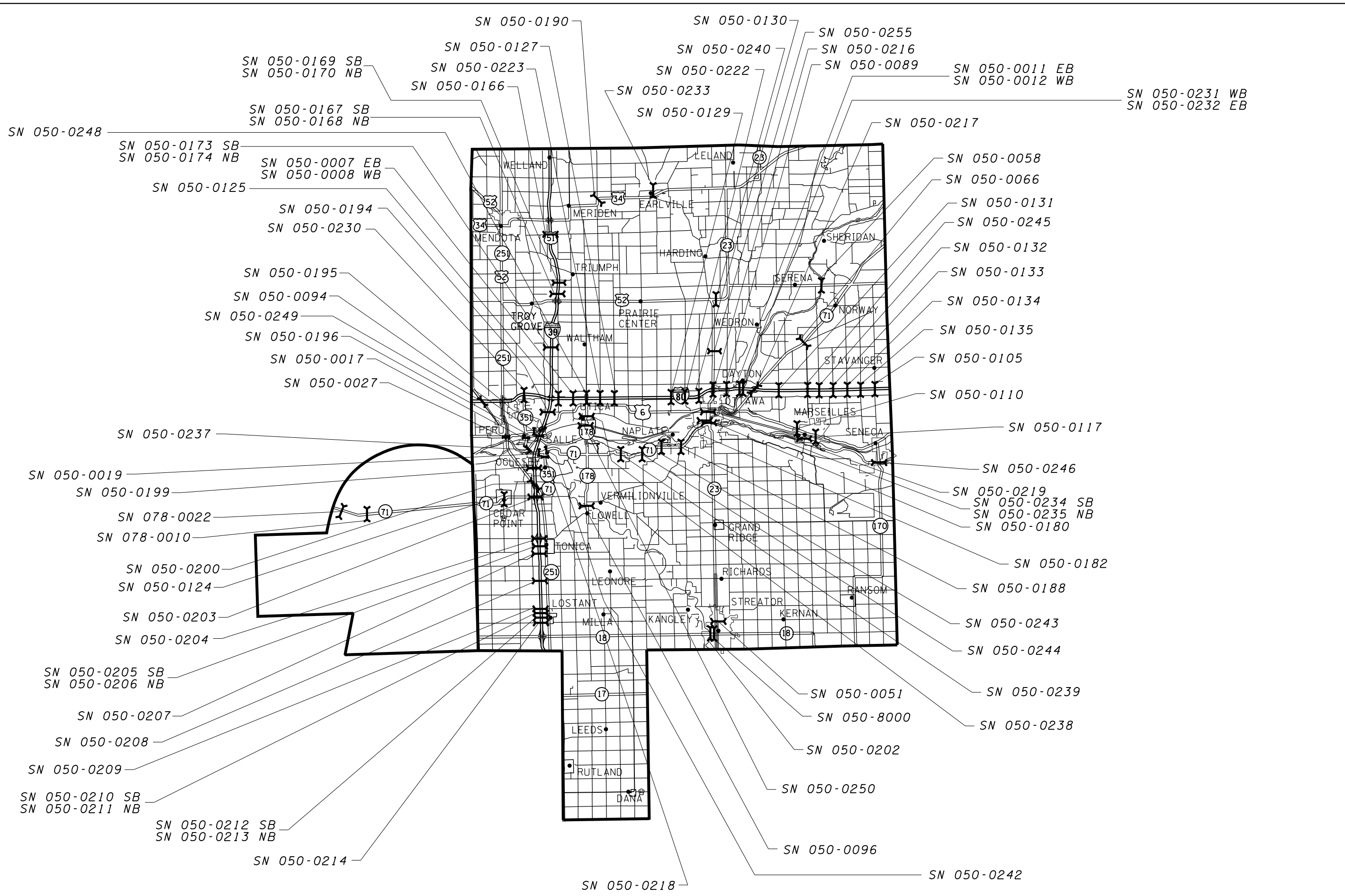
MODEL: Default
 FILE: \\nas01c.pva\ill08\EBID\NTEC\Illinois.gov\PW\DOT\Documents\DOT Office\DL\rlct 3\Projects\0366652\CAD\Drawn\0366652-rlct-schedule.dgn

| | | |
|------------------------------|------------|-----------|
| USER NAME = nugentaj | DESIGNED - | REVISED - |
| | DRAWN - | REVISED - |
| PLOT SCALE = 100,0000' / in. | CHECKED - | REVISED - |
| PLOT DATE = 8/14/2018 | DATE - | REVISED - |

**STATE OF ILLINOIS
DEPARTMENT OF TRANSPORTATION**

| | | | |
|------------------|---------|-------------|--------------|
| SCHEDULES | | | |
| SCALE: | SHEET 2 | OF 2 SHEETS | STA. TO STA. |

| | | | | |
|---------------------------|---------|--------|--------------|-----------|
| F.A. RTE. | SECTION | COUNTY | TOTAL SHEETS | SHEET NO. |
| VAR | * | ** | 7 | 5 |
| CONTRACT NO. 66J52 | | | | |
| ILLINOIS FED. AID PROJECT | | | | |



MODEL: Default
 FILE: \\nas01\p03\ill08\B&E\ID\NTEC\Illinois\gov\PIV\DOT\Documents\DOT - Offices\DI\refct_3\proj\sect03\66j52\CAD\plan\66j52-rte-plan.dgn

| | | |
|------------------------------|------------|-----------|
| USER NAME = nugentaj | DESIGNED - | REVISED - |
| PLOT SCALE = 100,0000' / in. | DRAWN - | REVISED - |
| PLOT DATE = 8/14/2018 | CHECKED - | REVISED - |
| | DATE - | REVISED - |

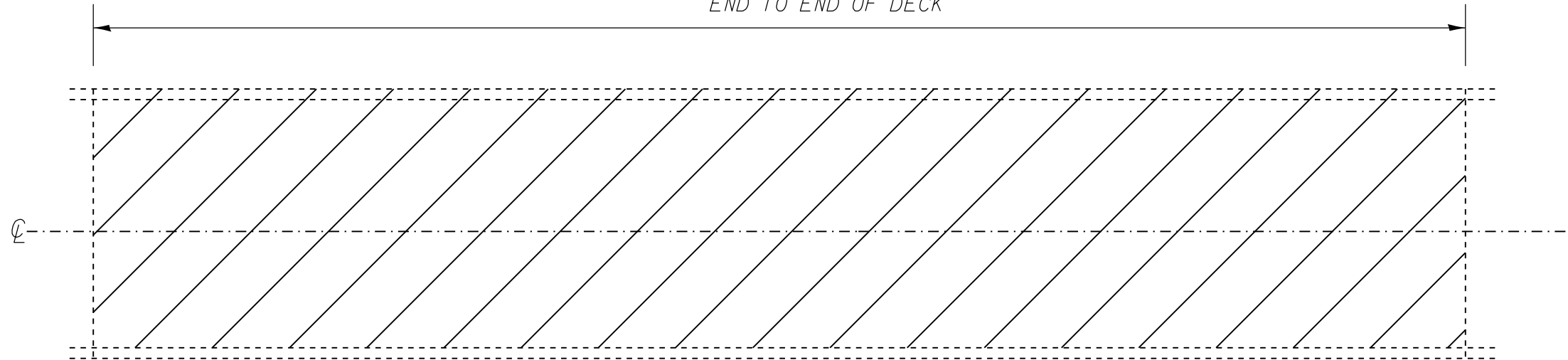
| |
|---------------------------------------------------|
| STATE OF ILLINOIS DEPARTMENT OF TRANSPORTATION |
|---------------------------------------------------|

| | | |
|---------------------|---------------------|--------------|
| LOCATION MAP | | |
| SCALE: | SHEET 1 OF 1 SHEETS | STA. TO STA. |

| F.A. RTE. | SECTION | COUNTY | TOTAL SHEETS | SHEET NO. |
|-----------|---------|--------|--------------|-----------|
| | * | ** | 7 | 6 |

| | | | | |
|---------------------------|--|--|--|--|
| CONTRACT NO. 66J52 | | | | |
| ILLINOIS FED. AID PROJECT | | | | |

LIMITS OF BRIDGE DECK SEALING
END TO END OF DECK



PLAN VIEW

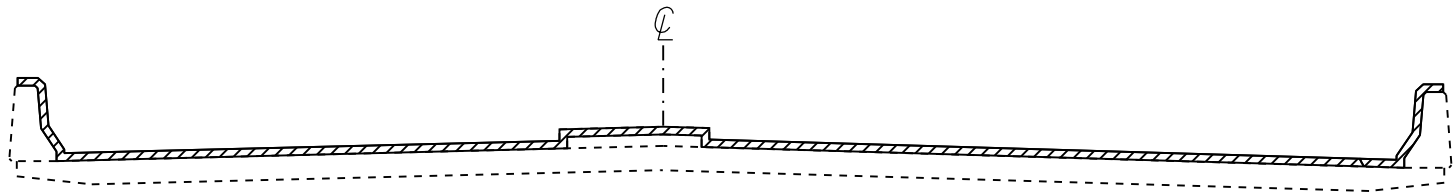
LIMITS OF
BRIDGE DECK
SEALING

OUT TO OUT
OR
FACE TO FACE
SEE
CROSS SECTION
VIEW

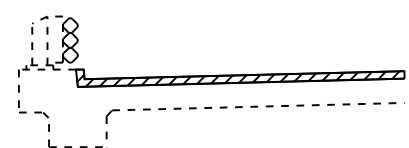
NOTE: BRIDGE APPROACH PAVEMENT SHALL NOT BE SEALED.

EXISTING PAVEMENT MARKINGS SHALL BE TEMPORARILY COVERED PRIOR TO APPLICATION OF THE DECK SURFACE TREATMENT, TO PREVENT THE MATERIAL FROM BEING APPLIED TO THE MARKINGS, AND TO PROTECT THE REFLECTIVE PROPERTIES OF THE MARKINGS. THE TEMPORARY COVERING MATERIAL USED SHALL BE SUCH THAT IT WILL NOT AFFECT THE MARKING'S REFLECTIVITY WHEN REMOVED AFTER APPLICATION OF THE DECK SURFACE TREATMENT AND PRIOR TO OPENING TO TRAFFIC. COST INCLUDED WITH CONCRETE SEALER.

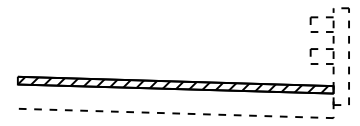
EXISTING EXPANSION JOINTS SHALL BE TEMPORARILY COVERED, PRIOR TO APPLICATION OF THE DECK SURFACE TREATMENT, TO PREVENT THE MATERIAL FROM BEING APPLIED TO THE JOINTS. THE TEMPORARY COVERING SHALL BE REMOVED AFTER THE APPLICATION OF THE DECK SURFACE TREATMENT AND PRIOR TO OPENING TO TRAFFIC. COST IS INCLUDED WITH CONCRETE SEALER.



SECTION WITH
PARAPET AND MEDIAN



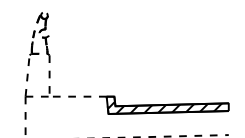
SECTION WITH CURB AND
TUBULAR THRIE BEAM RETROFIT RAIL



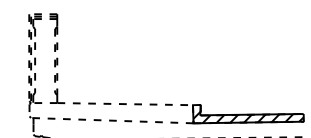
SECTION WITH
BRIDGE RAIL



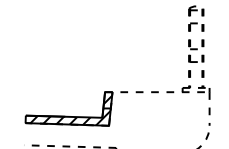
SECTION WITH CONCRETE
AND ALUMINUM RAILING



CONCRETE AND
ALUMINUM RAILING



CONCRETE
BRIDGE RAILING



BRIDGE RAIL

VARIOUS SECTIONS WITH SIDEWALK AND/OR CONCRETE CURB

AREA TO BE SEALED

NOT TO SCALE

| | | | | | | | | | | | | |
|------------------------------------------------------------------------------------------------------------------------|------------------------------|------------|-----------|-----------------------------------------------------------|------------------------|---------|------|-----------|------------------|--------------------|--------------------|-----------|
| FILE NAME = | USER NAME = nugentaj | DESIGNED - | REVISED - | STATE OF ILLINOIS DEPARTMENT OF TRANSPORTATION | SEALING DETAILS | | | F.A. RTE. | SECTION | COUNTY | TOTAL SHEETS | SHEET NO. |
| pw:\IL084EB\INTEG\Illinois.gov\PWIDOT\Documents\DOT Offices\District 3\Projects\D366J52\CADDData\D366J52-ehd-04-18.dwg | DRAWN - | REVISED - | REVISED - | | | | | | * | ** | 7 | 7 |
| Default | PLOT SCALE = 100.0000' / in. | CHECKED - | REVISED - | | SCALE: | SHEET 1 | OF 1 | SHEETS | STA. | TO STA. | CONTRACT NO. 66J52 | |
| | PLOT DATE = 8/14/2018 | DATE - | REVISED - | | | | | ILLINOIS | FED. AID PROJECT | **LASALLE & PUTNAM | | |