

1W

FOR INDEX OF SHEETS AND STANDARDS, SEE SHEET A2

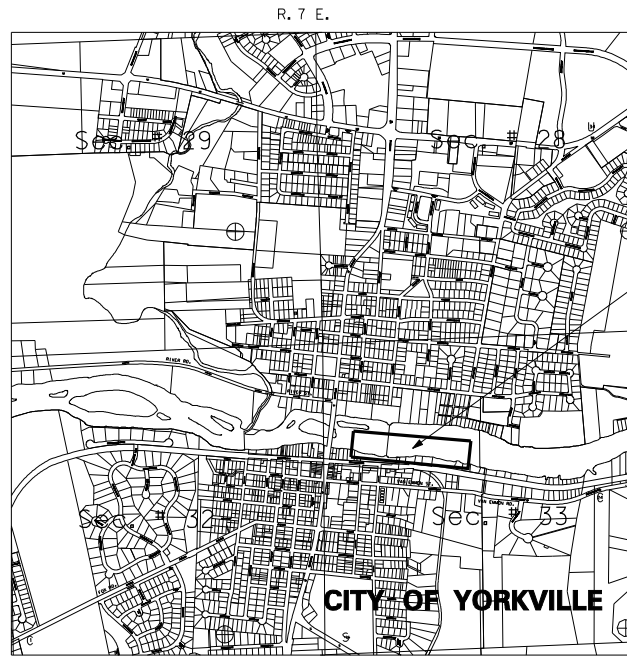
STATE OF ILLINOIS  
DEPARTMENT OF NATURAL RESOURCES  
OFFICE OF WATER RESOURCES

MULTI-PURPOSE DAM PROJECT – PHASE 2 –  
CANOE AND FISH BYPASS CHANNEL  
YORKVILLE DAM – FOX RIVER

YORKVILLE, ILLINOIS  
KENDALL COUNTY  
FR-423  
2007

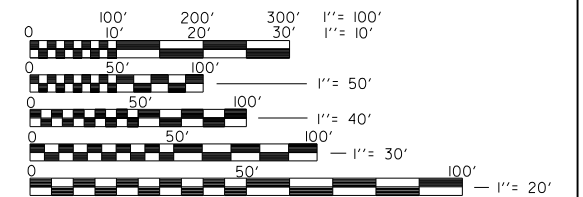
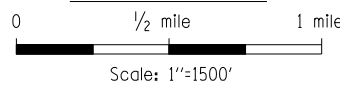


REGIONAL MAP



PROPOSED PROJECT SITE

LOCATION MAP



FULL SIZE PLANS HAVE BEEN PREPARED USING STANDARD ENGINEERING SCALES, REDUCED SIZED PLANS WILL NOT CONFORM TO STANDARD SCALES, IN MAKING MEASUREMENTS ON REDUCED PLANS, THE ABOVE SCALES MAY BE USED.



081-004737

ILLINOIS REGISTERED STRUCTURAL ENGINEER NO.  
LICENSE EXPIRES 11-30-2008

062-044058

ILLINOIS REGISTERED PROFESSIONAL ENGINEER NO.  
LICENSE EXPIRES 11-30-2007

SUBMITTED BY *William J. Schuck* DATE *Oct 10, 2007*  
MANAGER, DIVISION OF PROJECT IMPLEMENTATION  
APPROVED BY *Byron T. Danley* DATE *Oct 10, 2007*  
DIRECTOR