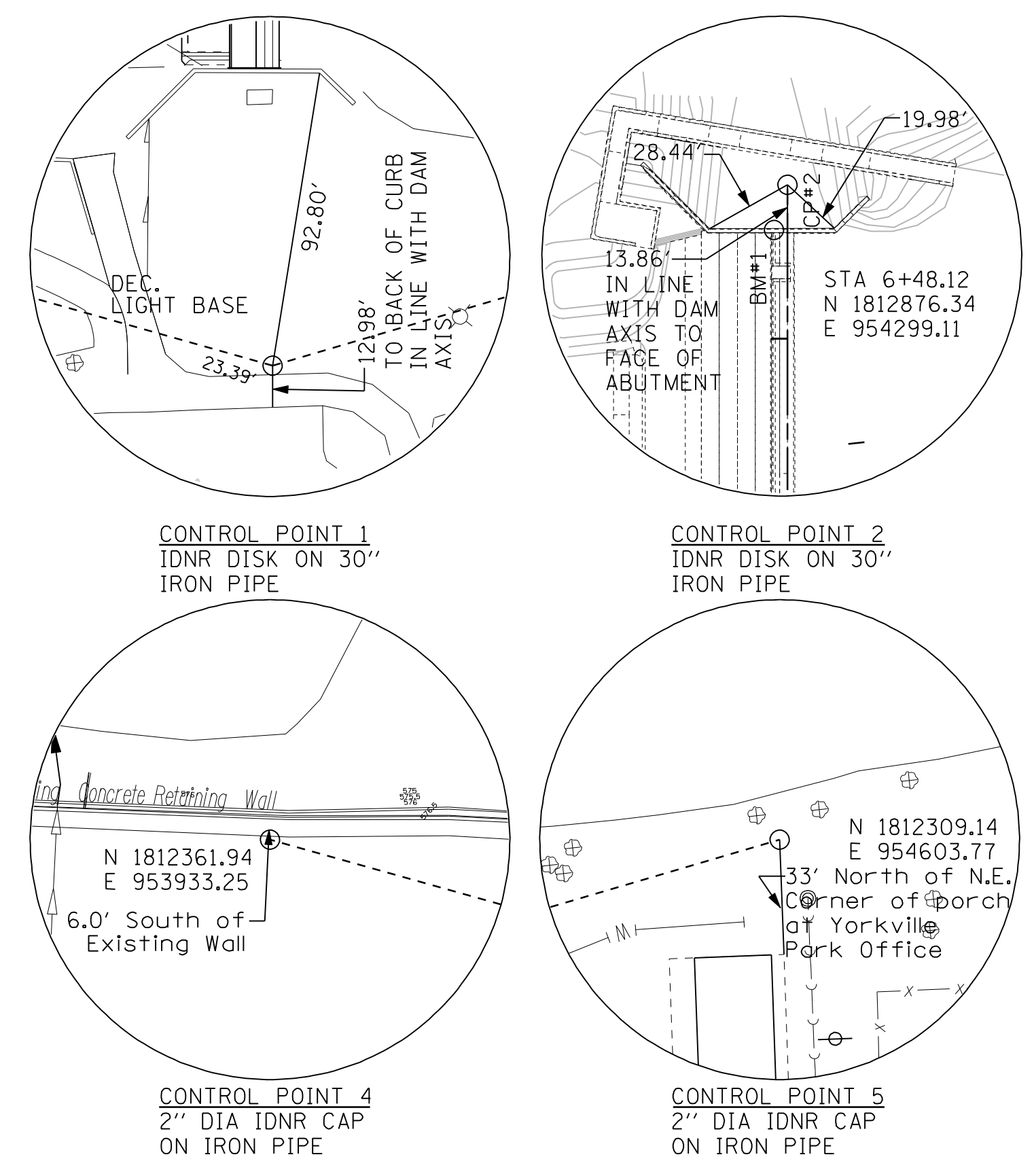
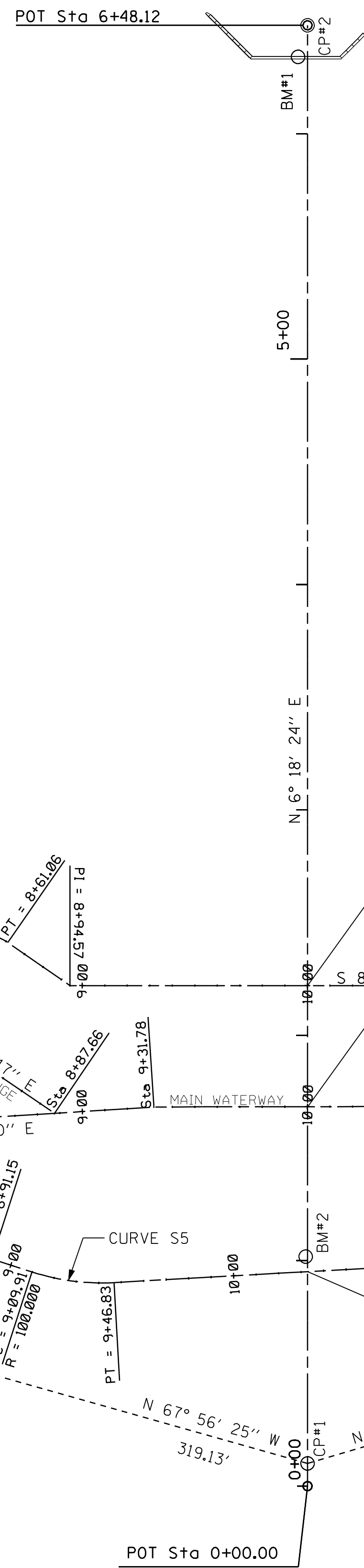


CURVE C1	CURVE C2	CURVE C3
PROP. CURVE C1 PI STA = 7+09.81 Δ = 31° 51' 51" D = 38° 51' 7" R = 150.000 T = 42.82 L = 82.34 E = 5.99 P.C. STA = 6+67.73 P.T. STA = 7+05.26	PROP. CURVE C2 PI STA = 12+70.74 Δ = 8° 36' 13" D = 23° 52' 24" R = 240.000 T = 18.07 L = 36.01 E = 0.68 P.C. STA = 12+57.70 P.T. STA = 12+88.75	PROP. CURVE C3 PI STA = 13+36.88 Δ = 7° 30' 10" D = 23° 52' 24" R = 240.000 T = 15.77 L = 31.44 E = 0.52 P.C. STA = 13+31.50 P.T. STA = 13+62.61
CURVE C4	CURVE C5	
PROP. CURVE C4 PI STA = 14+16.14 Δ = 7° 31' 11" D = 23° 52' 24" R = 240.000 T = 15.74 L = 31.43 E = 0.52 P.C. STA = 14+10.42 P.T. STA = 14+41.89	PROP. CURVE C5 PI STA = 6+70.16 Δ = 23° 59' 38" D = 47° 46' 51" R = 119.914 T = 25.54 L = 49.87 E = 2.69 P.C. STA = 6+55.03 P.T. STA = 7+05.26	



BENCHMARK 1
METAL PLUG IN CHISELED SQUARE ON NORTH ABUTMENT
ELEVATION = 582.096 (NGVD '29)
N 1812862.756
E 954293.472

BENCHMARK 2
METAL PLUG IN CHISELED SQUARE ON SOUTH ABUTMENT
ELEVATION = 582.000 (NGVD '29)
N 1812333.455
E 954238.328

BENCHMARK 3
3/8" DIAMETER IRON PIN WITH DNR CAP
ELEVATION = 582.575 (NGVD '29)
N 1812264.495
E 953943.582

LEGEND:
○ CP - CONTROL POINT
○ BM - BENCHMARK

10/09/2007 4:40:12 PM S:\DOCUMENT\02348801\CIVIL\DGN\ALT00RBF.DGN
 Checked By: JPR
 Drawn By: JPR

CURVE S1
PROP. CURVE S1
PI STA. = 5+24.68
Δ = 15° 05' 52" (LT)
D = 14° 41' 28"
R = 390.00'
T = 51.68'
L = 102.77'
E = 3.41'
P.C. STA. = 4+73.00
P.T. STA. = 5+75.77

CURVE S2
PROP. CURVE S2
PI STA. = 7+06.64
Δ = 9° 24' 40" (LT)
D = 13° 28' 53"
R = 425.00'
T = 34.98'
L = 69.81'
E = 1.44'
P.C. STA. = 6+71.65
P.T. STA. = 7+41.46

CURVE S3
PROP. CURVE S3
PI STA. = 8+08.90
Δ = 14° 31' 52" (RT)
D = 42° 26' 16"
R = 135.01'
T = 17.21'
L = 34.24'
E = 1.09'
P.C. STA. = 7+91.69
P.T. STA. = 8+25.93

CURVE S4
PROP. CURVE S4
PI STA. = 8+85.37
Δ = 4° 33' 25" (RT)
D = 39° 24' 36"
R = 145.38'
T = 5.78'
L = 11.56'
E = 0.12'
P.C. STA. = 8+79.58
P.T. STA. = 8+91.15

CURVE S5
PROP. CURVE S5
PI STA. = 9+28.58
Δ = 21° 09' 18" (LT)
D = 57° 17' 45"
R = 100.00'
T = 18.67'
L = 36.92'
E = 1.73'
P.C. STA. = 9+09.91
P.T. STA. = 9+46.83

CURVE S6
PROP. CURVE S6
PI STA. = 12+69.32
Δ = 18° 25' 03" (LT)
D = 30° 09' 20"
R = 190.00'
T = 30.80'
L = 61.08'
E = 2.48'
P.C. STA. = 12+38.52
P.T. STA. = 12+99.59

CURVE S7
PROP. CURVE S7
PI STA. = 14+18.21
Δ = 41° 16' 09" (RT)
D = 18° 11' 21"
R = 315.00'
T = 118.62'
L = 226.89'
E = 21.59'
P.C. STA. = 12+99.59
P.T. STA. = 15+26.48

CURVE S8
PROP. CURVE S8
PI STA. = 15+56.36
Δ = 50° 52' 27" (RT)
D = 86° 48' 42"
R = 66.00'
T = 34.88'
L = 64.17'
E = 8.65'
P.C. STA. = 15+26.48
P.T. STA. = 15+85.08