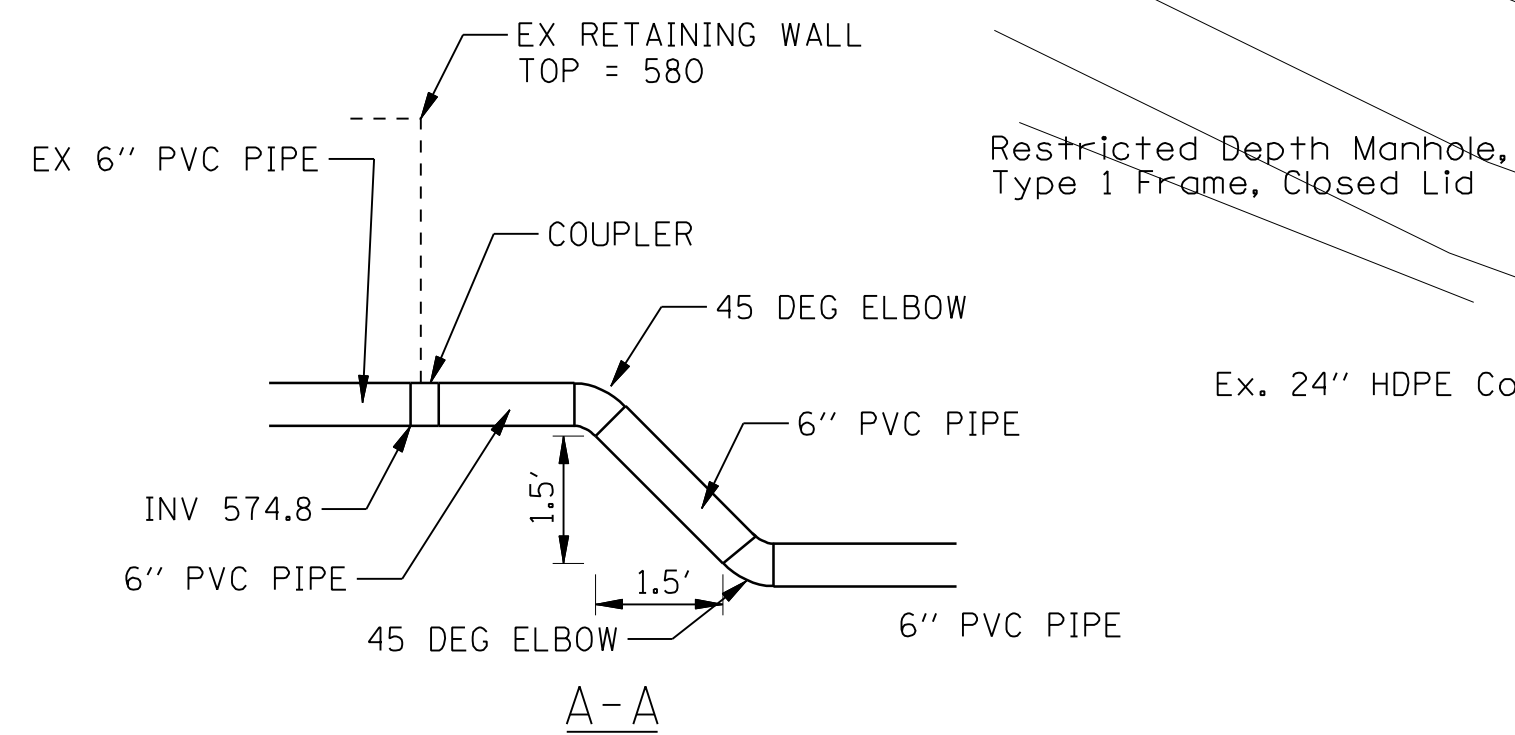


- CONSTRUCTION SEQUENCE**
- CUT THE EXISTING END OF THE PIPE SO AS TO PRESENT A FLUSH BUTT JOINT. BRUSH AND CLEAN ALL PIPES.
 - APPLY THE MASTIC JOINT SEALANT TO THE FIRST 6" OF EACH PIPE.
 - BUTT THE PIPES TOGETHER LEAVING A MINIMUM OF 1' X 6" DEEP EXCAVATION UNDER AND AROUND EACH PIPE END (CHIP AND REMOVE EXISTING CONCRETE AS REQUIRED.)
 - CUT A PIECE OF SHEET METAL GAGE 10, HYPALON OR EQUIVALENT 1.5' WIDE BY THE OUTSIDE CIRCUMFERENCE OF THE PIPE PLUS 3" LONG.
 - WRAP THE SHEET METAL, HYPALON OR EQUIVALENT AROUND THE PIPES, 9" ON EACH SIDE OF THE JOINT, STARTING AT THE TOP OF THE PIPE
 - LAP THE SHEET METAL, HYPALON OR EQUIVALENT AT LEAST 3" AT THE TOP OF THE PIPE AND PLACE THE MASTIC JOINT SEALANT BETWEEN THE LAP.
 - PLACE TWO METAL BANDS AROUND THE SHEET METAL, HYPALON OR EQUIVALENT AND TIGHTEN.
 - WIPE OFF ANY EXCESS MASTIC JOINT SEALANT THAT OOOZES OUT FROM BETWEEN THE SHEET METAL AND THE PIPES.
 - PLACE CONCRETE AROUND THE JOINT.

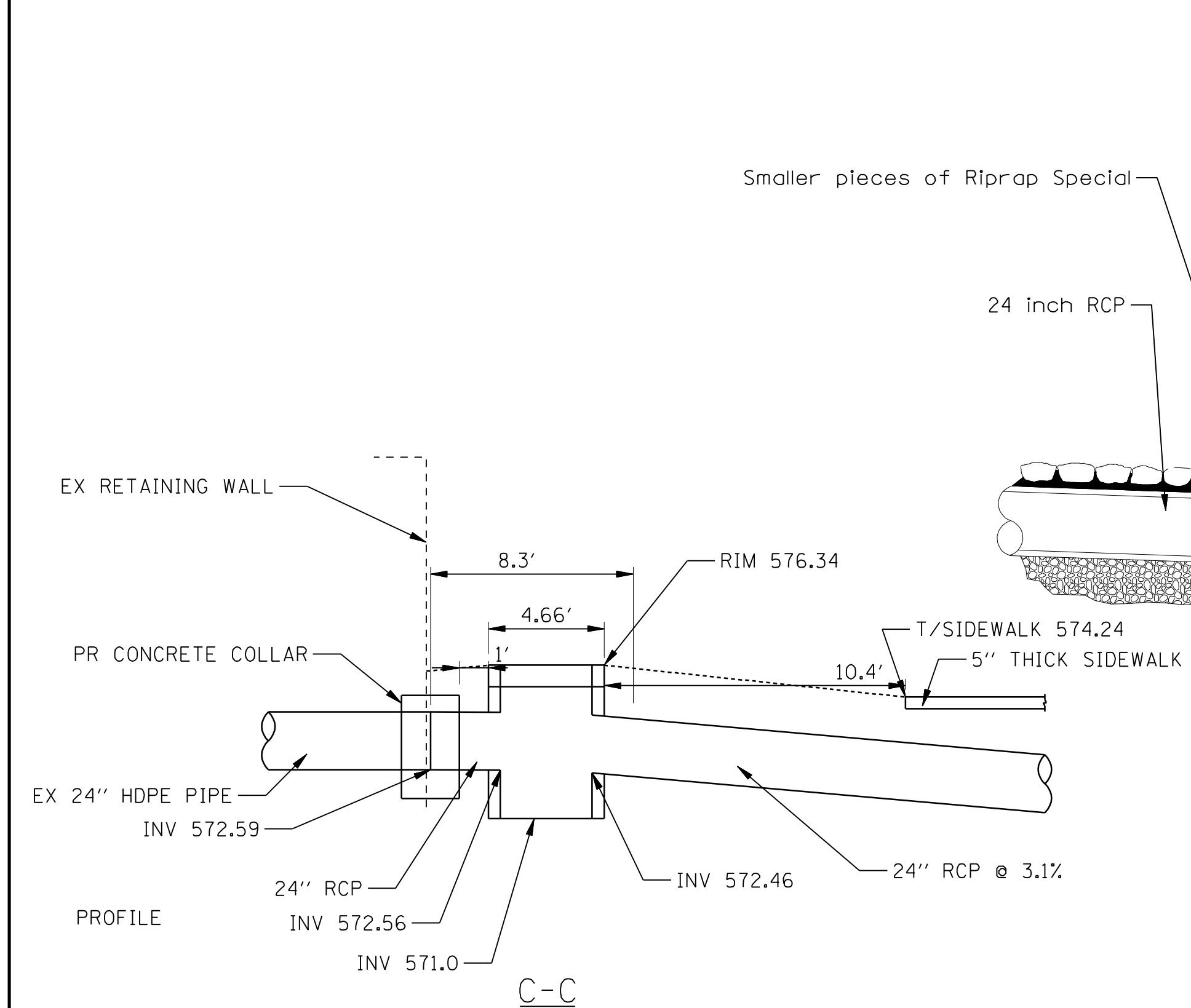
- GENERAL NOTES:**
- CARE MUST BE TAKEN TO PREVENT DEBRIS FROM ENTERING THE PIPE CULVERT. ALL DEBRIS WHICH ENTERS THE PIPE CULVERT MUST BE REMOVED. THE PIPE CULVERT MUST BE LEFT CLEAN AND UNOBSTRUCTED UPON COMPLETION OF THE CONTRACT
 - CARE MUST BE TAKEN TO PREVENT ANY PART OF THE NEW PIPE CONNECTION FROM PROJECTING INTO THE EXISTING PIPE CULVERT.
 - PAID FOR AS CONCRETE COLLAR.

Bill of Material		
Item	Unit	Qty
Restricted Depth Manhole, 4'-Diameter, Type 1 Frame, Closed Lid	Ea.	2
Concrete Collar	Ea.	2
Storm Sewers, Class A, Type 2 24"	Foot	82.0
Storm Sewer Installation (PVC) Class B 6"	Foot	45



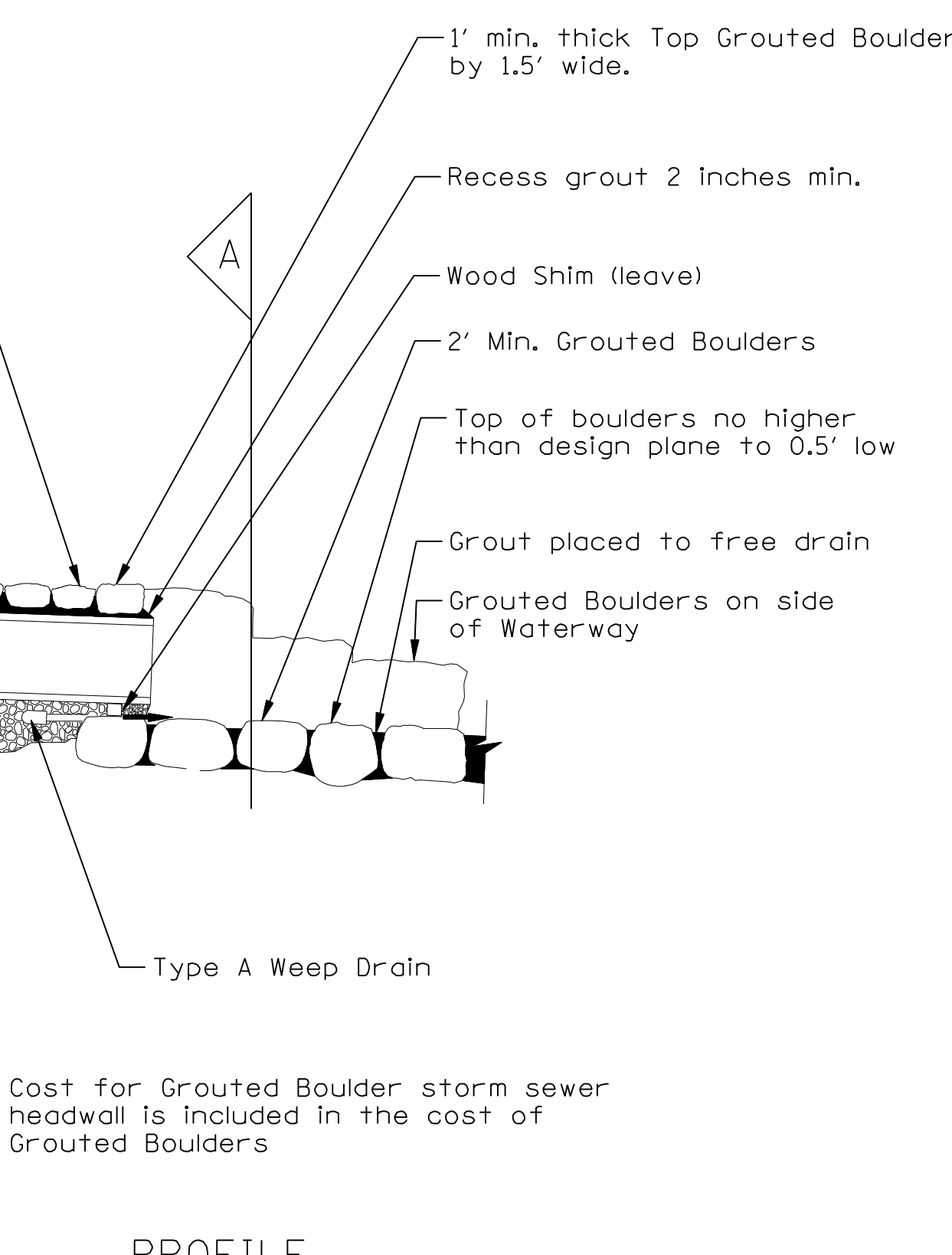
STORM SEWER EXTENSION DETAILS

13 CONCRETE COLLAR



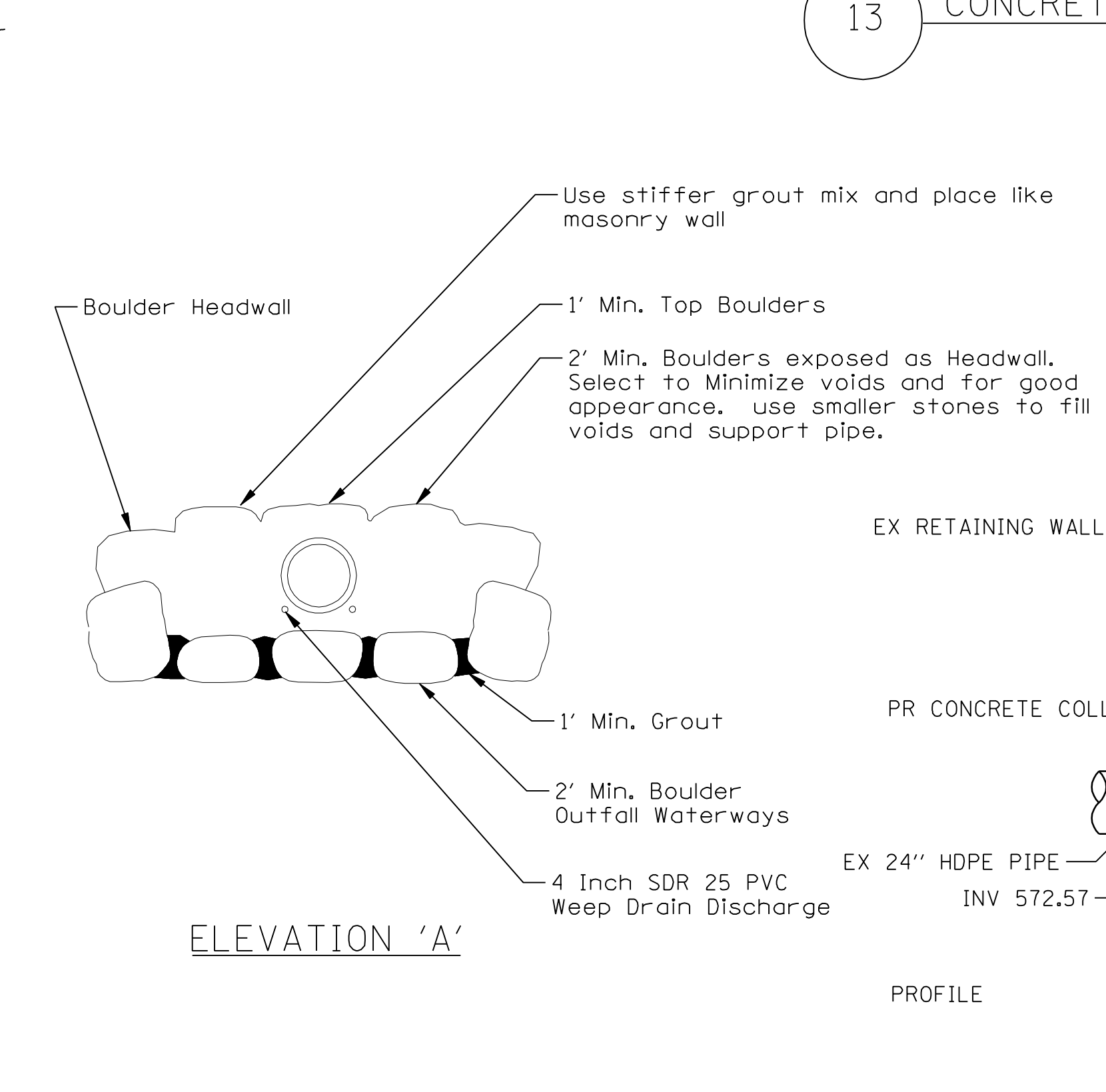
WEST RESTRICTED DEPTH MANHOLE DETAIL

NOT TO SCALE STD 602601 AND 602401

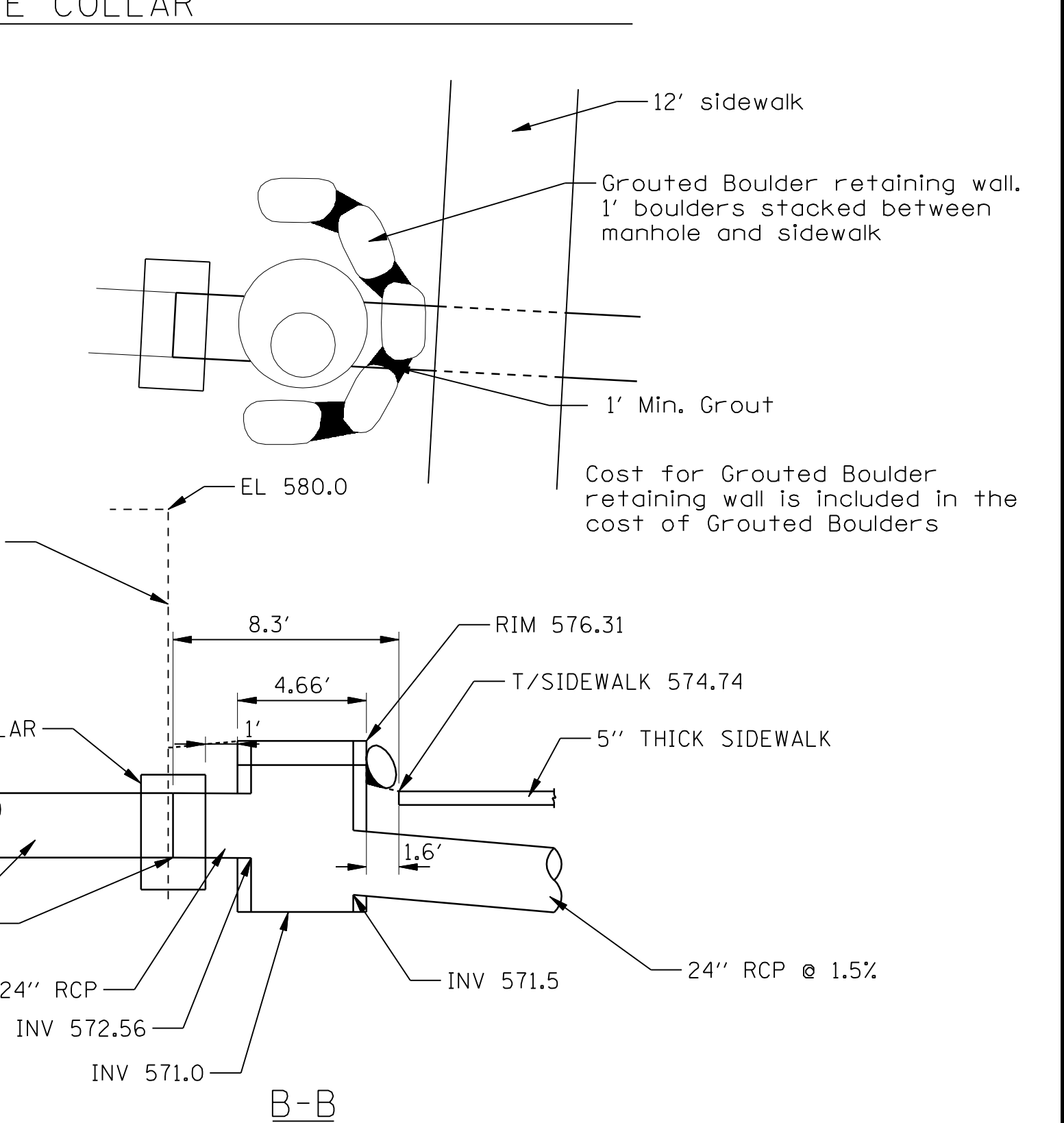


14 GROUDED BOULDER STORM SEWER HEADWALL

NOT TO SCALE



ELEVATION 'A'



EAST RESTRICTED DEPTH MANHOLE DETAIL

NOT TO SCALE STD 602601 AND 602401

Designed By: JPR Checked By: TKL
 Drawn By: JPR Checked By: TKL
 10/09/2007 4:50:05 PM S:\DOCUMENT\02348801\CIVIL\DCN\DRD00Q87.DGN