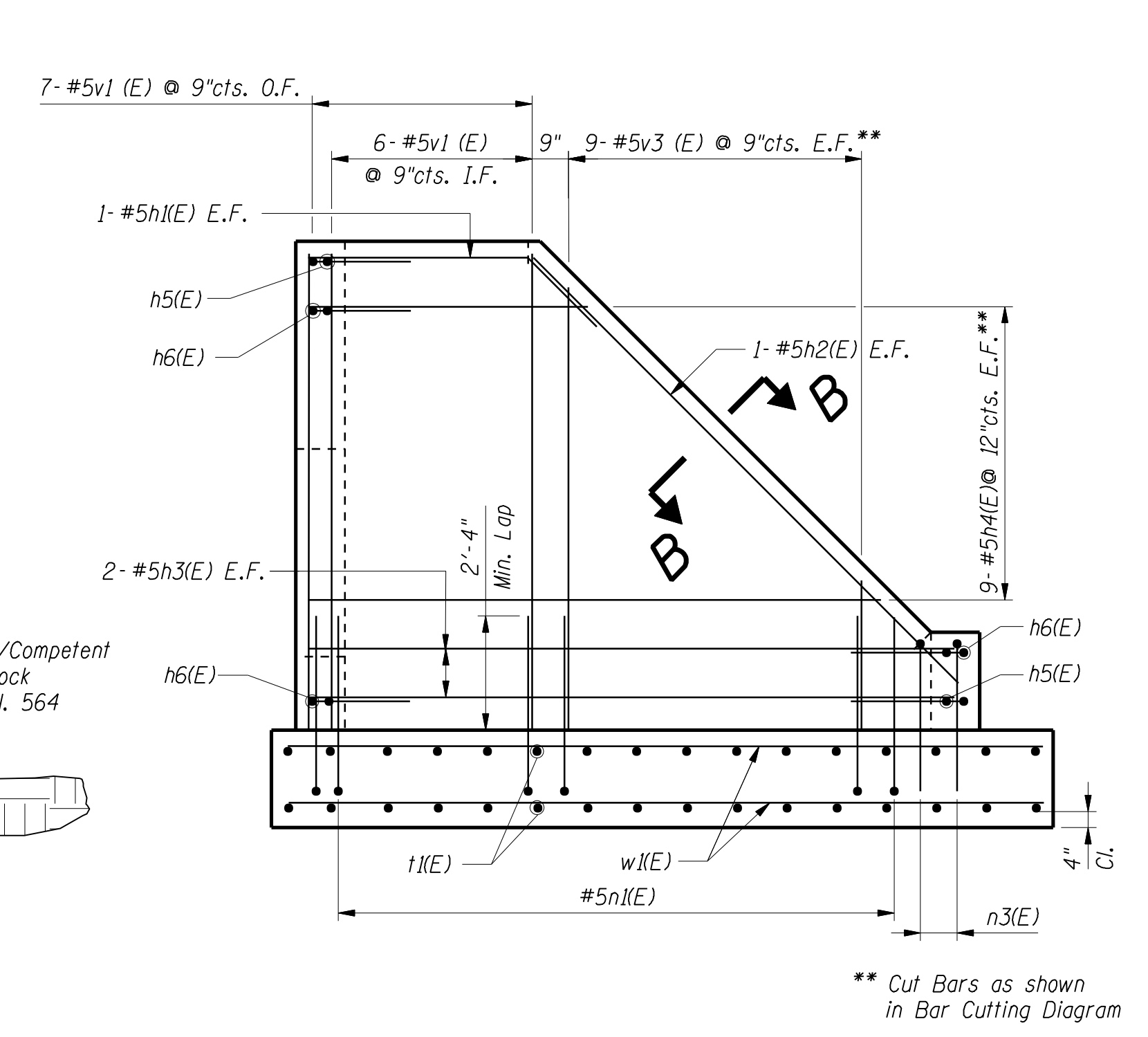
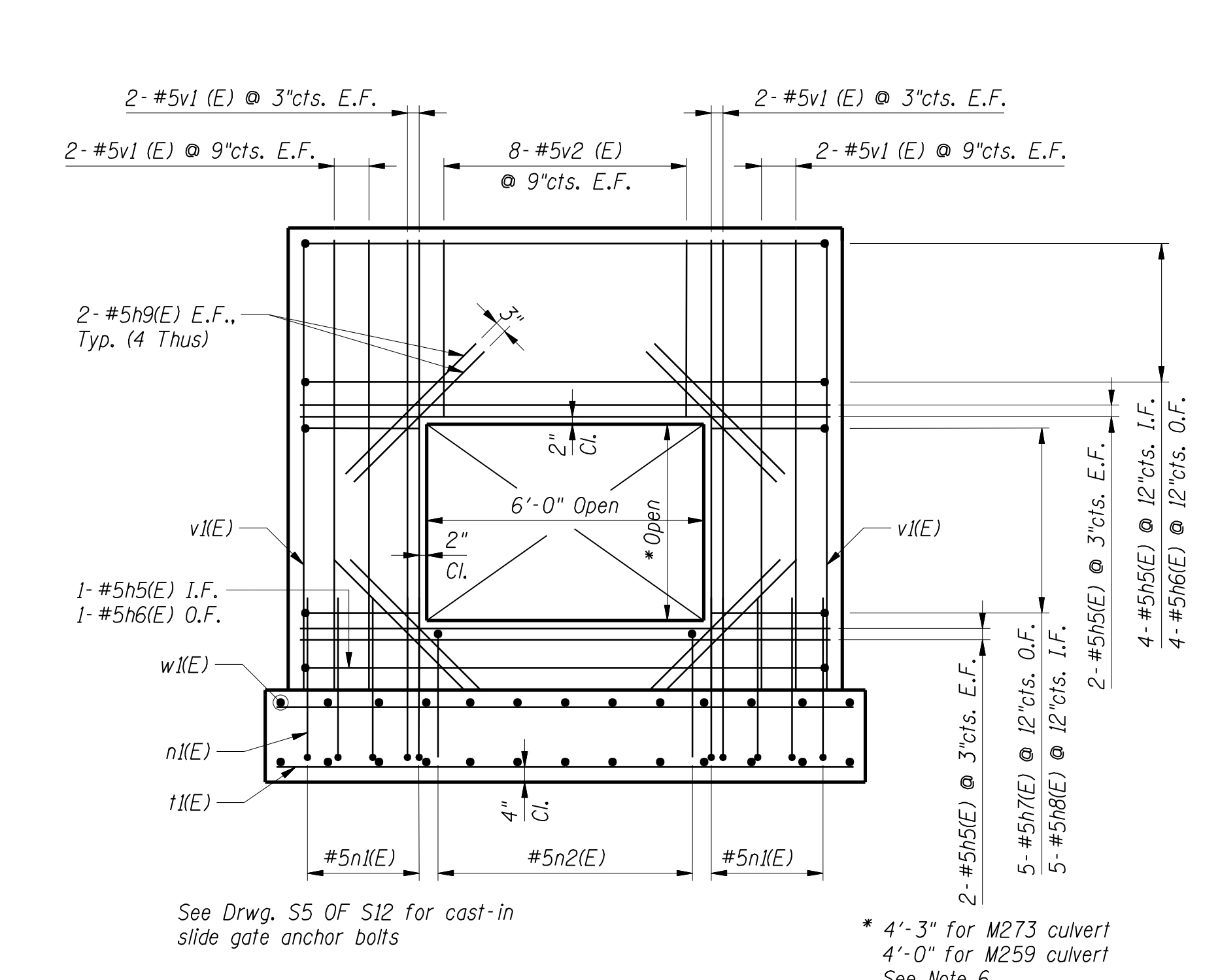


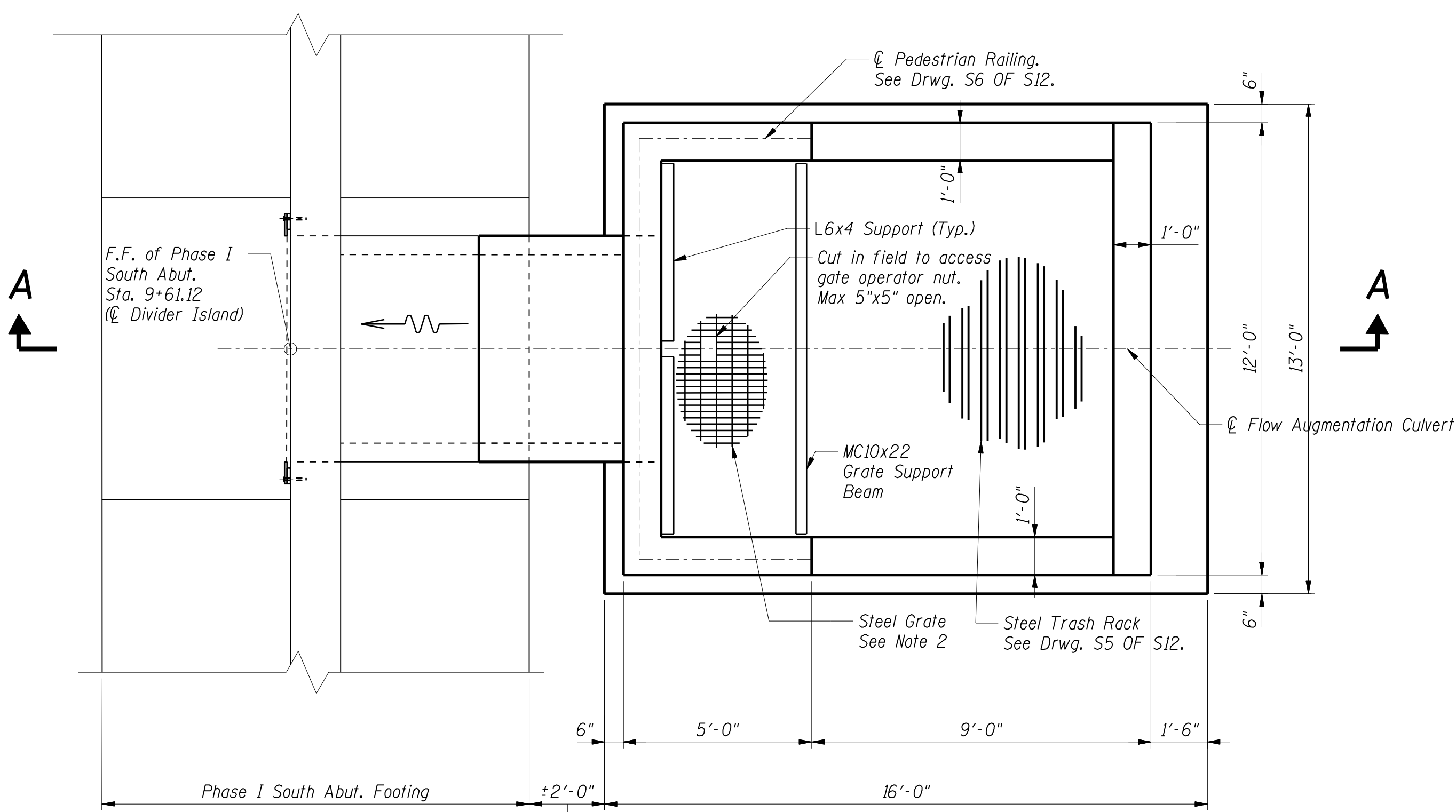
**SECTION A-A**



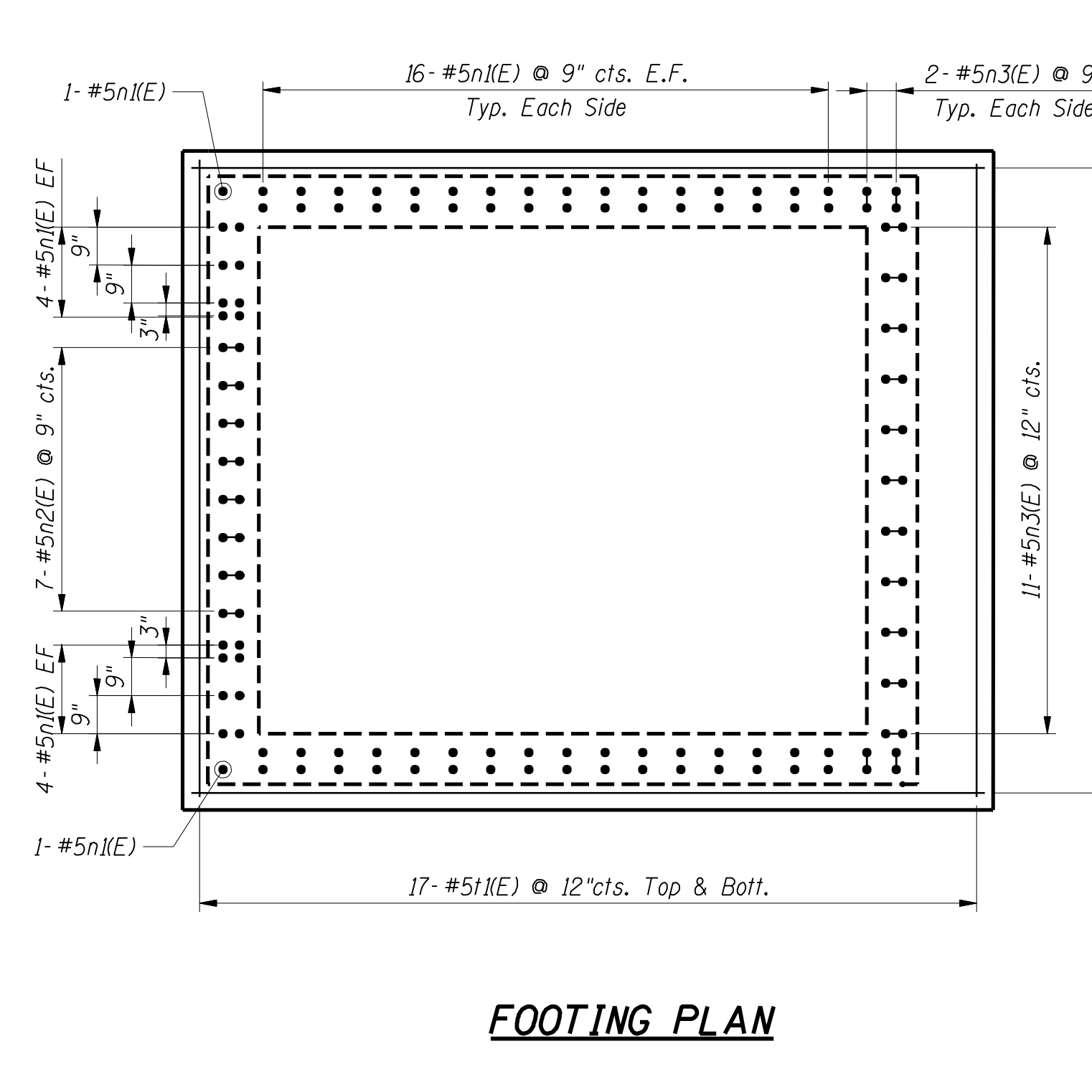
**WEST WALL ELEVATION**  
(East Wall Opp. Hand)



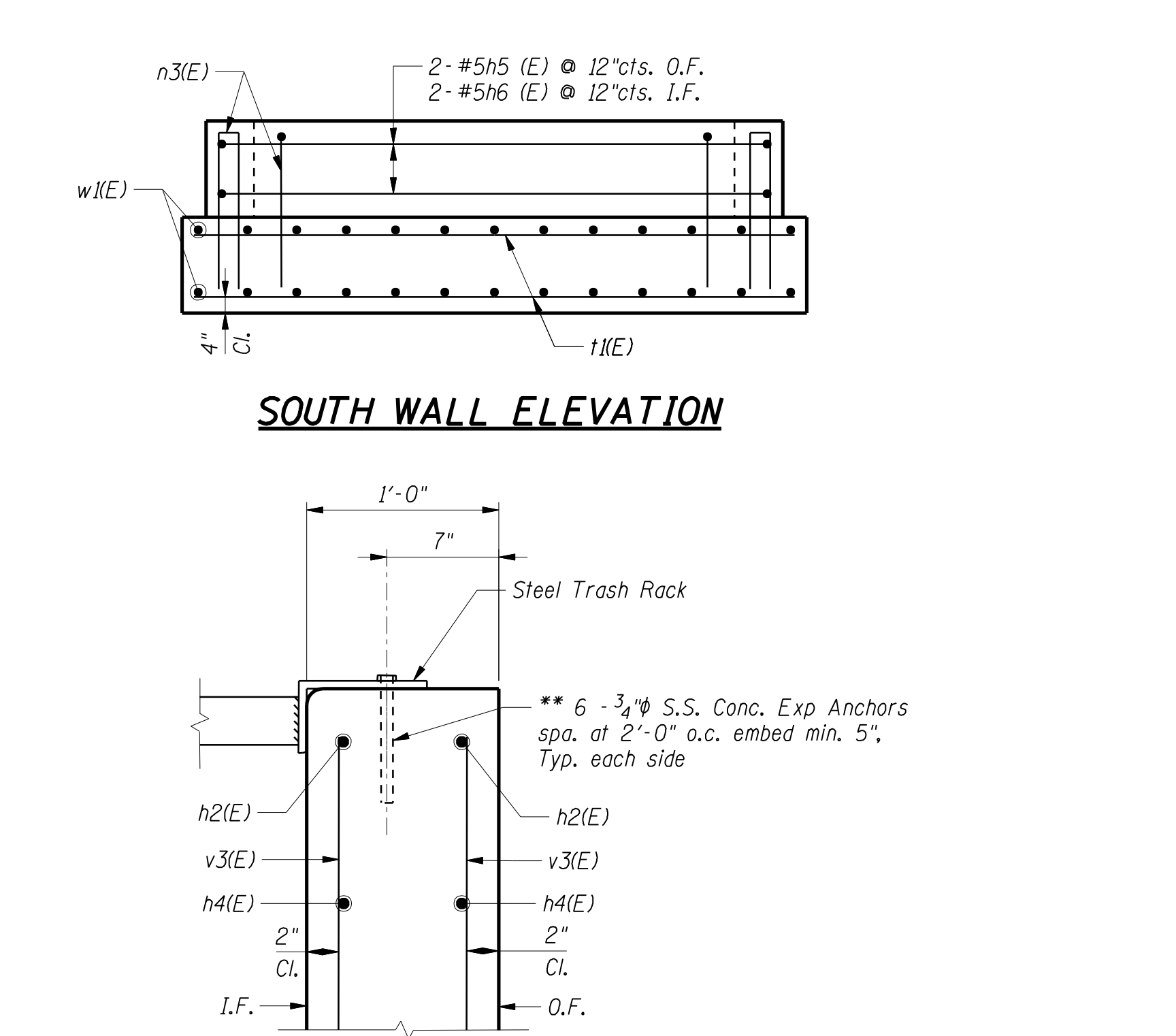
**NORTH WALL ELEVATION**



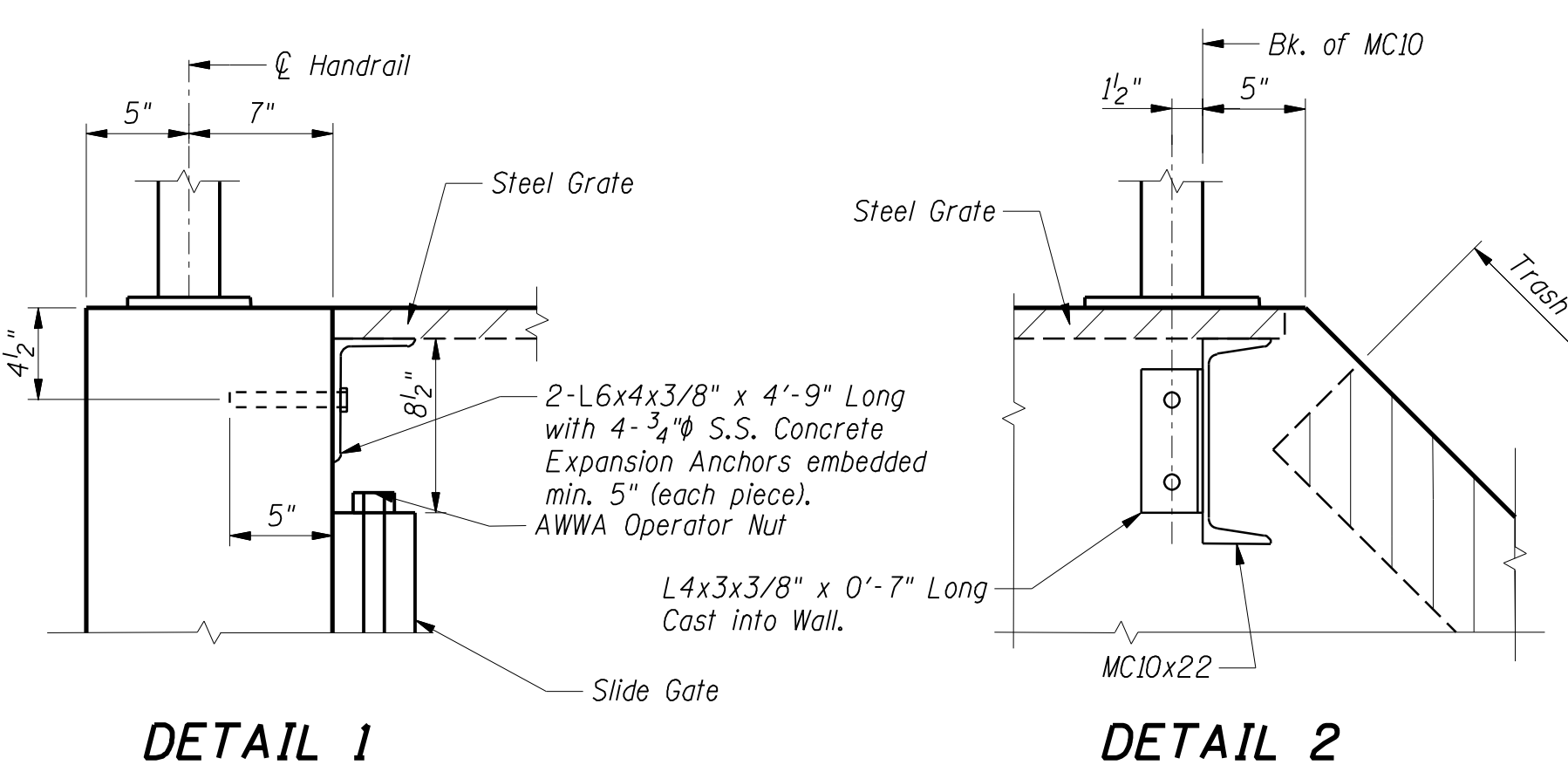
**PLAN**



**FOOTING PLAN**



**SOUTH WALL ELEVATION**



**DETAIL 1**

**DETAIL 2**

**BILL OF MATERIAL**

Item	Unit	Total
Galvanized Welded Steel Bar Grating	sq ft	38.8
Precast Concrete Box Culvert 5'x3'	ft	5.0

**SECTION B-B**

**Notes:**

1. Work this sheet with Drwg. S4 OF S12 & S5 OF S12
2. Provide Galvanized Welded Steel Bar Grating in accordance with the Special Provisions. Total panel size 9'-11"x3'-11". Bearing bars oriented N-S. Attach to supporting angles and channel in accordance with manufacturer recommended hold-down clips.
3. For details of grate support members, see Drwg. S4 OF S12. Reinforcement bars designated (E) shall be epoxy coated.
4. For Type D W.S., see Drwg. S1 OF S12.
5. I.F. denotes Inside Face; O.F. denotes Outside Face; F.F. denotes Front Face; E.F. denotes Each Face.
6. Size, type, and mating end condition of existing culvert section shall be verified in field prior to ordering material. New section shall be 5'-0" long, in conformance with AASHTO M273 or AASHTO M259, as required to match existing. Provide a flush culvert end at I.F. of headwall.