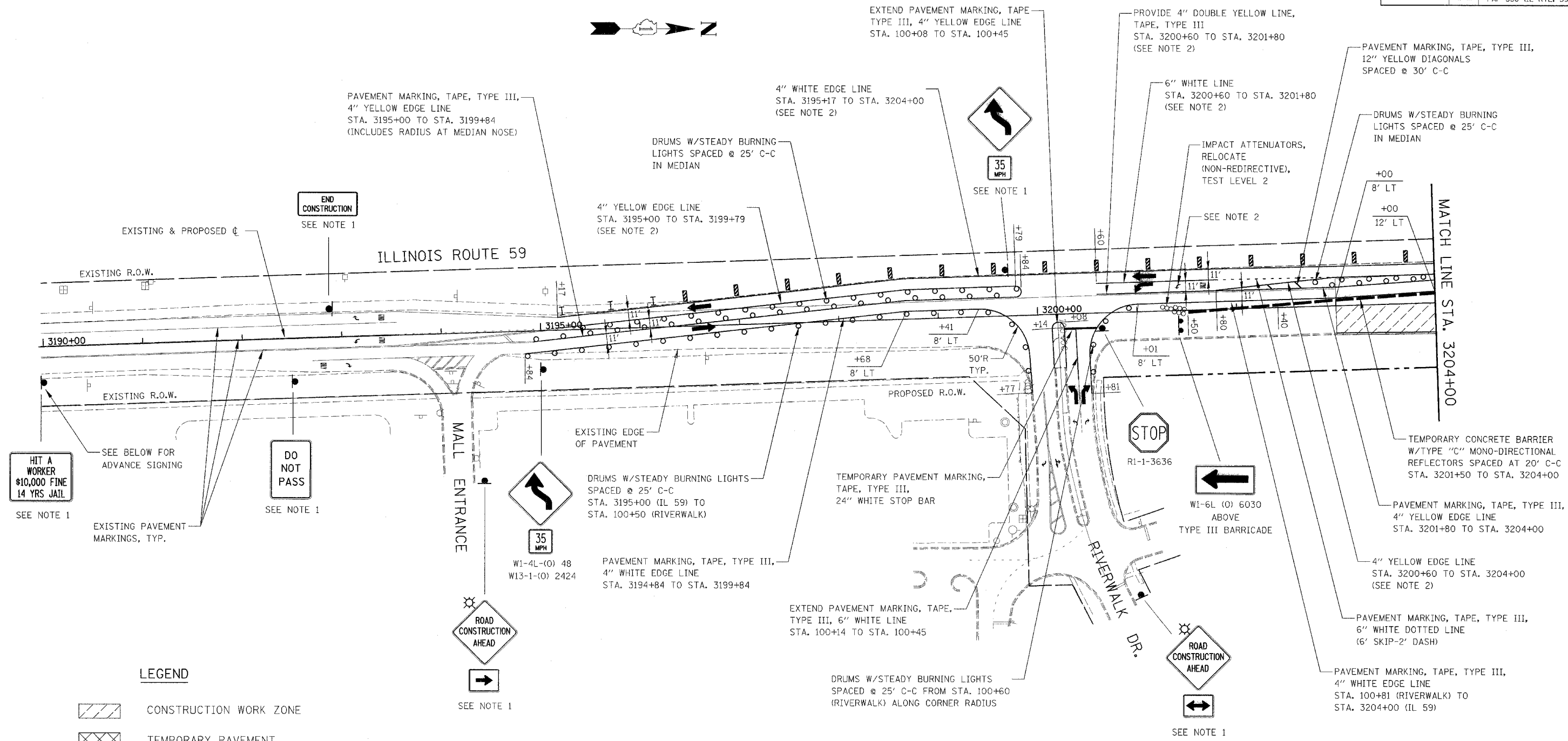
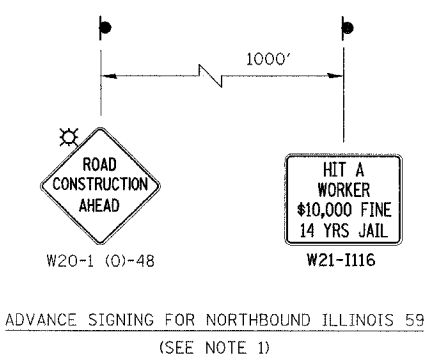


APP. DATE	SECTION	COUNTY	TOTAL SHEETS	SHEET NO.
338	114 BY-R-1	WILL	139	25
STA. 3190+00		TO STA. 3204+00		
FED. ROAD DIST. NO.		ILLINOIS		FAP 338 (IL RTE. 59)



LEGEND

- CONSTRUCTION WORK ZONE
- TEMPORARY PAVEMENT
- DIRECTION OF TRAFFIC
- TYPE II PLASTIC BARRICADES OR DRUMS
- TRAFFIC WARNING OR CHANNELIZATION DRUM
- SIGN LOCATION
- TYPE III BARRICADE LOCATION
- FLASHING YELLOW LIGHT



NOTES

1. SIGN PLACED IN PREVIOUS STAGE.
2. PAVEMENT MARKING PLACED IN PREVIOUS STAGE.

ILLINOIS DEPARTMENT OF TRANSPORTATION
 DISTRICT NO. 1 SCHAUMBURG
 STAGING PLANS
 ILLINOIS ROUTE 59
 STAGE 3

SCALE AS SHOWN
 DATE AUGUST 17, 2007

DRAWN BY REW
 CHECKED BY JCM

