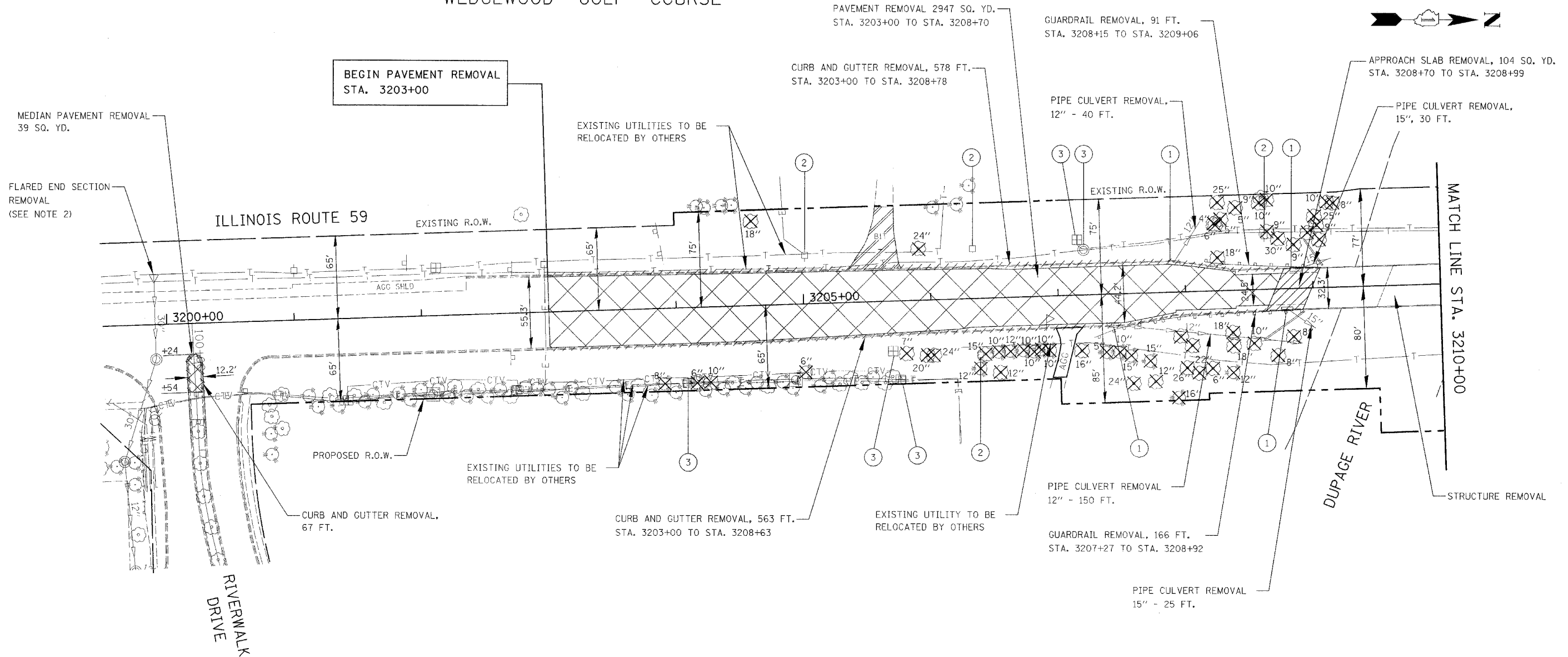


FAP NO.	SECTION	COUNTY	TOTAL SHEETS	SHEET NO.
338	114 BY-R-1	WILL	139	31
STA. 3190+00		TO STA. 3202+00		
FED. ROAD DIST. NO.	TITLE	FAP 338 (IL RTE. 59)		

WEDGEWOOD GOLF COURSE



LEGEND

- 8" TREE REMOVAL (DIA.)
- PAVEMENT REMOVAL
- APPROACH PAVEMENT REMOVAL
- EXISTING BITUMINOUS DRIVEWAY TO BE REMOVED (PAID FOR AS EARTH EXCAVATION)
- EXISTING AGGREGATE DRIVEWAY TO BE REMOVED (PAID FOR AS EARTH EXCAVATION)
- CURB AND GUTTER REMOVAL
- 1 INLET TO BE REMOVED
- 2 UTILITY POLE TO BE RELOCATED BY OTHERS
- 3 UTILITY RISER TO BE RELOCATED BY OTHERS

NOTE

1. SEE SCHEDULE OF QUANTITY SHEETS FOR TREE REMOVAL SCHEDULE.
2. FLARED END SECTION REMOVAL SHALL BE PAID FOR AS "PIPE CULVERT REMOVAL".

ILLINOIS DEPARTMENT OF TRANSPORTATION
DISTRICT NO. 1 SCHAUMBURG

REMOVAL PLANS



SCALE AS SHOWN
DATE AUGUST 17, 2007
DRAWN BY BSB/KGP
CHECKED BY JCM