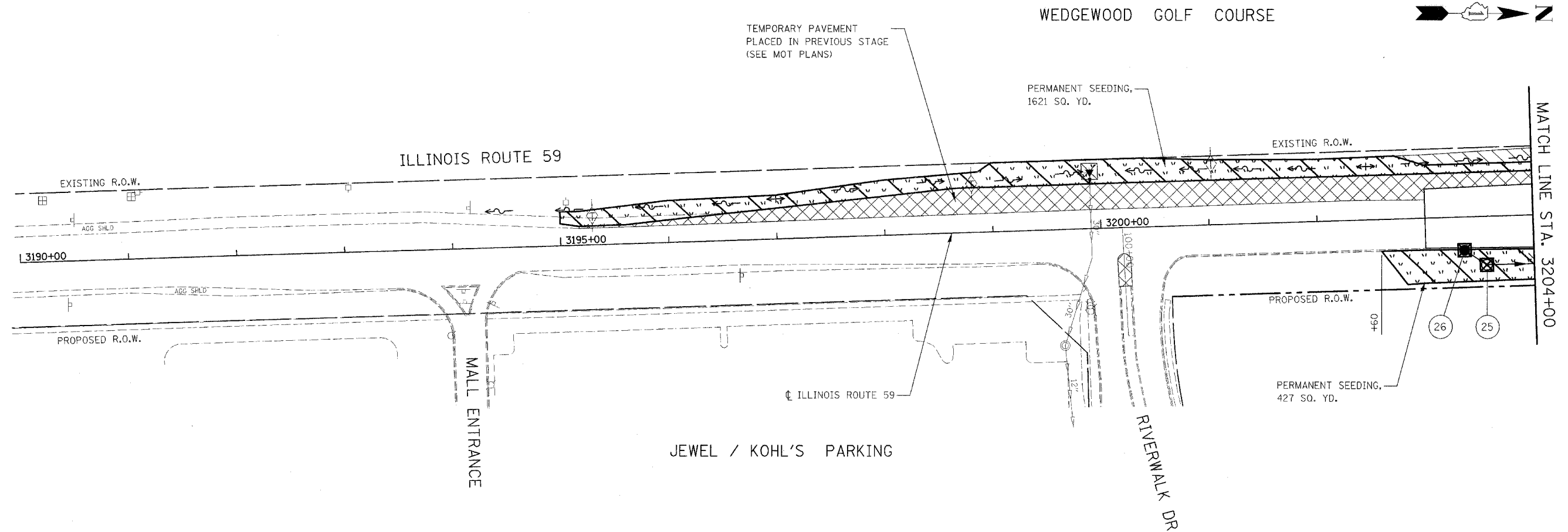


FAP RITE	SECTION	COUNTY	TOTAL SHEETS	SHEET NO
338	114 BY-R-1	WILL	139	51
STA. 3190+00		TO STA. 3204+00		
FED. ROAD DIST. NO.		ILLINOIS	FAP 338 (IL RTE. 59)	



EROSION CONTROL LEGEND

	TEMPORARY EROSION CONTROL SEEDING AND EROSION CONTROL BLANKET		INLET AND PIPE PROTECTION OR INLET FILTER INSTALLED IN PREVIOUS STAGE
	TEMPORARY EROSION CONTROL SEEDING AND EROSION CONTROL BLANKET INSTALLED IN PREVIOUS STAGE		TEMPORARY DITCH CHECK
	PERMANENT SEEDING (SEE NOTE 3)		TEMPORARY DITCH CHECK INSTALLED IN PREVIOUS STAGE
	PERMANENT SEEDING INSTALLED IN PREVIOUS STAGE		FLOW DIRECTION (SEE NOTE 4)
	RIPRAP		PERMANENT DRAINAGE STRUCTURE NUMBER (SEE NOTE 5)
	SEDIMENT CONTROL SILT FENCE (SEE NOTE 2)		PROPOSED STORM SEWER (SEE NOTE 5)
	SEDIMENT CONTROL SILT FENCE INSTALLED IN PREVIOUS STAGE		PROPOSED STORM SEWER INSTALLED IN PREVIOUS STAGE
	INLET AND PIPE PROTECTION OR INLET FILTER		TEMPORARY PIPE CULVERT
			TEMPORARY PIPE CULVERT INSTALLED IN PREVIOUS STAGE

GENERAL EROSION CONTROL NOTES:

TREE TRUNK PROTECTION, TREE ROOT PRUNING, AND TREE PRUNING WILL BE REQUIRED FOR THIS PROJECT. A REPRESENTATIVE FROM IDOT'S ROADSIDE DEVELOPMENT UNIT WILL DETERMINE LOCATIONS ON SITE AT THE START OF CONSTRUCTION. PAY ITEMS HAVE BEEN INCLUDED IN THE SUMMARY OF QUANTITIES.

THE CONTRACTOR WILL BE REQUIRED TO SUBMIT CERTIFICATION STATEMENT (NPDES ATTACHMENT 6). FULL COMPLIANCE WITH ALL TERMS OF THE NPDES PERMIT MUST BE STRICTLY ADHERED TO.

INLET FILTERS ARE TO BE PROVIDED AND MAINTAINED FOR ALL EXISTING AND PROPOSED DRAINAGE STRUCTURES WITHIN THE PROJECT LIMITS AND ALL STRUCTURES NOTED FOR INLET FILTER AS DIRECTED BY THE ENGINEER.

NOTES

1. THE CONSTRUCTION LIMITS WILL BE STAKED BY THE ENGINEER PRIOR TO COMMENCING CONSTRUCTION. THE CONSTRUCTION LIMITS MAY BE ADJUSTED BY THE ENGINEER TO PRESERVE TREES AND NO ADDITIONAL COMPENSATION WILL BE PAID TO THE CONTRACTOR FOR CHANGED CONSTRUCTION LIMITS.
2. SEDIMENT CONTROL SILT FENCE SHALL BE ERECTED ADJACENT TO R.O.W., EASEMENT, AND CONSTRUCTION LIMITS AND AS DIRECTED BY THE ENGINEER.
3. SEE LANDSCAPING PLANS FOR SEEDING INFORMATION.
4. SEE STAGES 3 & 4 CROSS SECTIONS FOR GRADING INFORMATION.
5. SEE PROPOSED DRAINAGE PLANS FOR STORM SEWER INFORMATION.



ILLINOIS DEPARTMENT OF TRANSPORTATION
 DISTRICT NO. 1 SCHAUMBURG
EROSION CONTROL PLAN
 STAGES 3 & 4
 ILLINOIS ROUTE 59

SCALE AS SHOWN
 DATE AUGUST 17, 2007

DRAWN BY RTA
 CHECKED BY JCM