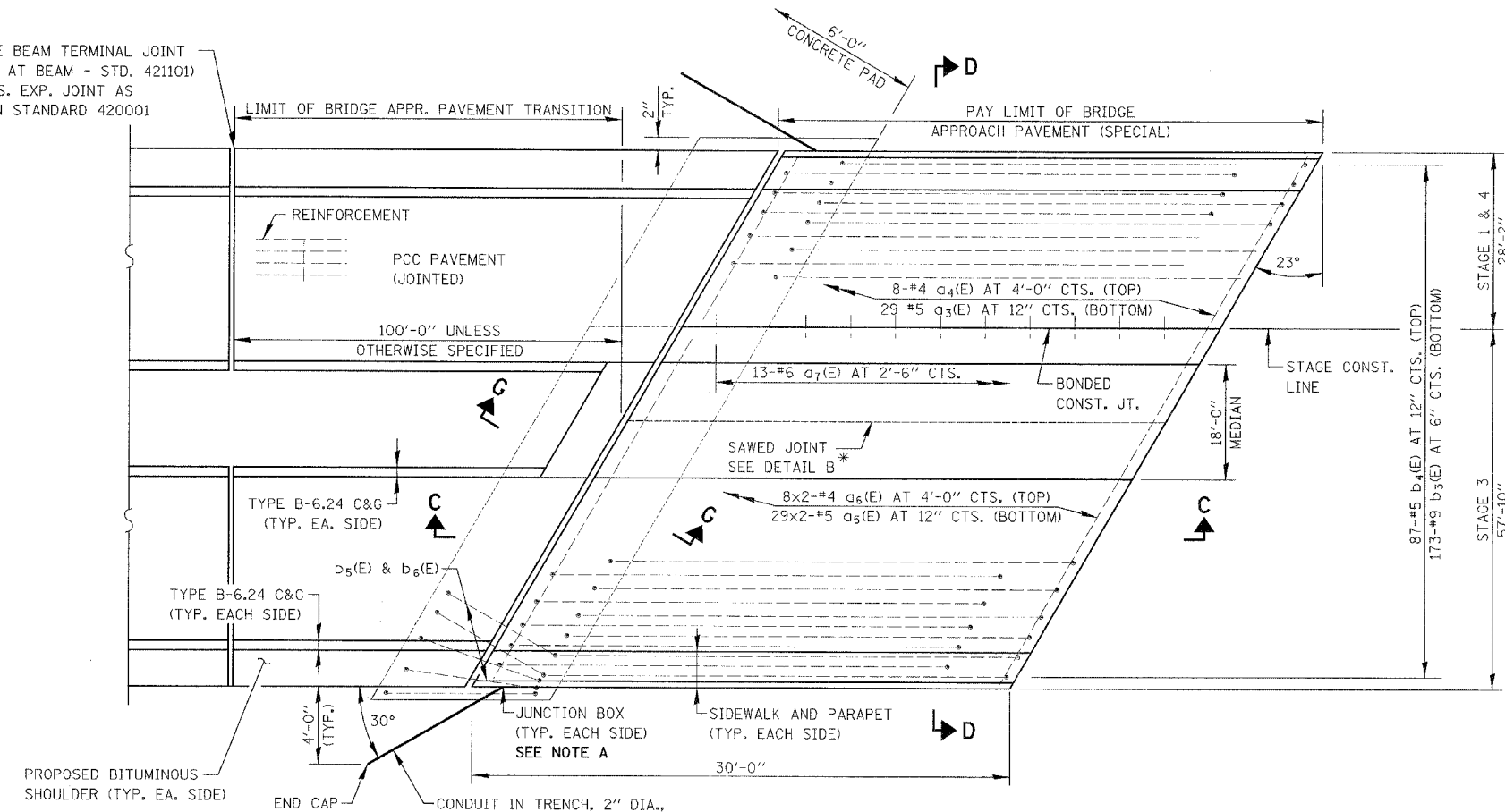


F&E	SECTION	COUNTY	TOTAL SHEETS	SHEET NO.
338	114 BY-R-1	WILL	139	57
STA.	TO STA.			
FED. ROAD DIST. NO.	ILLINOIS	FAP 338 (IL RTE. 59)		

WIDE FLANGE BEAM TERMINAL JOINT (SEE DETAIL AT BEAM - STD. 421101) OR 2" TRANS. EXP. JOINT AS DETAILED ON STANDARD 420001



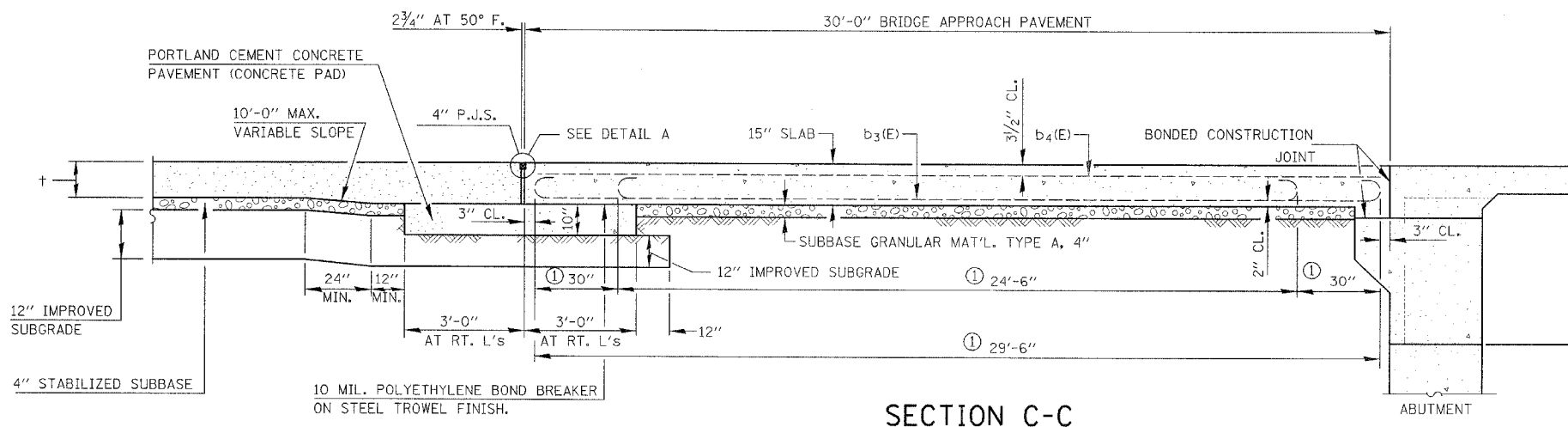
PLAN

NOTE A

FOR LOCATION OF JUNCTION BOX IN PARAPET WALL, SEE SHEET 59.

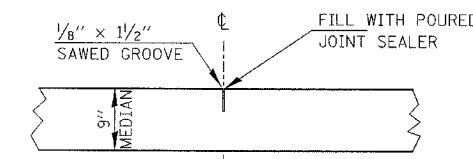
HORIZONTAL CONDUIT SHALL HAVE A MINIMUM DEPTH OF 2'-6". VERTICAL CONDUIT OUT OF THE JUNCTION BOX SHALL EXTEND TO THE DEPTH REQUIRED TO MEET THE HORIZONTAL CONDUIT. HORIZONTAL CONDUIT SHALL BE PITCHED TOWARD THE END CAP. THE ENTIRE LENGTH OF CONDUIT FROM JUNCTION BOX TO END CAP, INCLUDING THE END CAP, SHALL BE PAID FOR AS CONDUIT IN TRENCH, 2" DIA., GALVANIZED STEEL.

*SAW ϕ OR LANE EDGE IF POURED TWO OR MORE LANE WIDTHS AT A TIME.



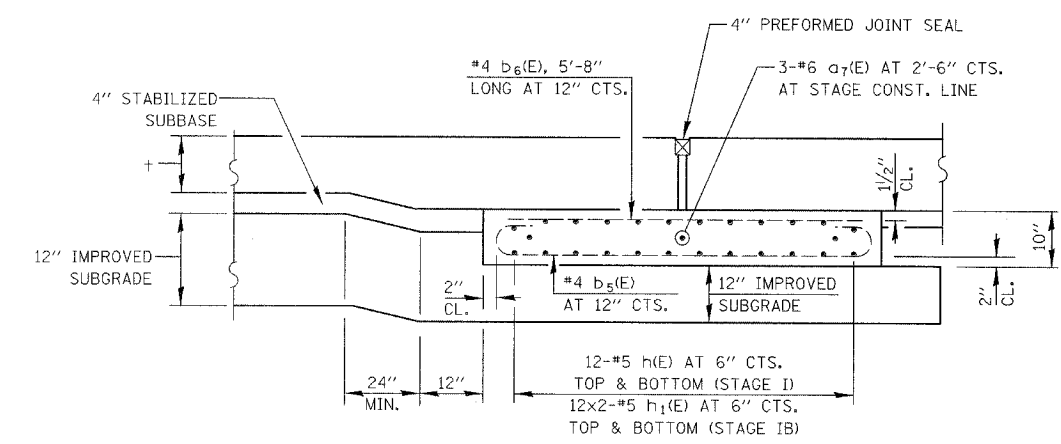
SECTION C-C

① STAGGER #9 a(E) BARS AS SHOWN ON PLAN - FULL WIDTH



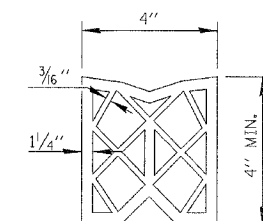
DETAIL B*

(REINFORCEMENT NOT SHOWN)

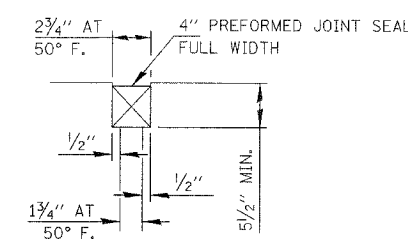


SECTION G-G

(SHOWING REINFORCEMENT)



PREFORMED JOINT SEAL



DETAIL A

BILL OF MATERIAL

ITEM	UNIT	TOTAL
BRIDGE APPROACH PAVEMENT (SPECIAL)	SQ. YD.	574
JUNCTION BOX, STAINLESS STEEL, EMBEDDED IN STRUCTURE, 12" X 12" X 8"	EACH	4
CONDUIT IN TRENCH, 2" DIA., GALVANIZED STEEL	FOOT	60

GENERAL NOTES:

1. BARS INDICATES THUS 12x3 ETC. INDICATES 12 LINES OF BARS WITH 3 LENGTHS PER LINE.
2. SEE SHEET 58 FOR SECTION D-D.
3. REINFORCEMENT BARS, BAR SPLICERS, TIE BARS, PREFORMED JOINT SEAL, SUB-BASE, IMPROVED SUBGRADE, BOND BREAKER, AND CONCRETE PAD (INCLUDING REINFORCEMENT) SHALL BE INCLUDED WITH "BRIDGE APPROACH PAVEMENT (SPECIAL)".
4. THICKNESS-"+"=THICKNESS OF PAVEMENT.
5. SEE STANDARD 421001 FOR REINFORCEMENT DETAILS NOT SHOWN.
6. SEE STANDARD 420001 FOR JOINT DETAILS NOT SHOWN.

ILLINOIS DEPARTMENT OF TRANSPORTATION
DISTRICT NO. 1 SCHAUMBURG

BRIDGE APPROACH PAVEMENT (SPECIAL)

SCALE NONE
DATE AUGUST 17, 2007
DRAWN BY TL
CHECKED BY SB