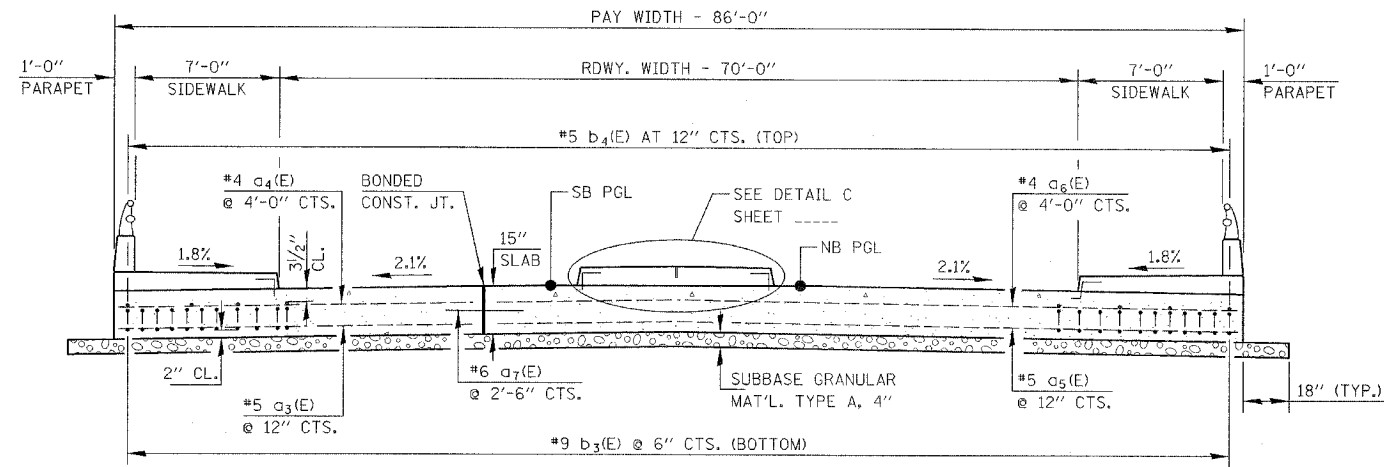
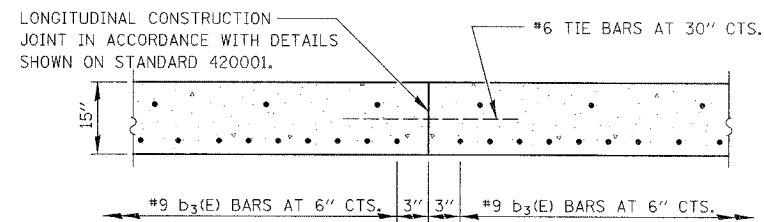


FAP RFE.	SECTION	COUNTY	TOTAL SHEETS	SHEET NO.
338	114 BY-R-1	WILL	139	58
STA.		TO STA.		
FED. ROAD DIST. NO.		R.1 NOTES		
FAP 338 (IL RTE. 59)				



SECTION D-D

(SEE PLAN FOR DIMENSIONS NOT SHOWN)
ALL REINFORCEMENT BARS SHALL BE EPOXY COATED.



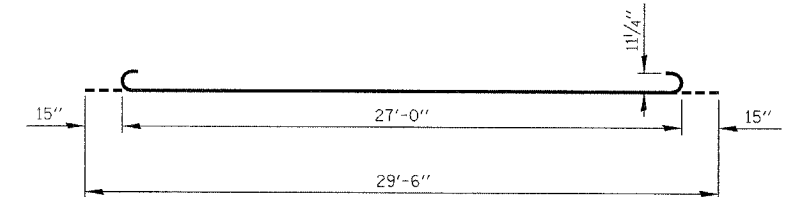
OPTIONAL LONGITUDINAL CONSTRUCTION JOINT

AS APPROVED BY THE ENGINEER, THE CONTRACTOR MAY ELECT TO REDUCE THE WIDTHS OF POUR BY USE OF THE OPTIONAL LONGITUDINAL CONSTRUCTION JOINT SHOWN. JOINTS SHALL BE LOCATED AT THE EDGE OF A TRAFFIC LANE.

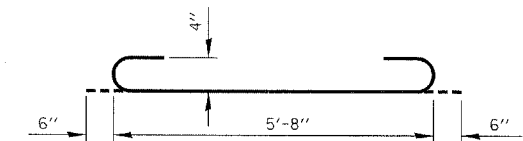
**APPROACH PAVEMENT
BILL OF MATERIALS**

BAR	NO.	SIZE	LENGTH	SHAPE
a3	29	#5	30'-3"	=====
a4	8	#4	30'-3"	=====
a5	58	#5	32'-1"	=====
a6	16	#4	31'-11"	=====
a7	16	#6	4'-0"	=====
b3	173	#9	29'-6"	=====
b4	87	#5	29'-8"	=====
b5	95	#4	6'-8"	=====
b6	95	#4	5'-8"	=====
h	24	#5	30'-5"	=====
h1	48	#5	32'-2"	=====
REINFORCEMENT BARS EPOXY COATED			POUND	26660
CONCRETE SUPERSTRUCTURE			CU. YD.	126
BRIDGE DECK GROOVING			SQ. YD.	160
PROTECTIVE COAT			SQ. YD.	174

QUANTITIES ARE FOR ONE APPROACH PAVEMENT, AND ARE SHOWN FOR INFORMATION ONLY. COST IS INCLUDED WITH BRIDGE APPROACH PAVEMENT (SPECIAL).



BAR b3(E)



BAR b5(E)

DESIGN STRESSES

$f_y = 60,000$ p.s.i.
 $f'_c = 3,500$ p.s.i.
 $n = 8.5$

ILLINOIS DEPARTMENT OF TRANSPORTATION
DISTRICT NO. 1 SCHAUMBURG

BRIDGE APPROACH PAVEMENT
(SPECIAL)

SCALE NONE
DATE AUGUST 17, 2007

DRAWN BY TL
CHECKED BY SB