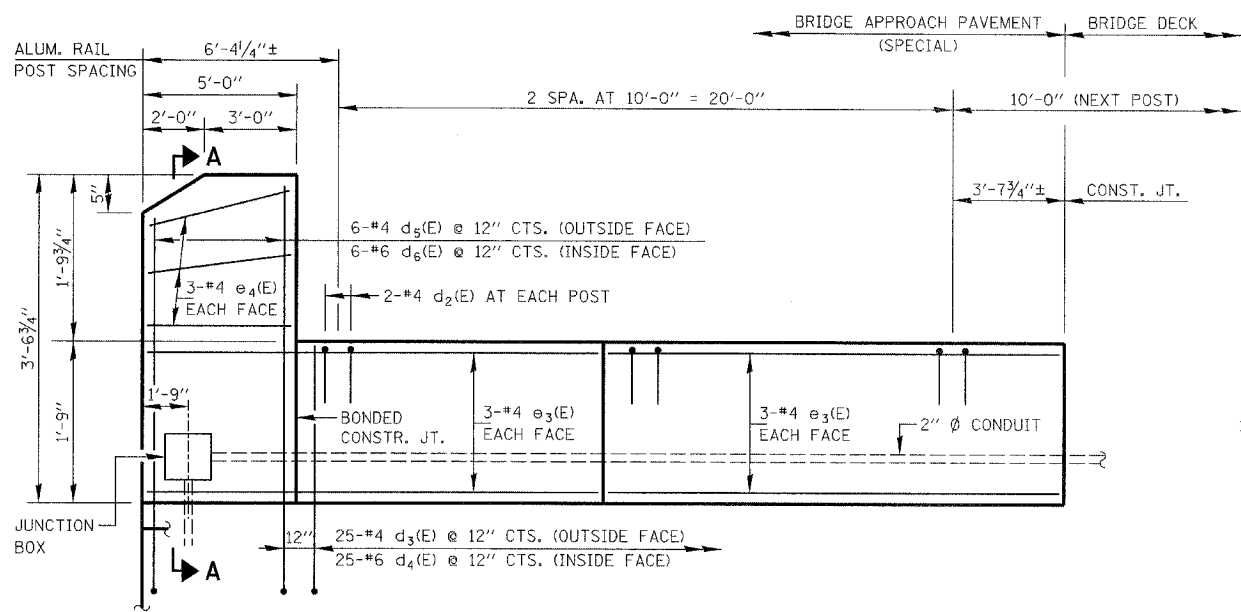
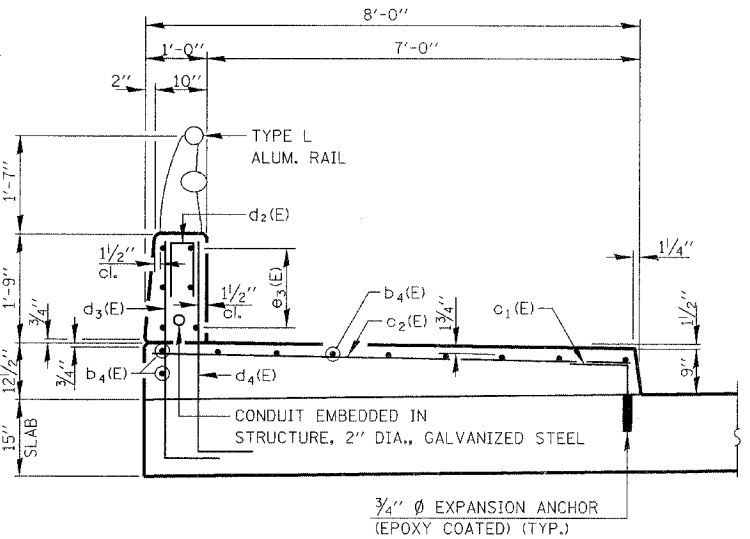


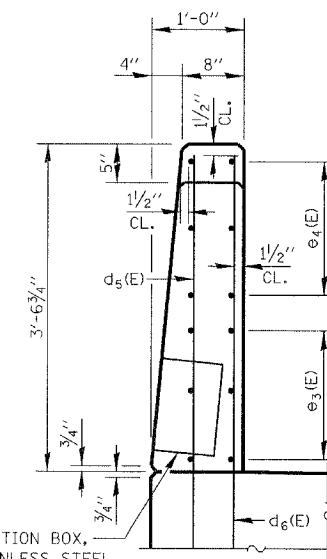
FAP RTE.	SECTION	COUNTY	TOTAL SHEETS	SHEET NO.
338	114 BY-R-1	WILL	139	59
STA.		TO STA.		
FED. ROAD DIST. NO.		ILLINOIS	FAP 338 (IL RTE. 59)	



ELEVATION - SIDEWALK & PARAPET



WEST SIDEWALK & PARAPET REINFORCEMENT

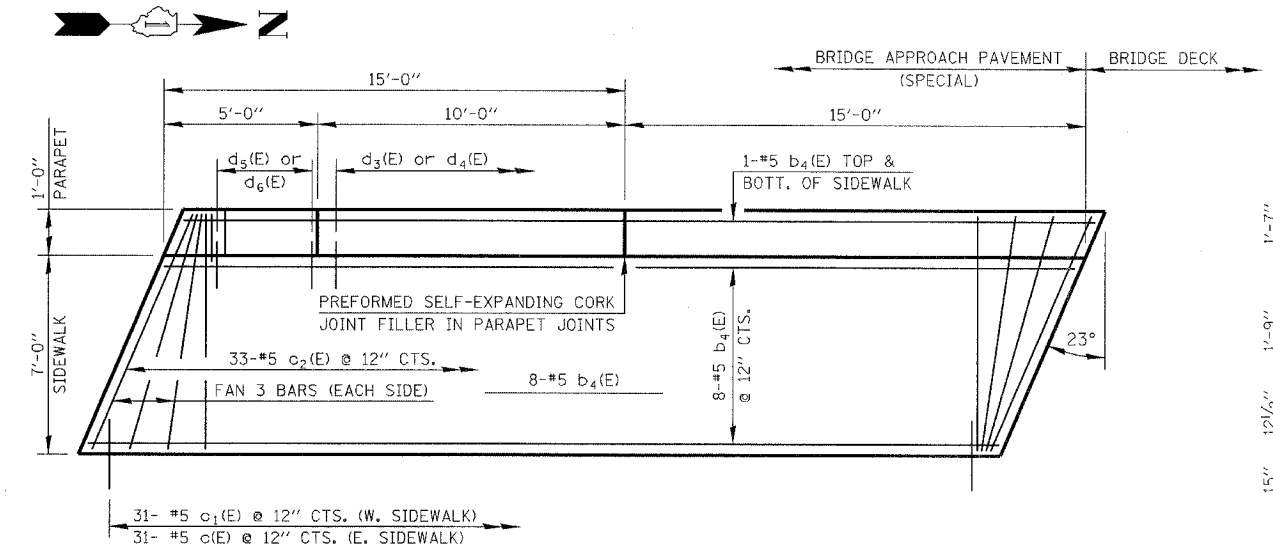


SECTION A-A

**APPROACH SIDEWALKS, PARAPETS, AND MEDIAN
BILL OF MATERIALS**

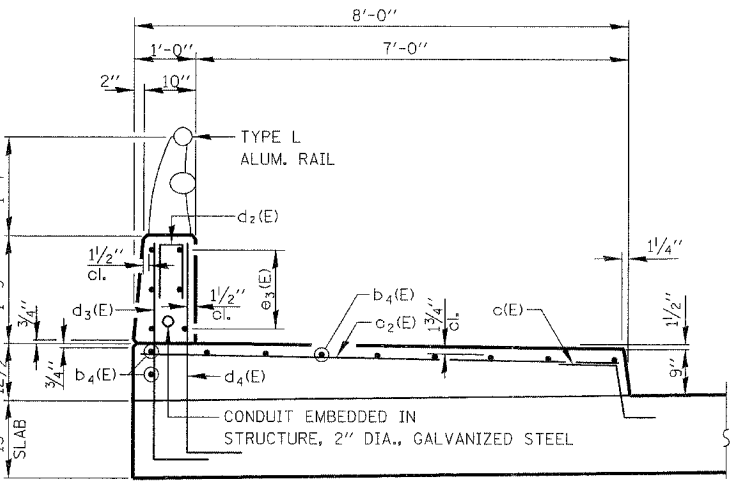
BAR	NO.	SIZE	LENGTH	SHAPE
b4(E)	35	#5	29'-8"	—
c(E)	31	#5	2'-5"	⌒
c1(E)	93	#5	1'-11"	⌒
c2(E)	66	#5	7'-8"	—
c3(E)	31	#5	13'-6"	—
d2(E)	12	#4	2'-0"	⌒
d3(E)	50	#4	4'-8"	L
d4(E)	50	#6	4'-8"	L
d5(E)	12	#4	6'-1"	L
d6(E)	12	#6	6'-1"	L
e3(E)	24	#4	14'-4"	—
e4(E)	12	#4	4'-4"	—
REINFORCEMENT BARS EPOXY COATED			POUND	3260
CONCRETE SUPERSTRUCTURE			CU. YD.	35
PROTECTIVE COAT			SO. YD.	250

QUANTITIES ARE FOR ONE APPROACH PAVEMENT, AND ARE SHOWN FOR INFORMATION ONLY. COST FOR APPROACH SIDEWALKS, PARAPETS, AND MEDIAN IS INCLUDED WITH BRIDGE APPROACH PAVEMENT (SPECIAL).

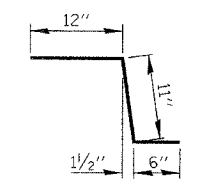


PLAN - SIDEWALK & PARAPET

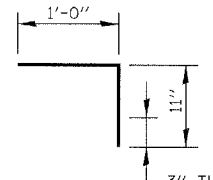
(SOUTH - WEST CORNER AS SHOWN, OTHER CORNERS SIMILAR)



EAST SIDEWALK & PARAPET REINFORCEMENT



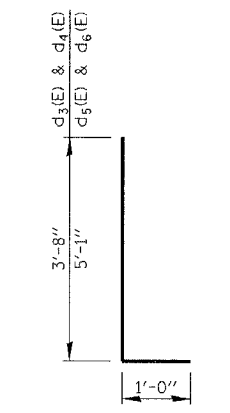
BAR c(E)



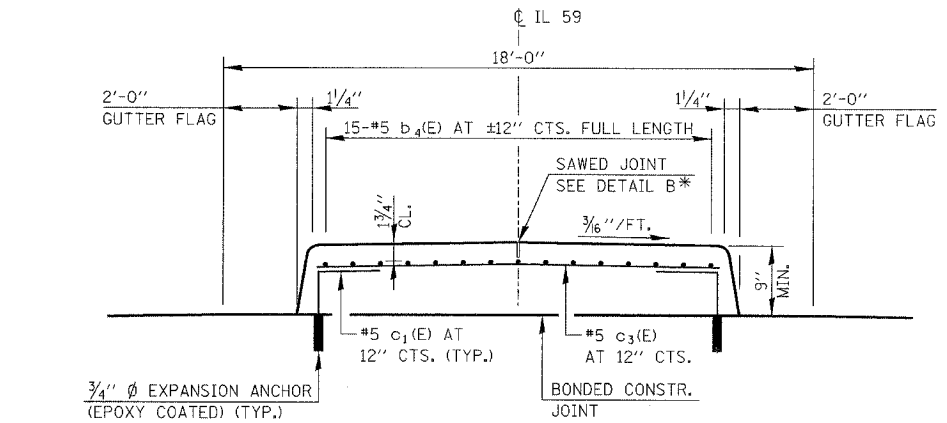
BAR c1(E)



BAR d2(E)

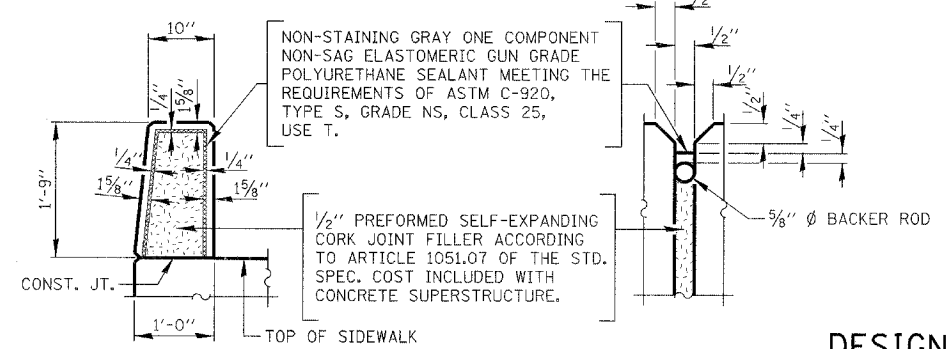


BARS d3(E), d4(E), d5(E) & d6(E)



DETAIL C

*SAW ϕ OR LANE EDGE IF Poured TWO OR MORE LANE WIDTHS AT A TIME.



PARAPET JOINT DETAILS

DESIGN STRESSES

$f_y = 60,000$ p.s.i.
 $f'_c = 3,500$ p.s.i.
 $n = 8.5$

NOTES:

- SEE SHEET S-18 FOR ALUMINUM RAIL QUANTITY AND DETAILS.
- CONDUIT EMBEDDED IN STRUCTURE, 2" DIA., GALVANIZED STEEL LOCATED BETWEEN JUNCTION BOXES IS INCLUDED WITH BRIDGE QUANTITIES.

ILLINOIS DEPARTMENT OF TRANSPORTATION
DISTRICT NO. 1 SCHAUMBURG

BRIDGE APPROACH PAVEMENT (SPECIAL)

SCALE NONE
DATE AUGUST 17, 2007
DRAWN BY TL
CHECKED BY SB