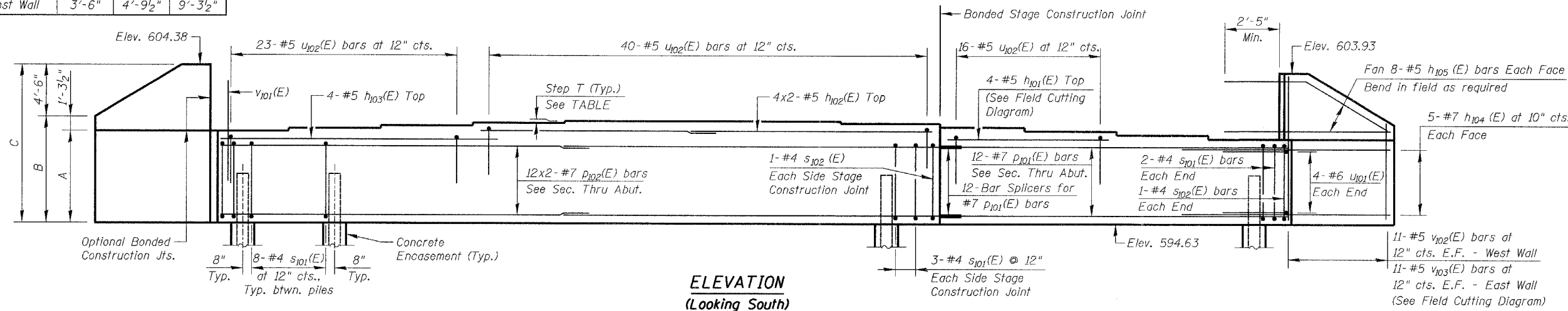
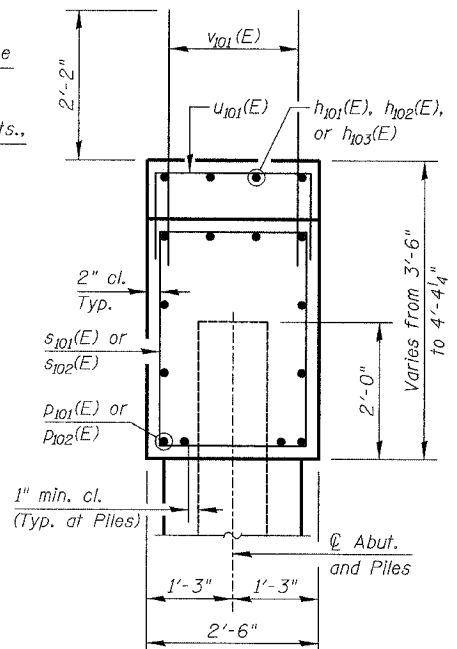


FAP NO.	SECTION	COUNTY	TOTAL SHEETS	SHEET NO.
338	114 BY-R-1	WILL	139	82
STA.	TO STA.			
FED. ROAD DIST. NO.	ILLINOIS	FED. AID PROJECT		

	Dim-A	Dim-B	Dim-C
East Wall	3'-11 1/2"	5'-3"	9'-9"
West Wall	3'-6"	4'-9 1/2"	9'-3 1/2"



ELEVATION
(Looking South)



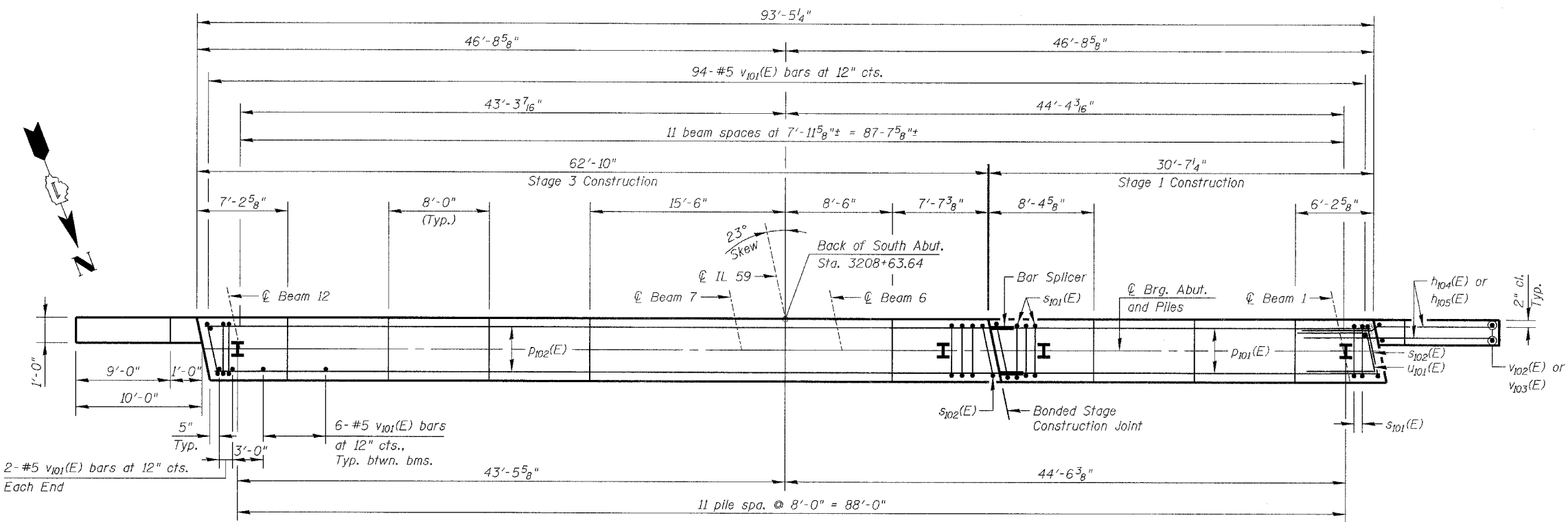
SEC. THRU ABUT.

BEARING SEAT ELEVATIONS

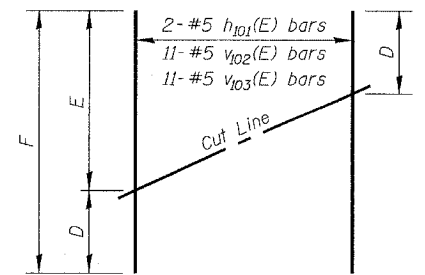
GIRDER	BRG. SEAT ELEVATION	STEP T- inch
B1	598.130	2 1/4"
B2	598.318	2 3/8"
B3	598.515	2 1/4"
B4	598.702	2 3/8"
B5	598.900	1"
B6	598.980	0"
B7	598.980	0"
B8	598.980	7/8"
B9	598.905	1 3/8"
B10	598.790	1 3/8"
B11	598.675	1 3/8"
B12	598.560	1 3/8"

Legend:
E.F. = Each Face

Min. Bar Lap:
Vertical Bars #5 - 1'-8"
Horizontal Bars #5 - 2'-5"
#7 - 3'-10"



PLAN - SOUTH ABUTMENT



FIELD CUTTING DIAGRAM

Order h101(E), v102(E) & v103(E) full length.
Cut as shown and use remainder of bars in opposite face.

D, E, & F DIMENSIONS

BAR	D	E	F
h101(E)	15'-2"	16'-0"	31'-2"
v102(E)	4'-4"	8'-10"	13'-2"
v103(E)	4'-10"	9'-4"	14'-2"

PILE DATA

Type & Size: Steel HP 12x74
Nominal Required Bearing: 589 kips
Allowable Resistance Available: 176 kips
Est. Length: 34'
No. Required: 11 - Excluding Test Pile
Test Pile: 1

Notes:

Pour steps monolithically with cap.
All exposed edges shall have standard 3/4" chamfers except as noted.
Bars indicated thus 20x3-#15 indicates 20 lines of bars with 3 lengths per line.
See DWG. S-25 for details and Bill of Material.
Reinforcement bars designated (E) shall be epoxy coated.

REVISIONS	
NAME	DATE

DWG. S-23 of 34
ILLINOIS DEPARTMENT OF TRANSPORTATION
SOUTH ABUTMENT - INTEGRAL
ILLINOIS ROUTE 59 OVER DuPAGE RIVER
FAP ROUTE 338 SECTION 114 BY-R-1
WILL COUNTY
STATION 3209+85.00
STRUCTURE NUMBER 099-0339
SCALE: NONE
DATE: 08/17/07
DESIGNED BY: TB
CHECKED BY: WPM
DRAWN BY: TL
CHECKED BY: TB

FILE: L:\16632.01\Cad\Sheets\Roadway_Structures\Bridges\663201-50339-4850.dwg