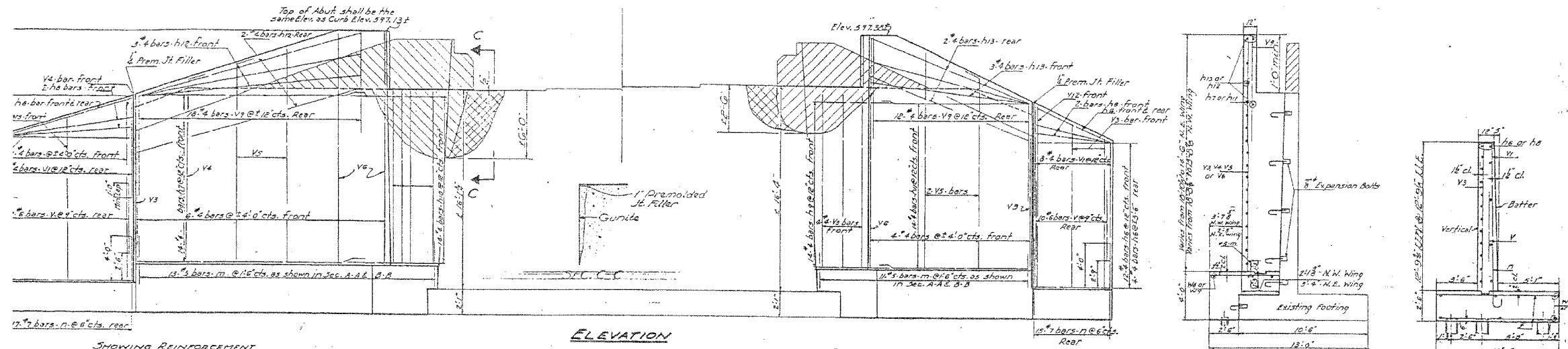


FAP RTE.	SECTION	COUNTY	TOTAL SHEETS	SHEET NO.
338	114 BY-R-1	WILL	139	98
STA.	TO STA.			
FPA ROAD DIST. NO.	ALLEN	FAP 338 (IL RTE. 59)		

STATE OF ILLINOIS
DEPARTMENT OF PUBLIC WORKS & BUILDINGS
DIVISION OF HIGHWAYS

ROUTE NO.	SECTION	COUNTY	TOTAL SHEETS	SHEET NO.
S.B.I. 59	114 BY	WILL	14	8
7 SHEETS				

ed areas show the portions of the existing structure which shall be removed by the Bridge Contractor. Steel shall be cut off. This work shall be paid for per Cu. Yd. as Cont. Removal, Est. 3.0 Cu. Yd.
to be placed as directed by the Engineer. Hatched areas indicate portions of existing structure to be removed & concrete and then grouted as directed by the engineer.



SHOWING REINFORCEMENT

ELEVATION

SHOWING REINFORCEMENT

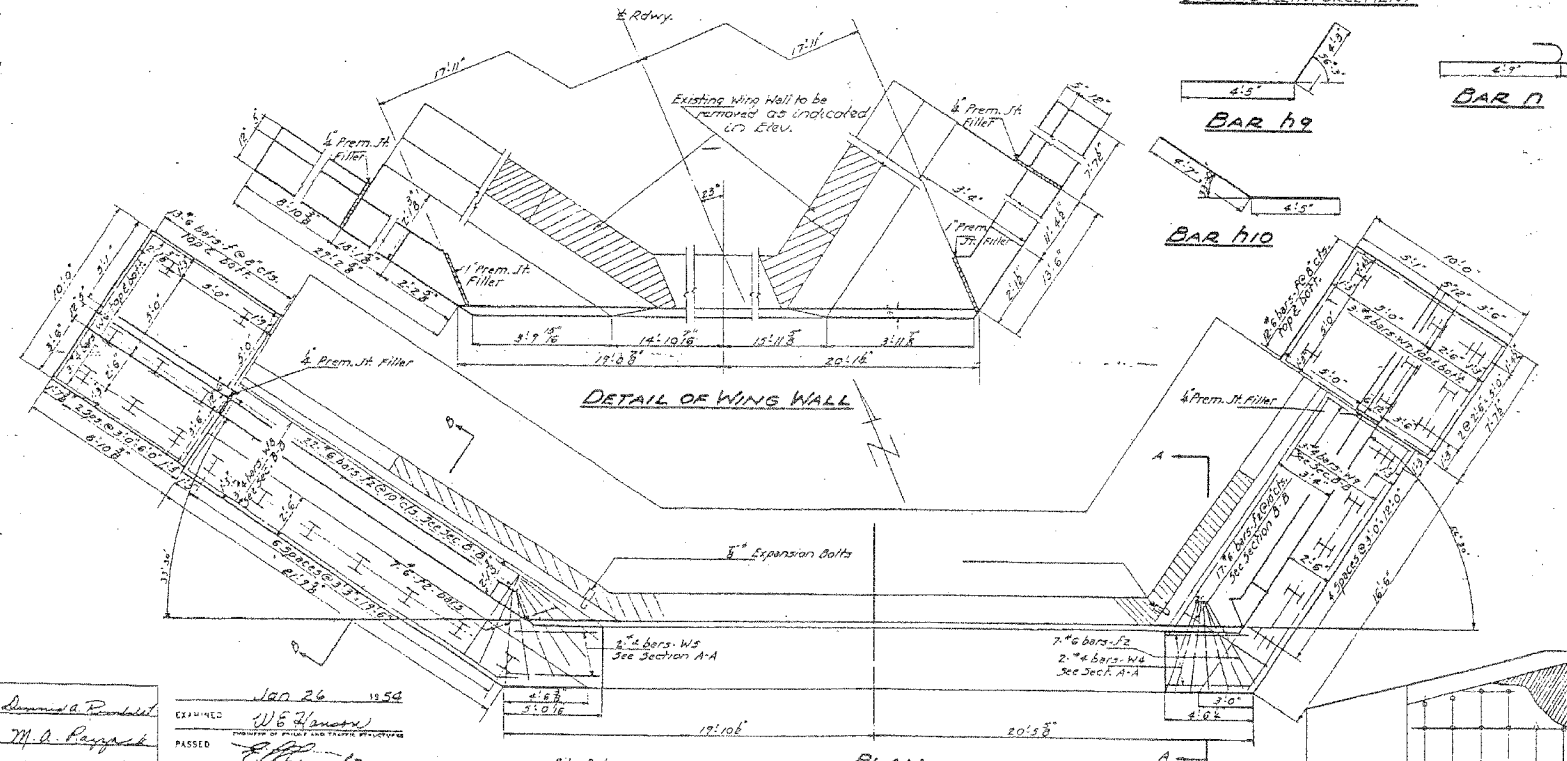
SECTION B-B

END OF WING

BILL OF MATERIAL

Bar	No.	Size	Length	Shape
F	30	#6	9'-6"	
F8	32	#6	5'-3"	
h5	20	#4	7'-3"	
h7	14	#4	7'-0"	
h8	20	#4	8'-6"	
h9	14	#4	8'-8"	
h10	14	#4	9'-0"	
h11	14	#4	10'-6"	
h12	5	#4	18'-0"	
h13	5	#4	13'-0"	
V	26	#6	5'-9"	
V1	19	#4	8'-6"	
V3	14	#4	13'-9"	
V4	3	#4	15'-0"	
V5	4	#4	16'-9"	
V6	3	#4	18'-3"	
V7	30	#4	16'-0"	
W4	2	#4	4'-3"	
W5	2	#4	4'-9"	
W6	6	#4	5'-6"	
W7	6	#4	7'-9"	
W8	3	#4	2'-6"	
W9	3	#4	16'-0"	
M	24	#5	2'-6"	
N	34	#7	3'-7"	

Class I Concrete Cu Yds 109.0
Reinforcement Bars Lbs 3125
Concrete Removal Cu Yds 5.0
Expansion Bolts Each 25
Steel Piles (B.P.30) Lin. Ft. 270
Test Pile Steel B'5P36 Lbs 1



DETAIL OF WING WALL

PLAN

SECTION A-A

Location of Expansion Bolts in both walls spacing 3'-0" horiz. 4'-0" vert. Expansion bolts shall consist of self drilling expansion shells and 3/8" hooked bolts. Hooked bolts shall extend a min. of 6" into new concrete.

EXPANSION BOLT LAYOUT

NORTH ABUTMENT
S.B.I. ROUTE 59 SEC. 114 BY
WILL COUNTY
STATION 2836 + 55

DESIGNED: *Donald R. Rindell*
CHECKED: *M. A. Pappas*
IN CHARGE: *M. A. Pappas*
DATE: *Jan 26 1954*
APPROVED: *W. E. Homan*
SUPERVISOR OF BRIDGE AND TRUSS STRUCTURES

Pile Data
Type: Steel H-Piles G.B.P.36
Estimated Length - 10 ft
No. Reg. 20

Check Change vertical dimensions (Abut. & Piers) & provided for auditing.

FOR INFORMATION ONLY

ILLINOIS DEPARTMENT OF TRANSPORTATION
DISTRICT NO. 1 SCHAUMBURG
1964 EXISTING STRUCTURE PLANS
FAP ROUTE 338 SECTION 114 BY-R-1
WILL COUNTY
SN 099-0143 (E)
SCALE _____ DRAWN BY _____
DATE AUGUST 17, 2007 CHECKED BY _____